

History

- 23-year-old male with right medial knee pain for the past 3-4 weeks. The patient volunteers as a wrestling coach and two kids ran into his knee from the medial side 3 to 4 weeks ago. Now his knee is giving way and he has pain.

Coronal PD



Coronal PD



Coronal PD



Coronal PD



Coronal PD



Coronal PD



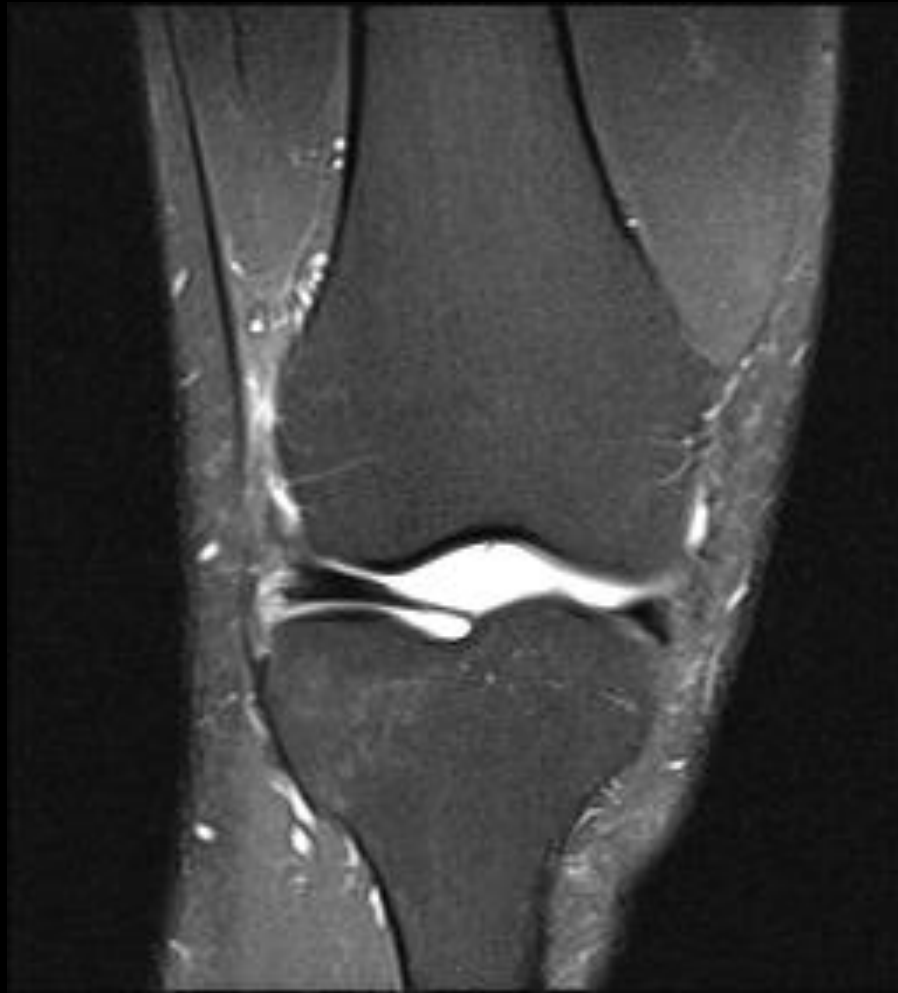
Coronal PD



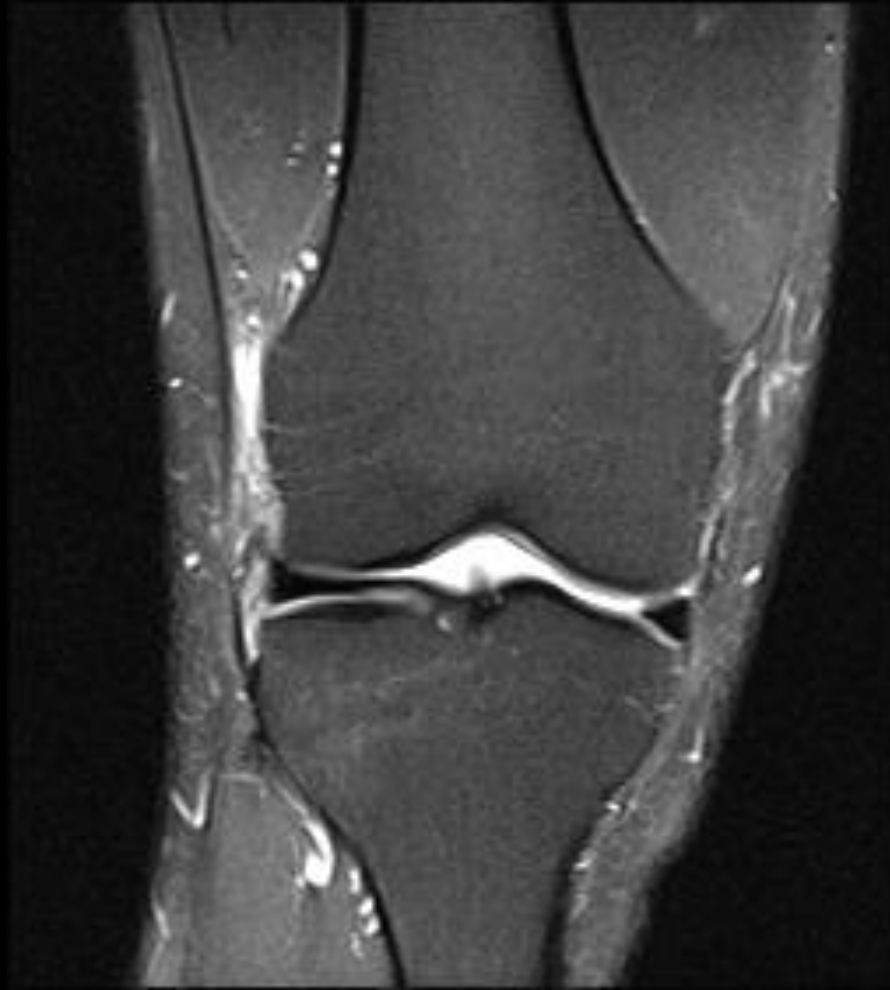
Coronal PD



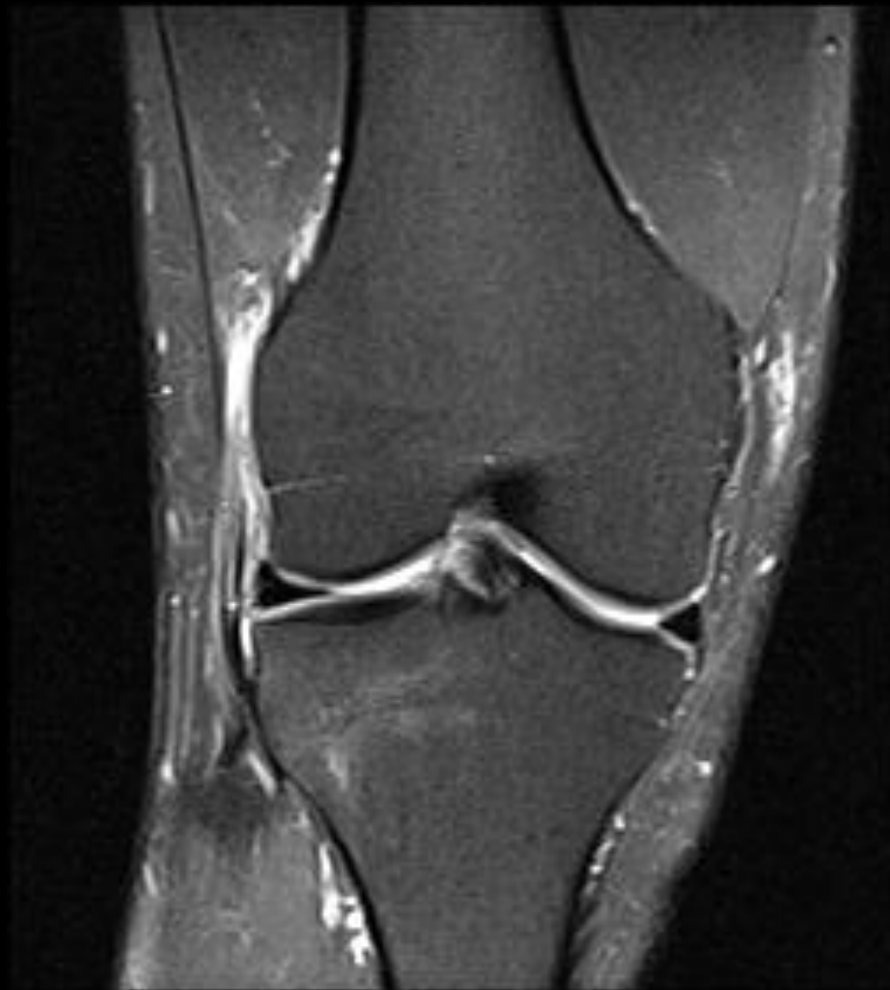
Coronal PD FS



Coronal PD FS



Coronal PD FS



Coronal PD FS



Coronal PD FS



Coronal PD FS



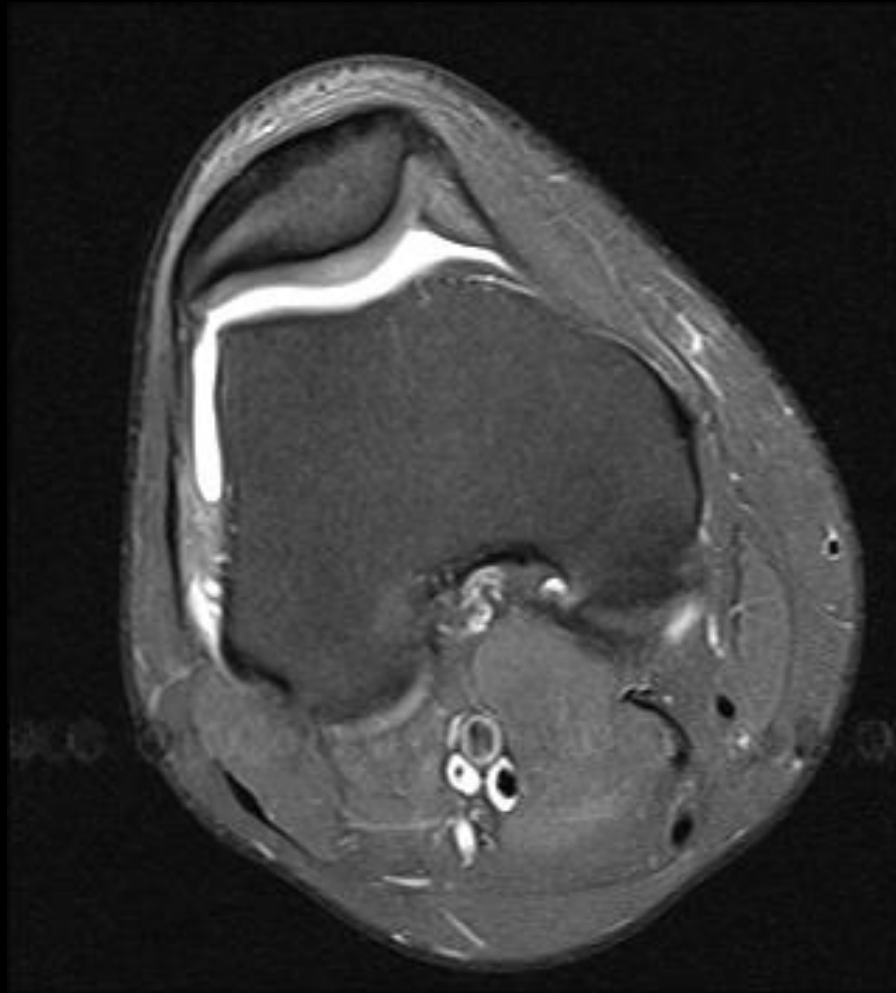
Coronal PD FS



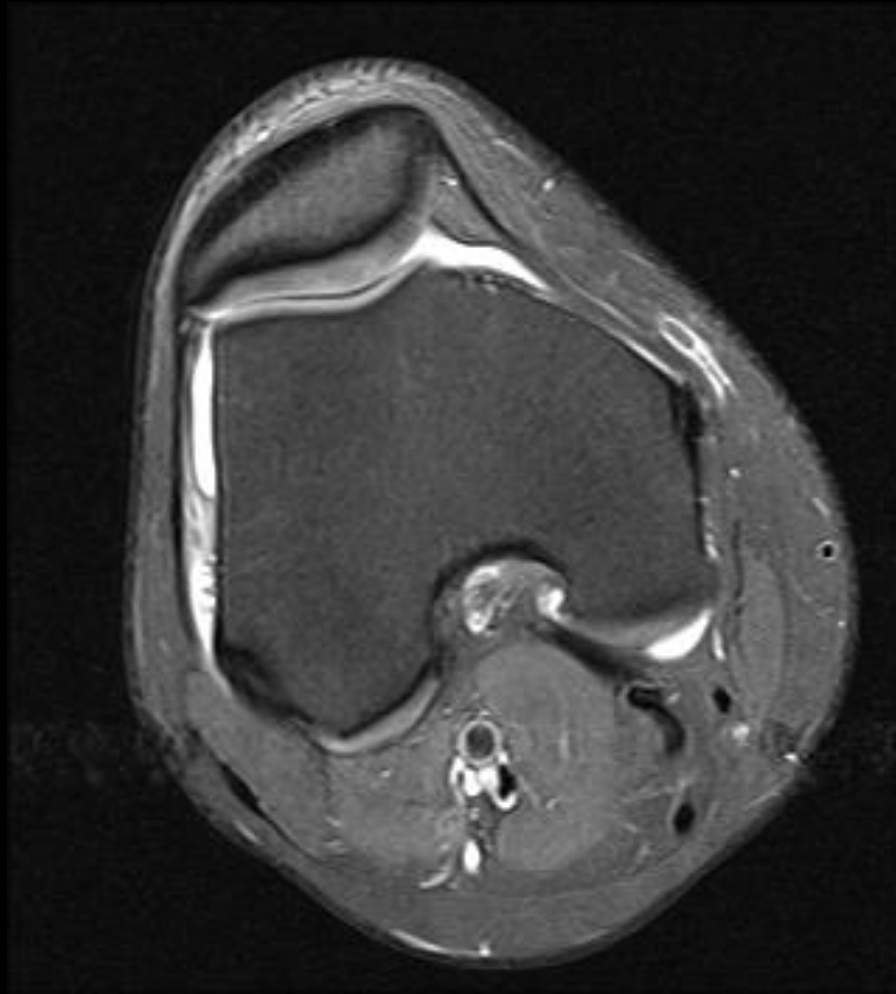
Coronal PD FS



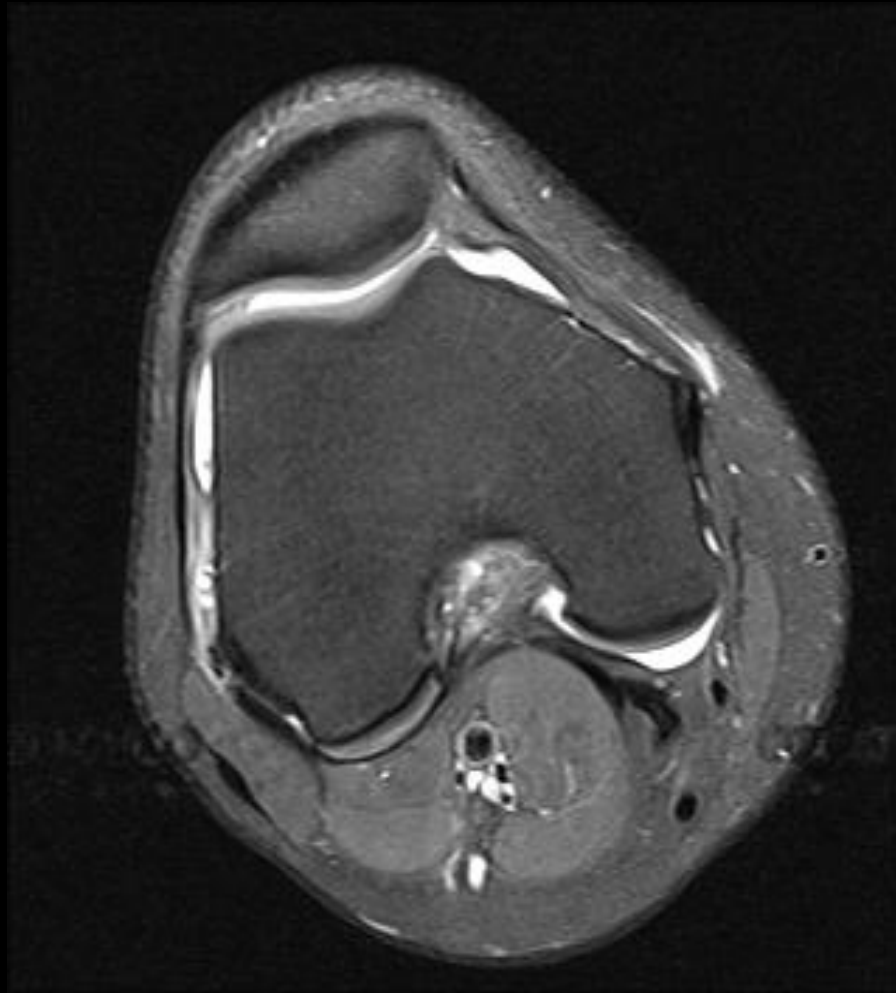
Axial PD



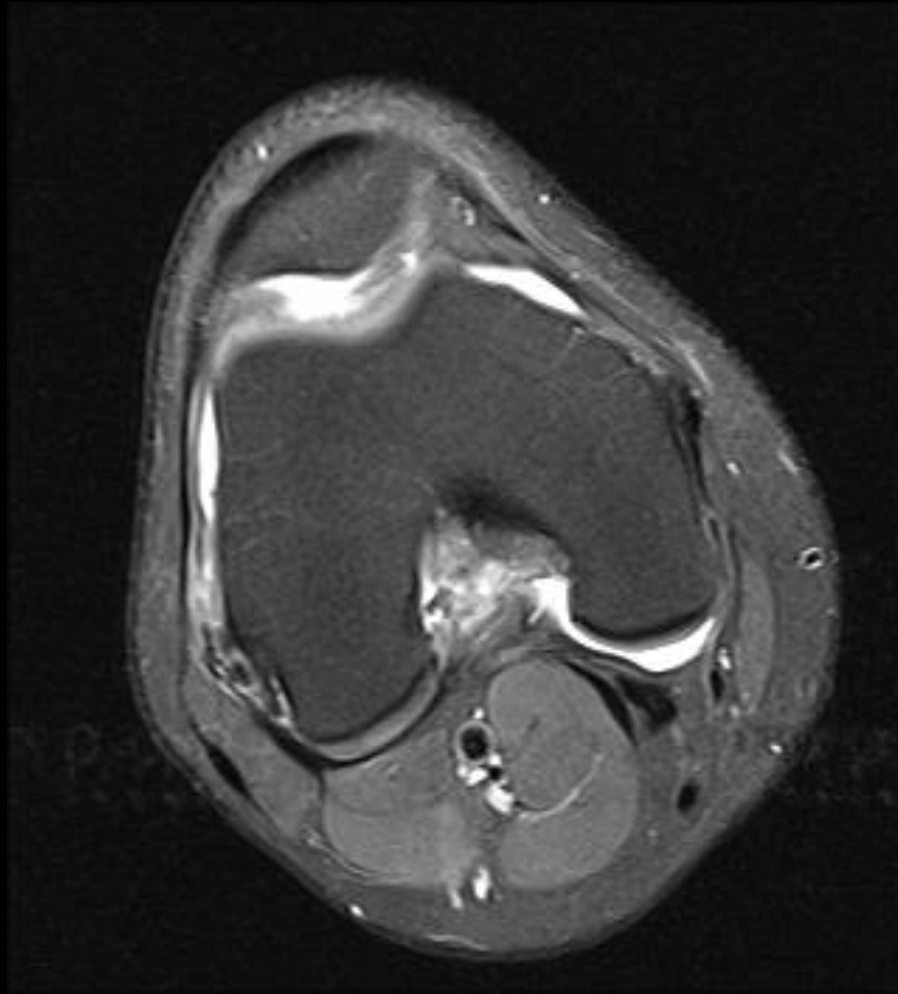
Axial PD



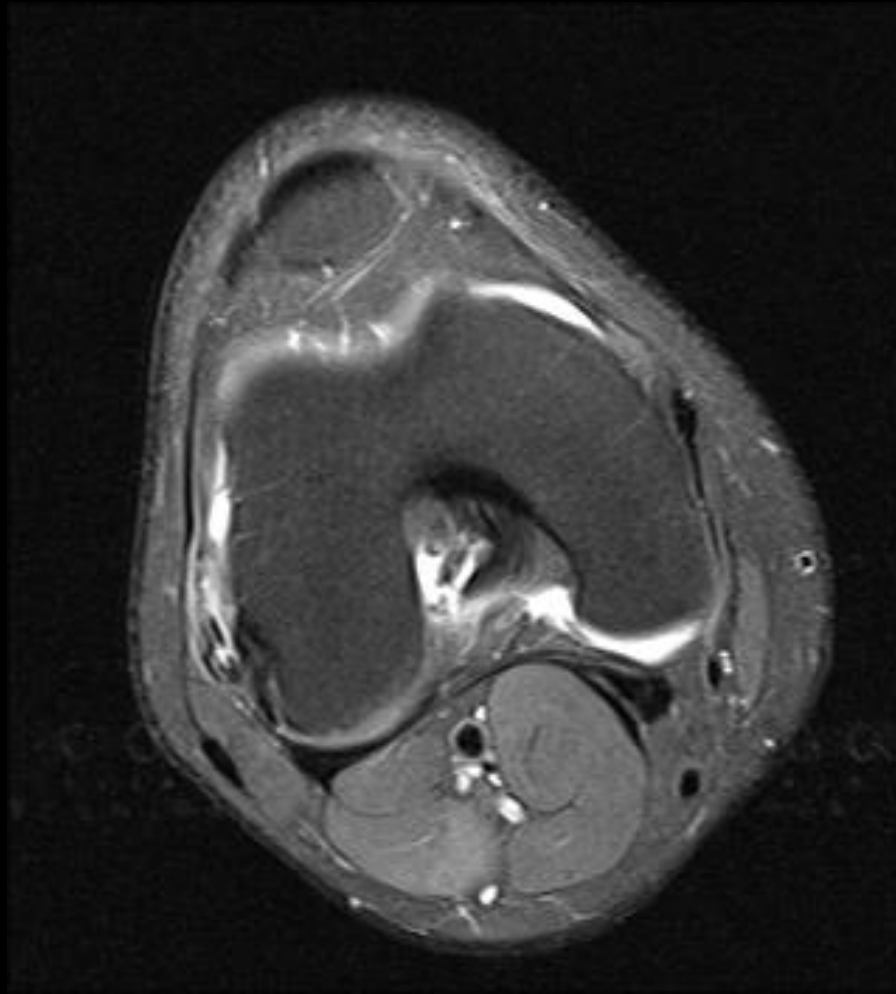
Axial PD



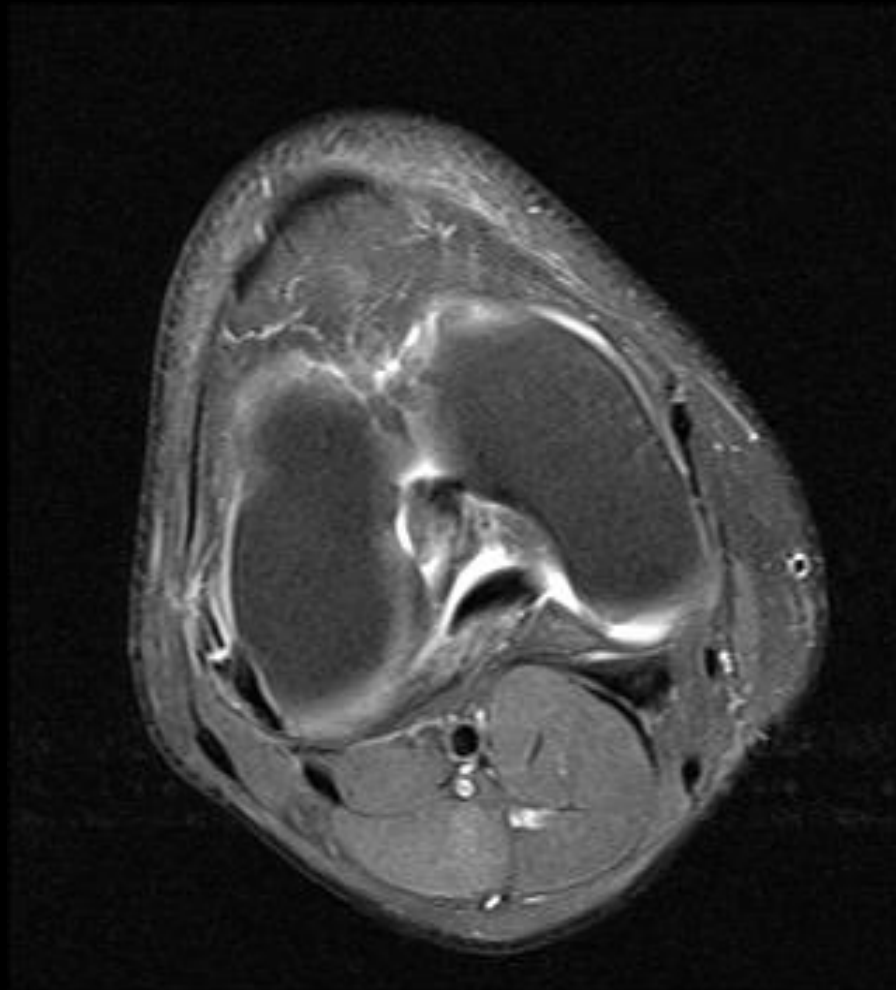
Axial PD



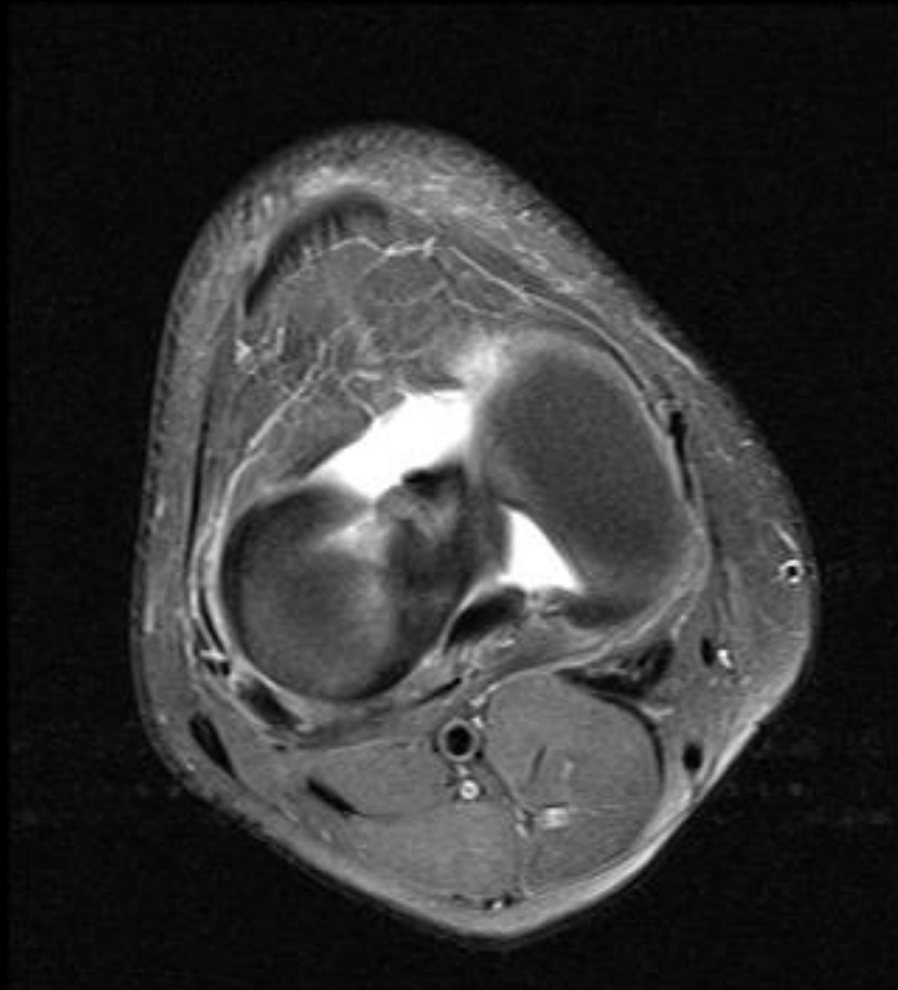
Axial PD



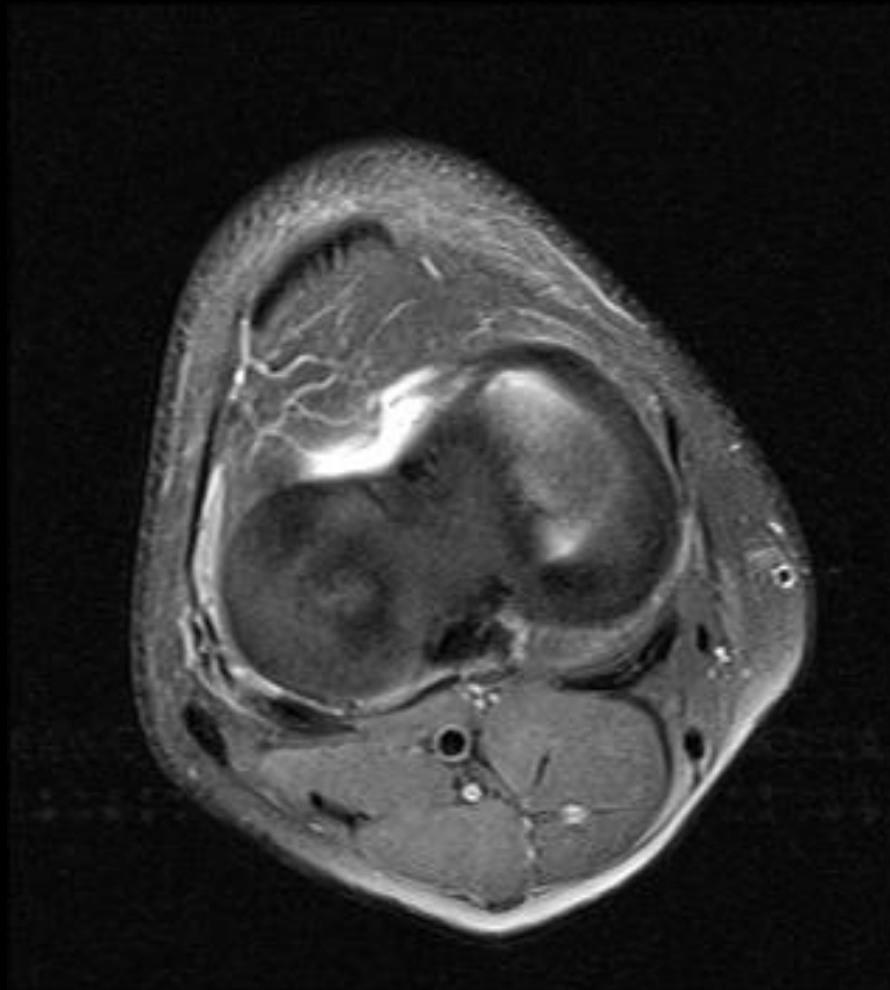
Axial PD



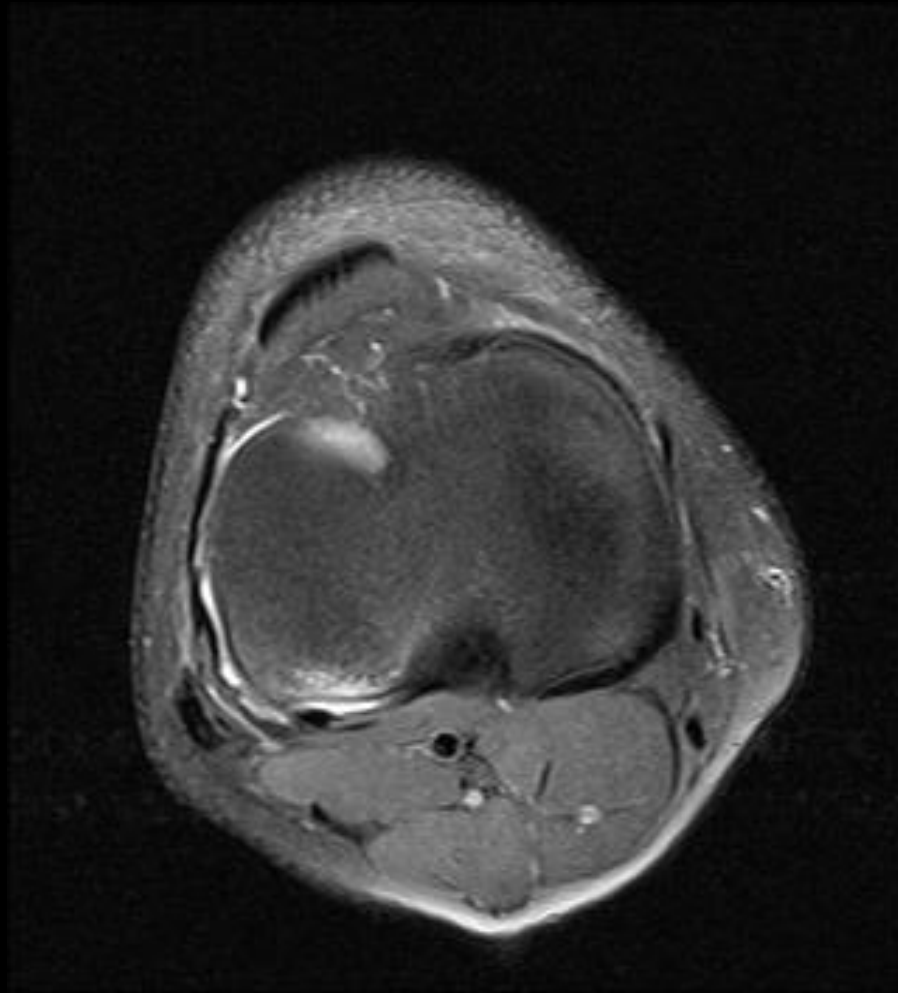
Axial PD



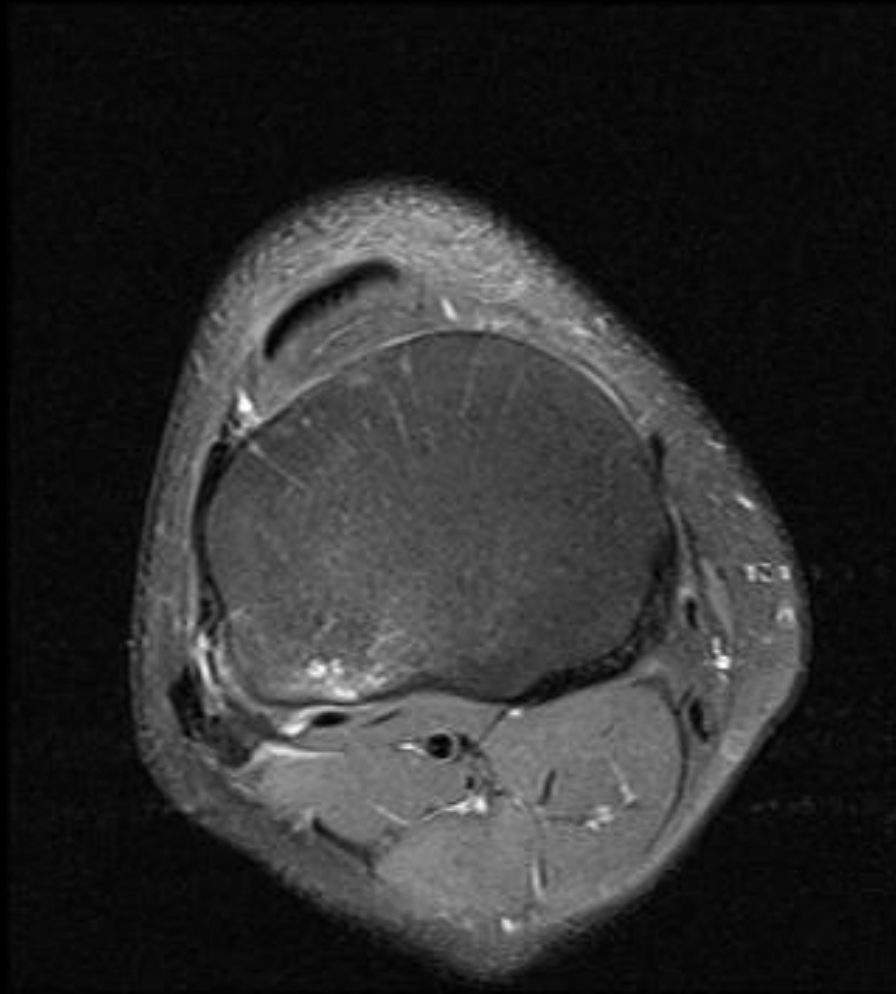
Axial PD



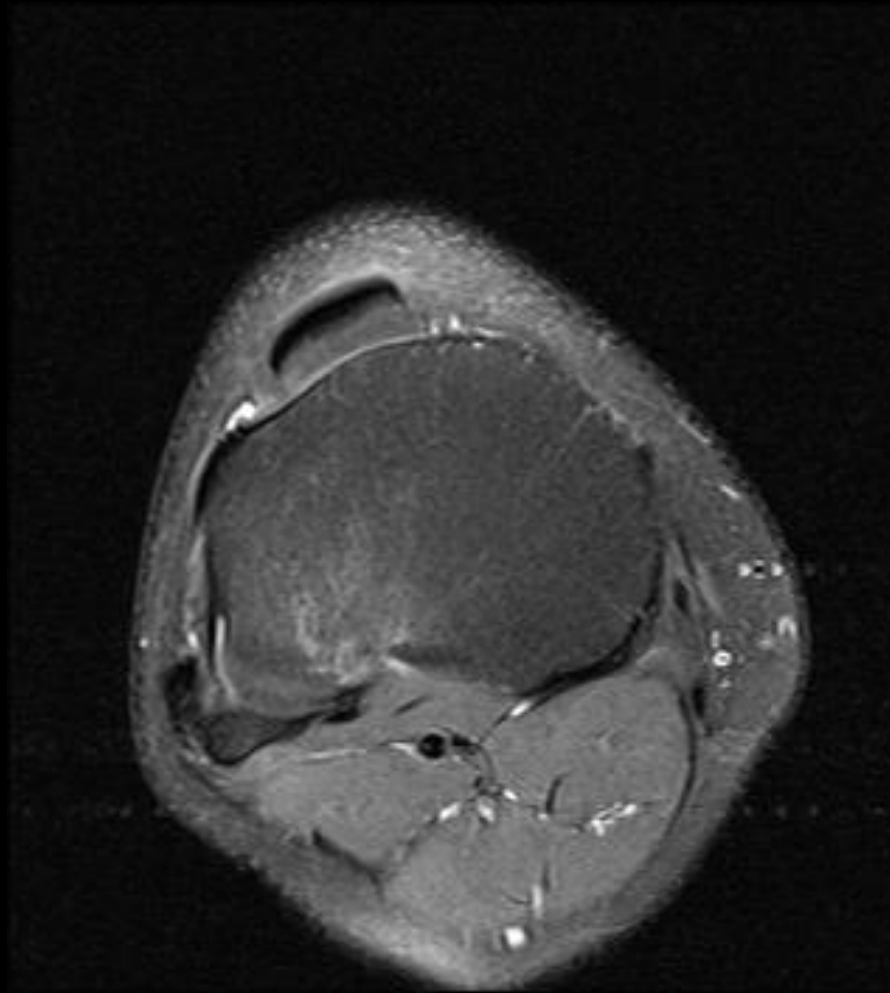
Axial PD



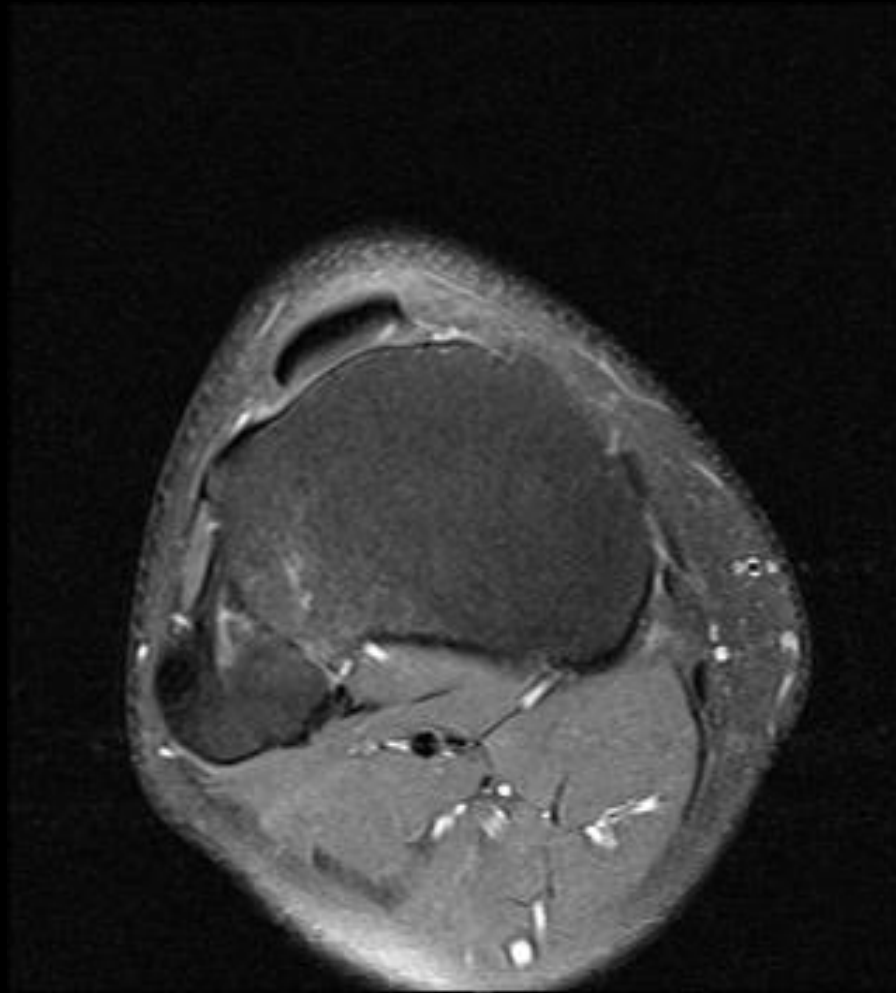
Axial PD



Axial PD



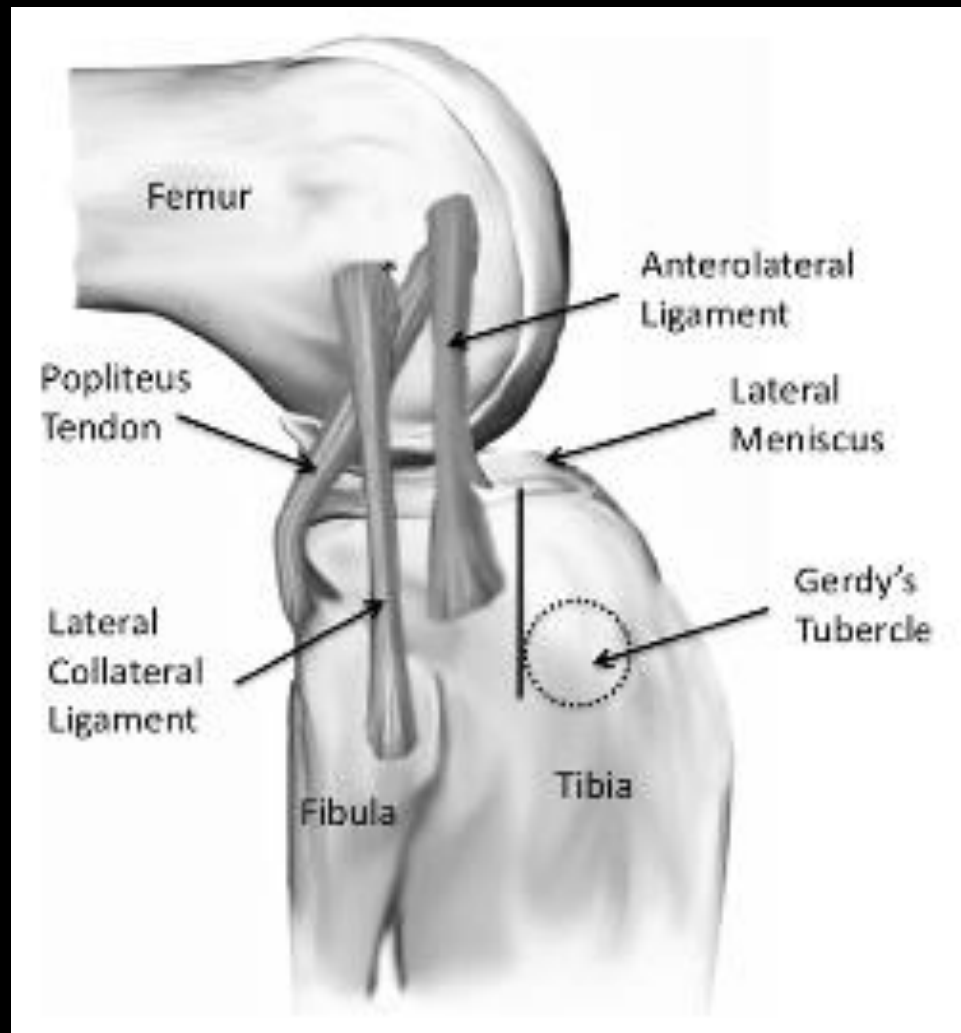
Axial PD



Anterolateral Ligament

- Origin
 - Near or on the popliteus insertion
- Insertion
 - Lateral meniscus and tibial plateau
 - 5 mm distal to the articular surface
 - Posterior to Gerdy's Tubercle

Anterolateral Ligament



Anterolateral Ligament

- Average width
 - 8.2 +/- 1.5 mm
- Average length
 - 34.1 +/- 3.4 mm

Anterolateral Ligament

- May play a role in preventing anterior tibial translation
- Role in meniscal stability and the pathology of meniscal tears remains unclear

References

- Vincent JP, Magnussen RA, Gezmez F, Uguen A, Jacobi M, Weppe F, Al-Saati MF, Lustig S, Demey G, Servien E, Neyret P. The anterolateral ligament of the human knee: an anatomic and histologic study. *Knee Surg Sports Traumatol Arthrosc* (2012) 20:147-152.