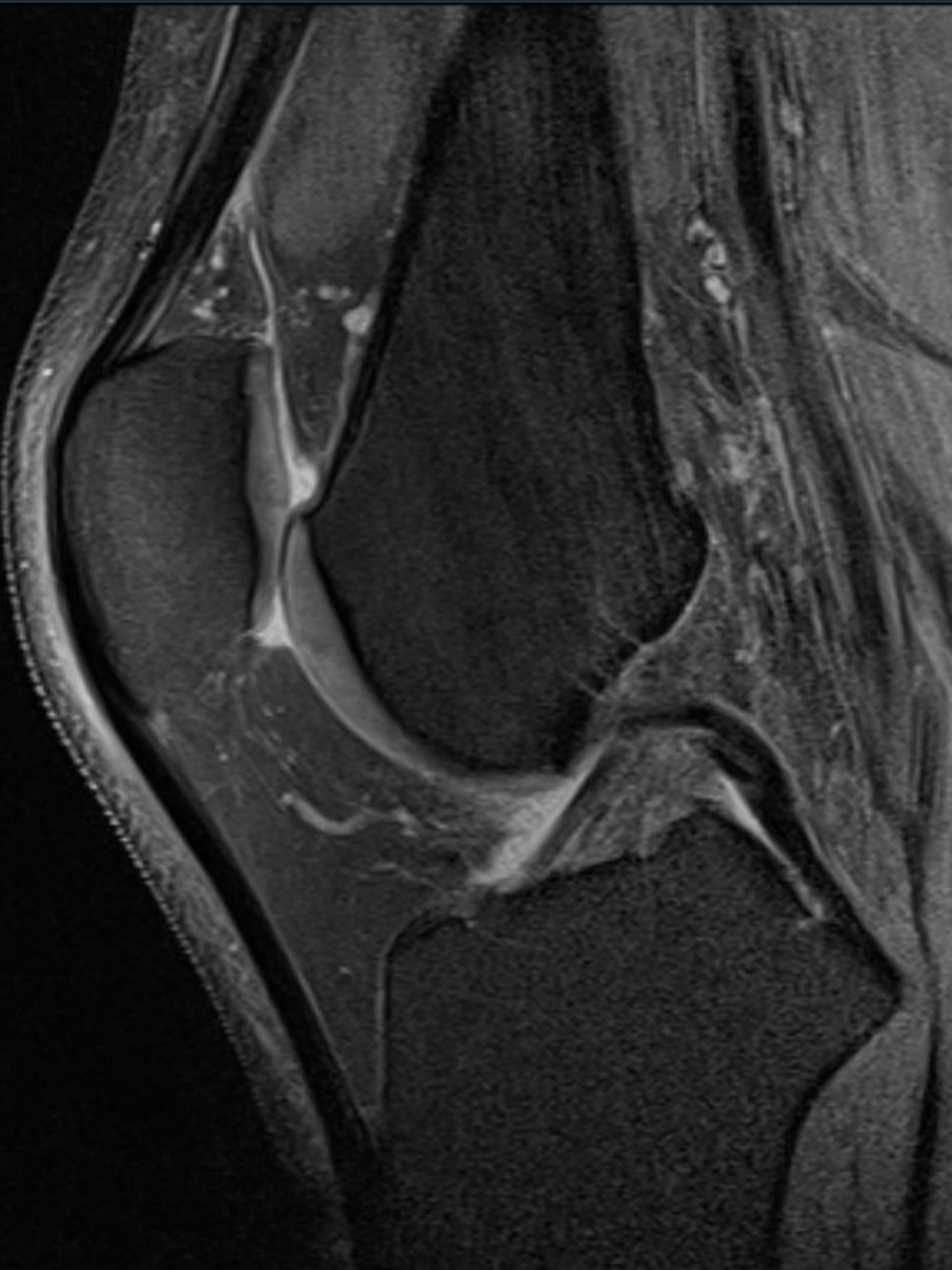


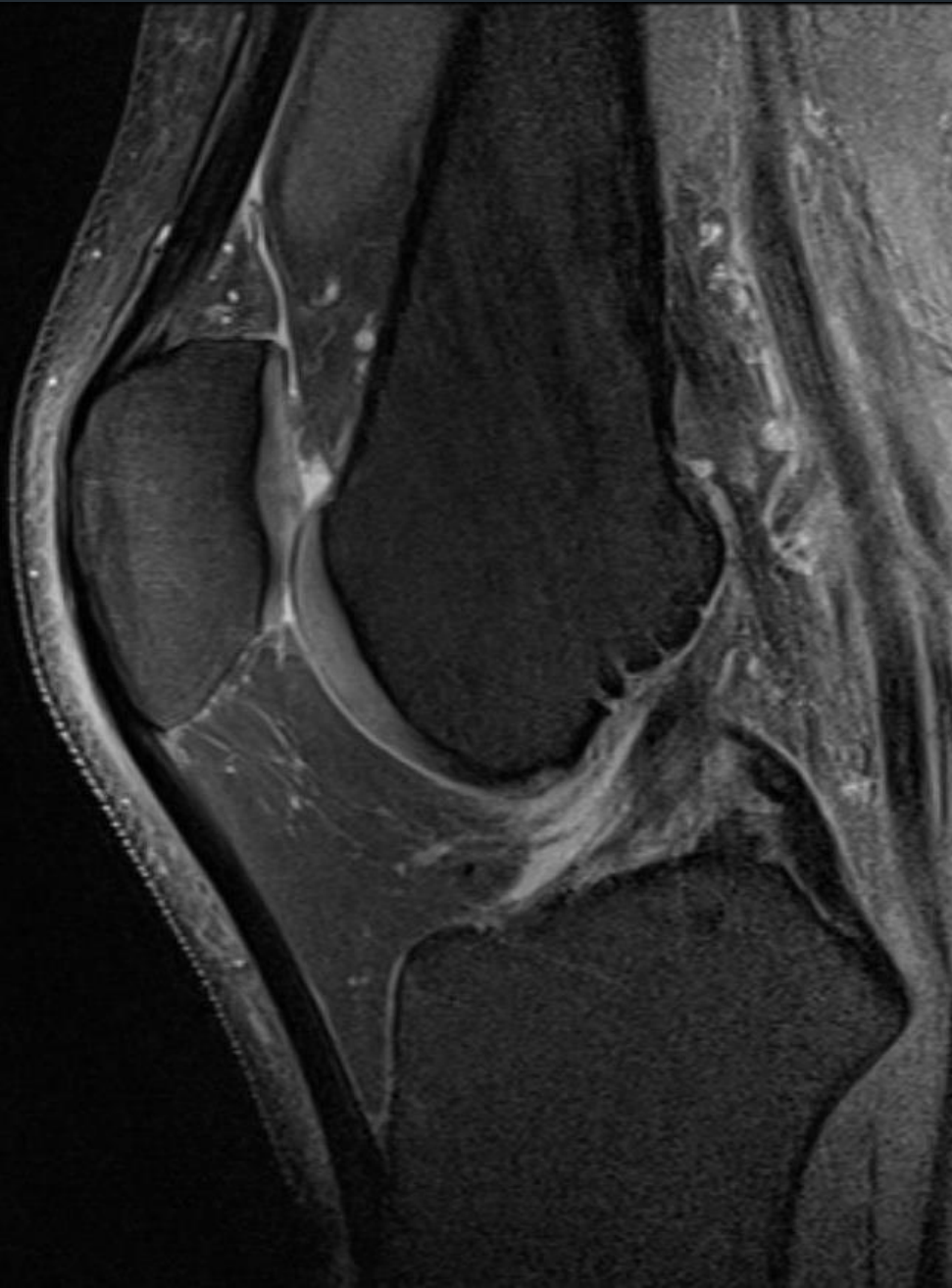


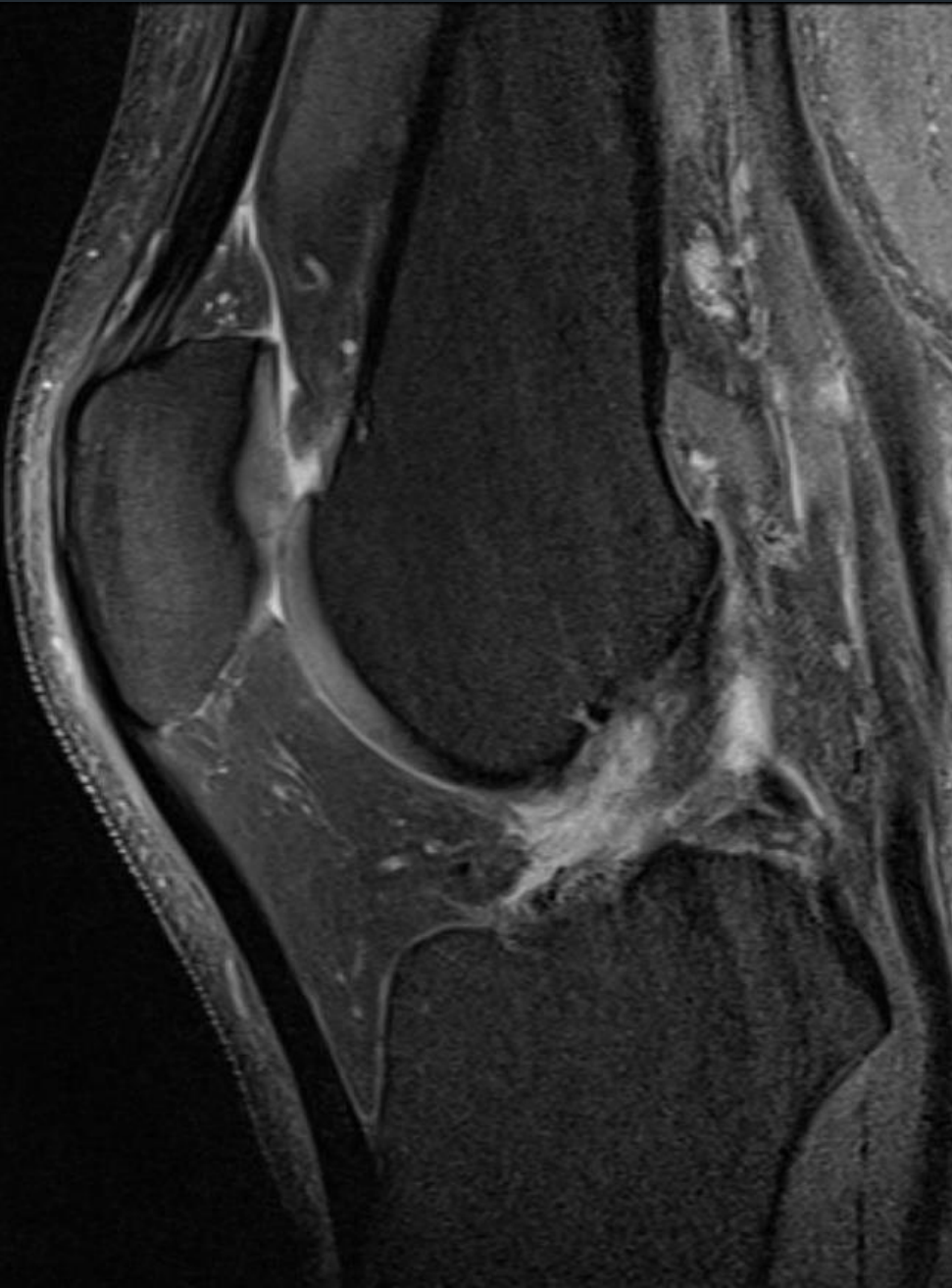
HISTORY

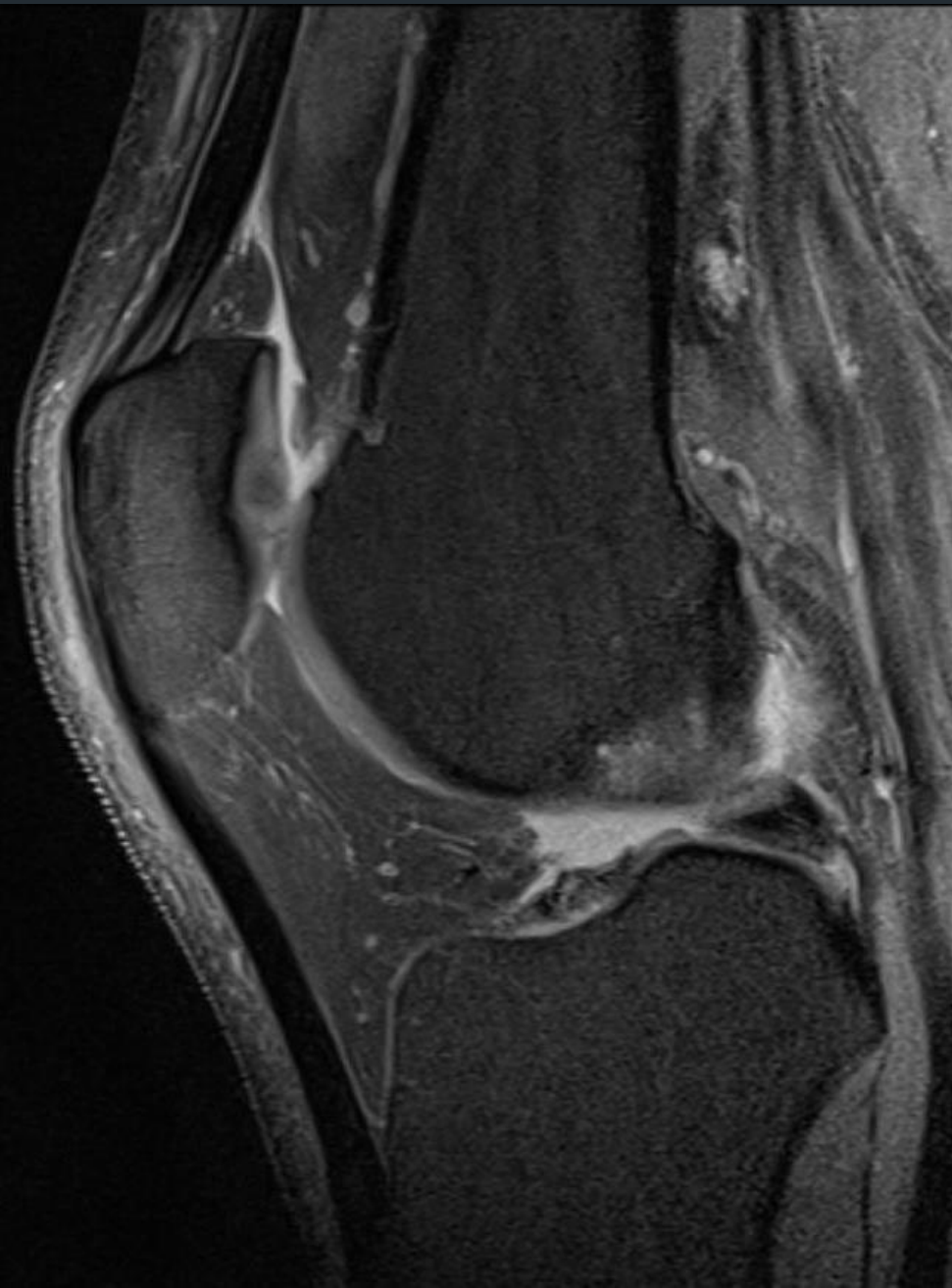
- 47 yo male
- Right knee pain, rule out internal derangement.

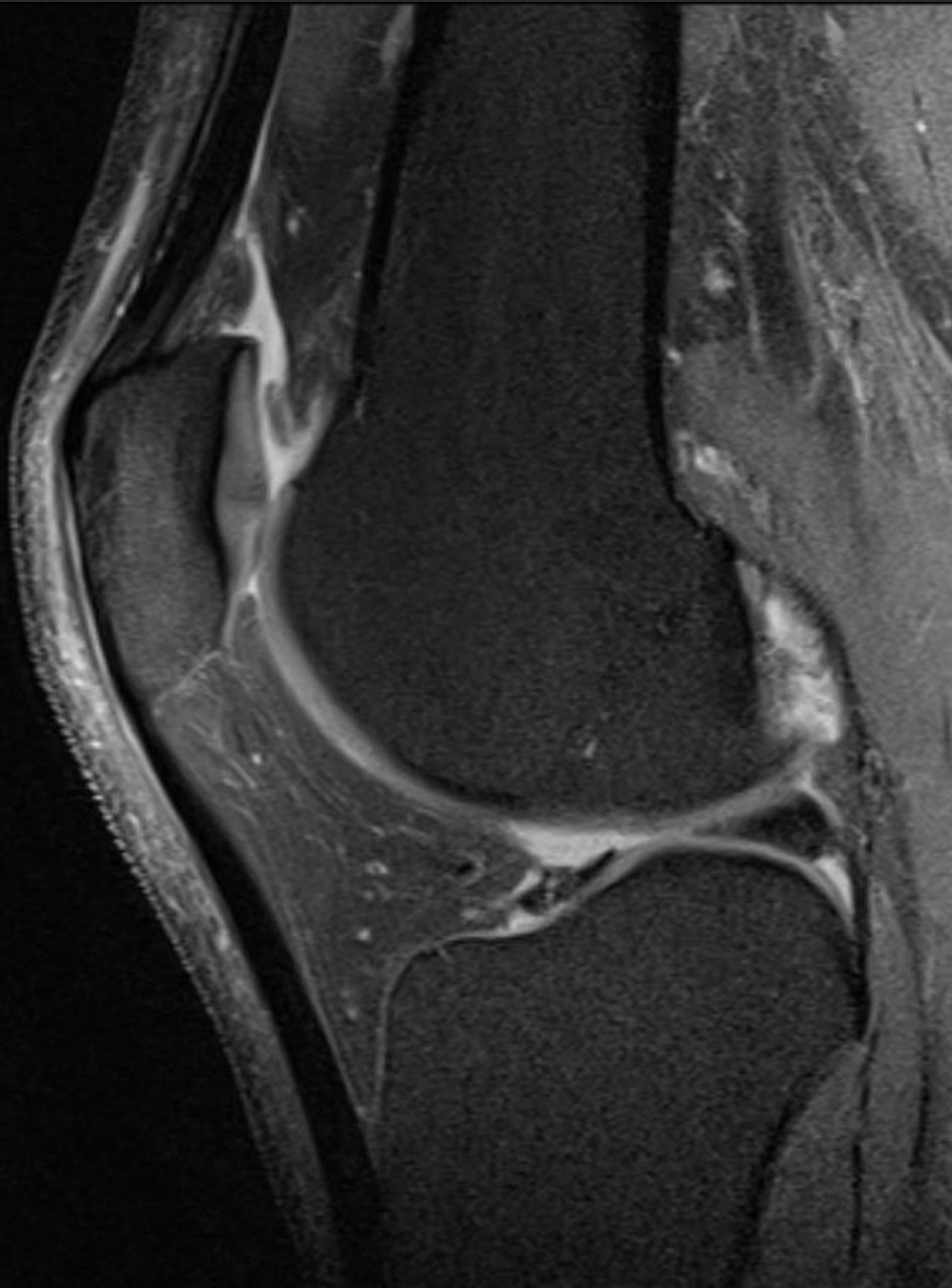




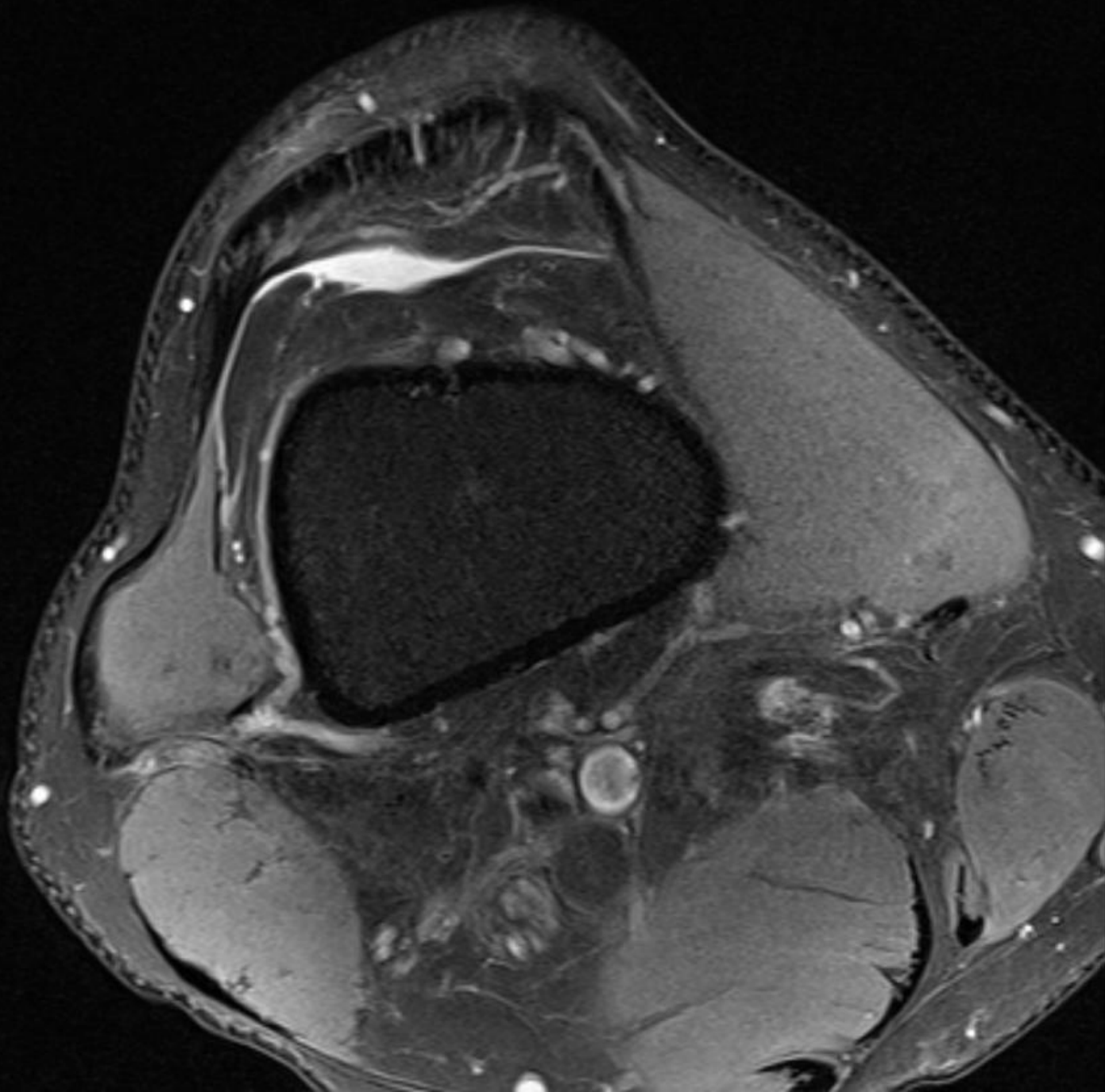


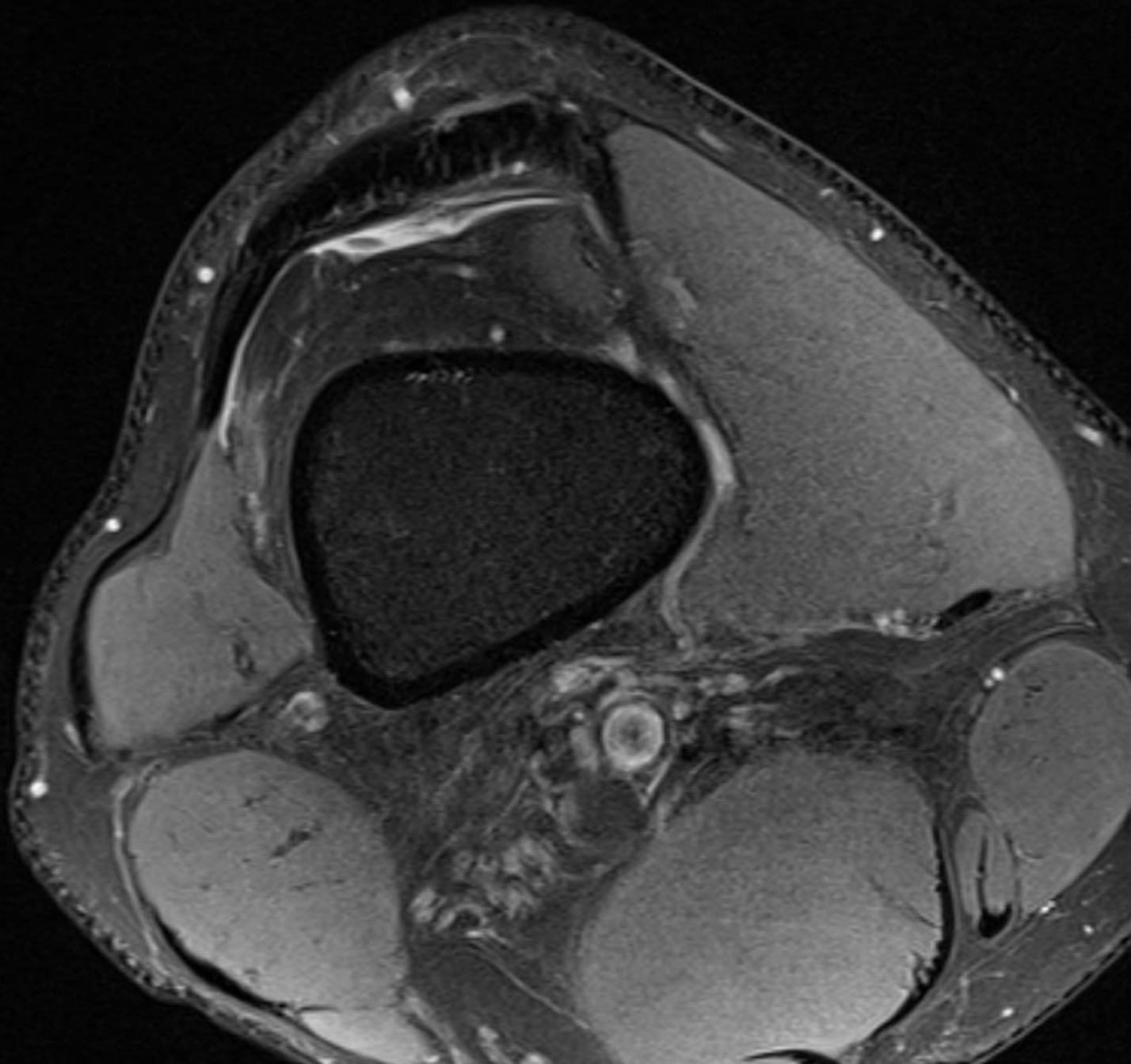


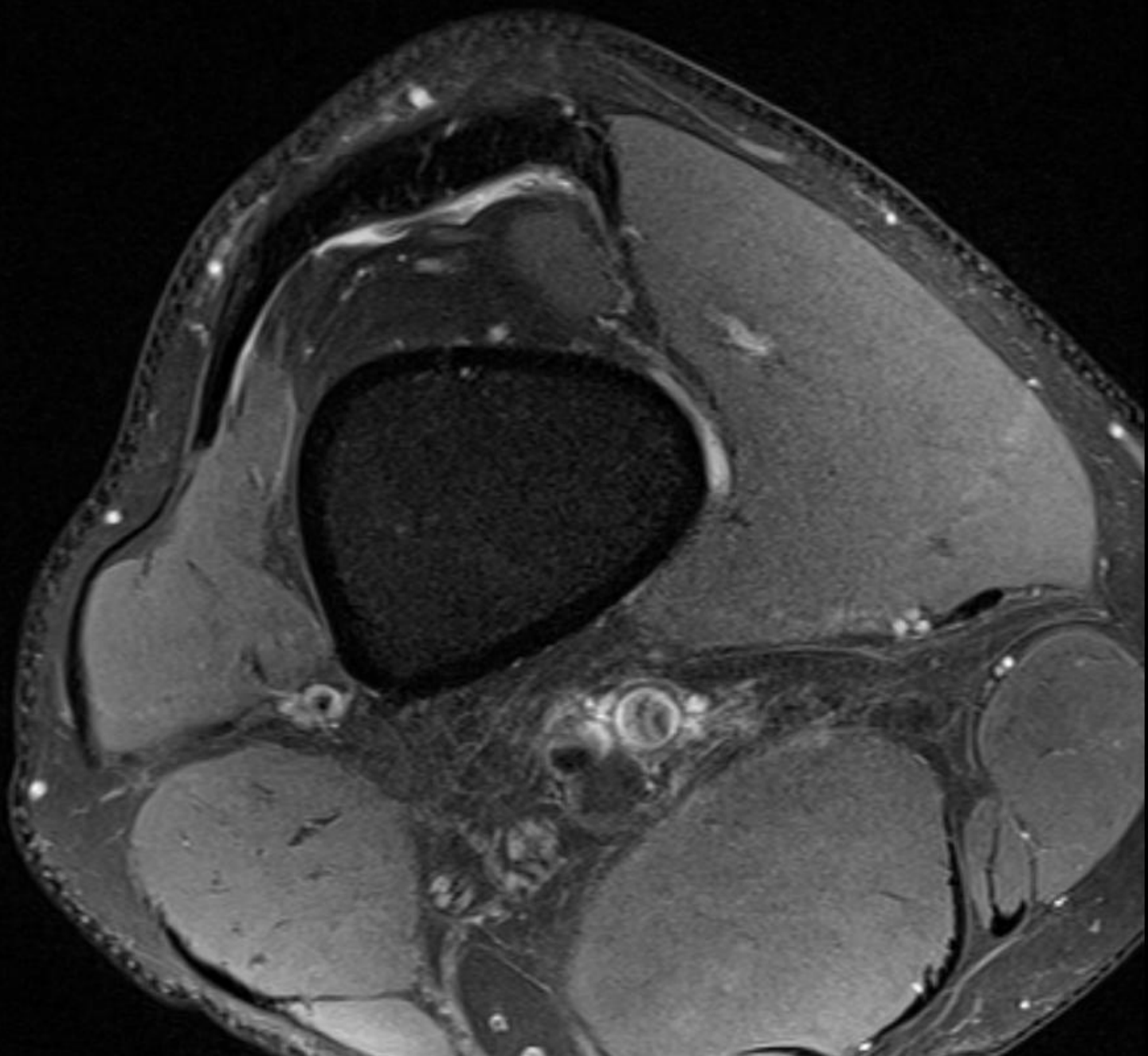


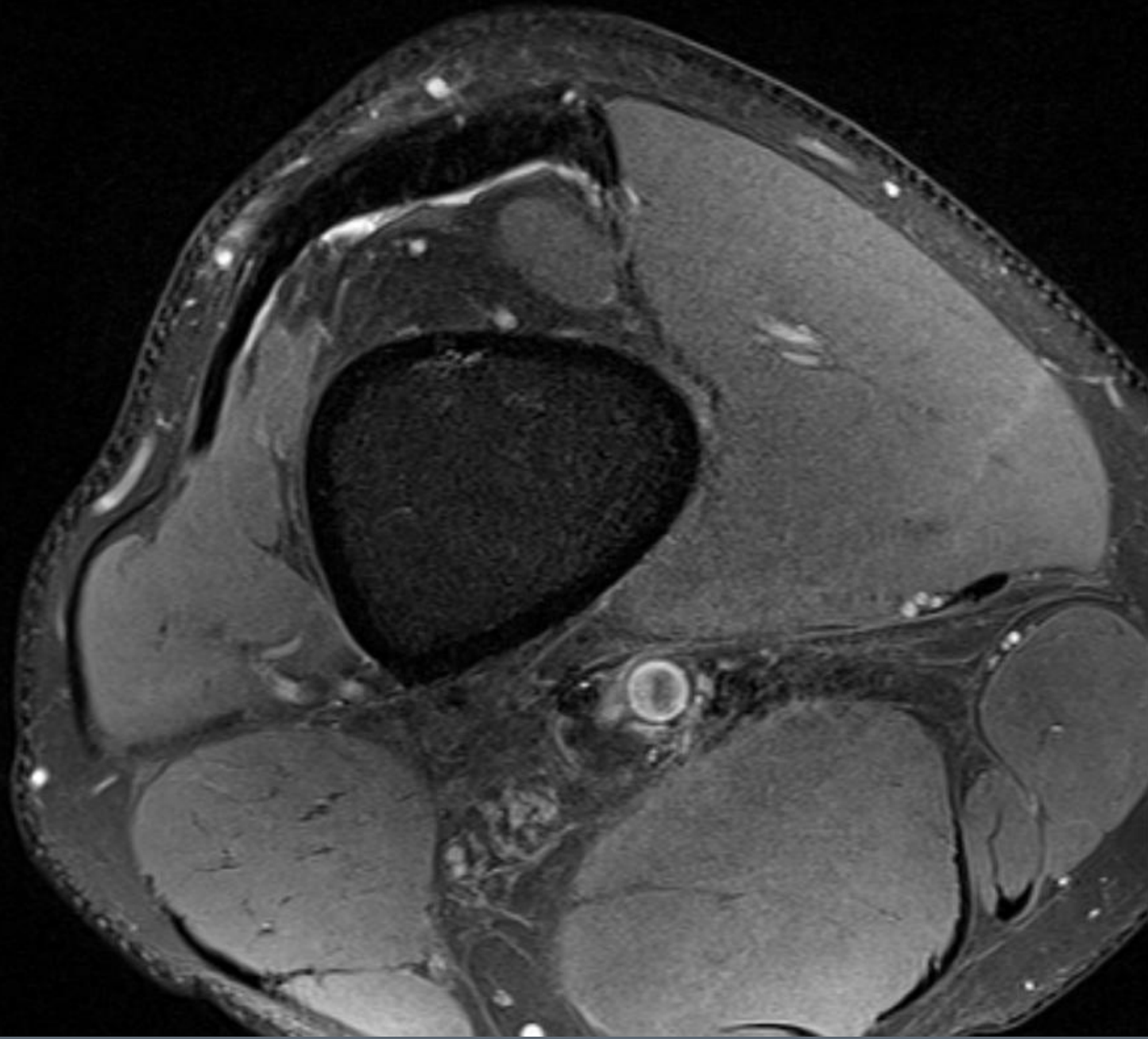















COPYRIGHT © 2012 BY THE JOURNAL OF BONE AND JOINT SURGERY, INCORPORATED

Articularis Genus: An Anatomic and MRI Study in Cadavers

Stephanie J. Woodley, BPhy, MSc, PhD, Christopher P. Latimer, BPhy, MSc,
Grant R. Meikle, MBChB, FRANZCR, and Mark D. Stringer, MS, FRCP(UK), FRCS(Engl)

Investigation performed at the University of Otago, Dunedin, New Zealand



Articularis genu muscle

- Present in 80-100% of individuals
- Originates from anterior aspect of distal third of the femur
- Inserts into the proximal or posterior aspect of the suprapatellar bursa
- Lies deep to and blends with the vastus medialis muscle



Articularis genu muscle

- Composed of 3 main layers:
 - Superficial
 - Intermediate
 - Deep
- Seven muscle bundles (underestimated on MRI)
 - *Lateral superficial bundle consistently identified



Articularis genu muscle

- Length 14 cm, cross sectional area $1.5 \pm 0.7 \text{ cm}^2$
- Extends a distance of $12.4 \pm 2.9 \text{ cm}$ proximal to the proximal pole of the patella




Function

- Supports normal position of the articular caspule and suprapetellar bursa during extension
- Retraction and elevation of the suprapatellar bursa during knee joint extension



Relationship with vastus medialis

- No distinct fascia separating both structures
- Common nerve supply: femoral nerve
- Small proportion of the of the superficial fascicles in the superficial layer of the articularis genus insert into the deep surface of the distal tendon of the vastus intermedius.



Hypertrophy of the articularis genu muscle

- In parallel with hypertrophy of the vastus muscles
- Reported in ACL tear with compensatory hypertrophy of the quadriceps muscles
 - Similar nerve supply



Articularis genu muscle

- Can be a potential cause of anterior knee pain
- Particularly in the setting of quadriceps atrophy