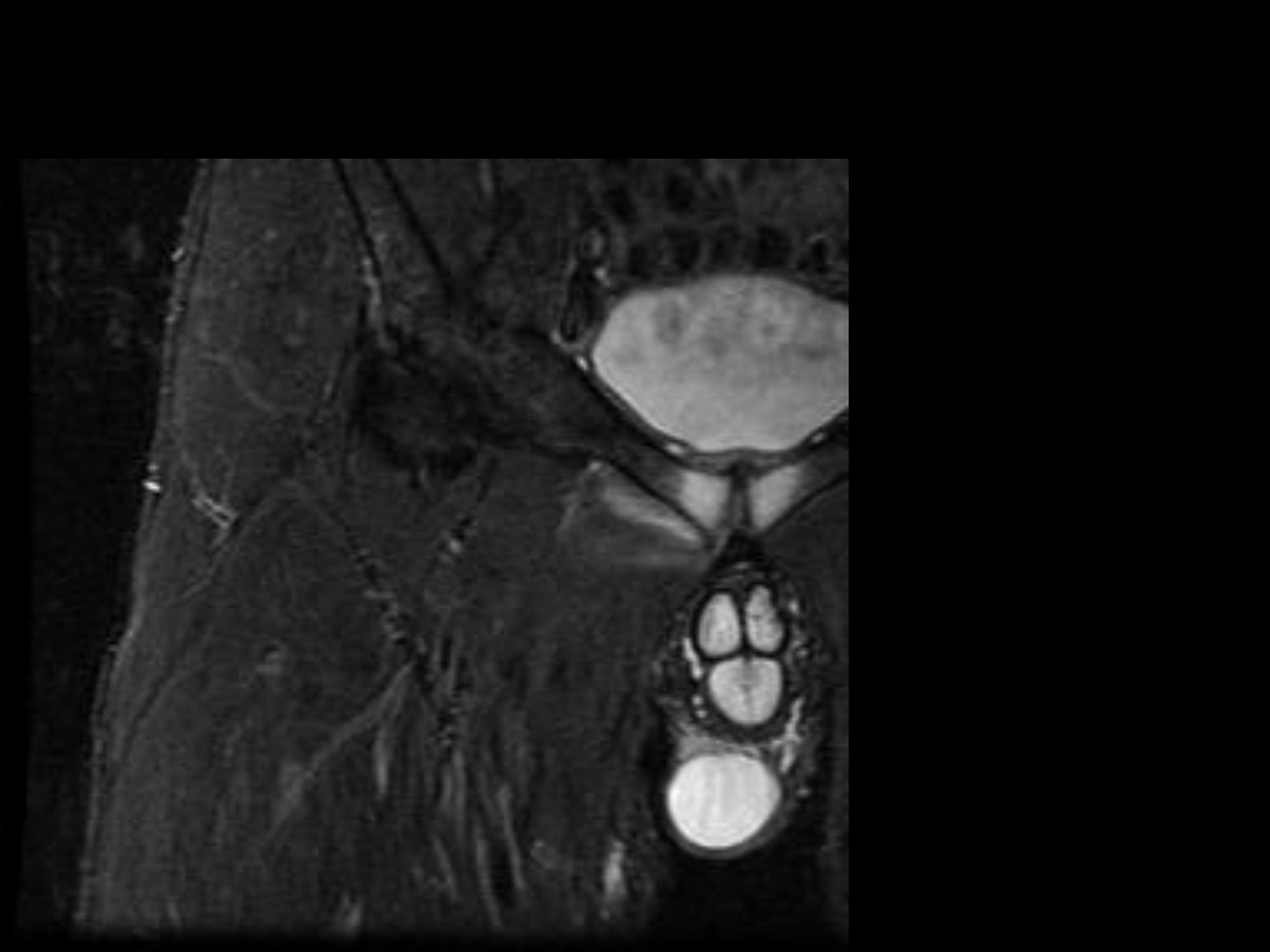
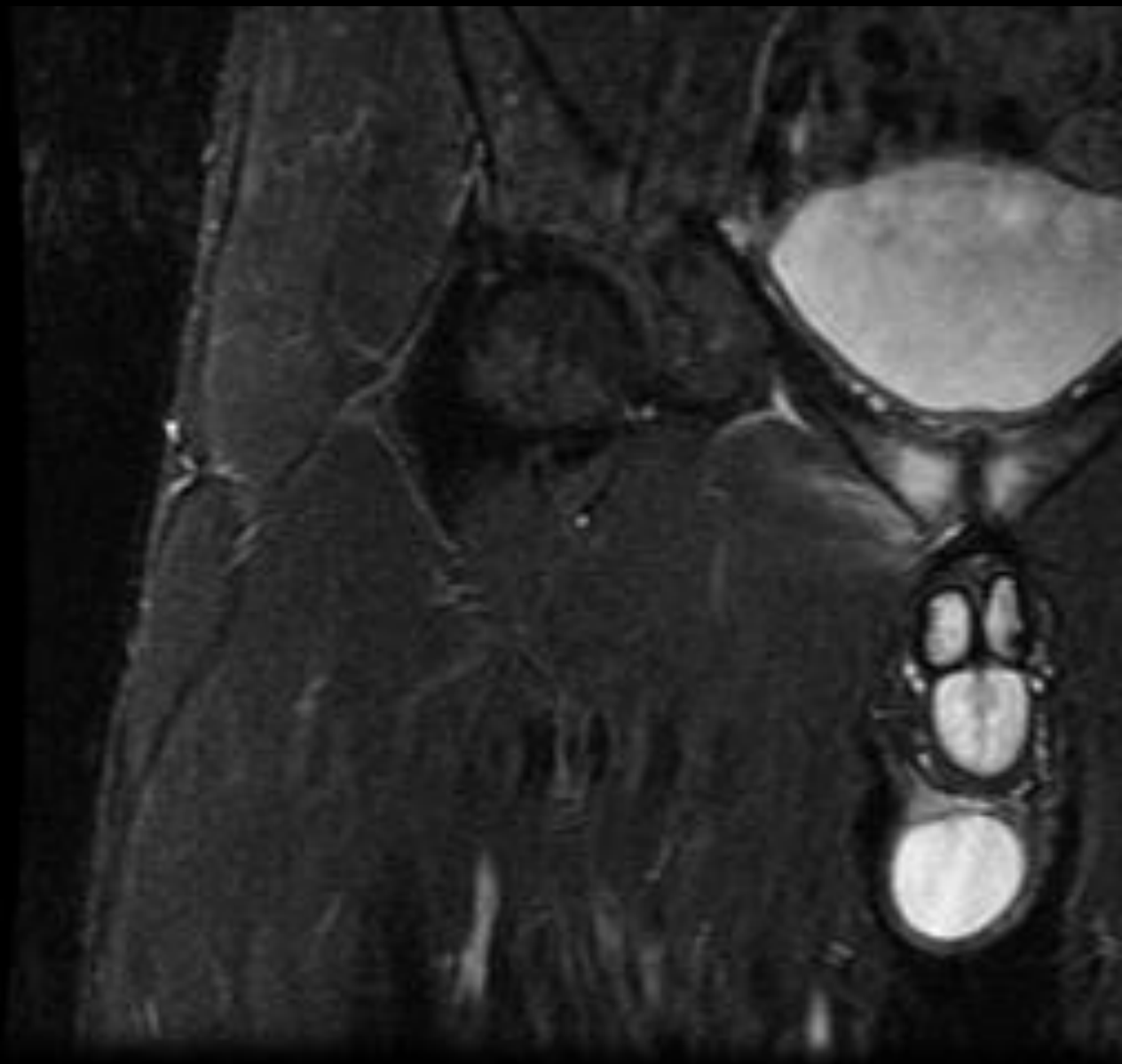
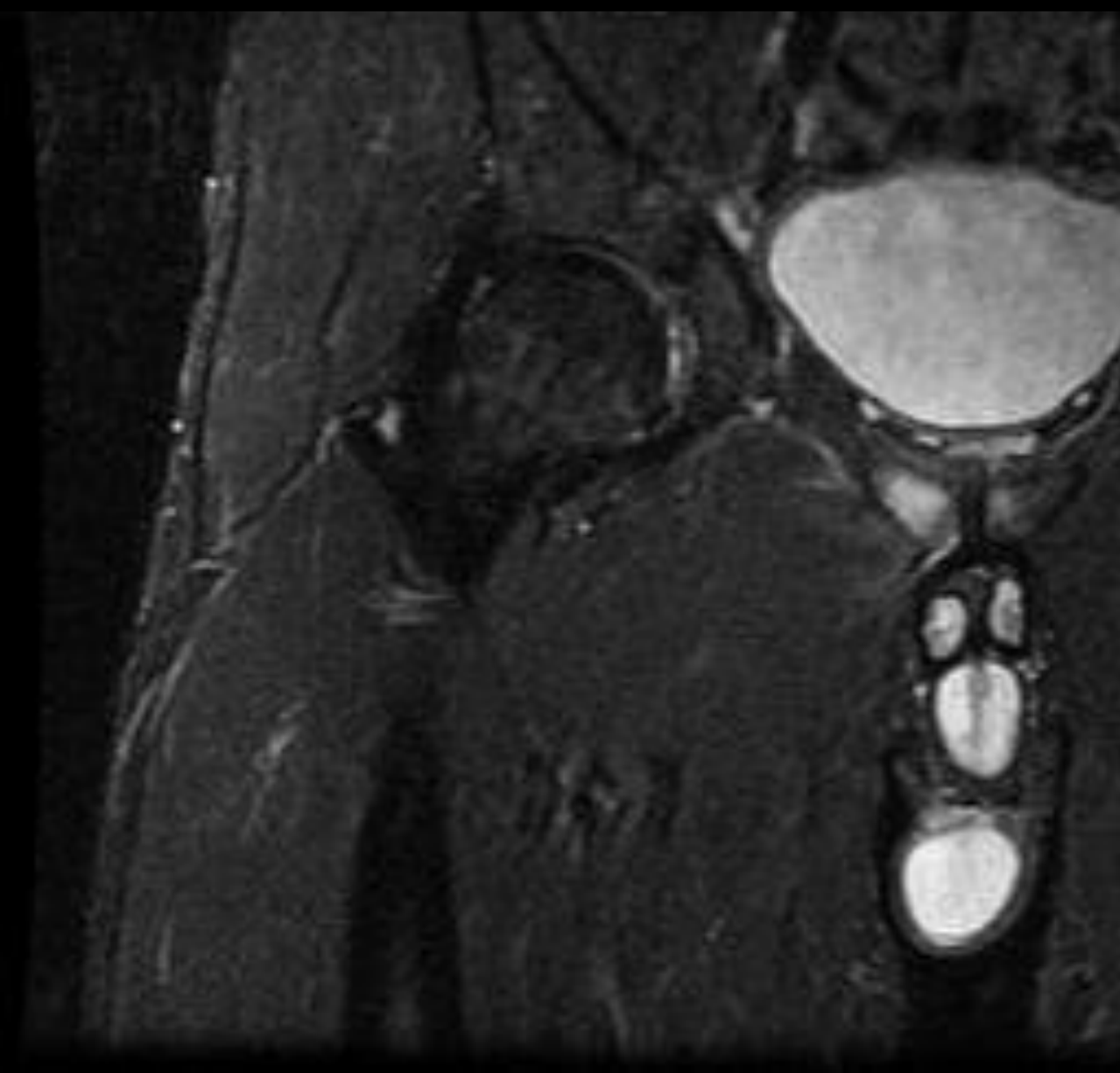


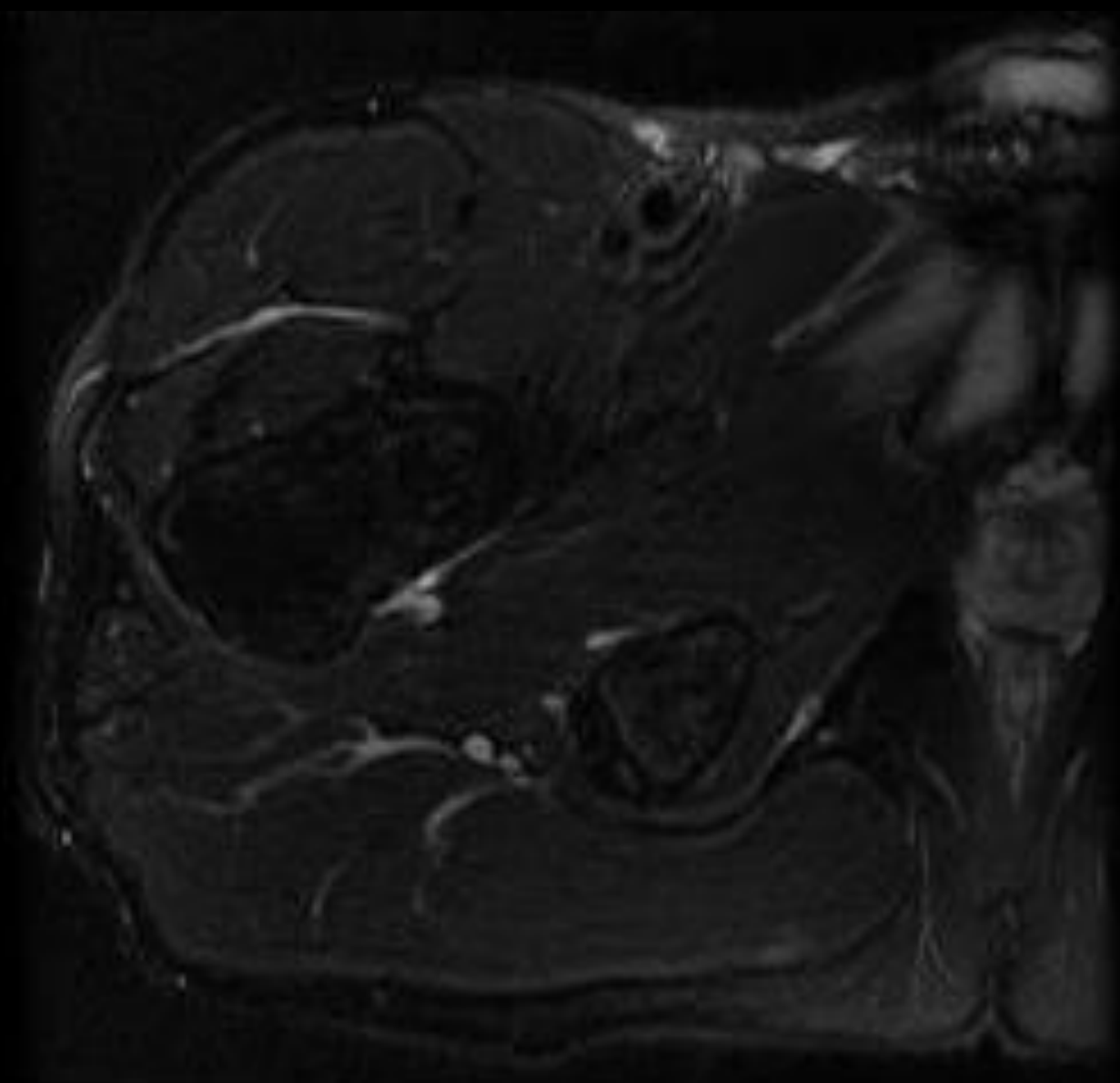
[CASE ONE]

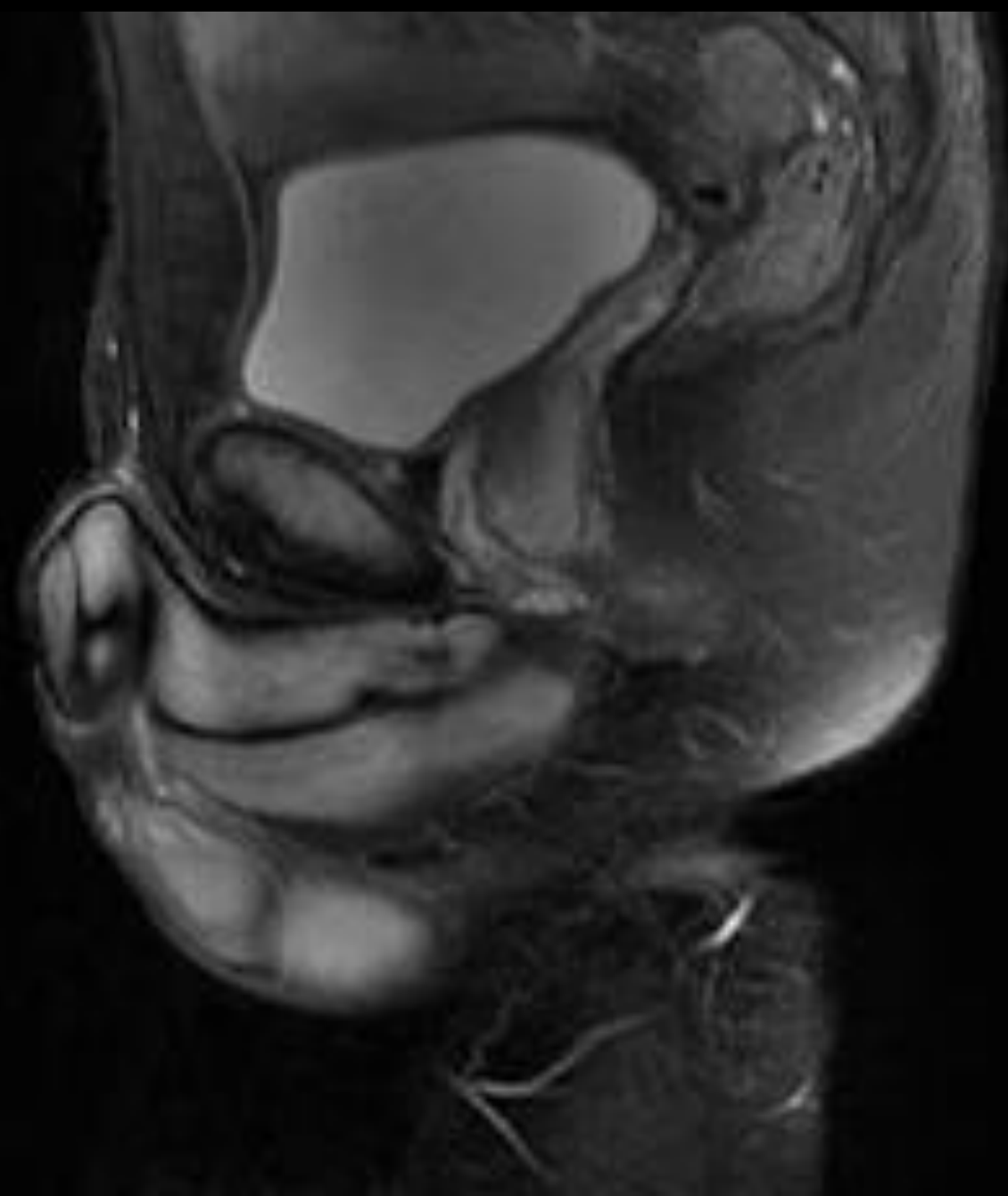
- *26 year-old male with groin pain following forced abduction injury. ..*

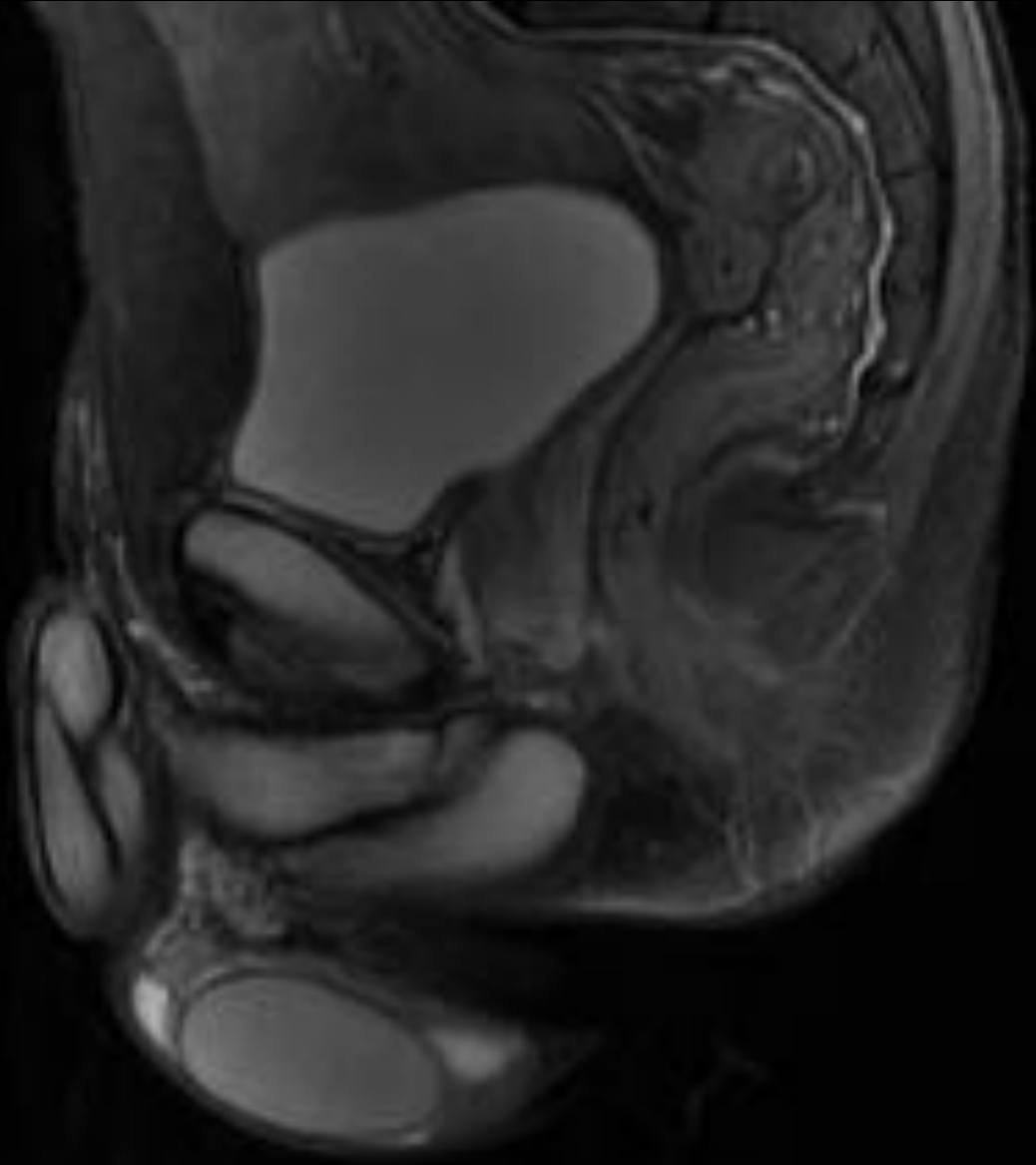












[CASE TWO]

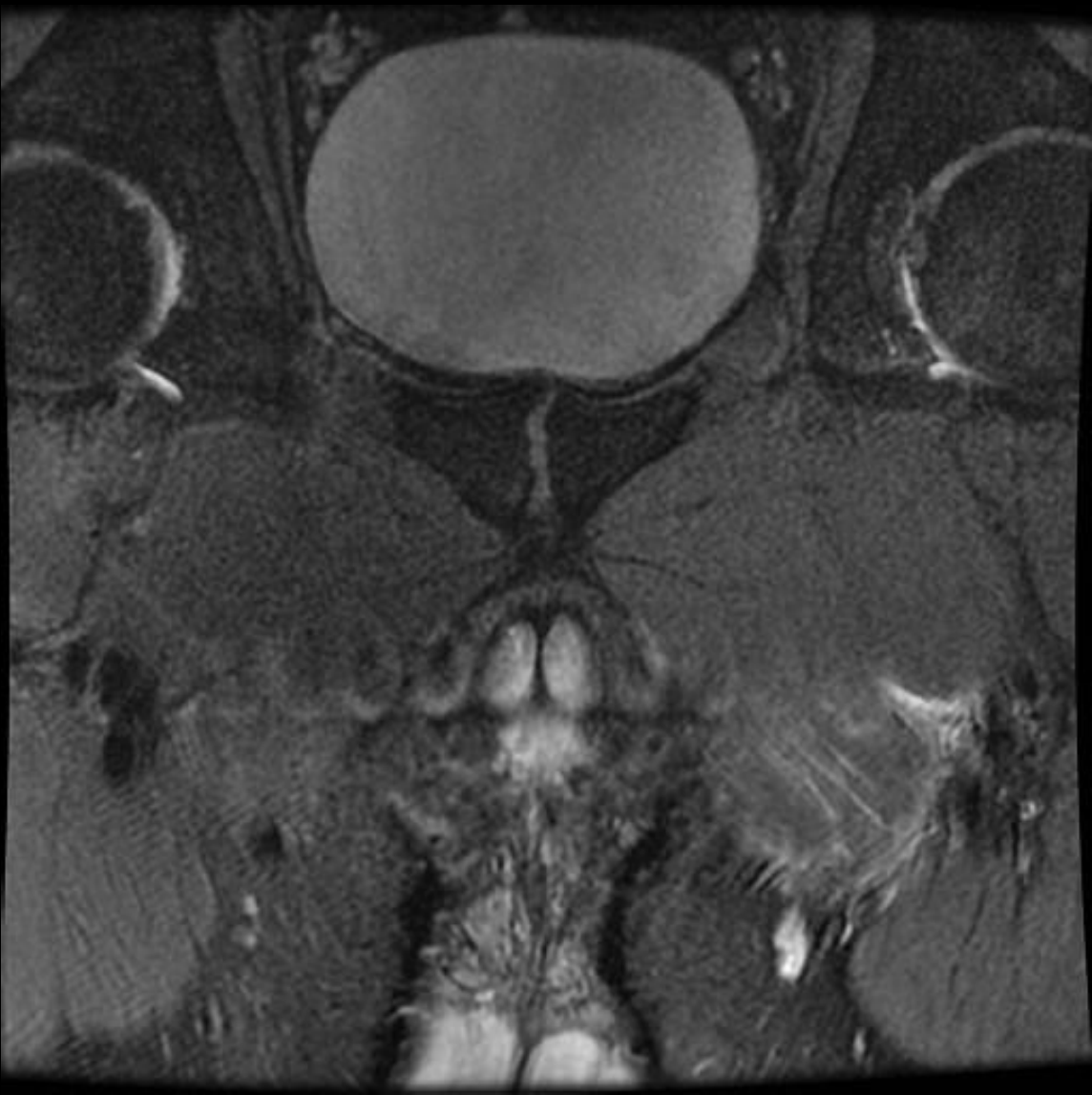
- *High level athlete, with adductor strain...*



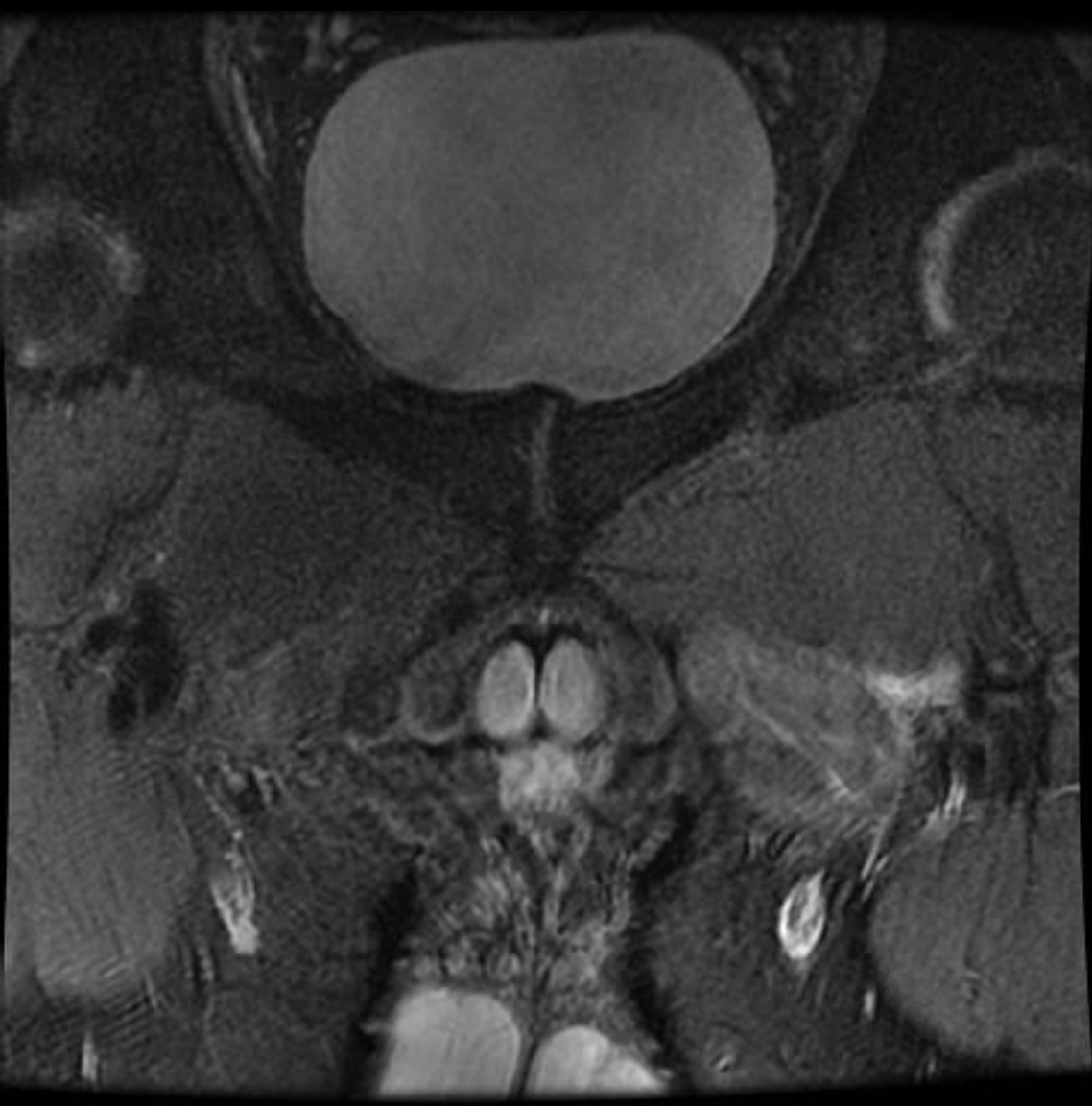






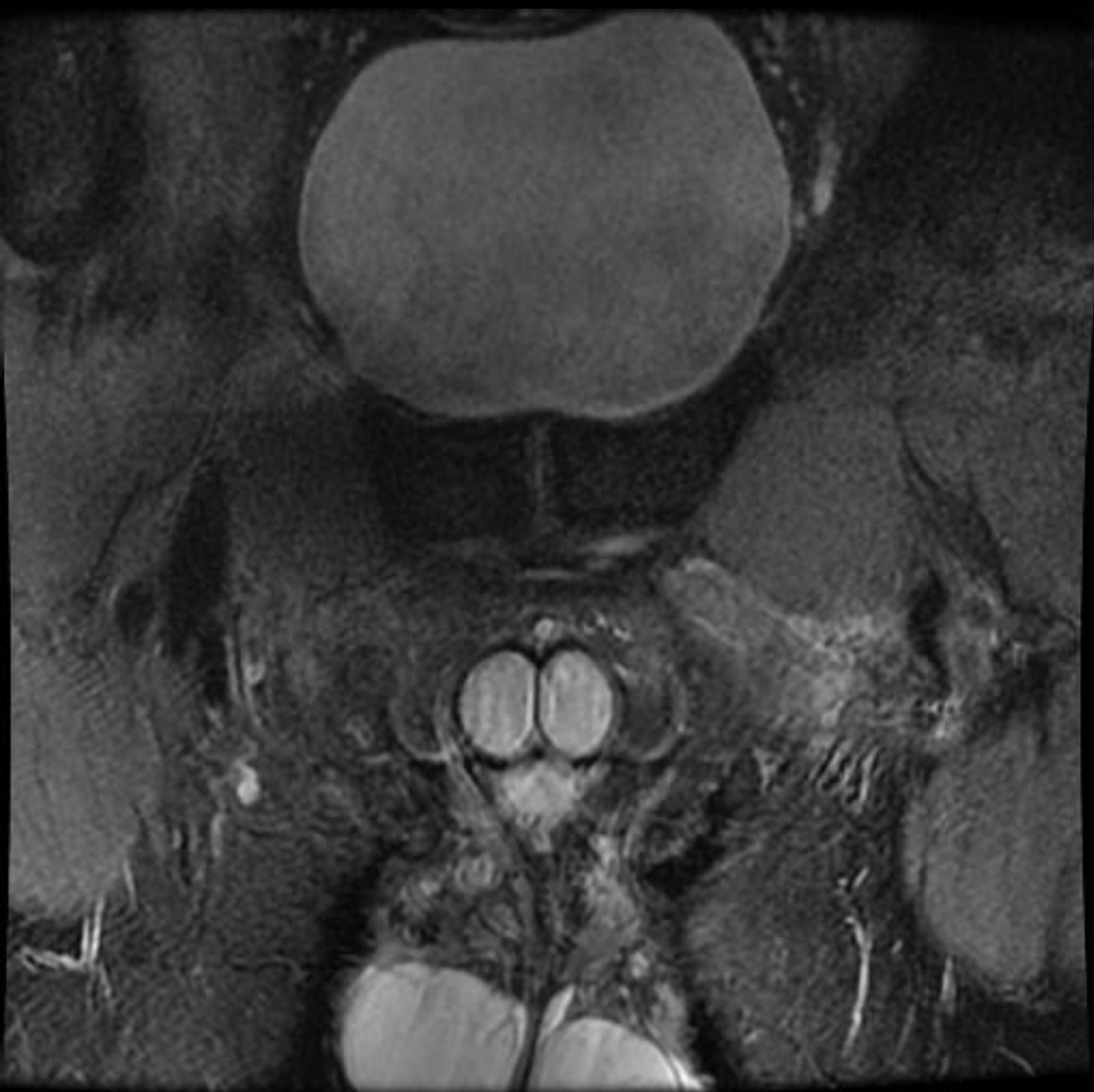






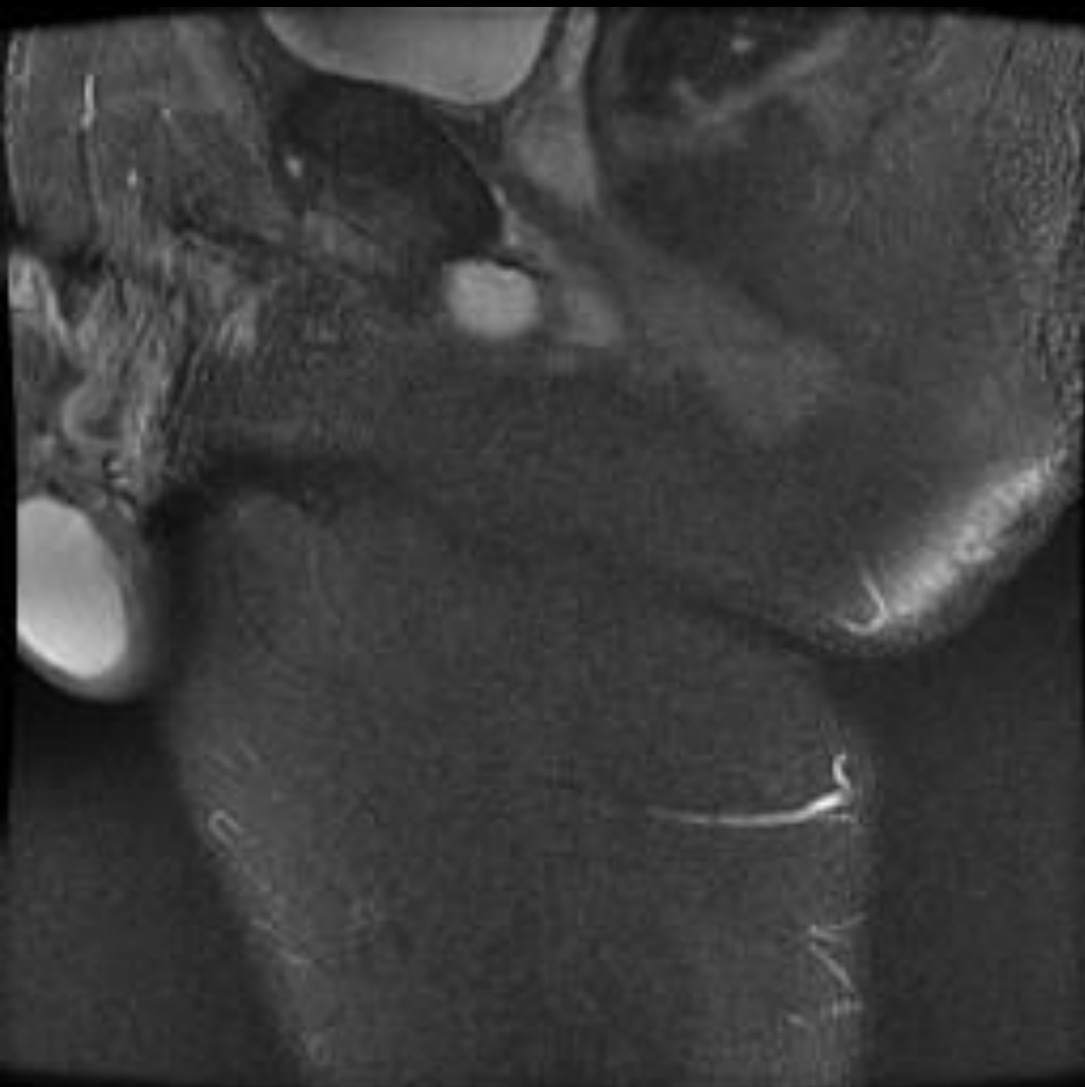




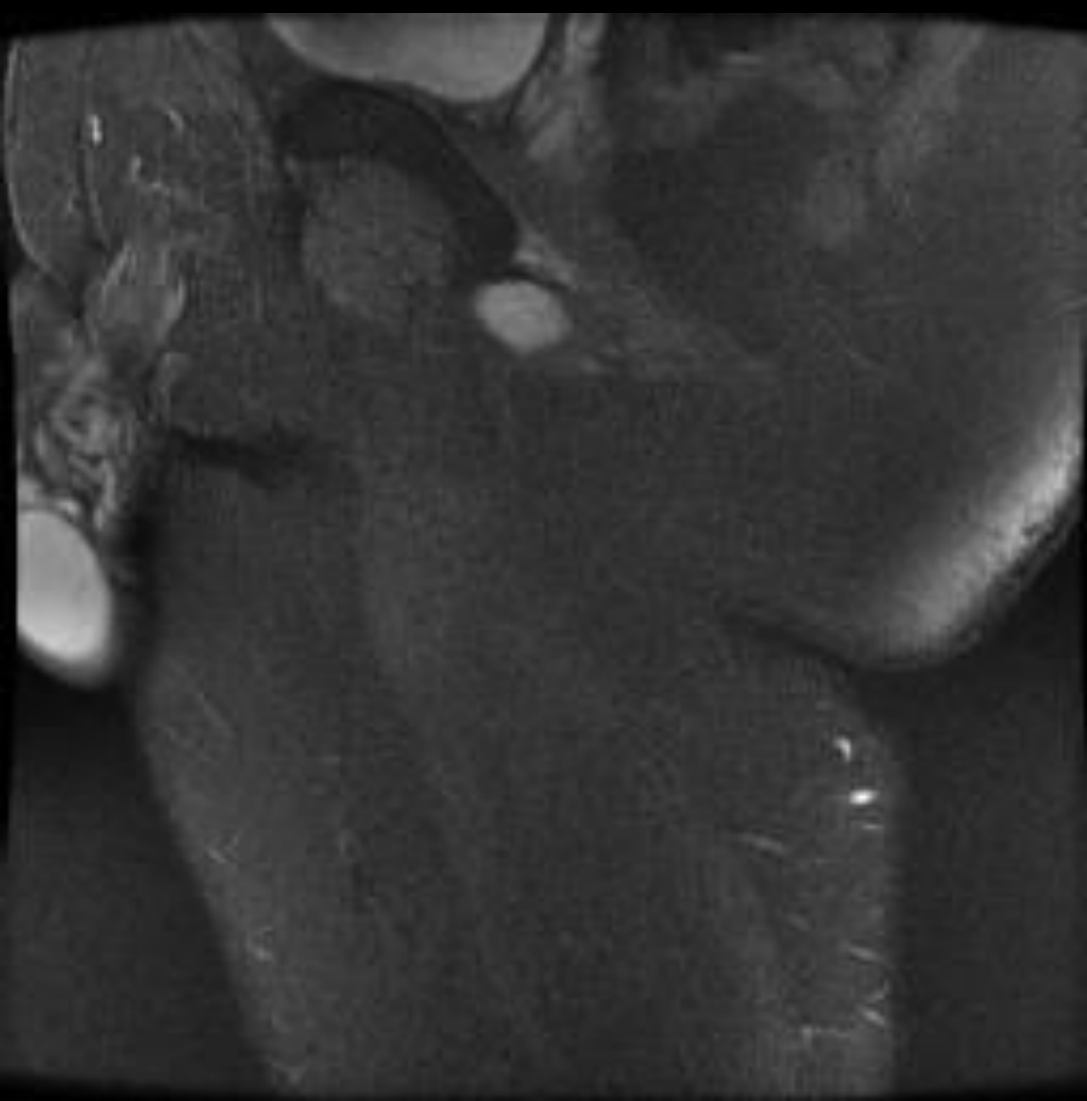


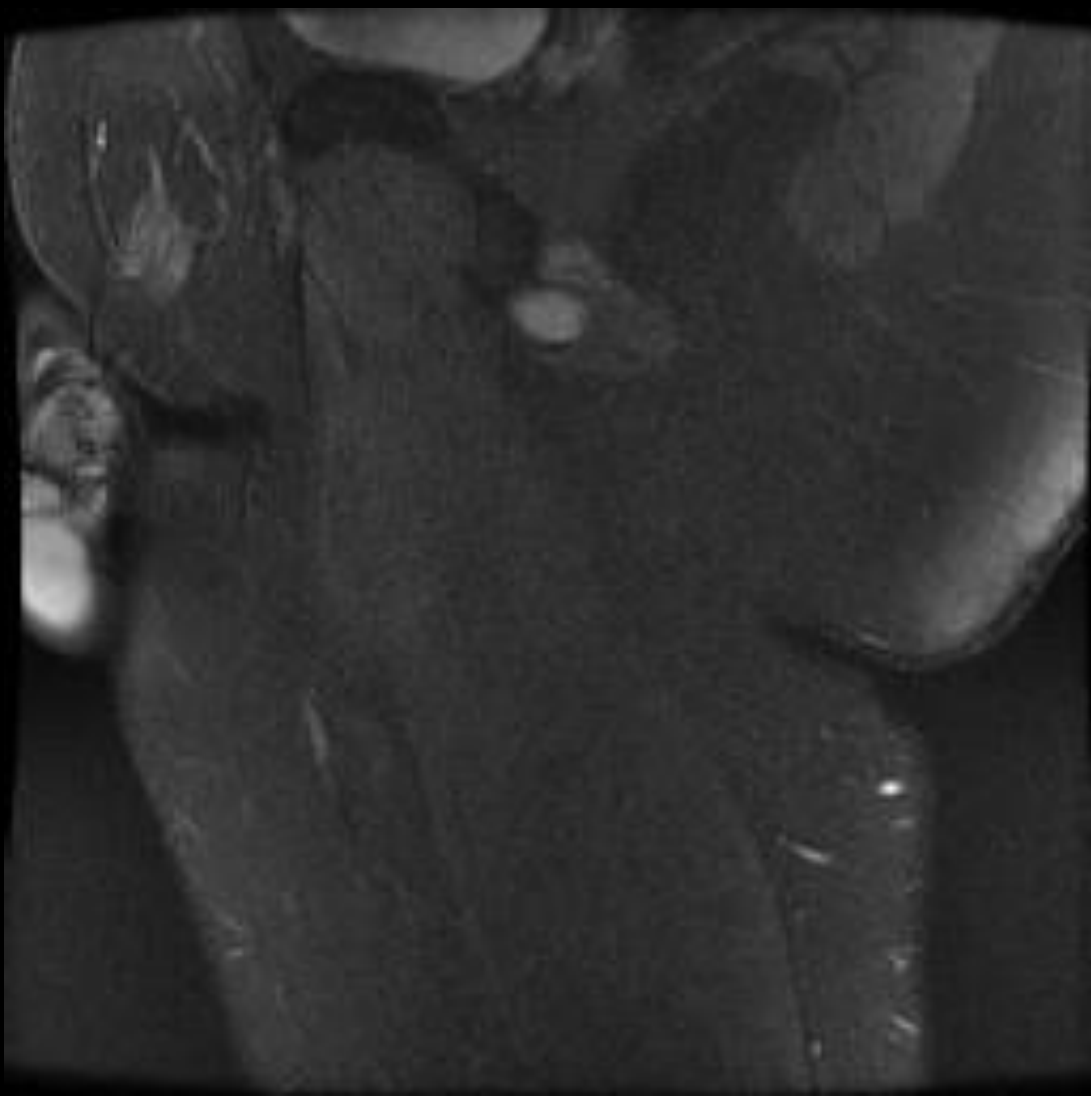


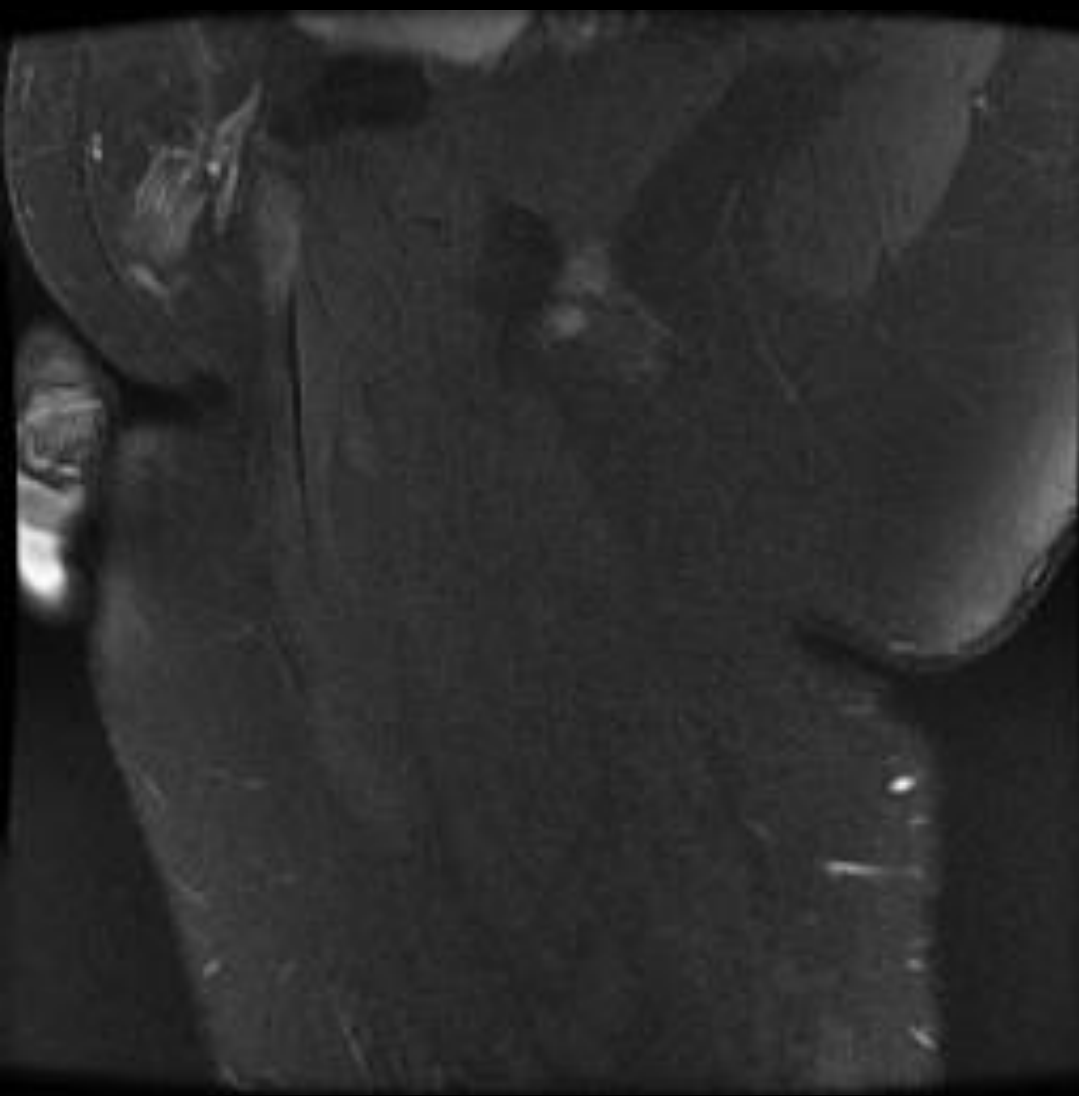


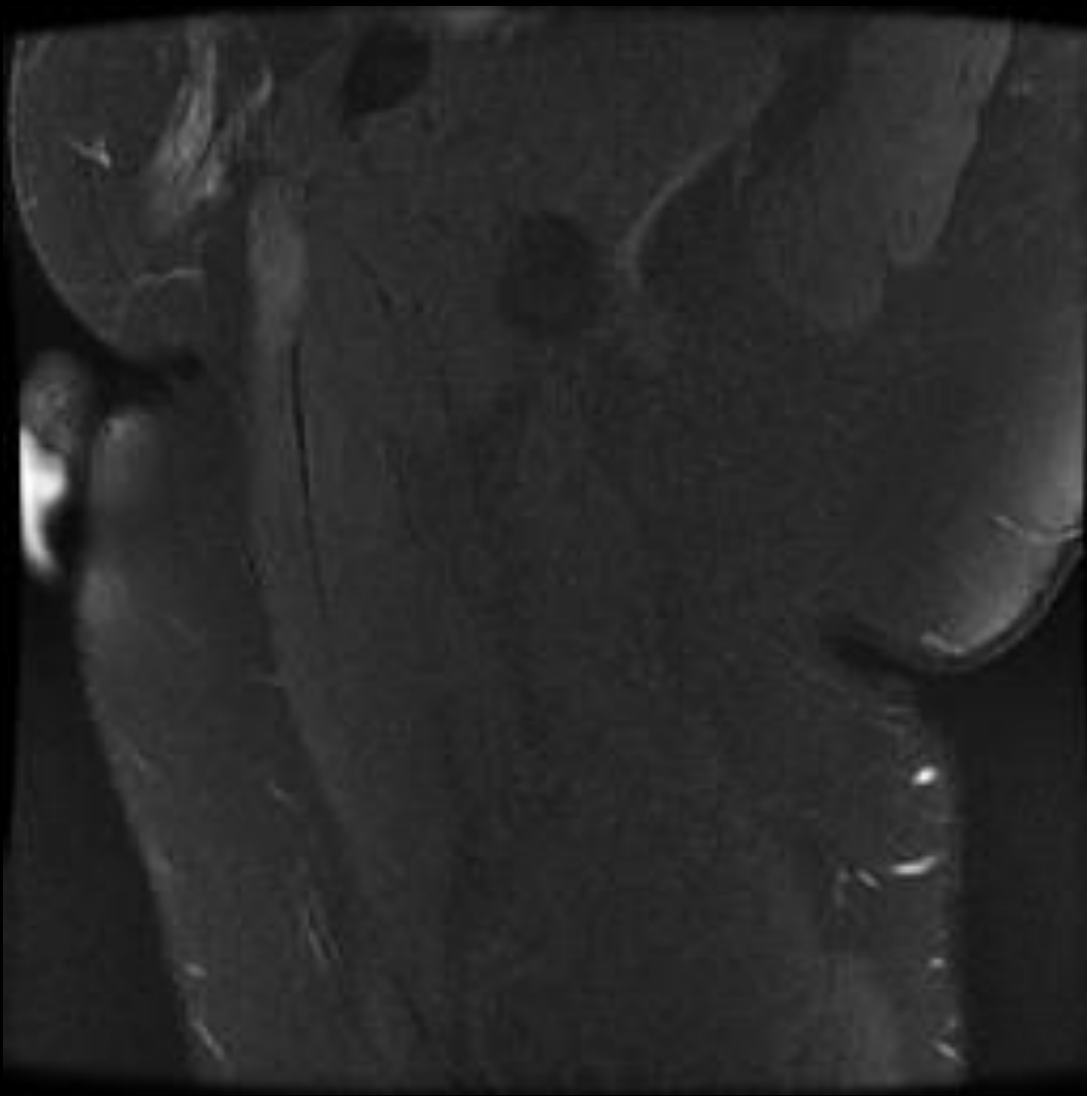


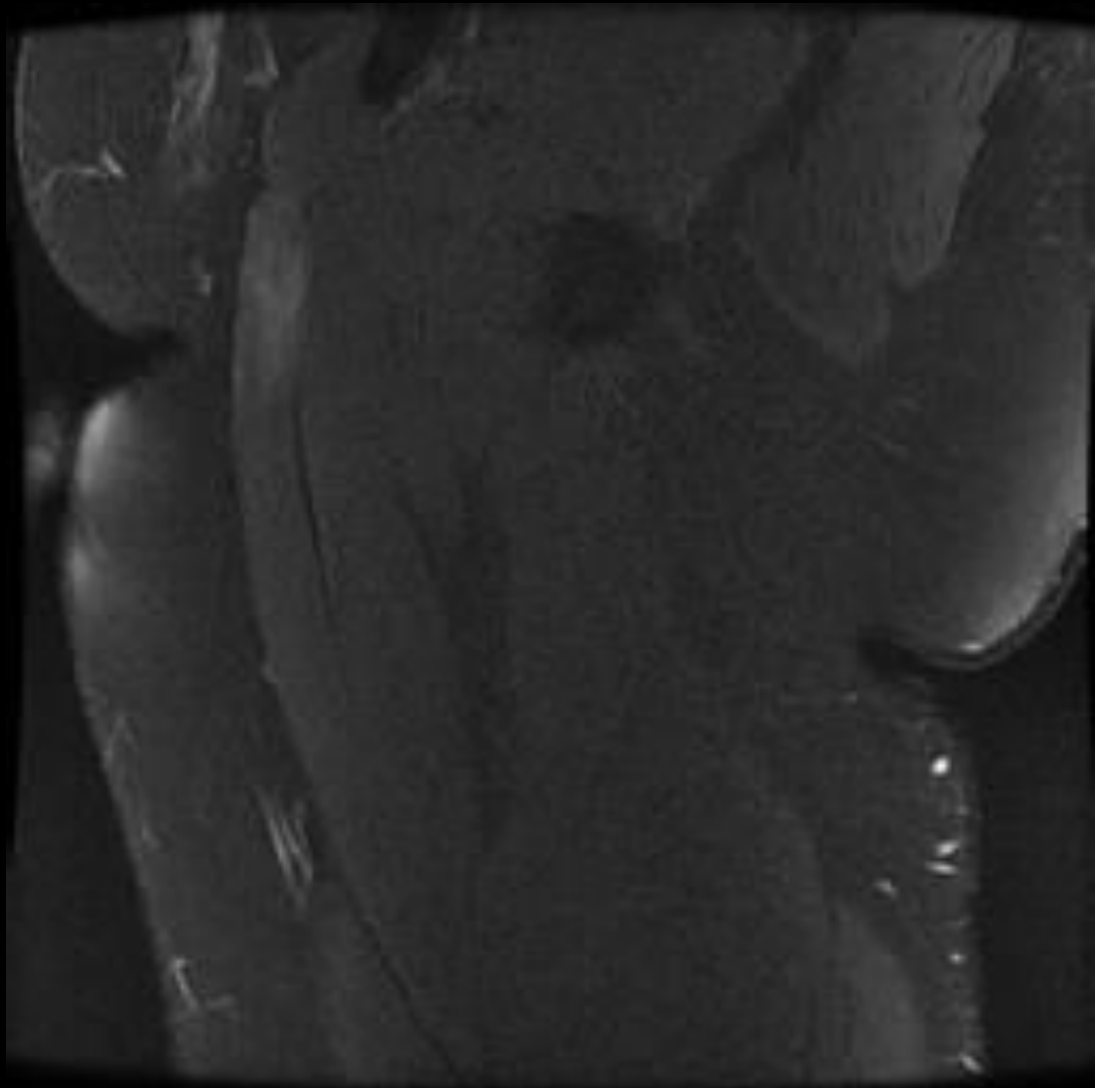
[medial to lateral]

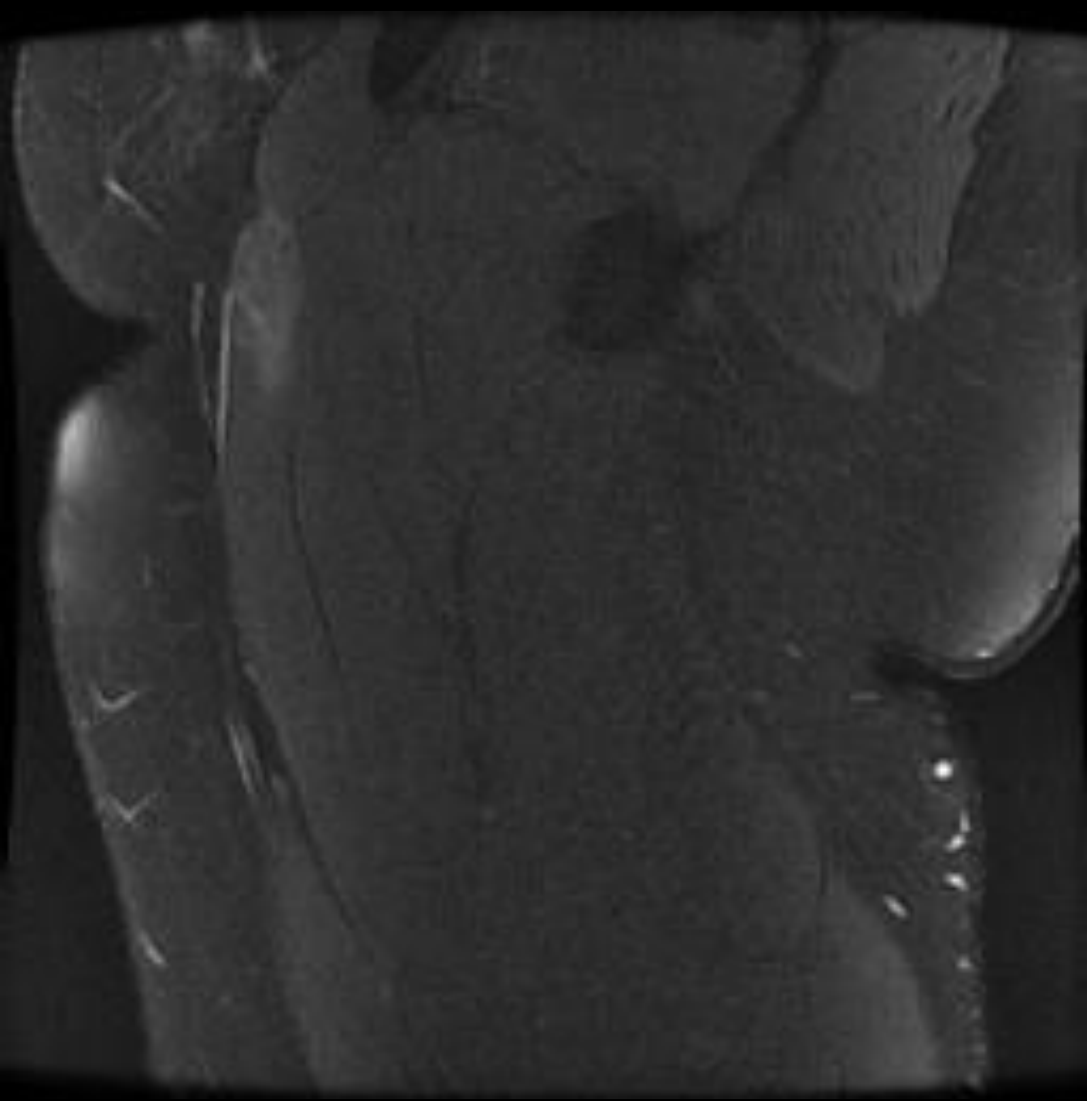












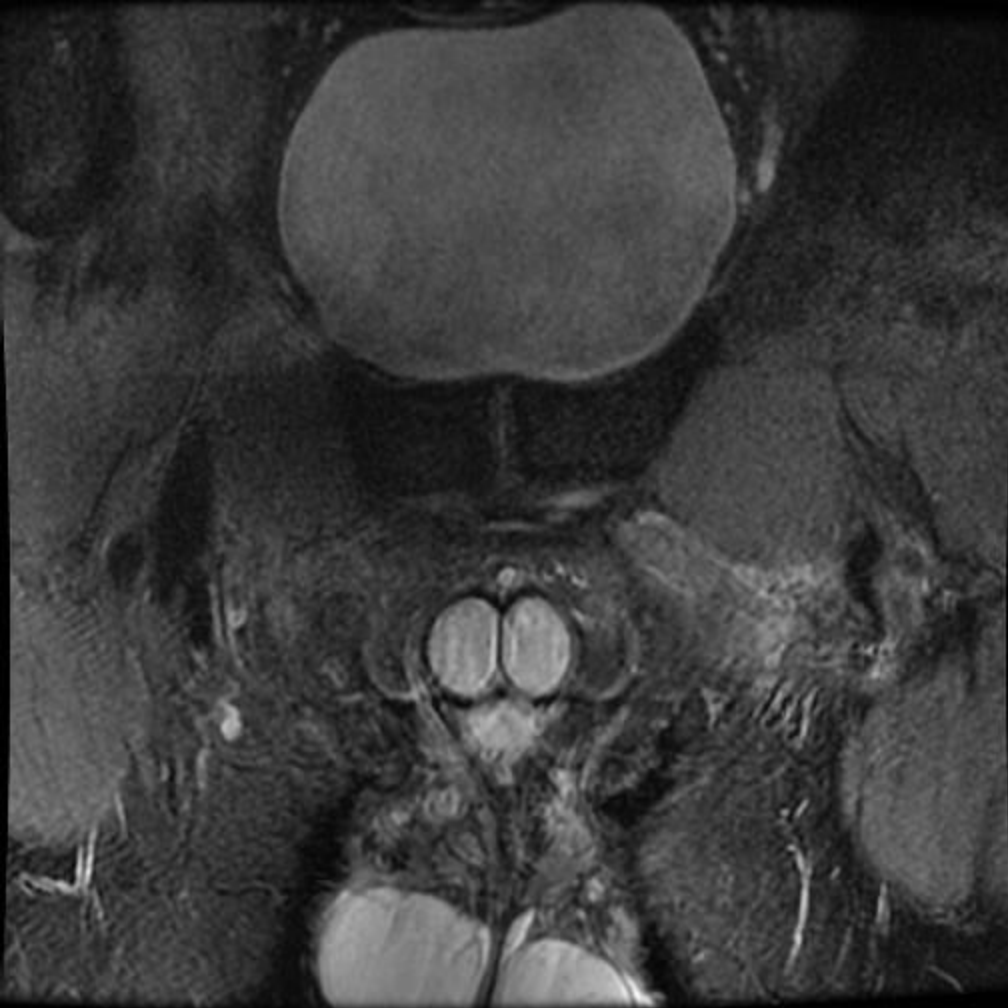
Partial Thickness Tear of the Adductor Tendon Origin at the Pubic Bone

[Athletic Pubalgia Spectrum/"Sports Hernia"]

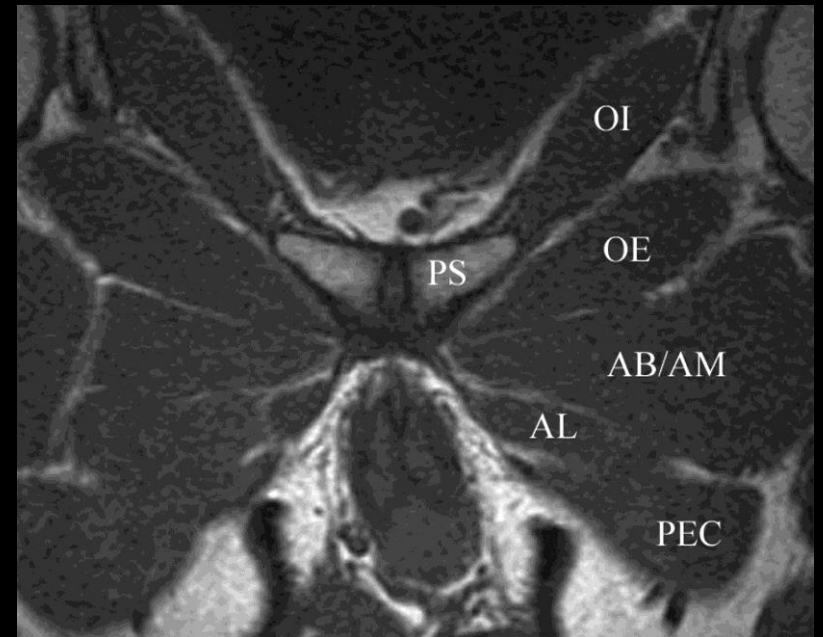
Athletic Pubalgia

- Dfn: *a group of MSK processes that occur in and around the pubis symphysis and share similar mechanisms of injury.*
- Vs. “Sports Hernia”/Groin pain in athlete (extensive DDX)
- Quick acceleration/change in direction/side-to-side motions
 - Goalie (hockey), soccer/rugby players
- Focused Evaluation:
 - Rectus abdominus pubic attachment and its fascia, the hip adductor tendon origins, and the symphysis pubis..

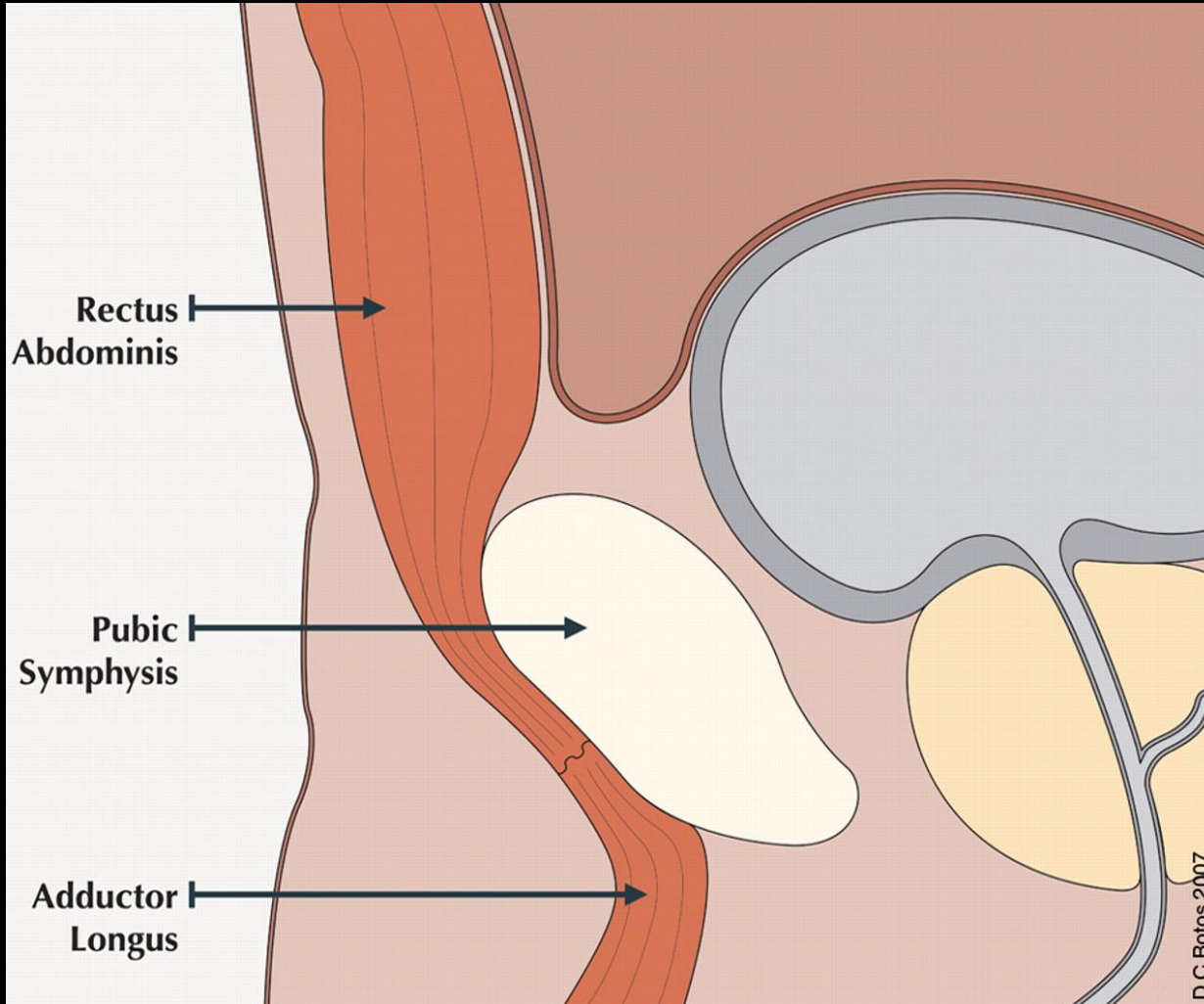
[CASE TWO]



Axial oblique MR image acquisitions and normal appearance of the pubic region.

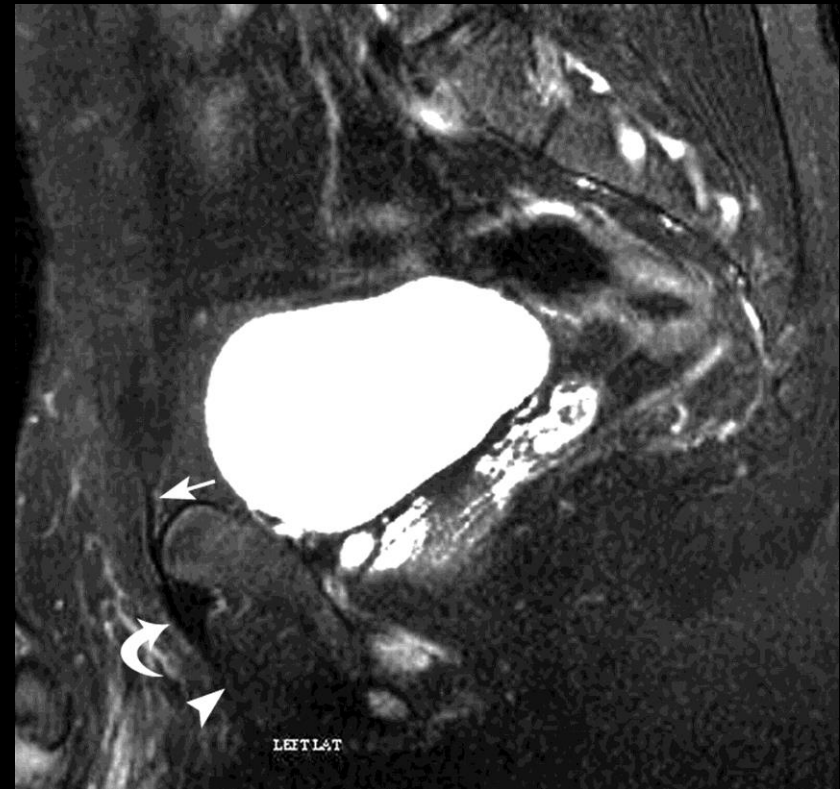


Sagittal schematic of the pubic symphysis show the common aponeurosis of the rectus abdominis and adductor longus muscles, immediately anterior to the midline of the pubic body.



[CASE TWO]

Normal MR imaging appearance of the rectus abdominis–adductor longus aponeurosis.



Omar I M et al. Radiographics 2008;28:1415-1438

Fibers of the Rectus abdominus and adductor longus origins blend together to form a common aponeurosis which attaches to the periosteum of the anterior aspect of the pubic body

UCSD Protocol Viewer:

“Athletic Pubalgia Protocol”

-large FOV pelvis and high resolution/small FOV of symphysis pubis

*axial oblique (long axis of adductor tendon origins)

References:

- [Athletic pubalgia and "sports hernia": optimal MR imaging technique and findings.](#) Omar IM, Zoga AC, Kavanagh EC, Koulouris G, Bergin D, Gopez AG, Morrison WB, Meyers WC. Radiographics. 2008 Sep-Oct;28(5)
- [Athletic pubalgia and the "sports hernia": MR imaging findings.](#) Zoga AC, Kavanagh EC, Omar IM, Morrison WB, Koulouris G, Lopez H, Chaabra A, Domesek J, Meyers WC. Radiology. 2008 Jun;247(3):797-807
- [Secondary cleft sign as a marker of injury in athletes with groin pain: MR image appearance and interpretation.](#) Brennan D, O'Connell MJ, Ryan M, Cunningham P, Taylor D, Cronin C, O'Neill P, Eustace S. Radiology. 2005 Apr;235(1):162-7. Epub 2005 Feb 24.