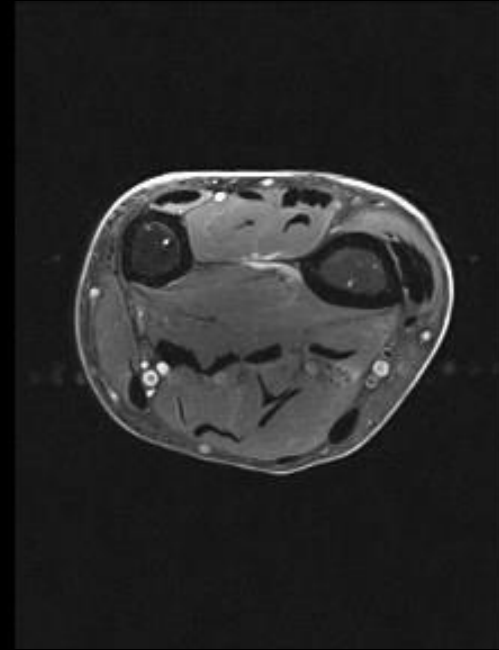
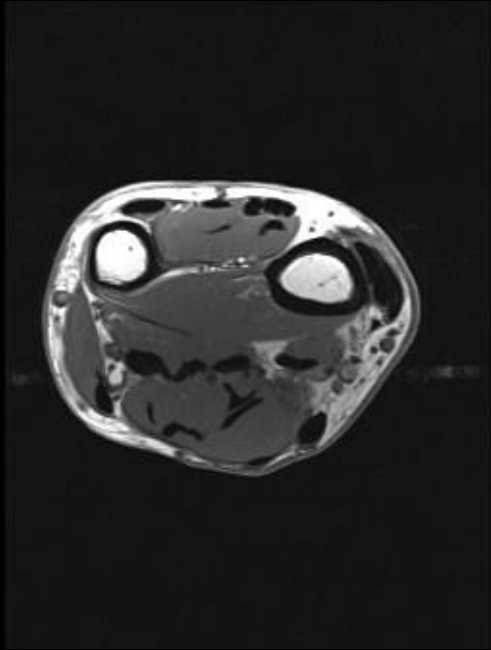
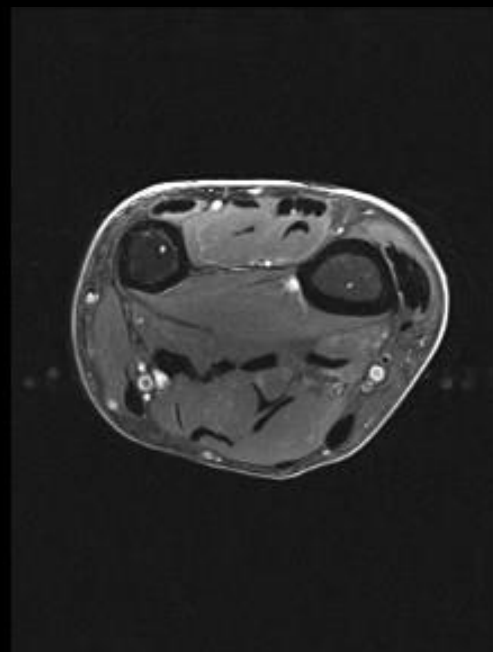
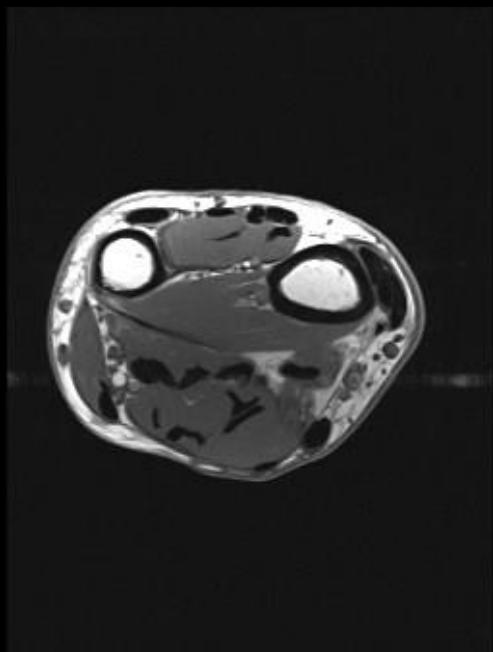
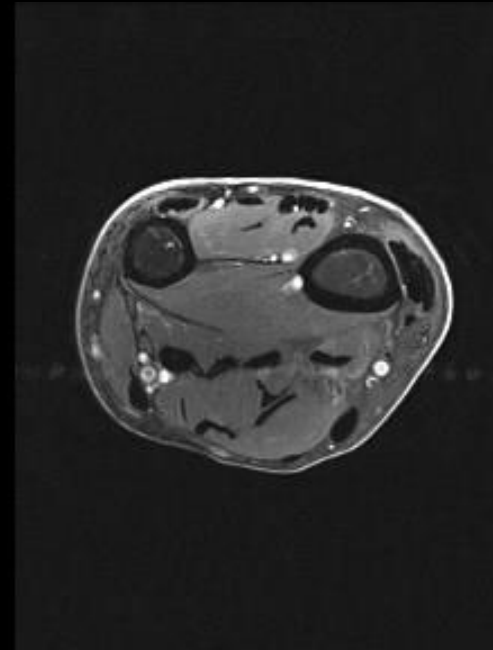
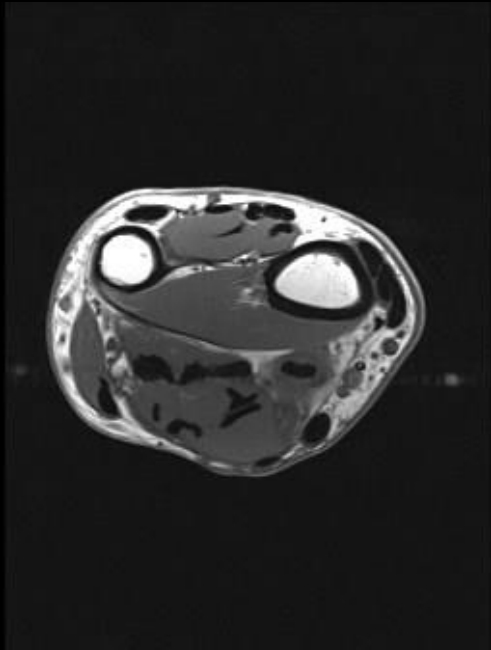


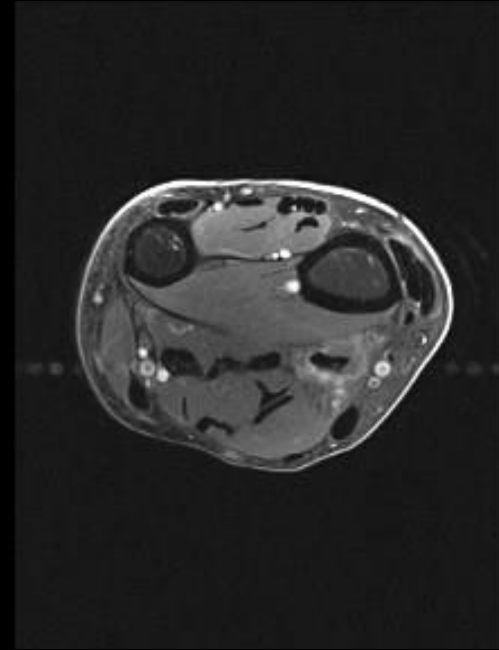
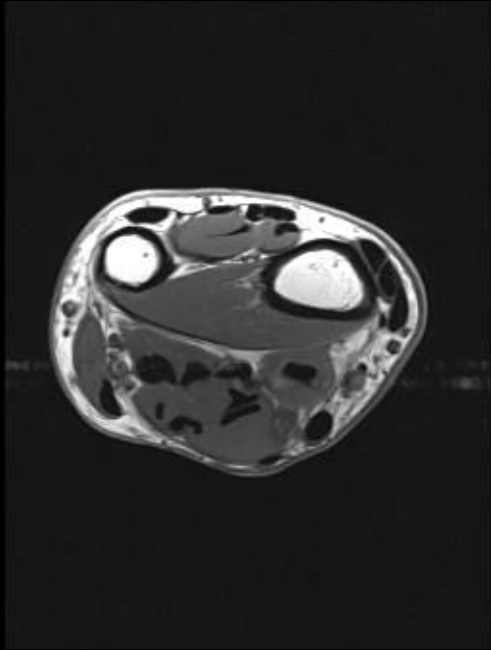
- 60M
- History provided: Evaluate for wrist mass
- H&P: Works with hand tools. Works out avidly.

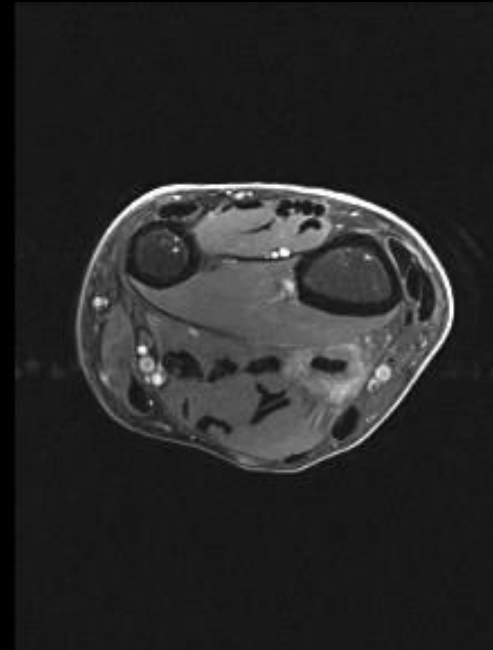
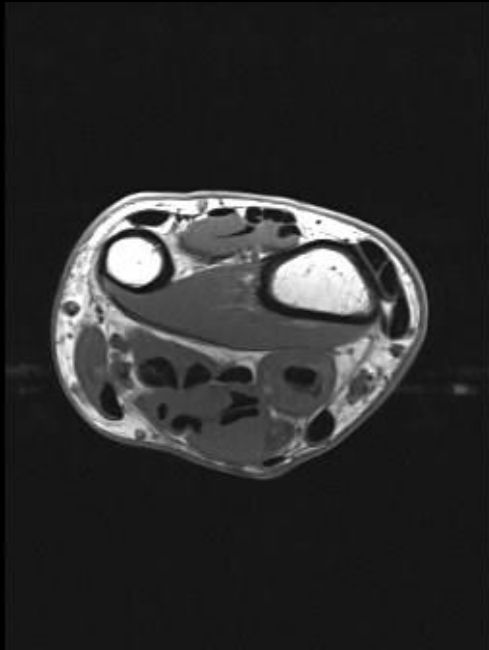


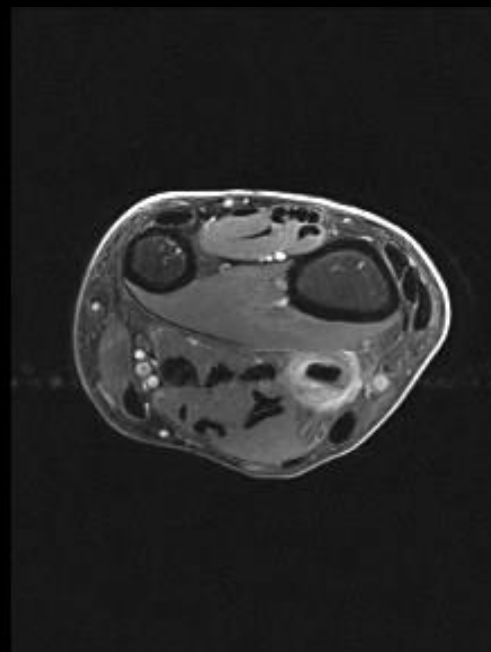
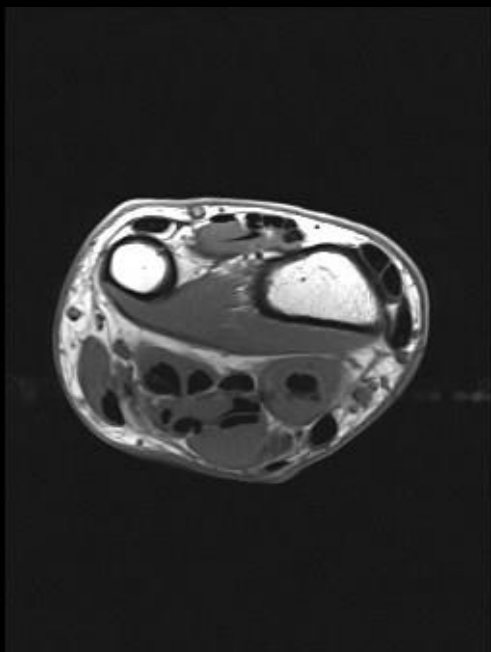


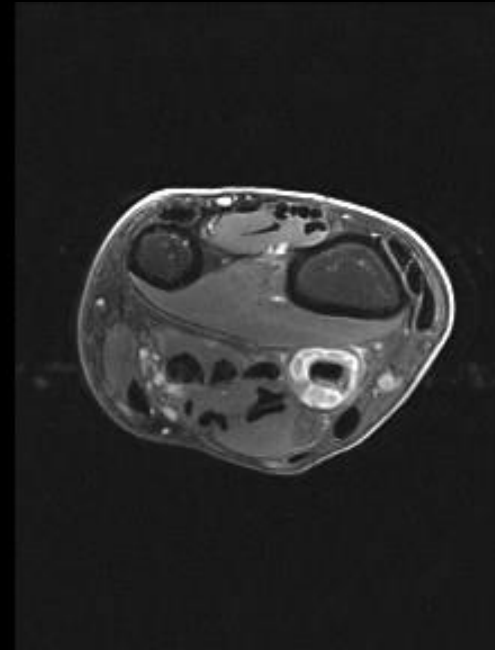
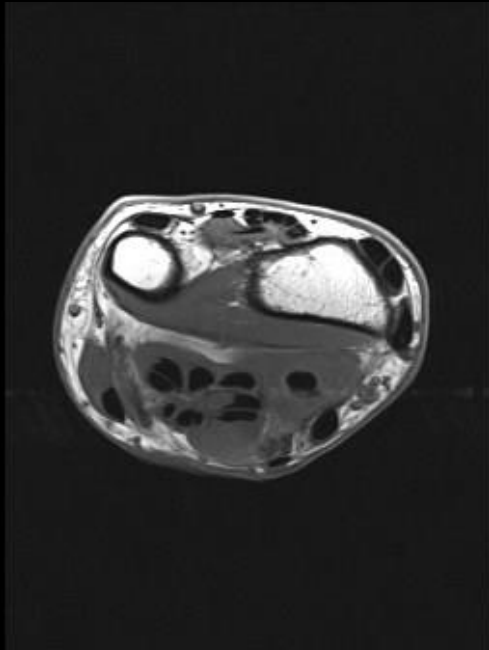


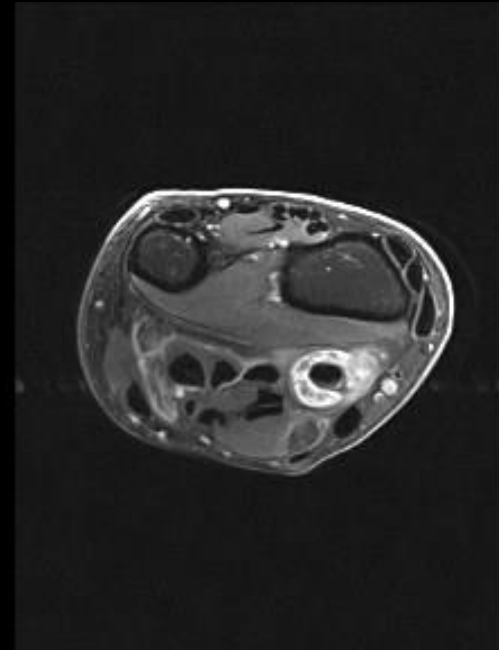
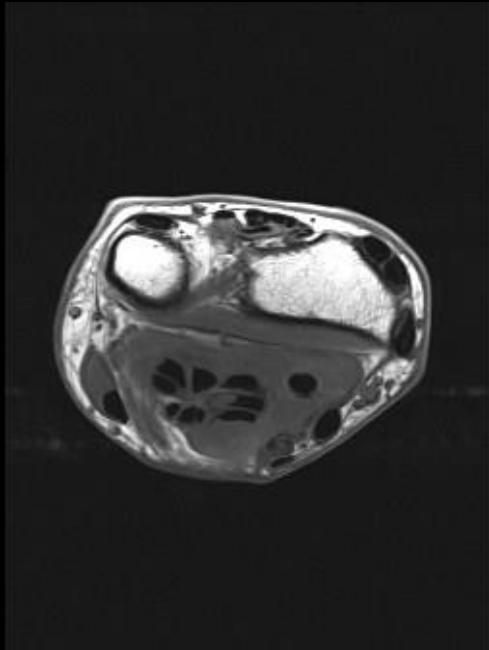


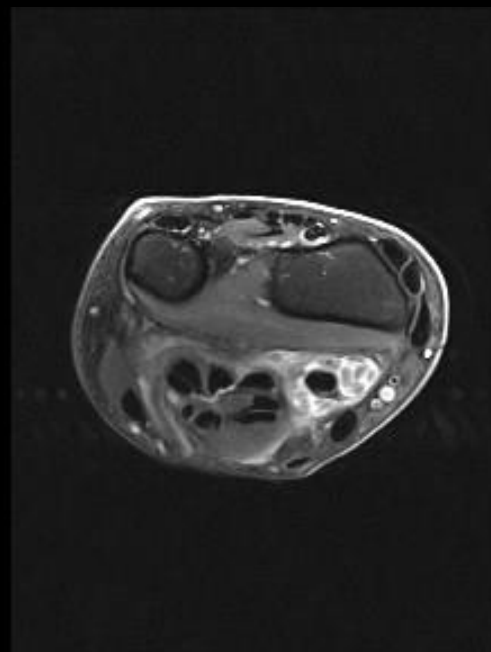
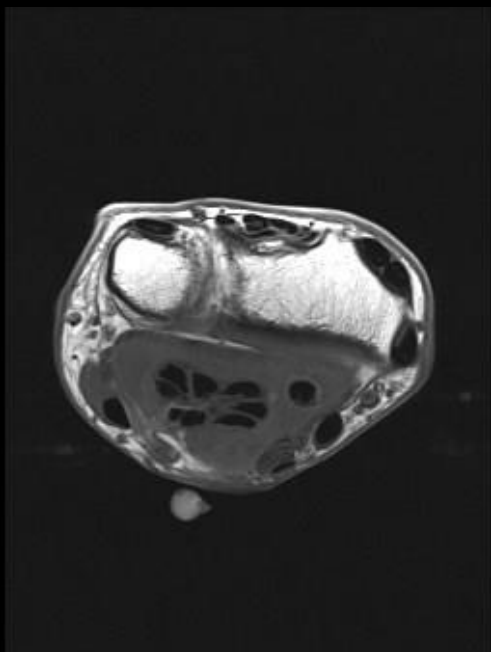


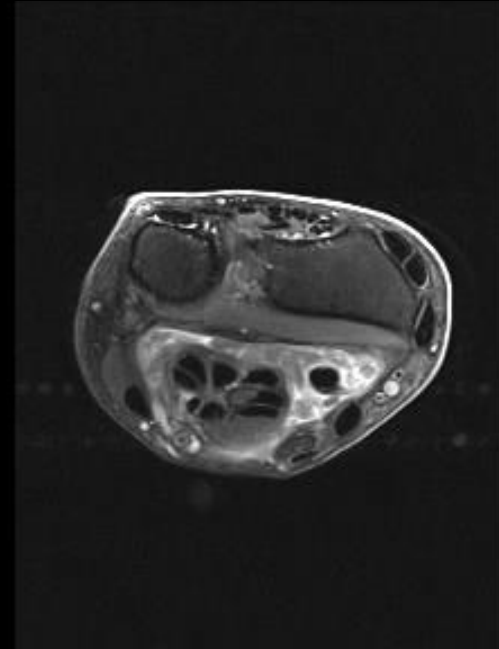
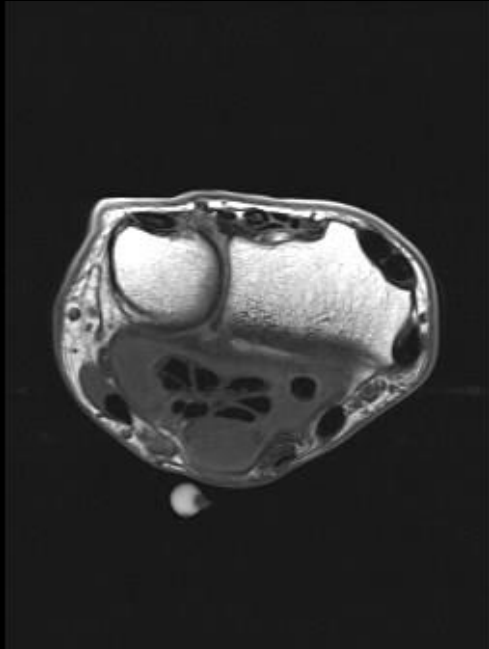


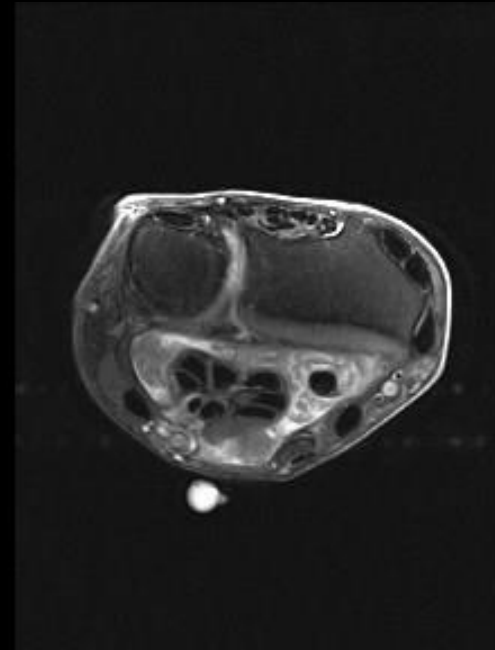
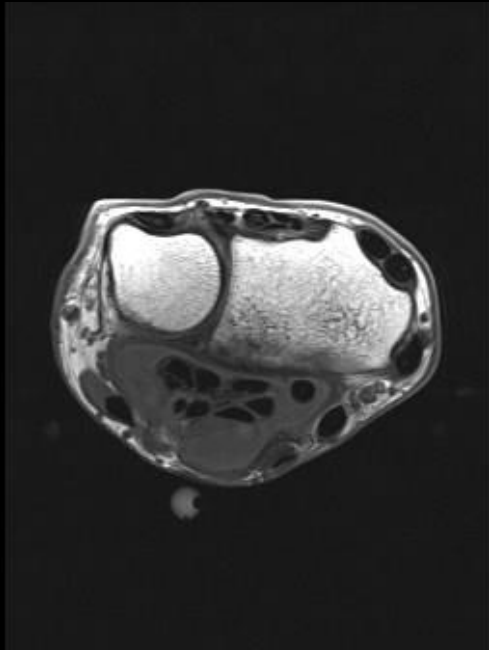


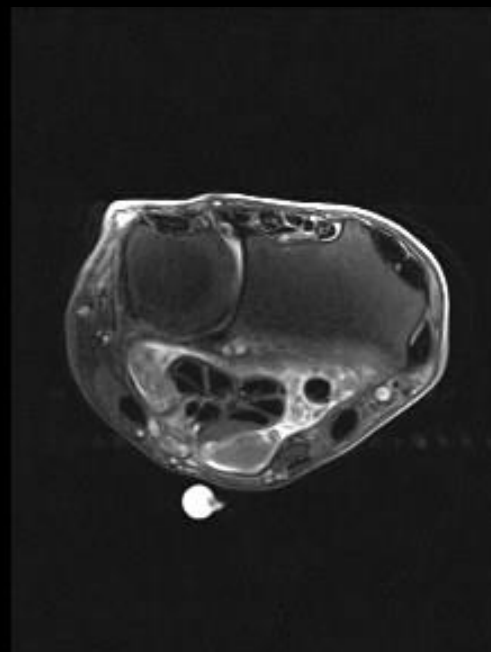
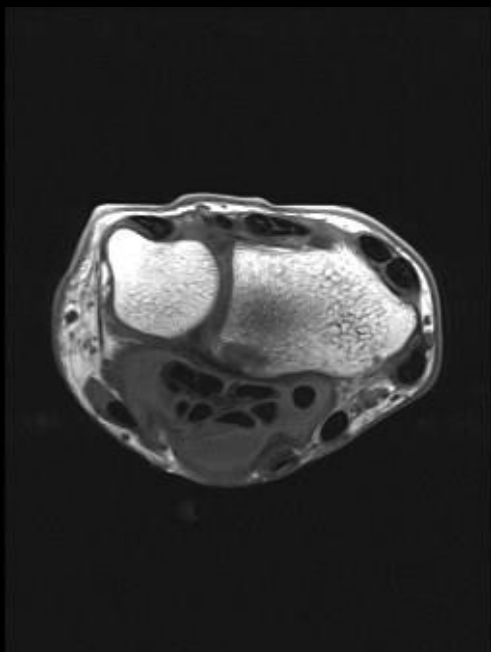


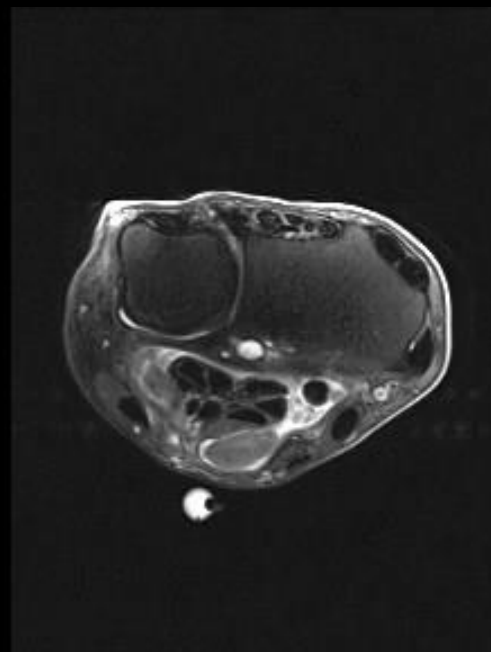
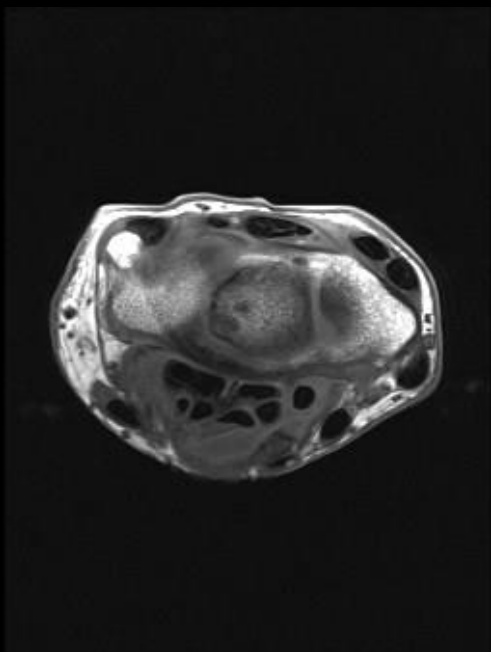


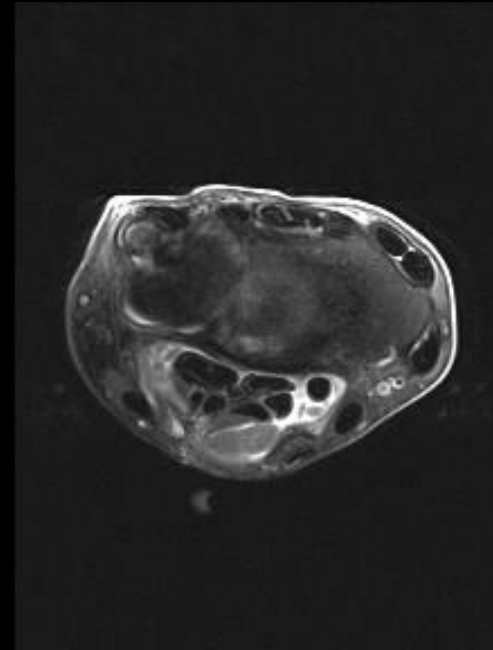
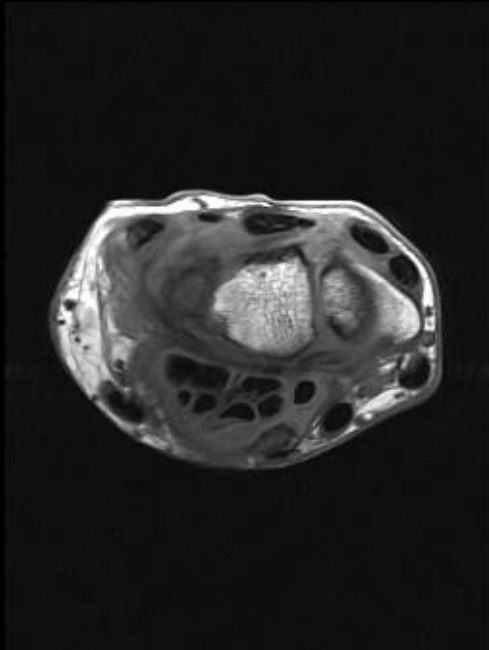


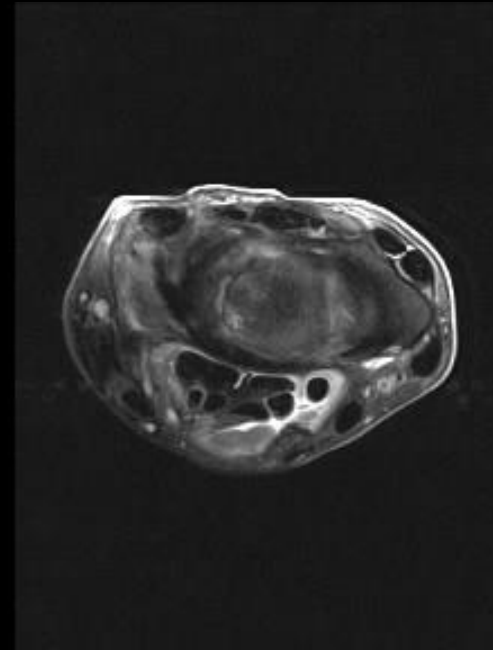
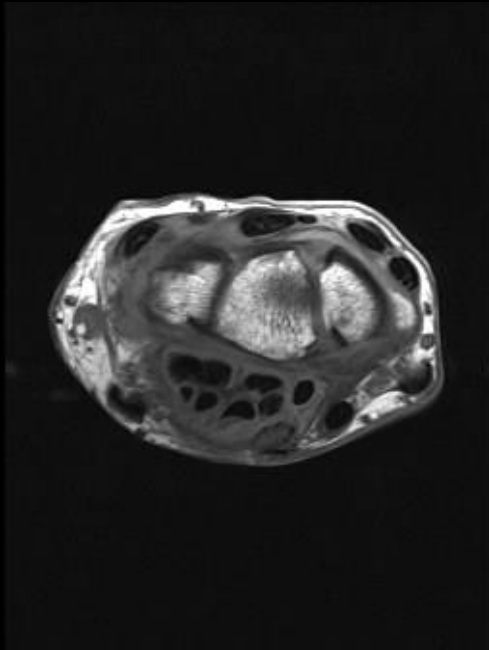


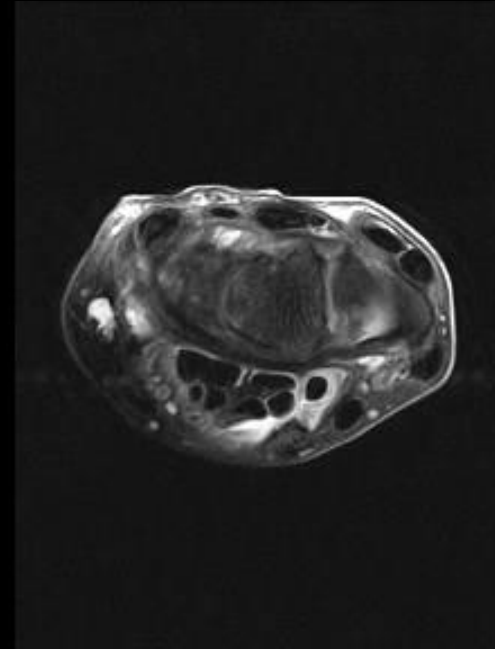
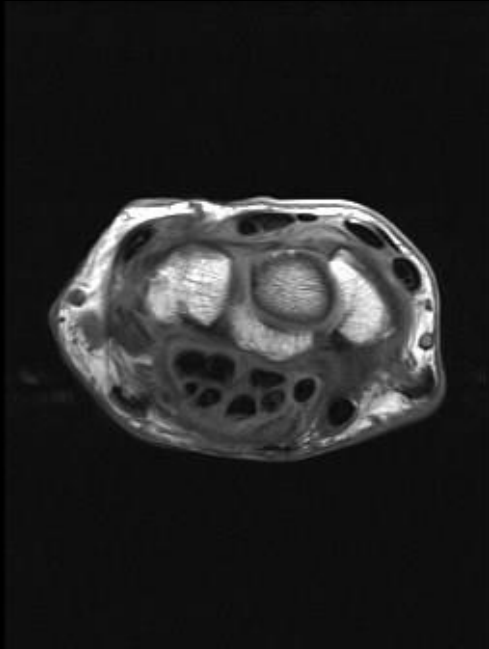


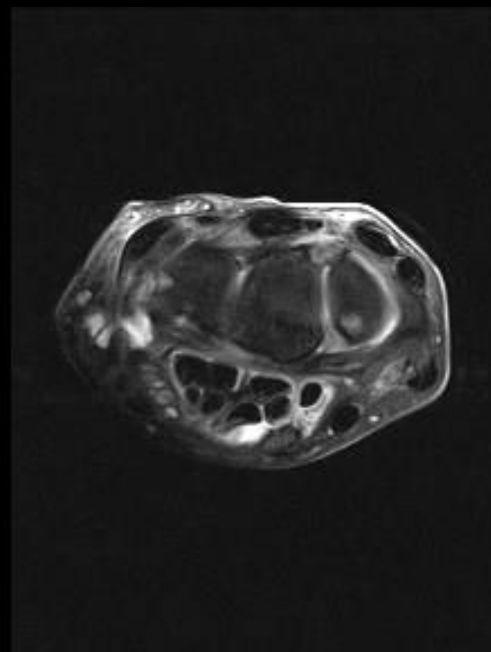
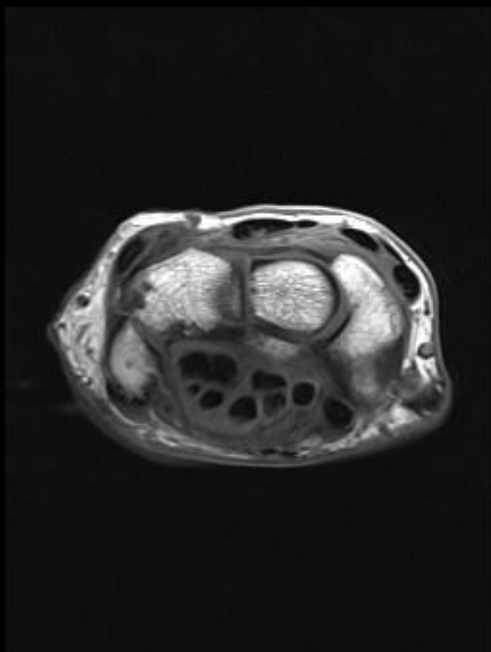


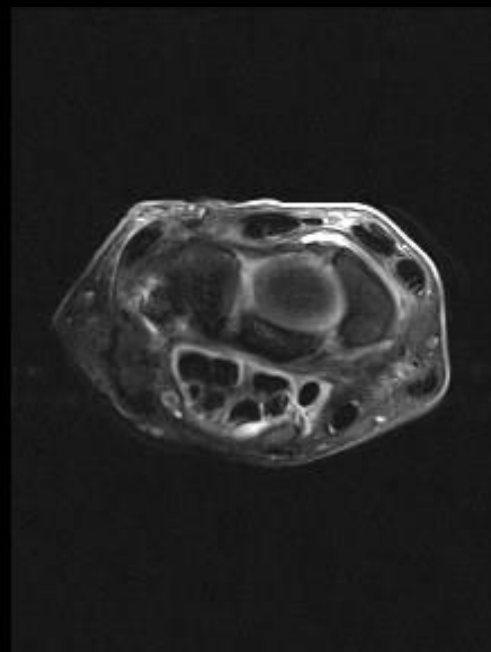


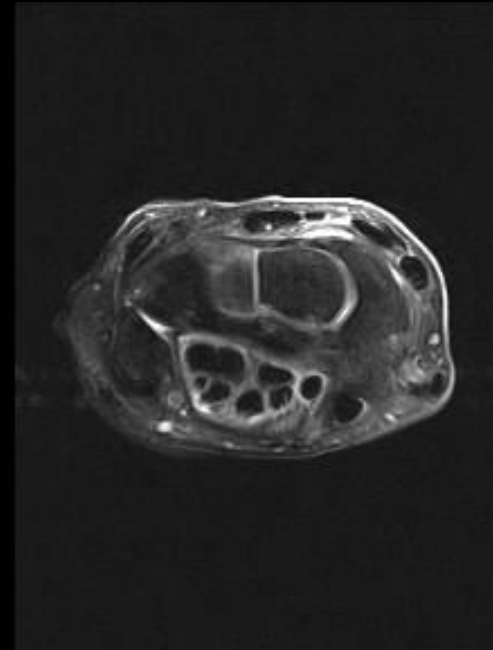
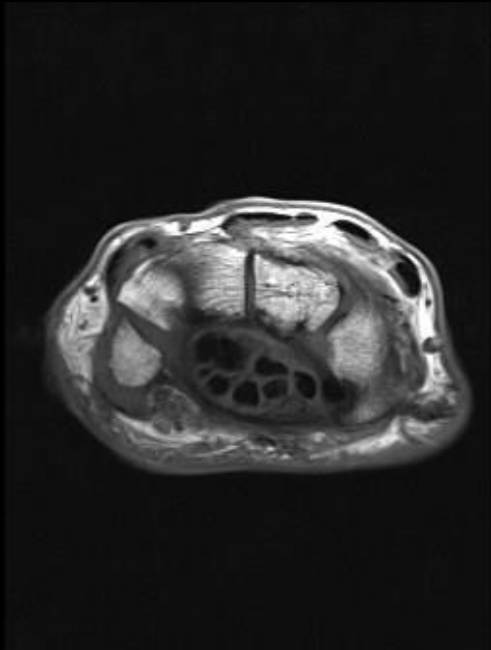


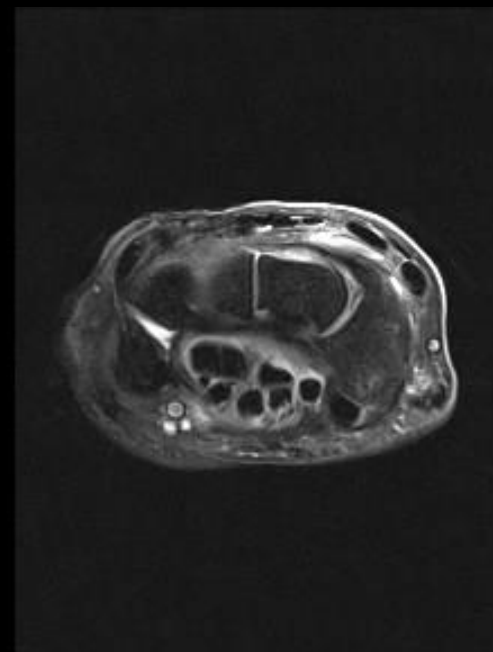
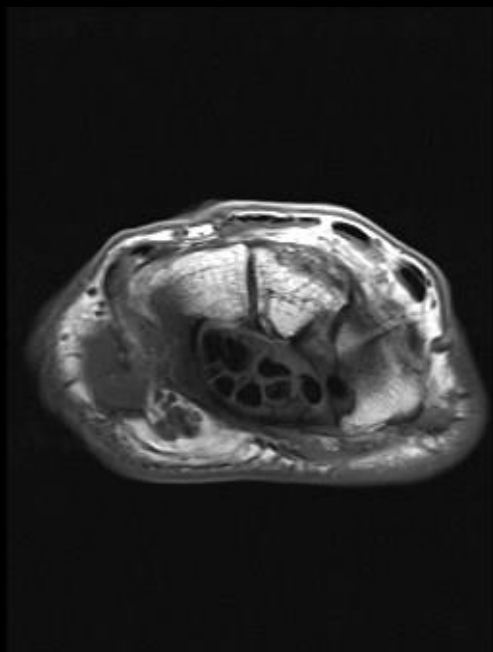


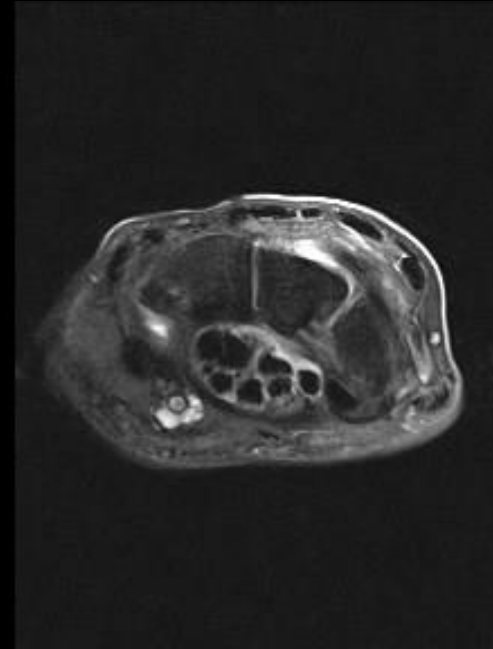
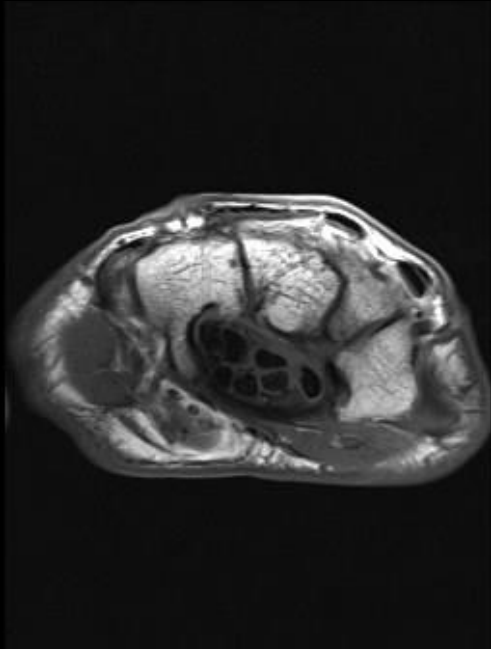


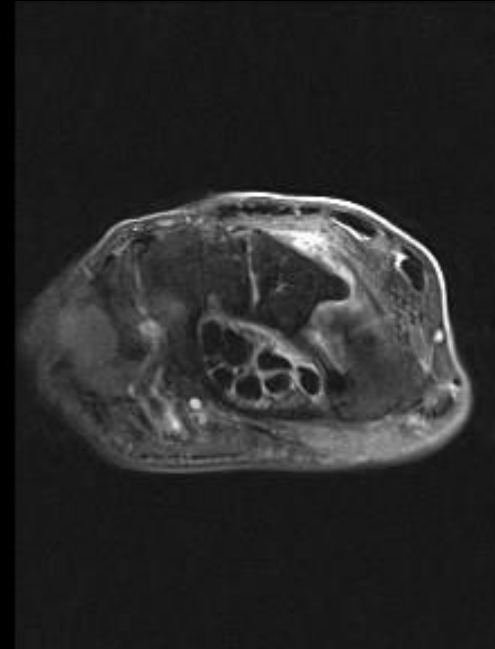
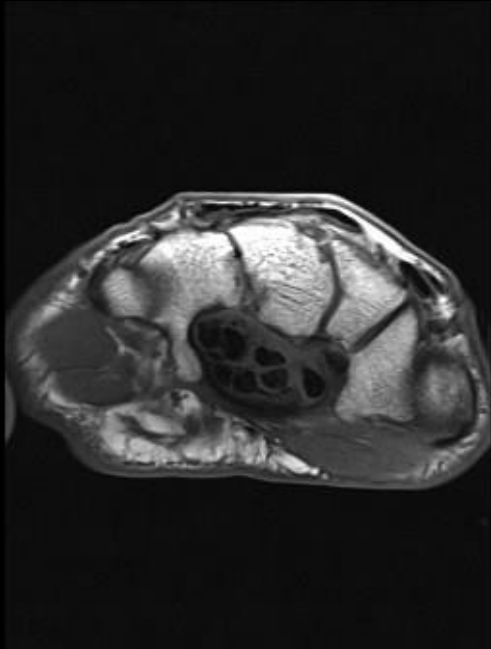


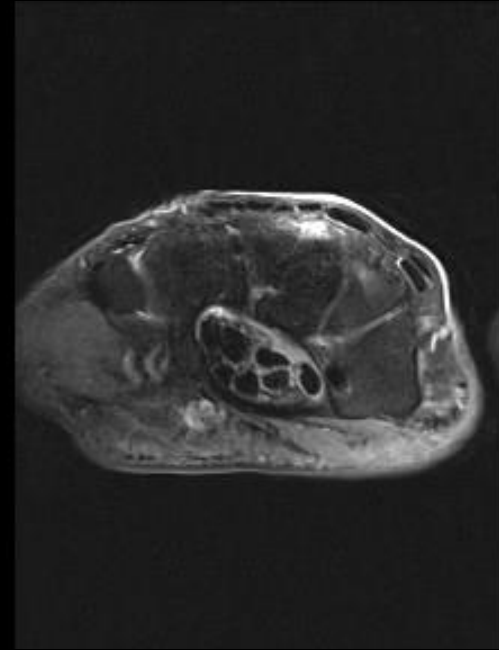
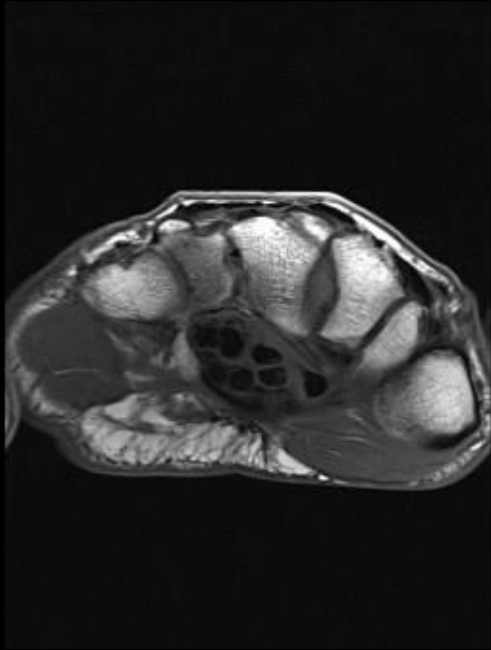


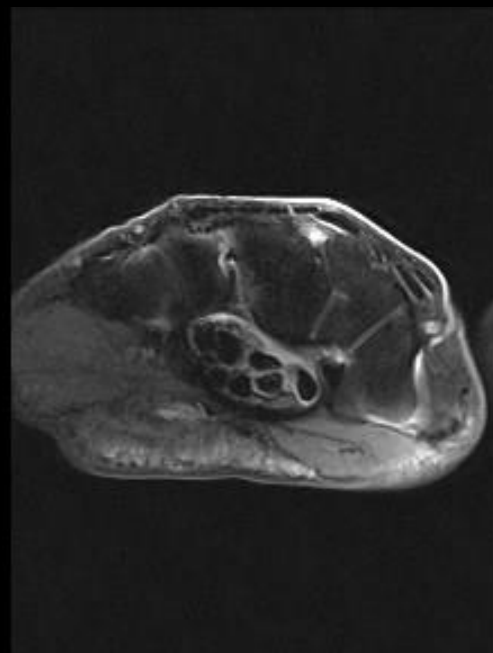
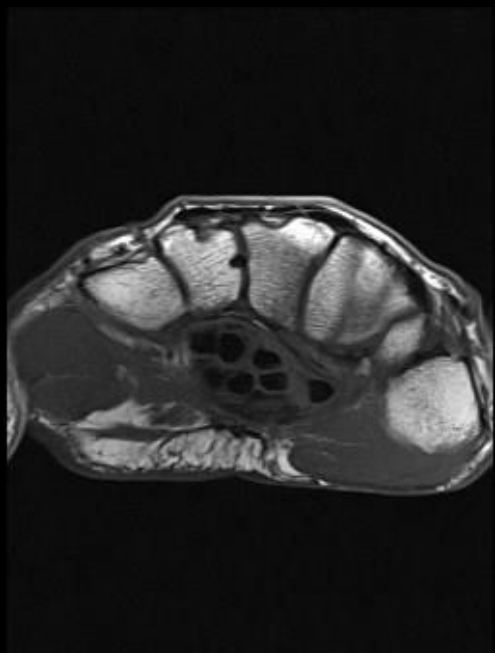


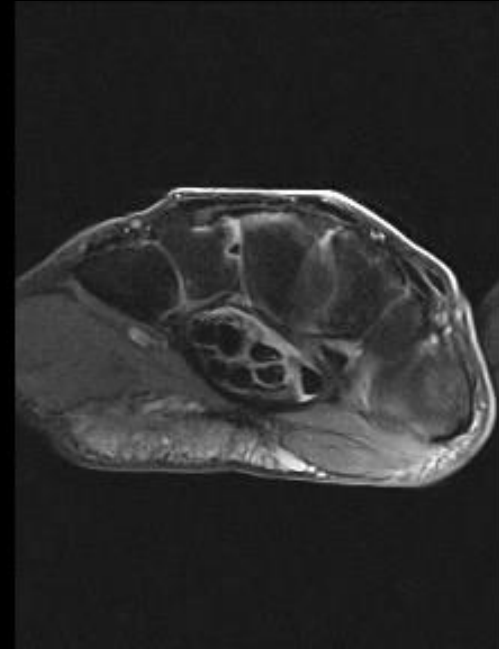
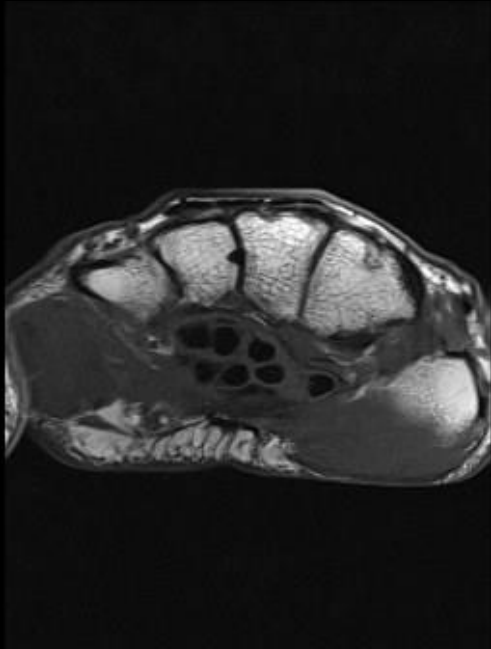


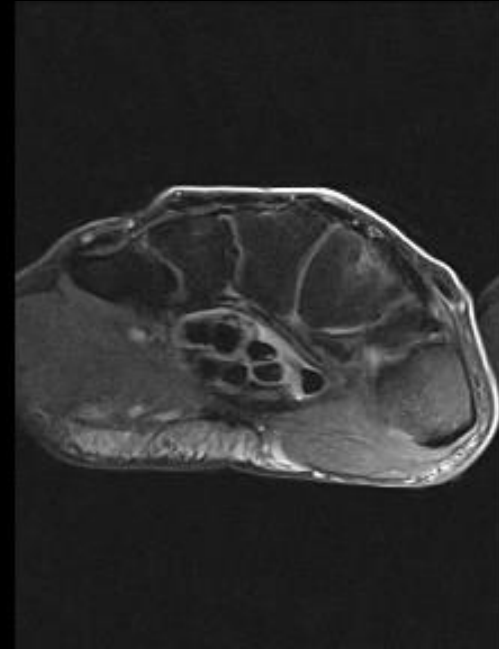
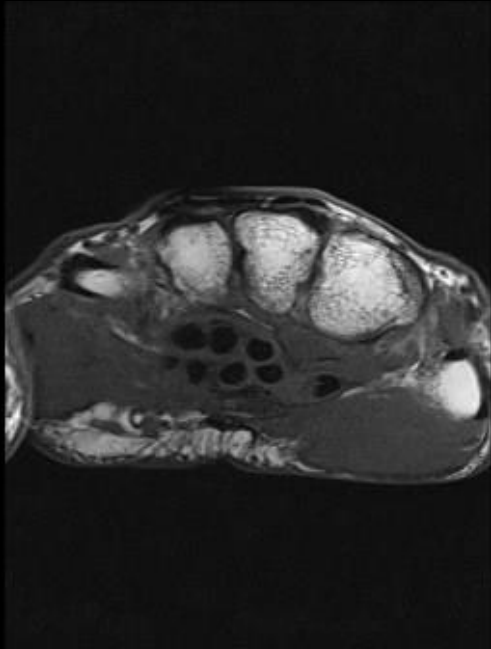












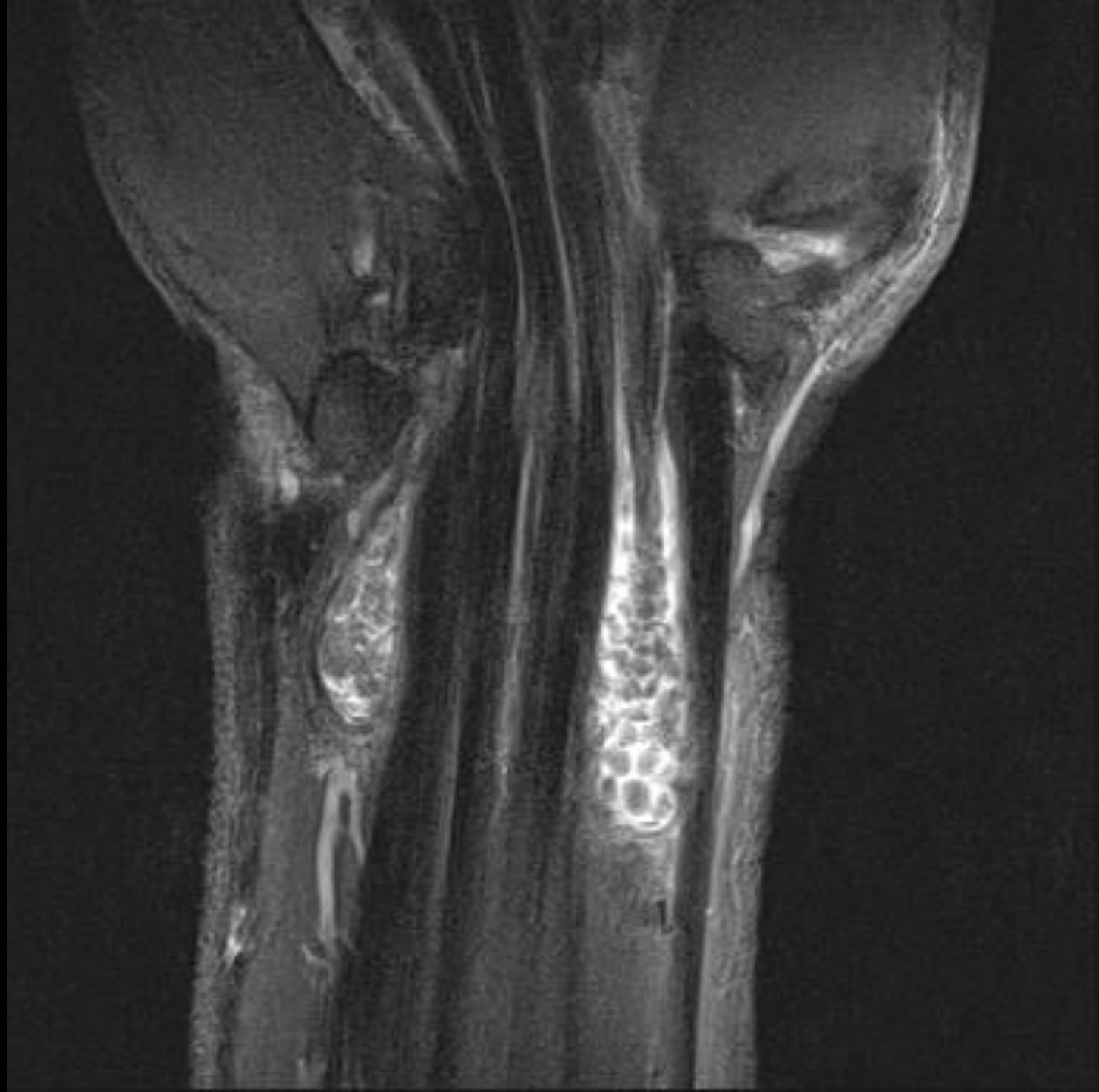


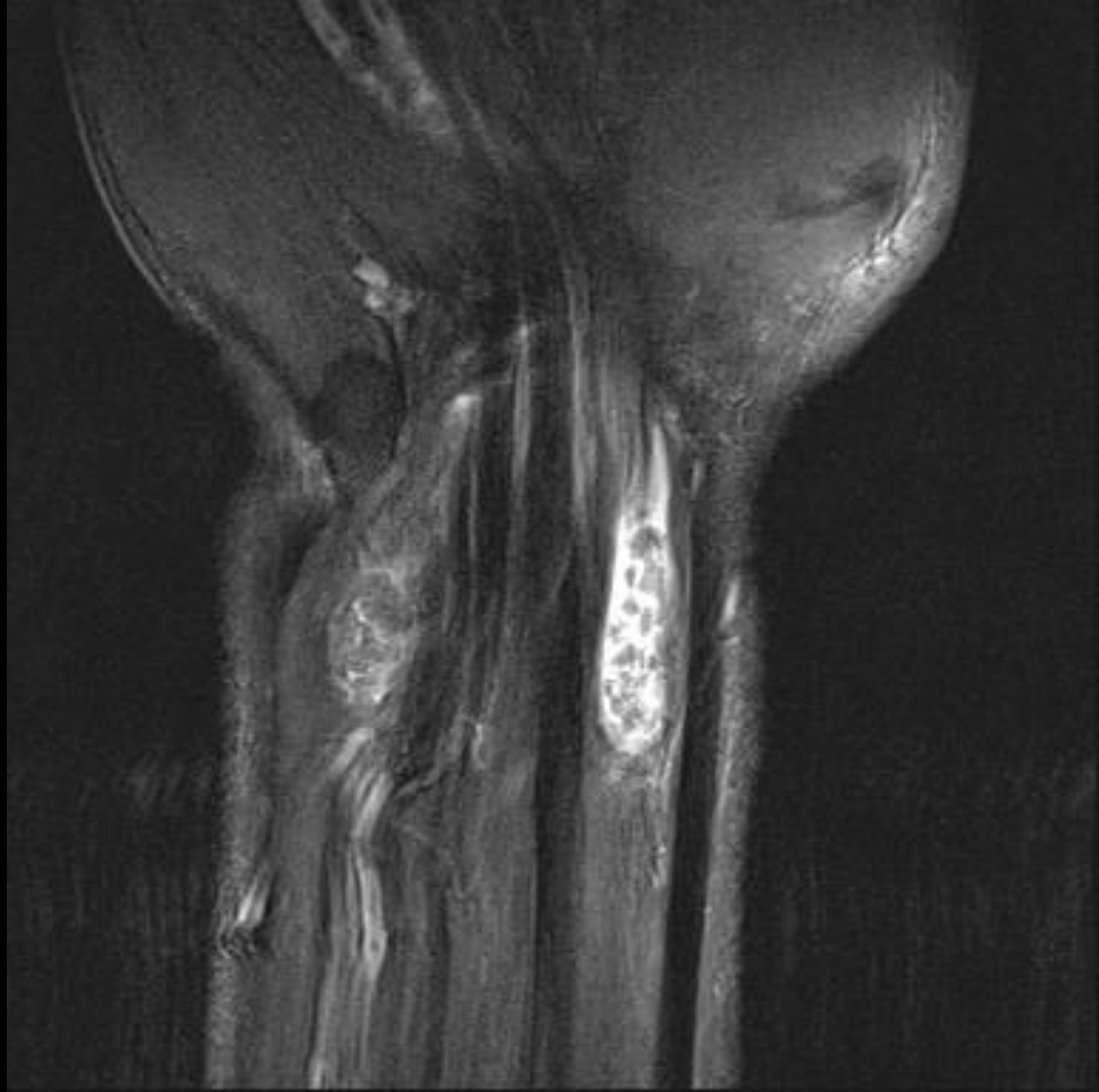




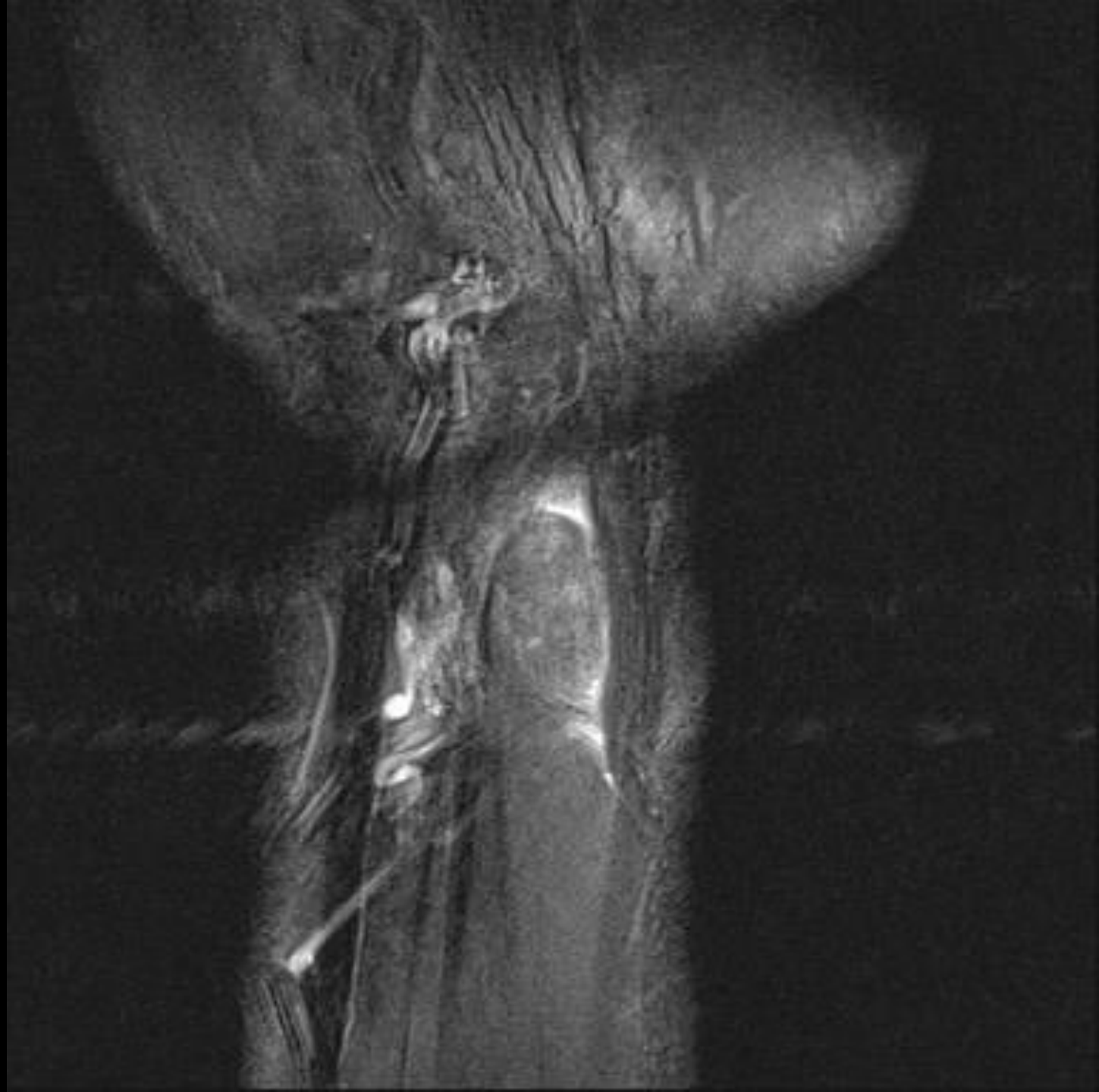


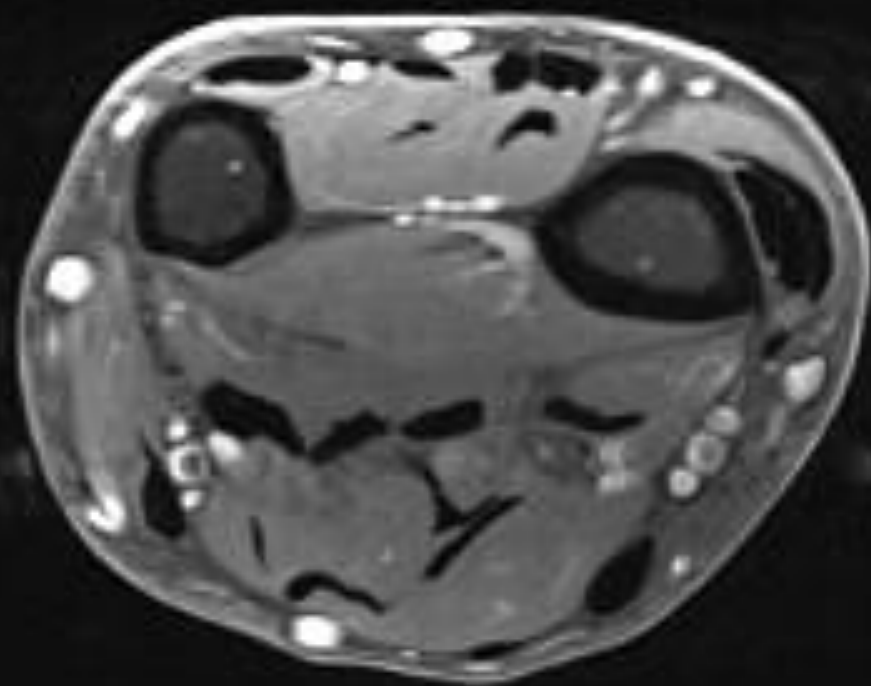


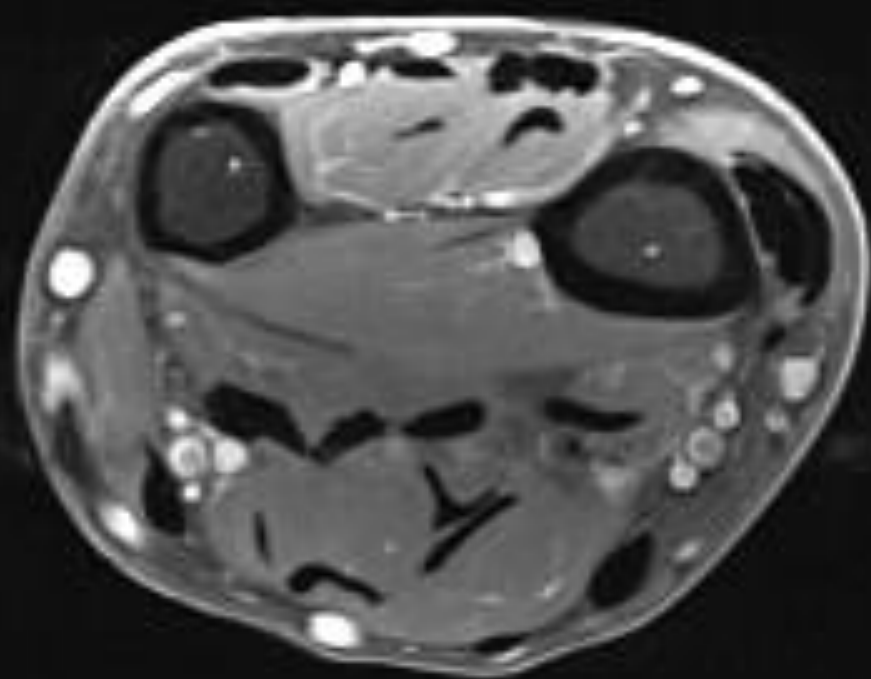


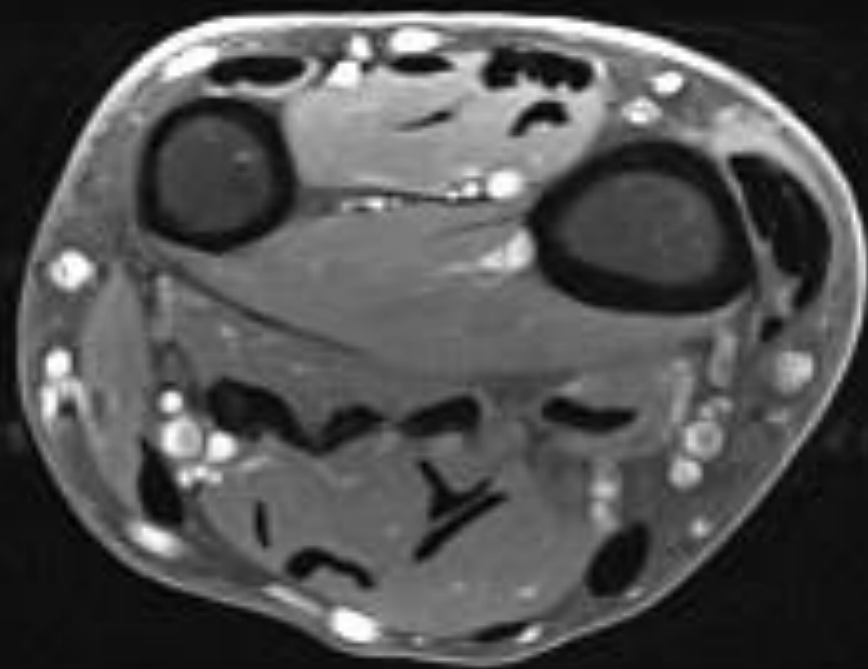


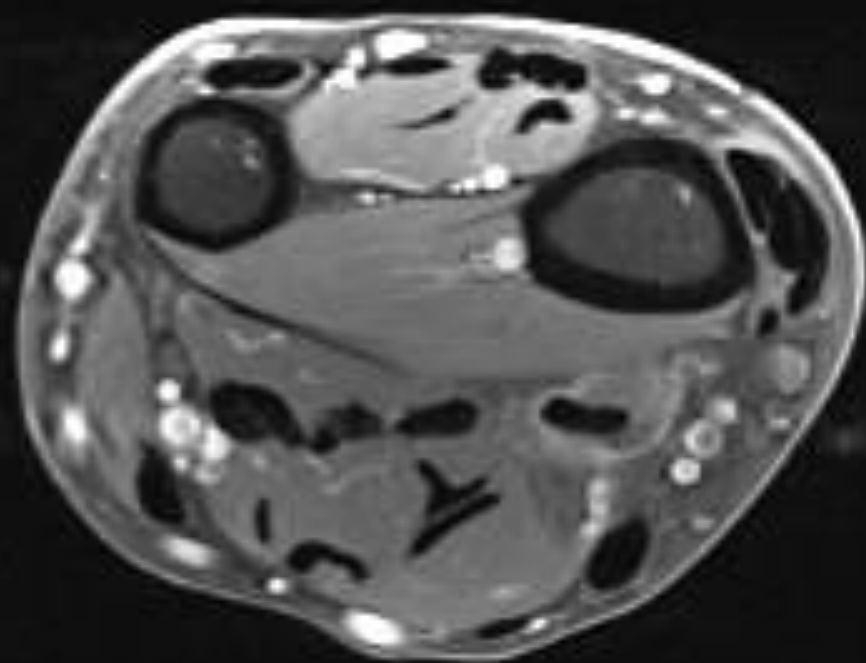


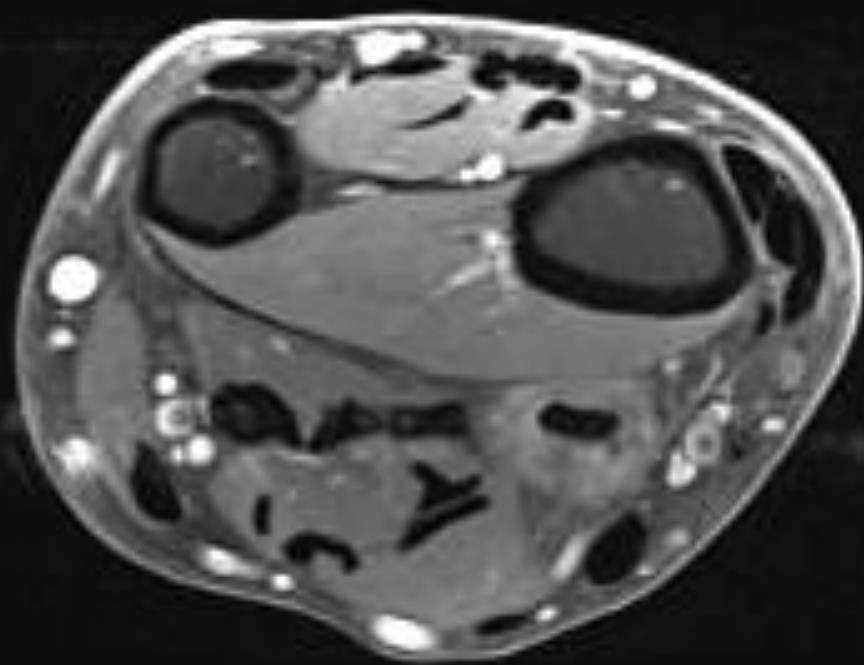


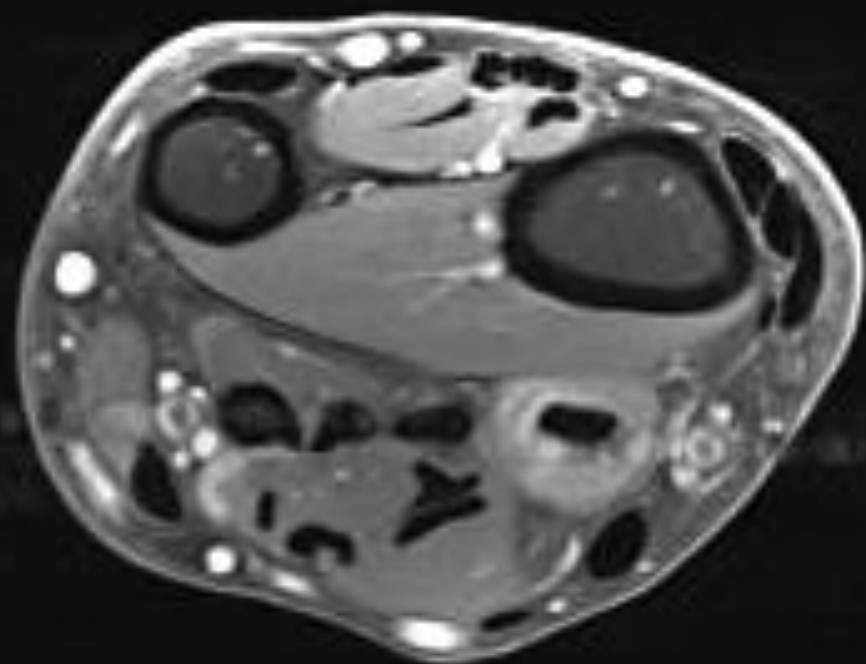


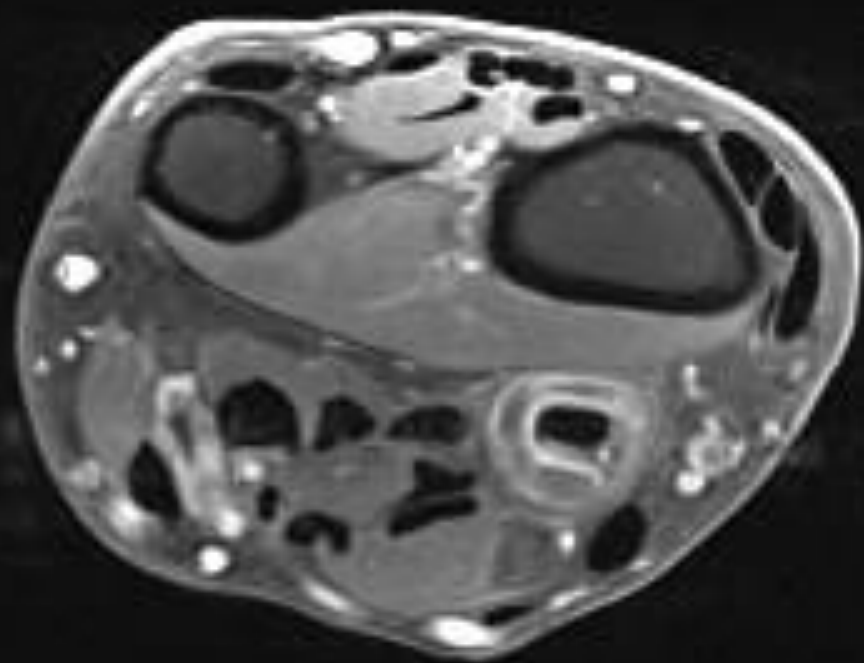


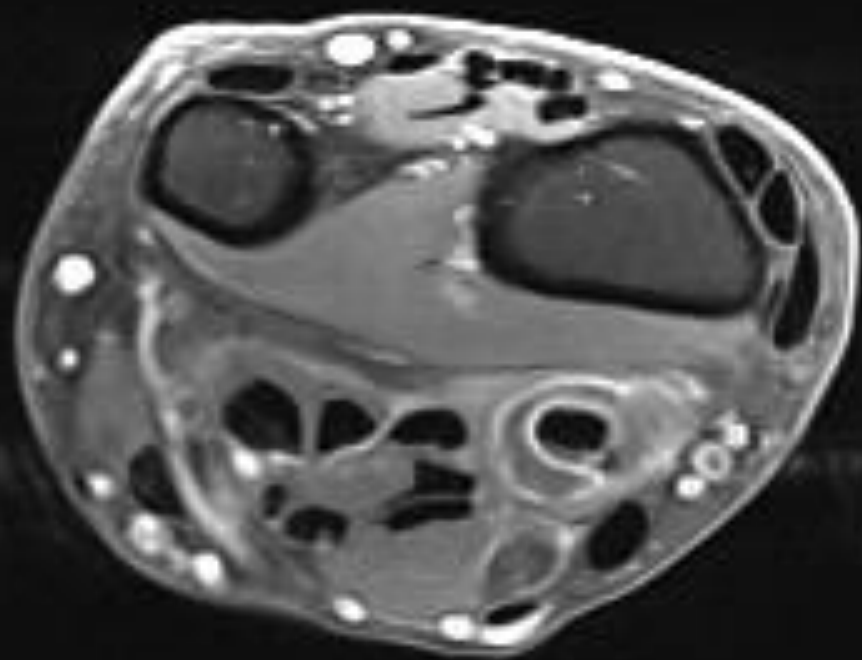


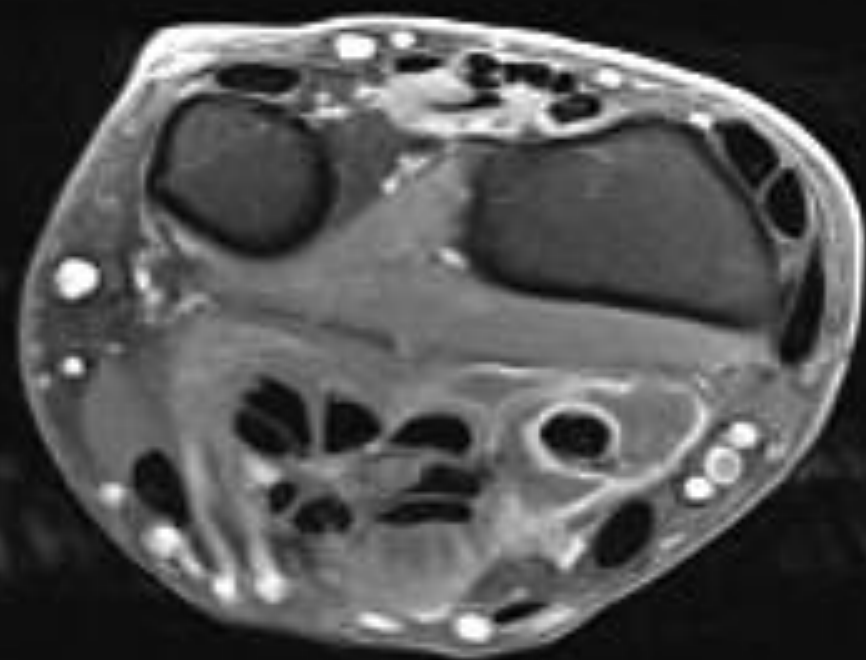


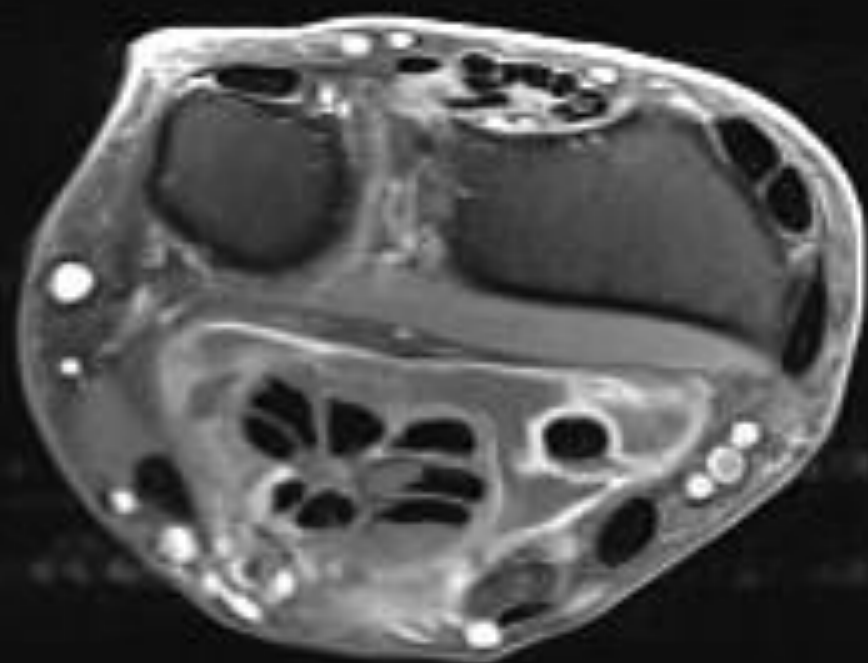


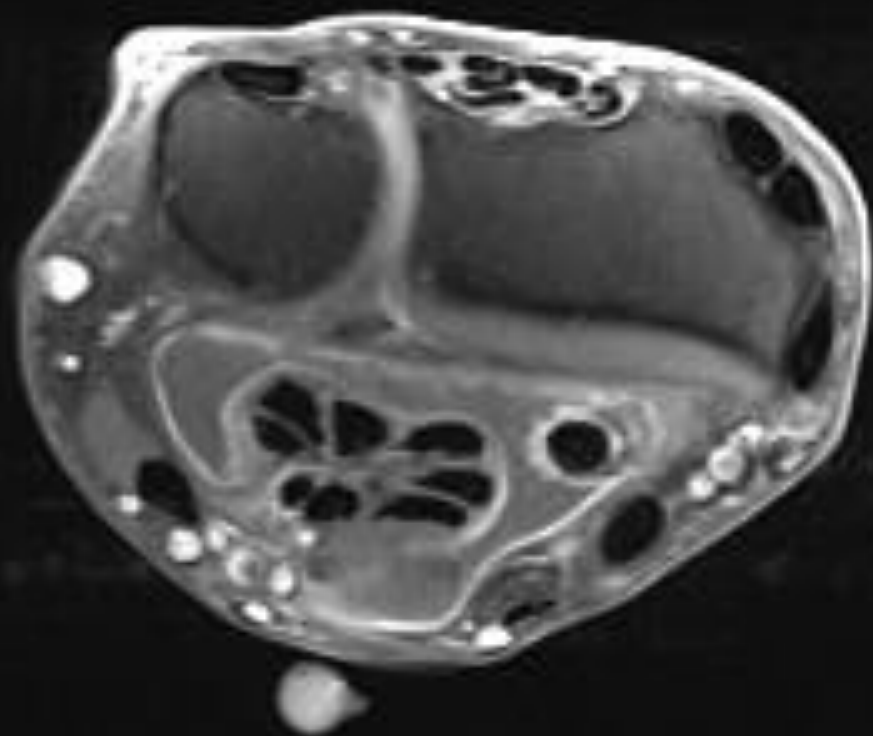


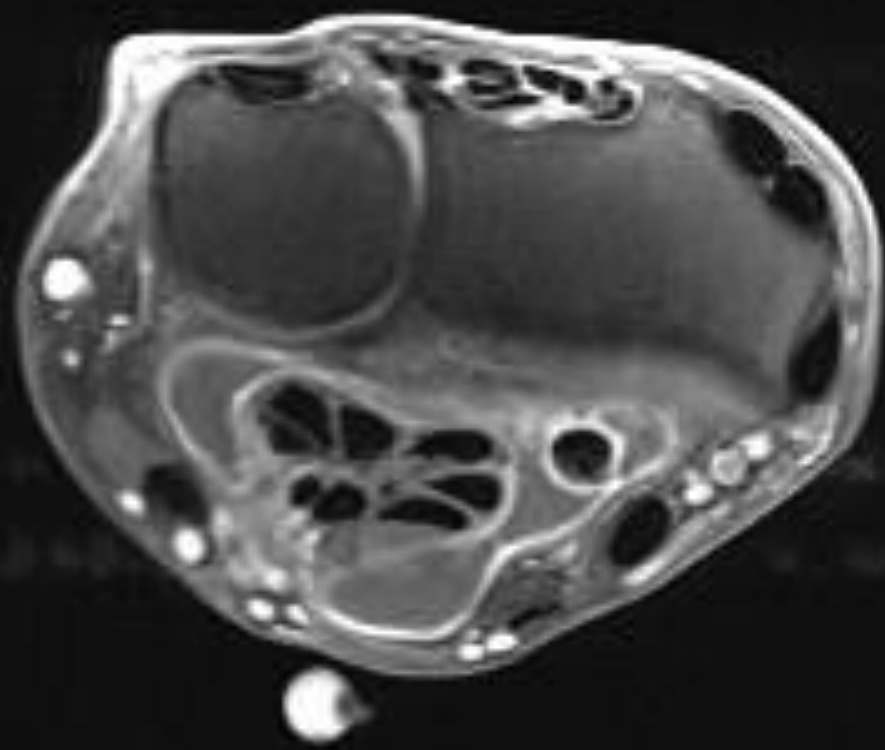


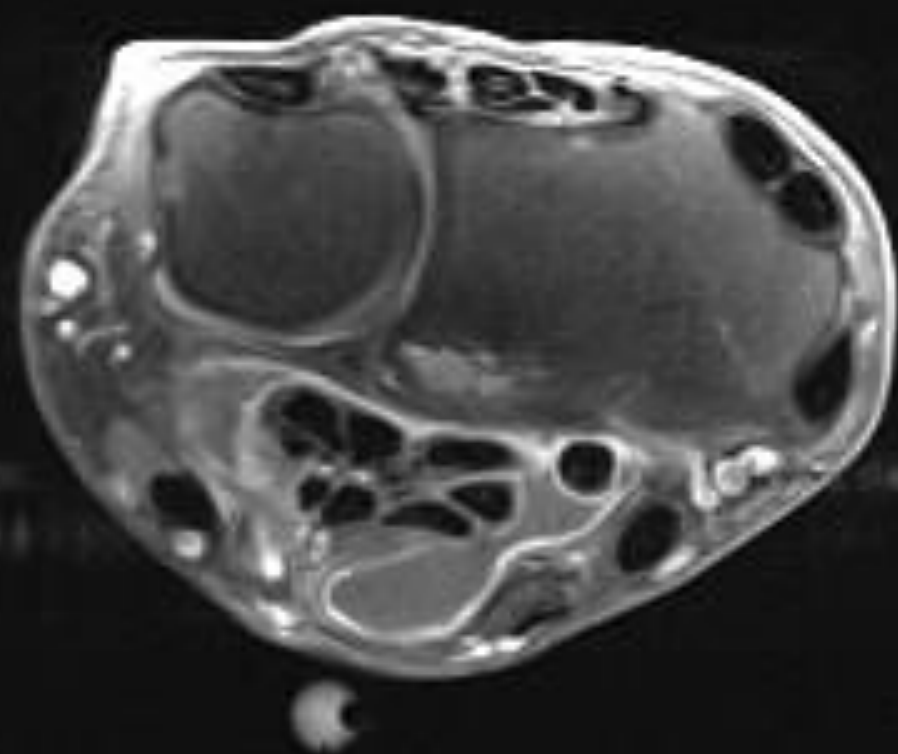


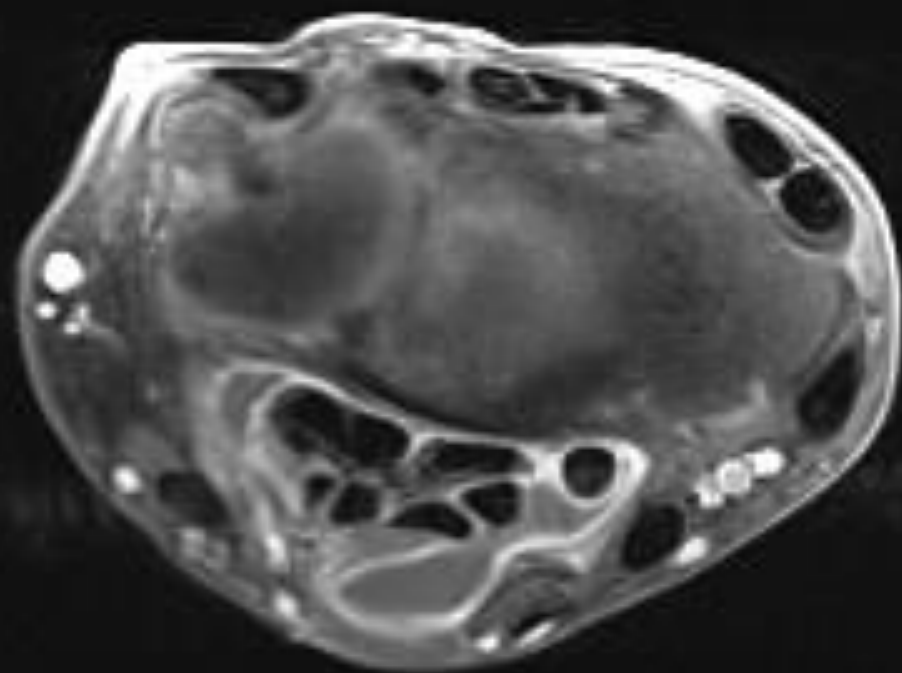


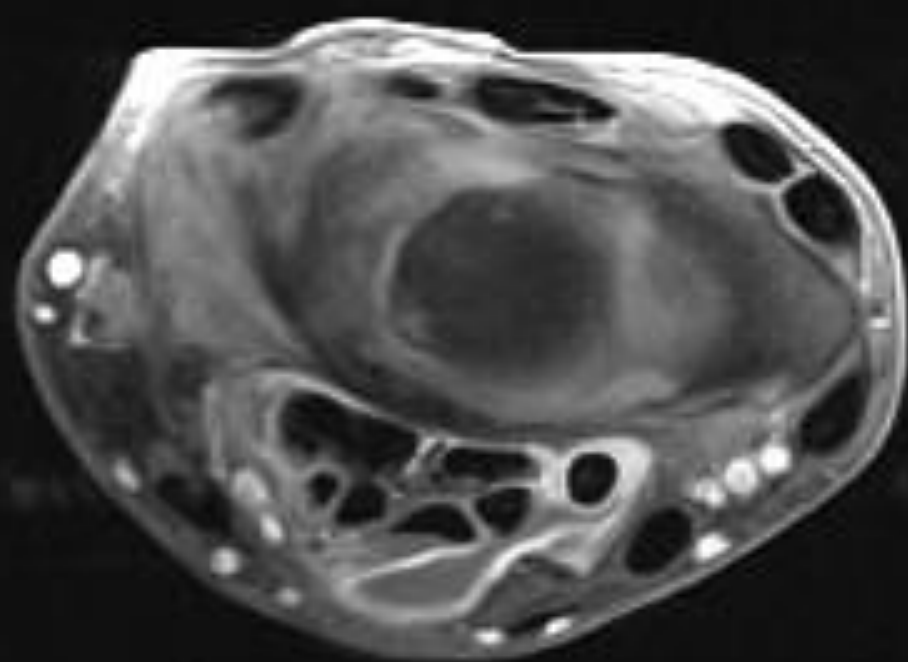


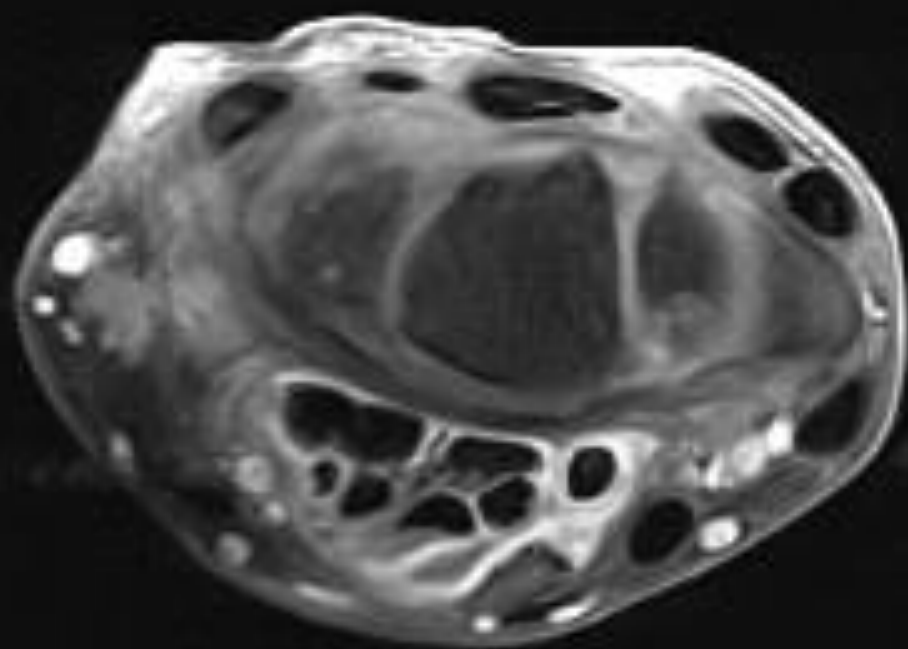


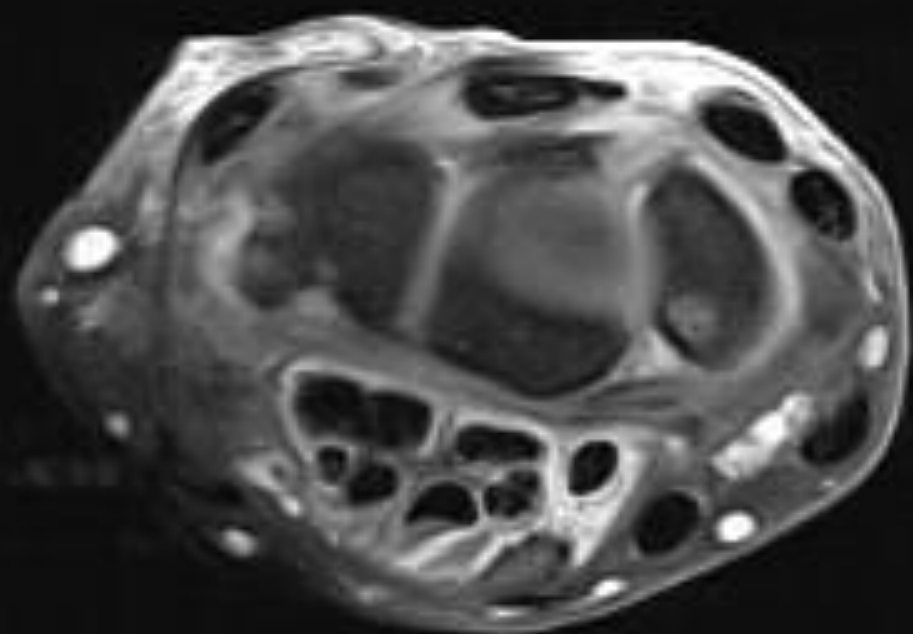


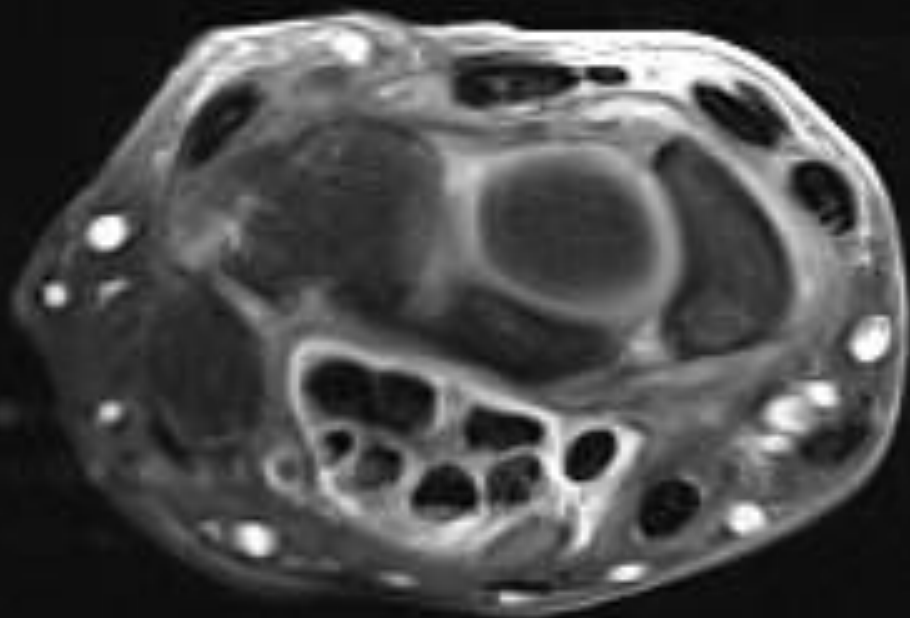


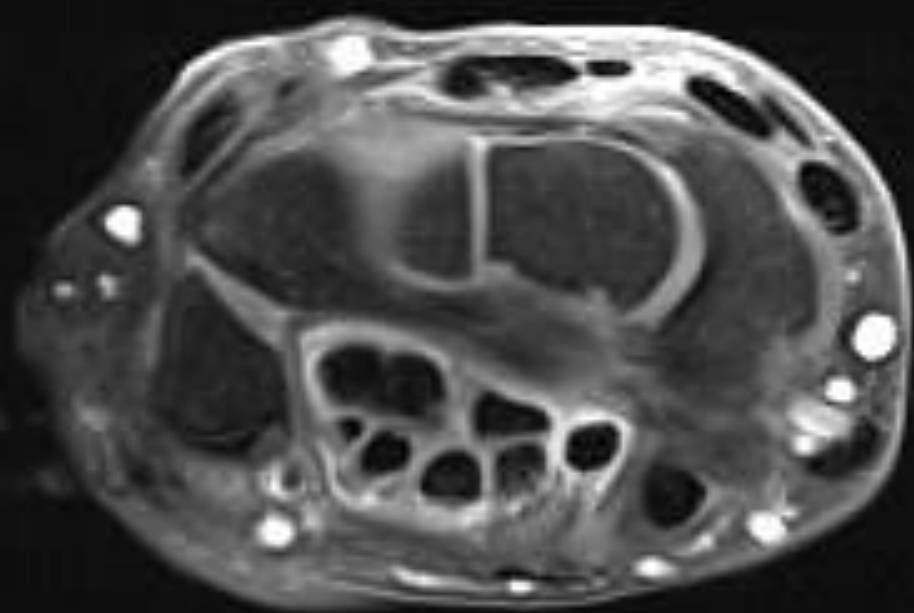


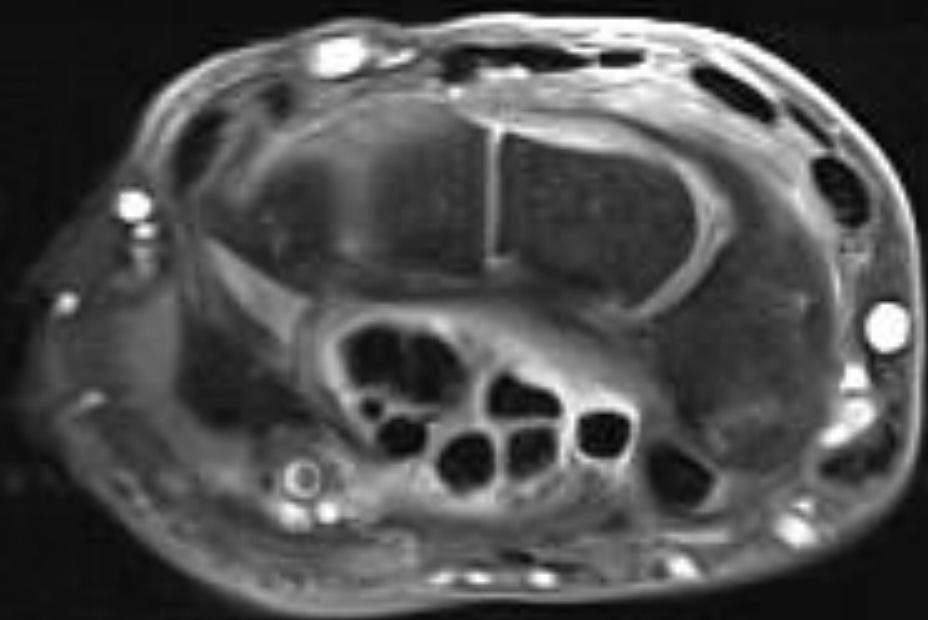


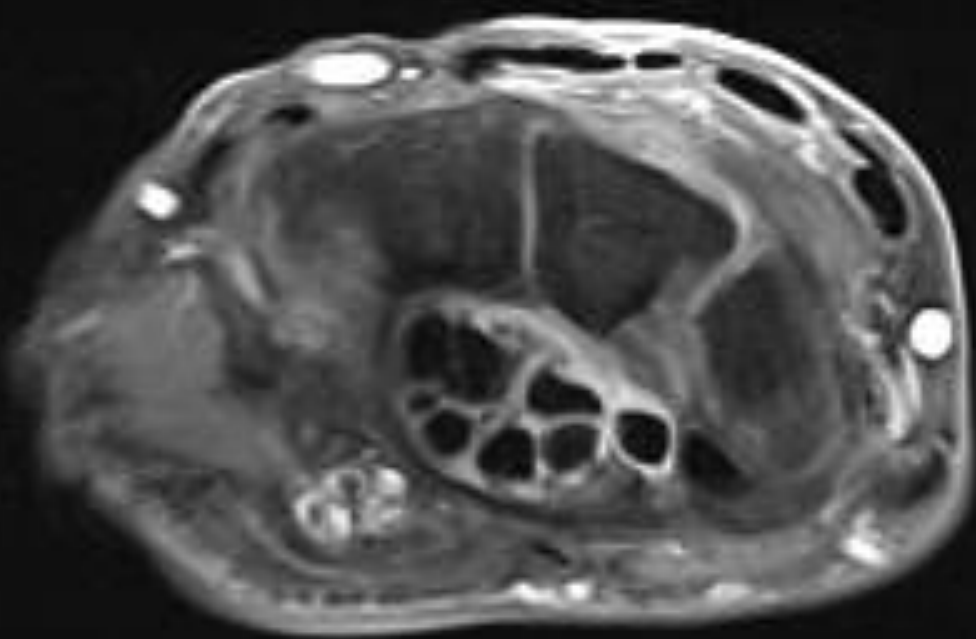


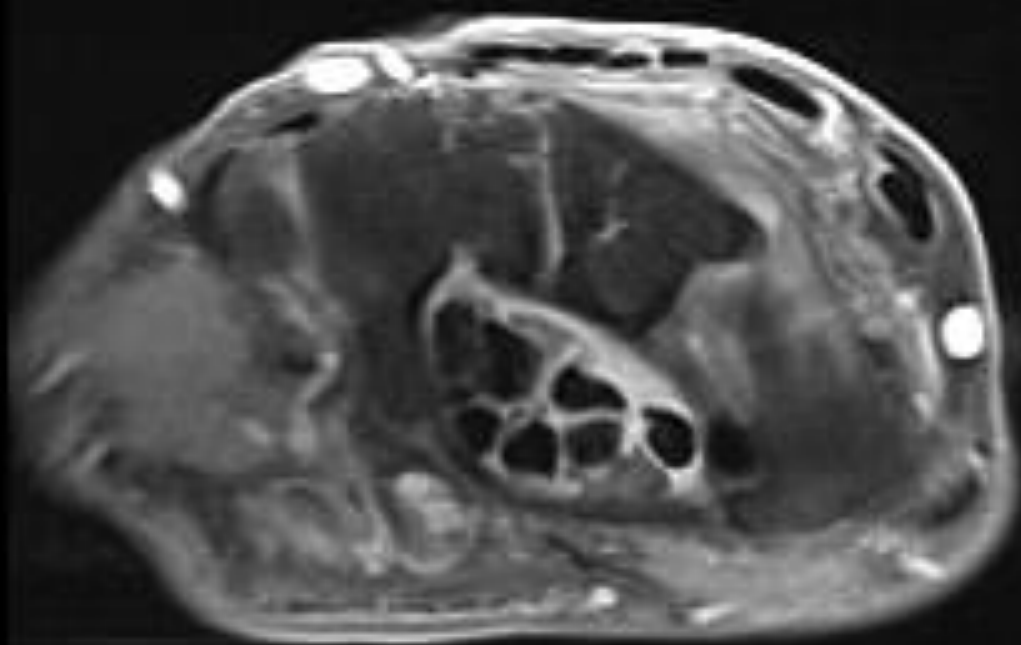


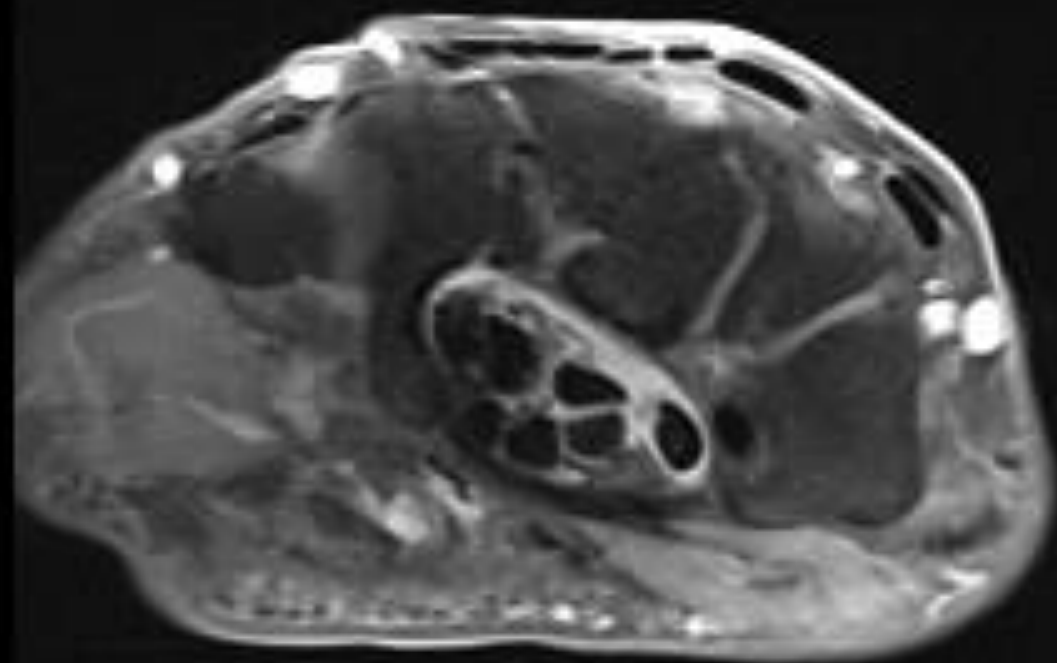


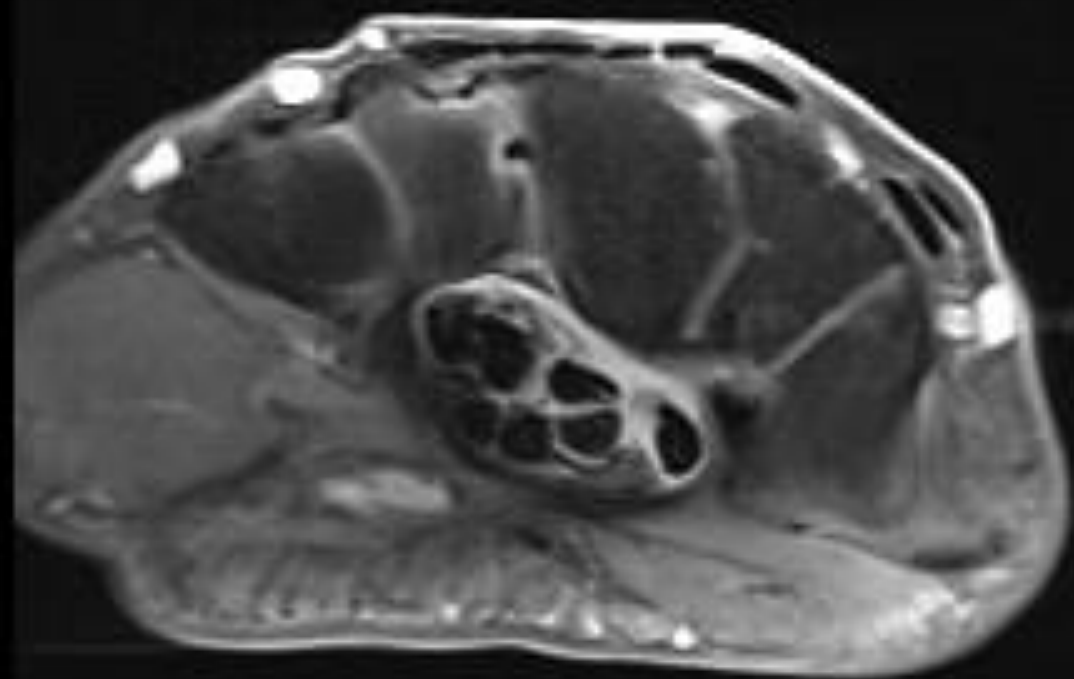


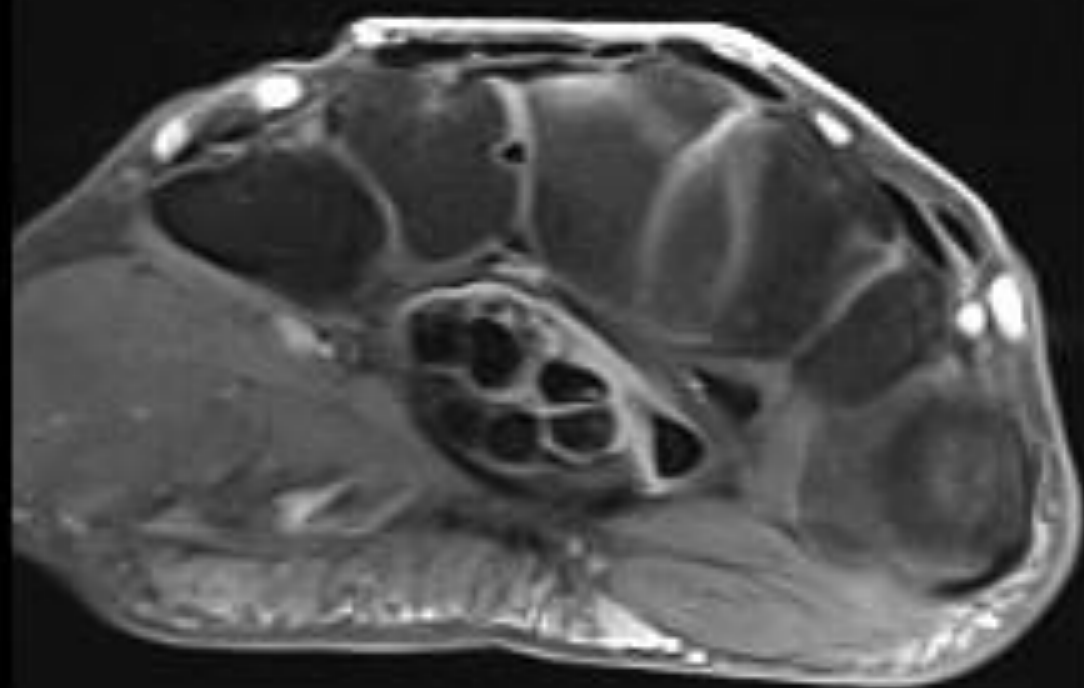


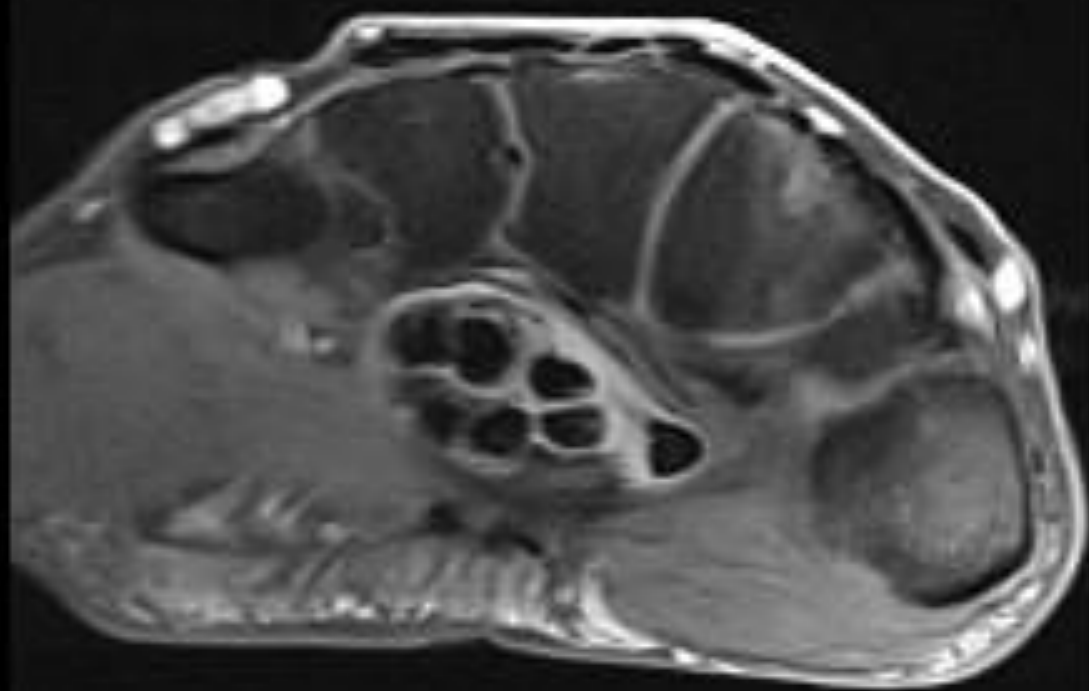


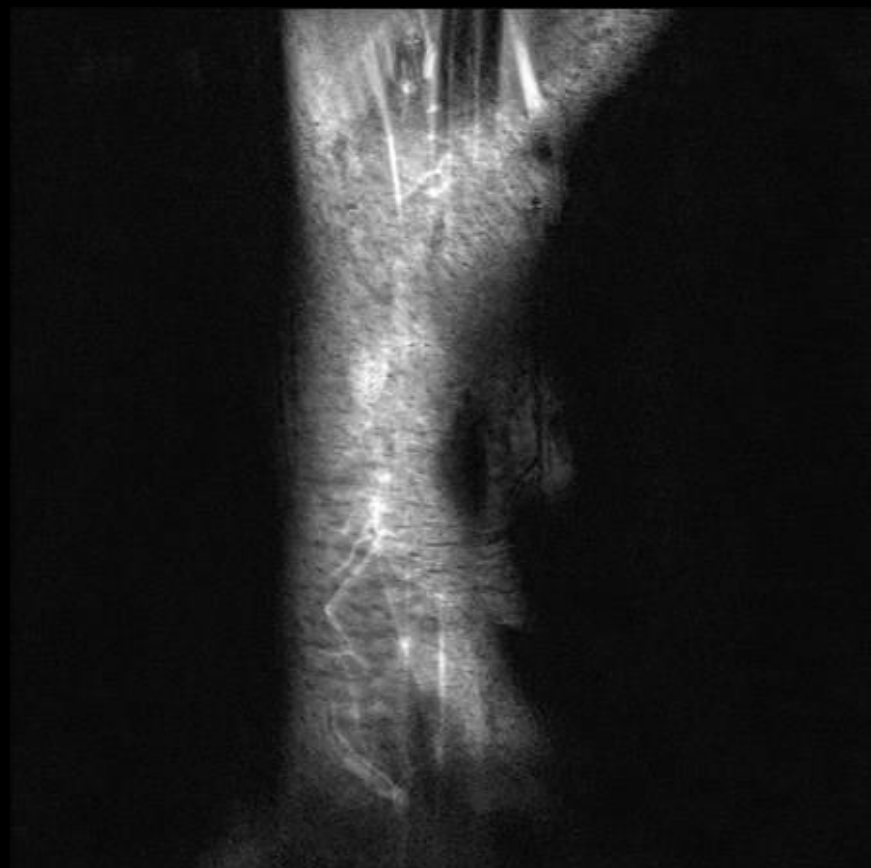


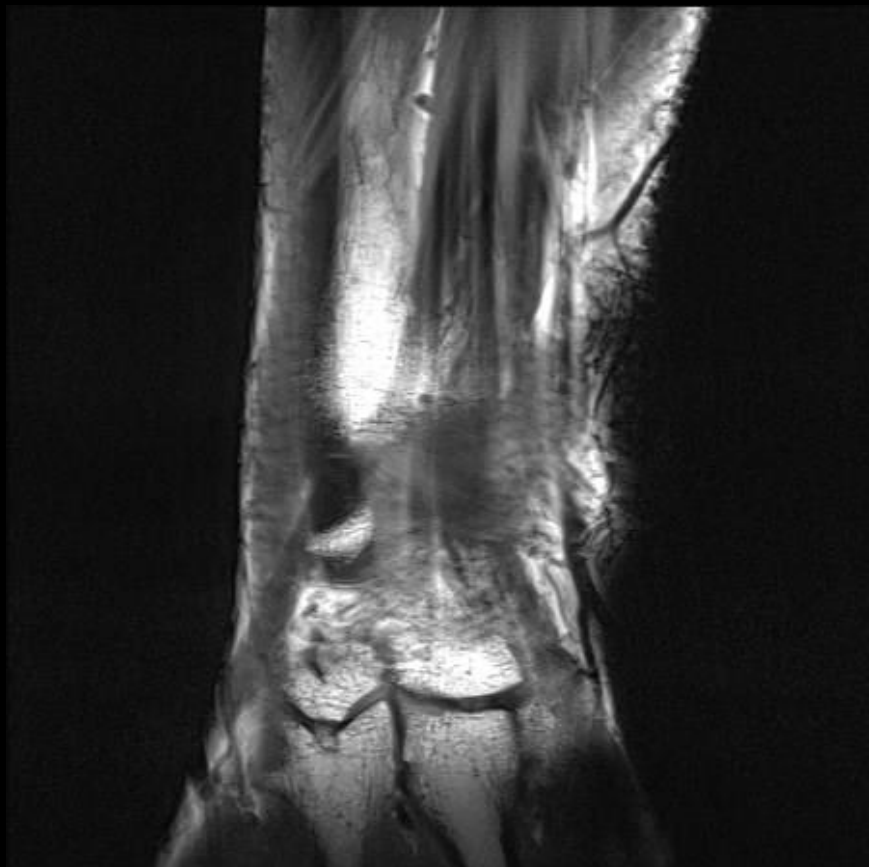










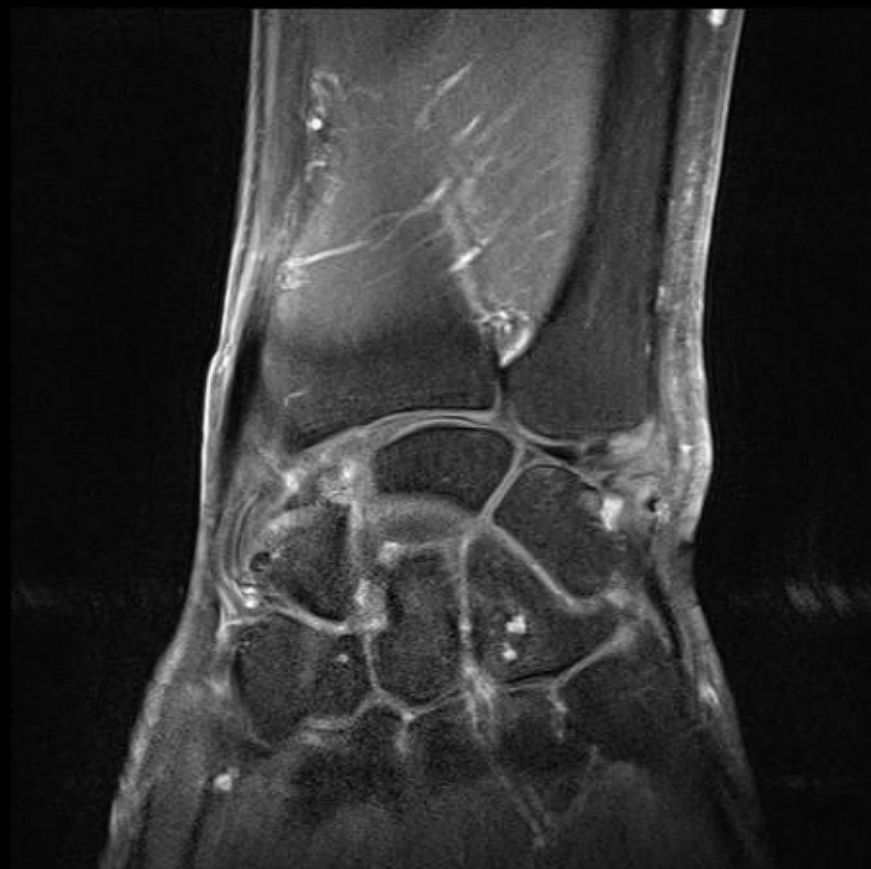






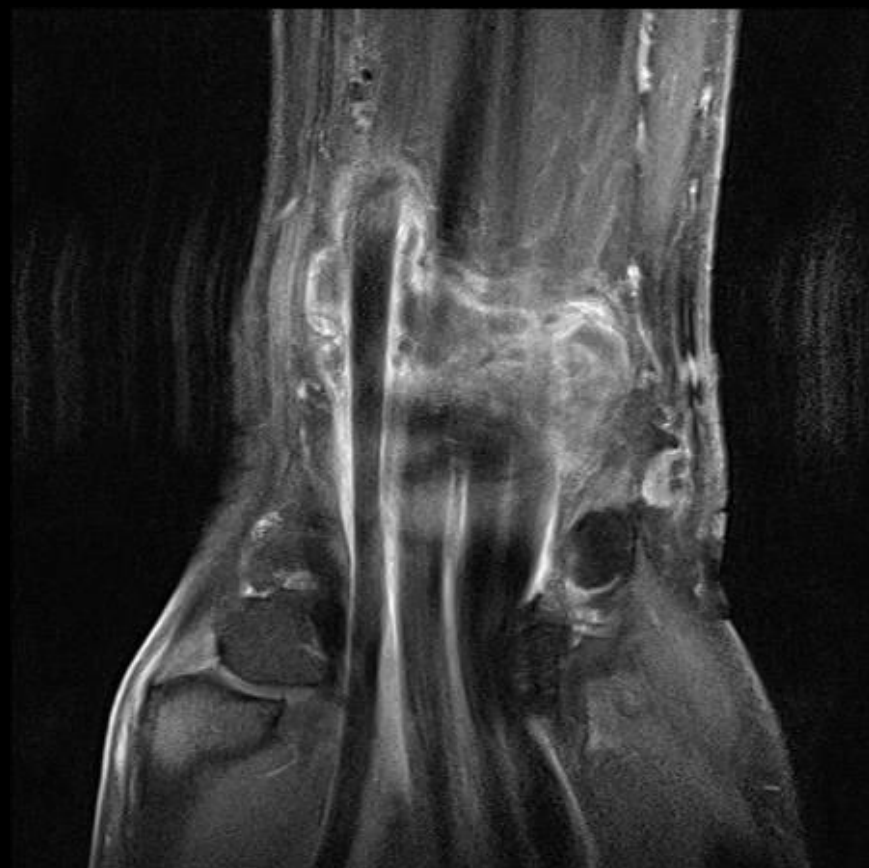
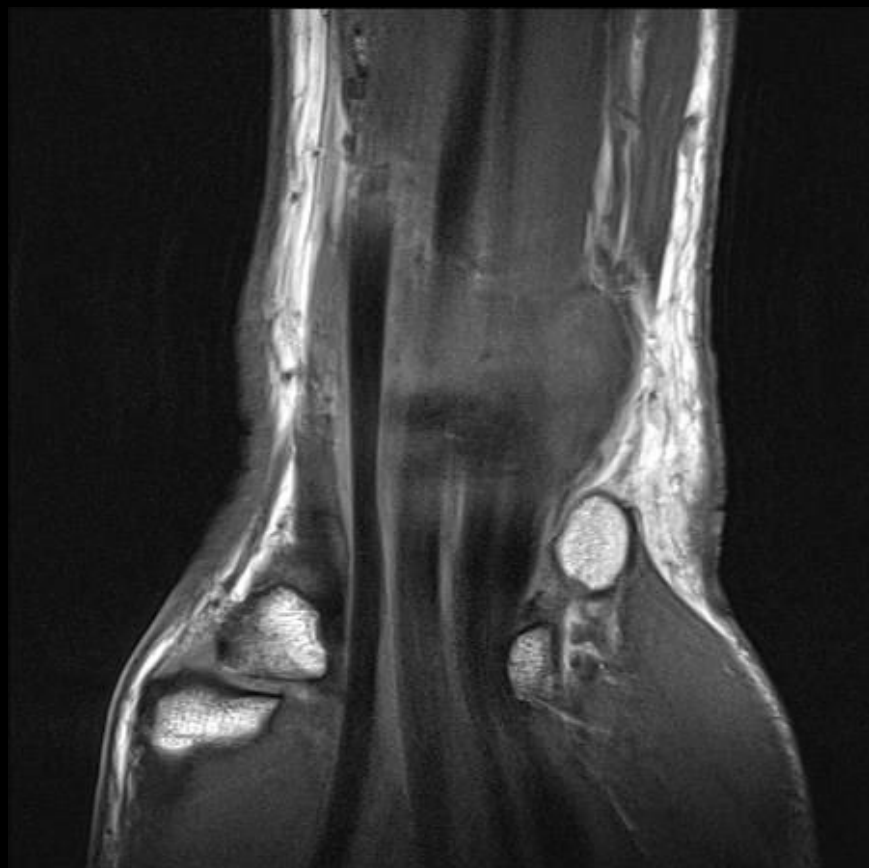


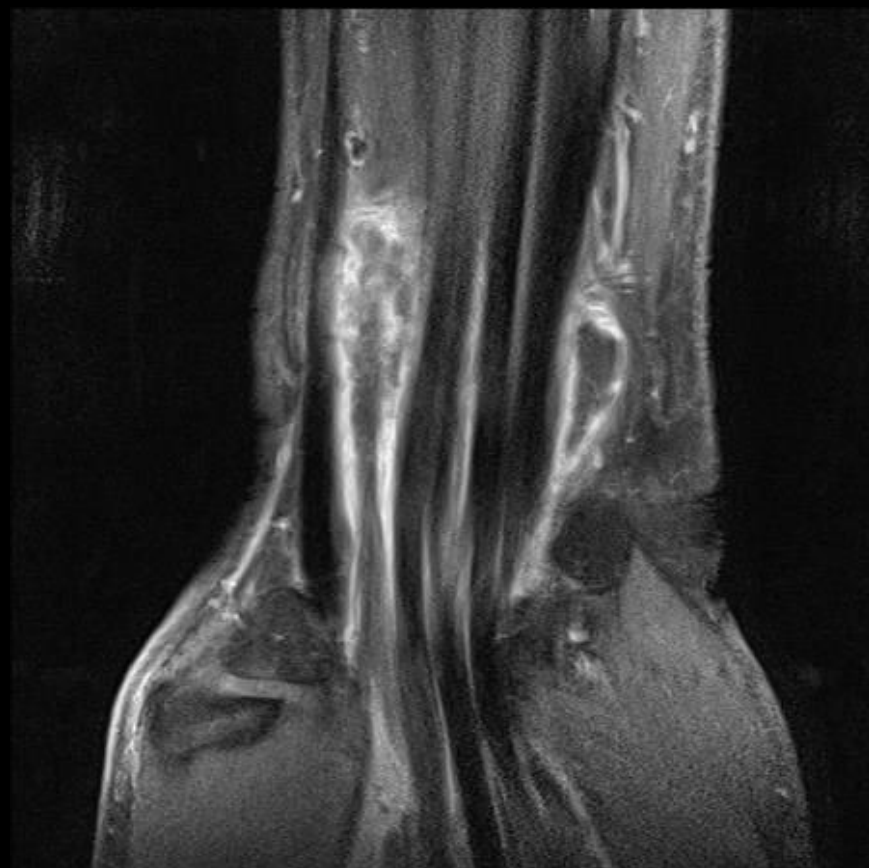
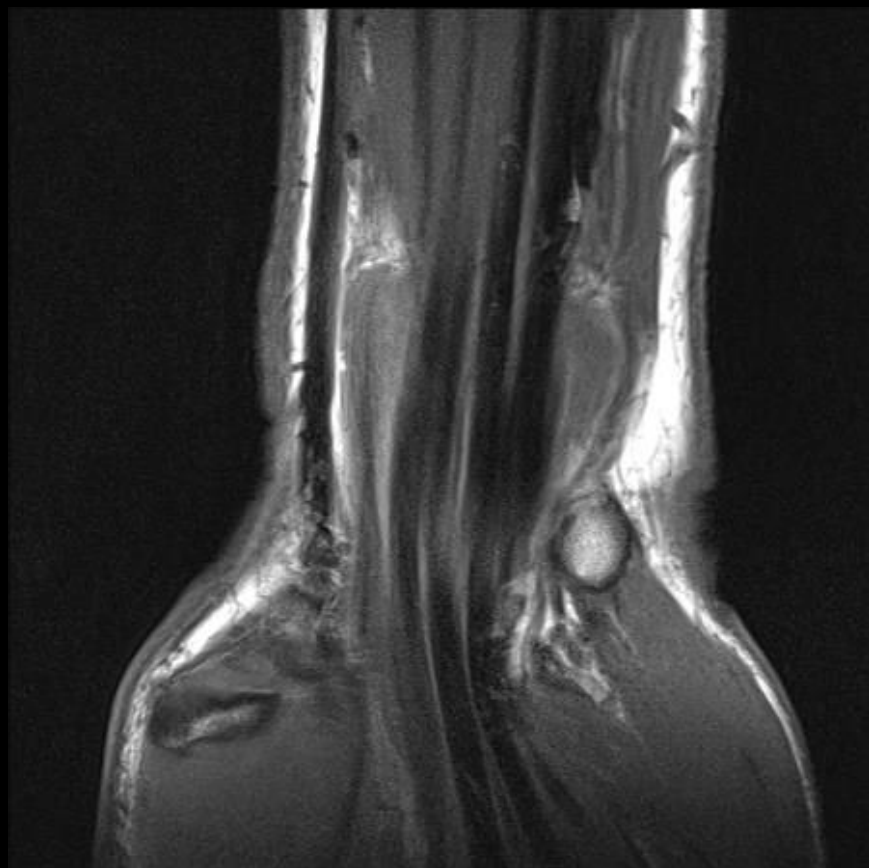


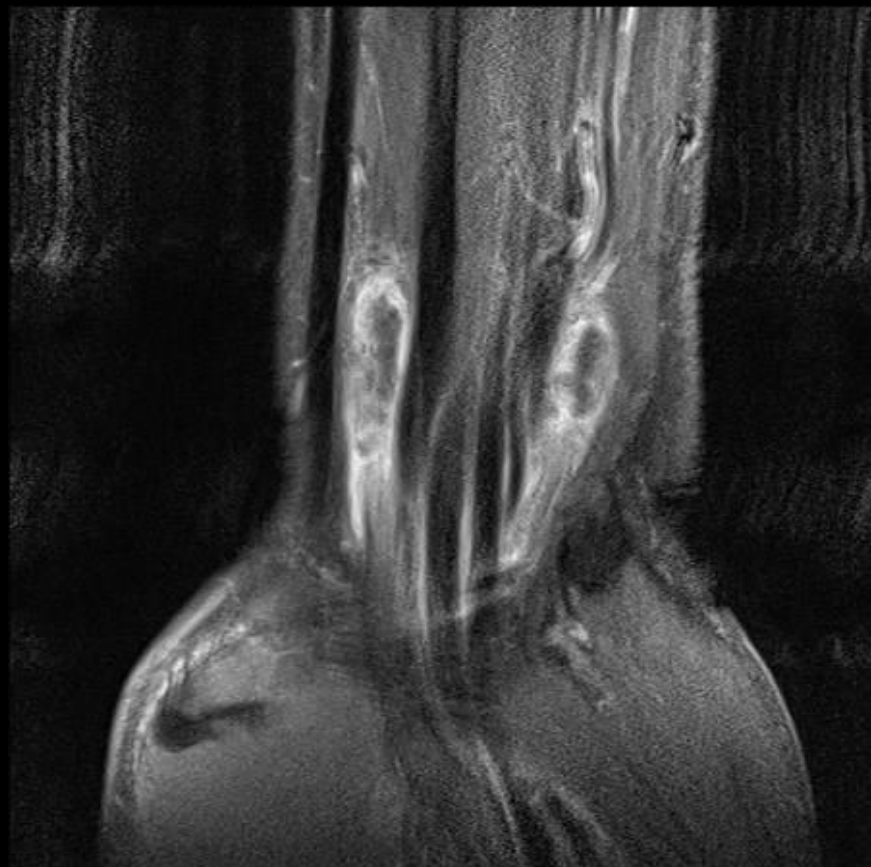
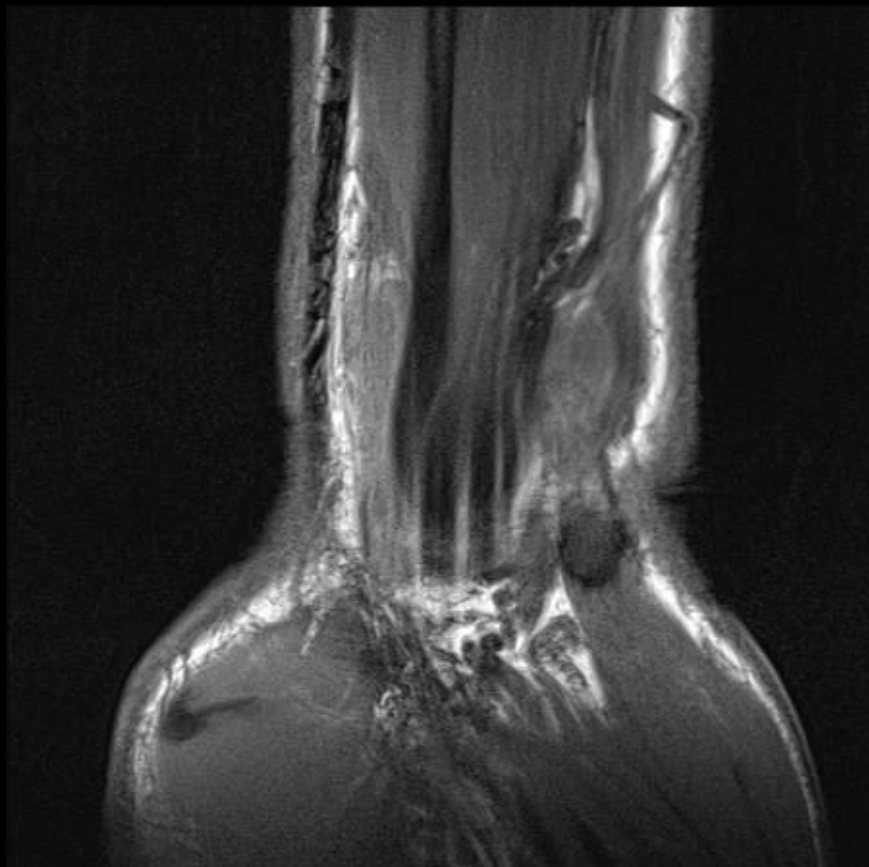


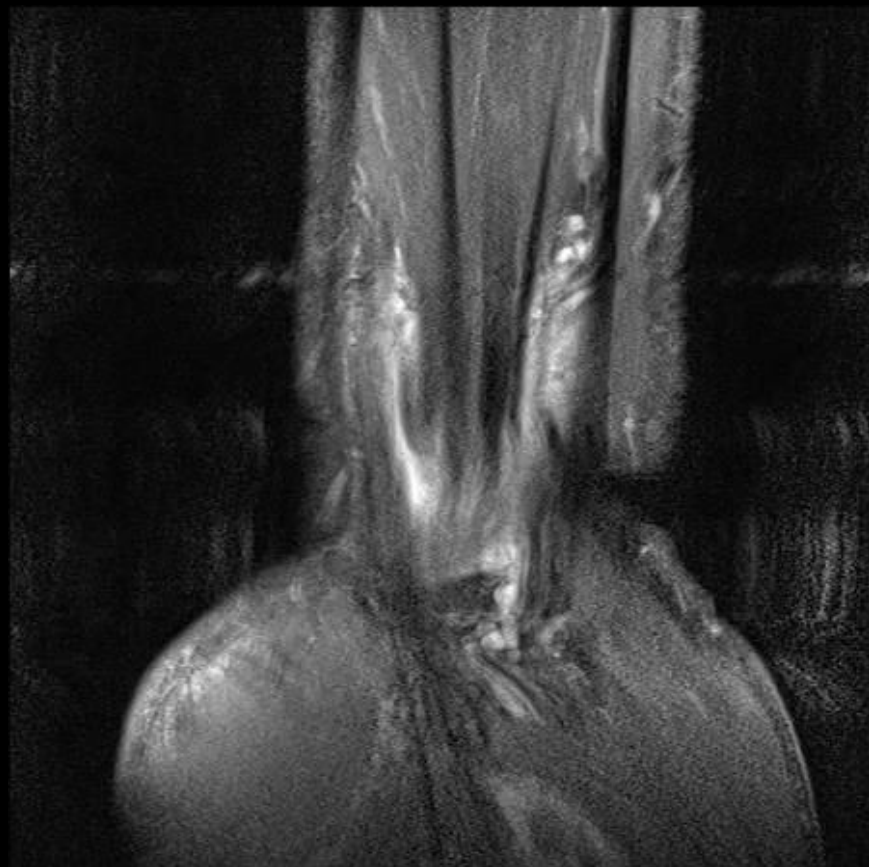
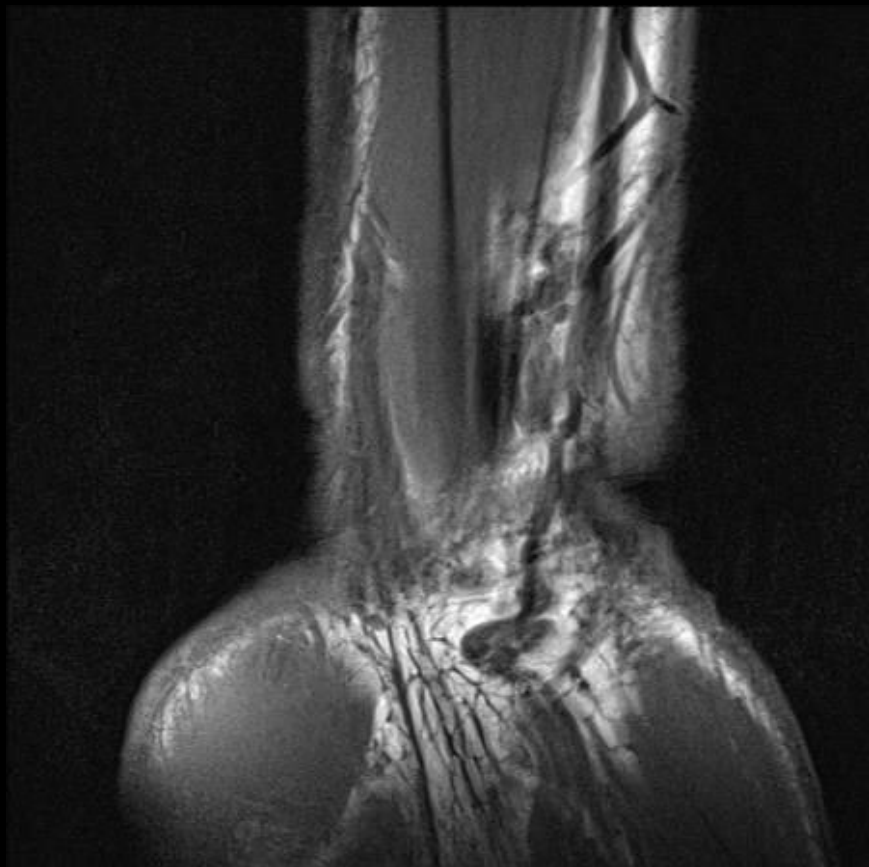


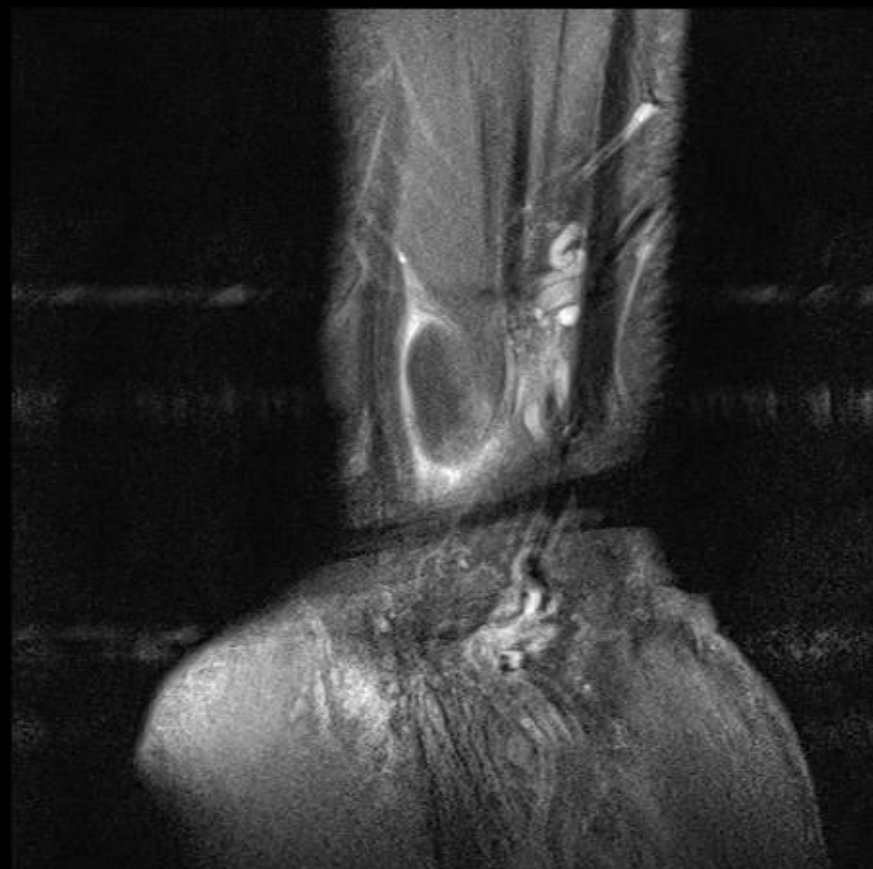




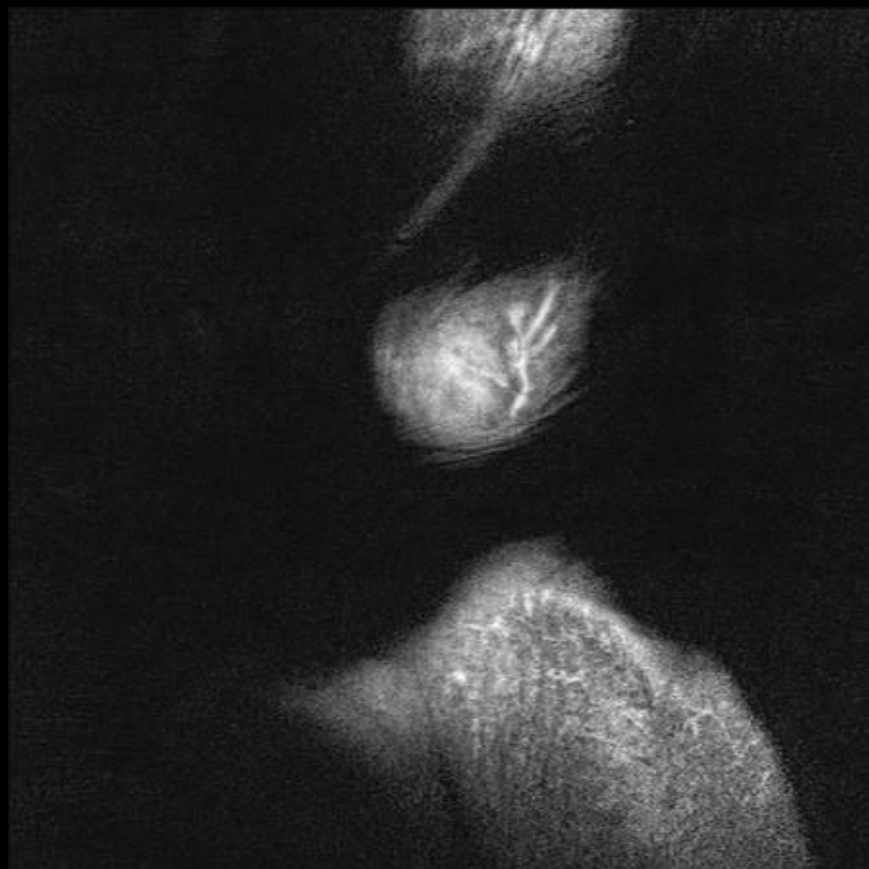








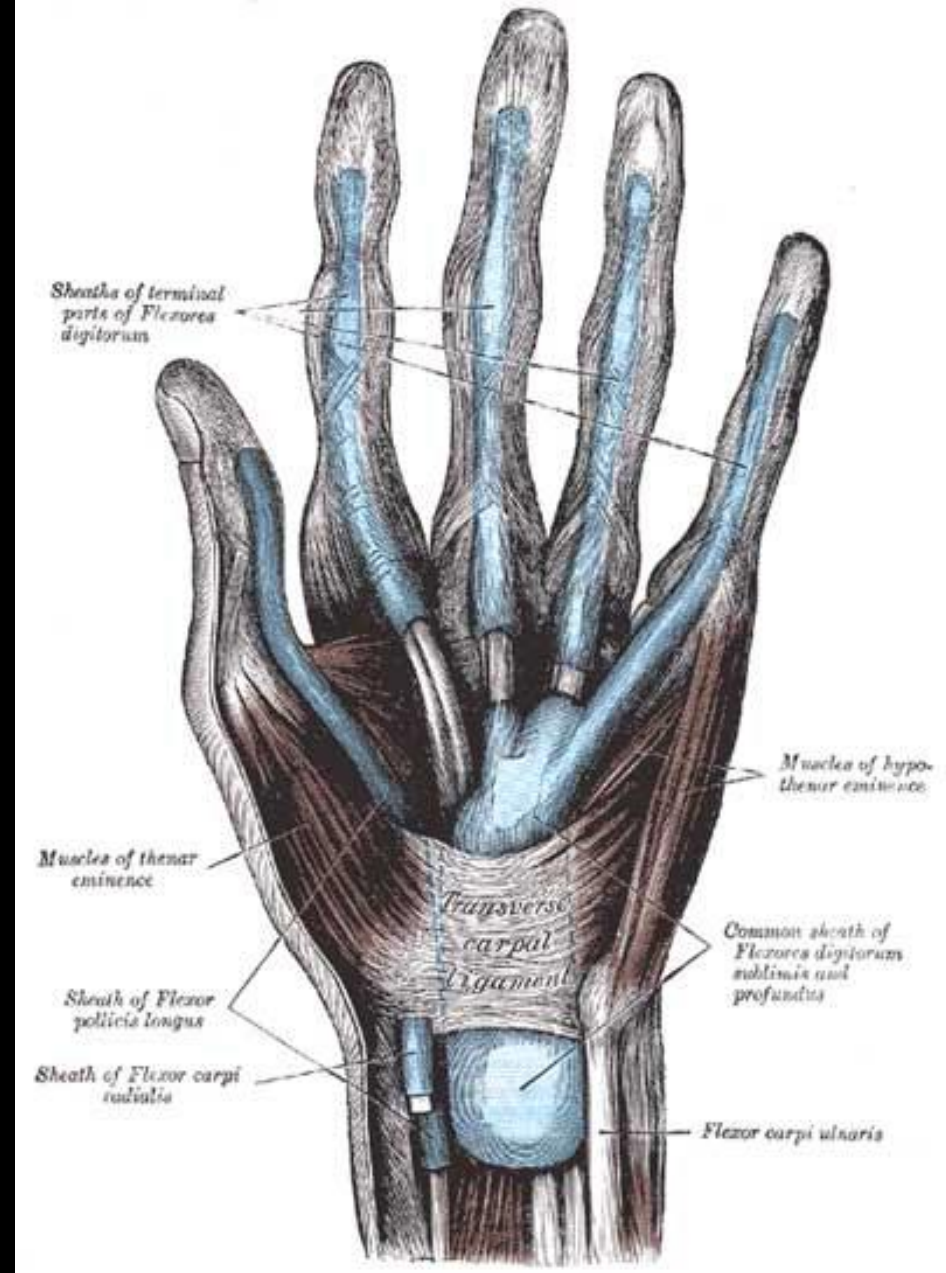
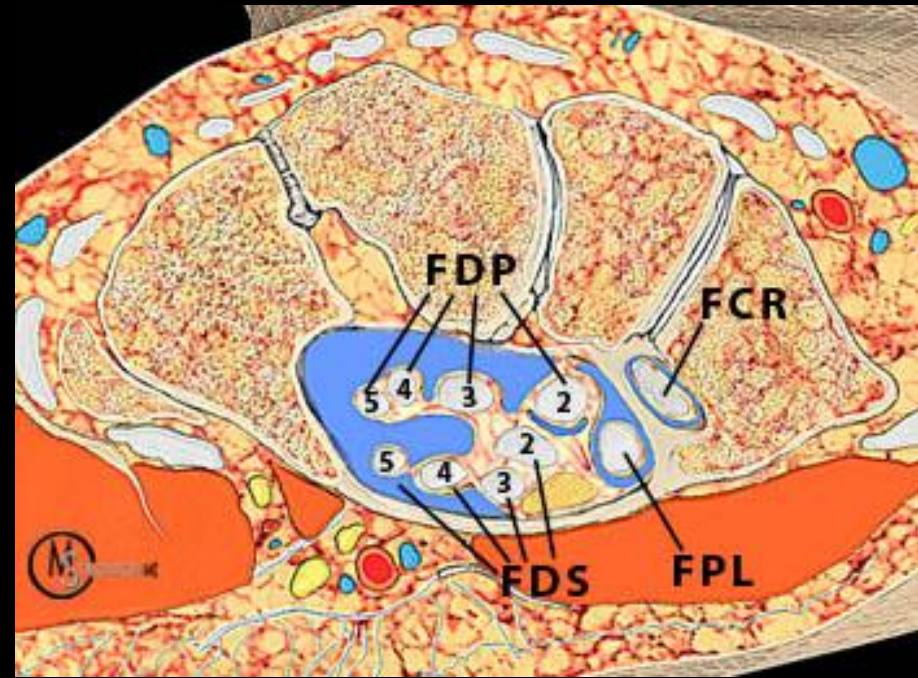






Discussion points

- Communication between the ulnar and radial bursae at the level of the carpal tunnel is common, occurring in 50%-100% of persons
- Any tenosynovial process-infectious, inflammatory, neoplastic-of the FPL or FD5 tendon sheaths, given typical anatomy, will have the potential to spread from one tendon sheath into the other tendon sheath via the palmar bursae



FASCIAL SPACES OF THE MID PALMAR COMPARTMENT

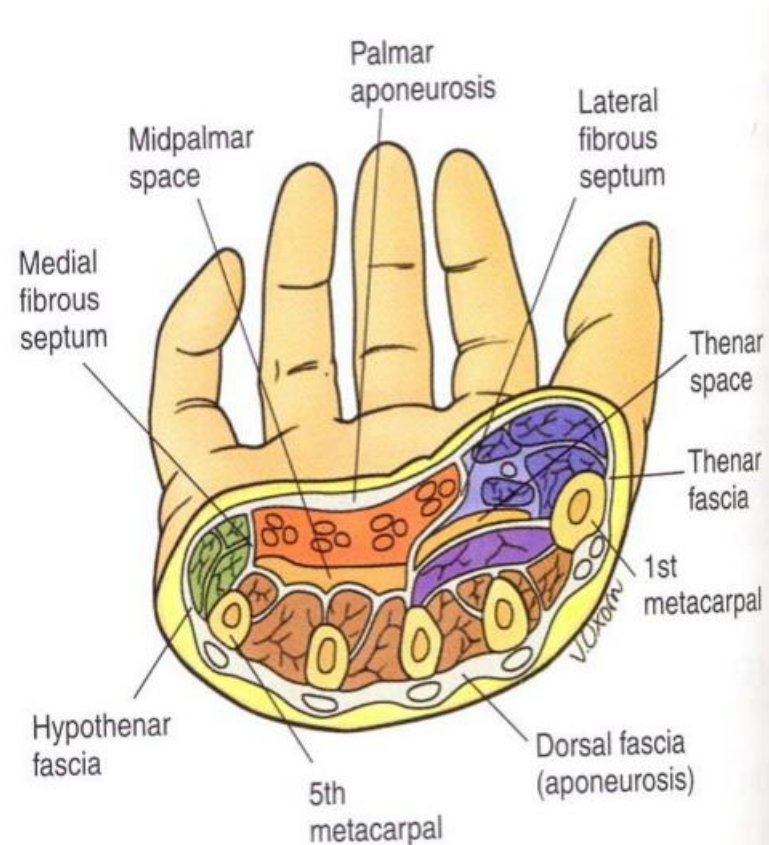
[SPACE - is defined as any area between fascial layers of a compartment. Generally, a space is always a potential space, as it contains nothing except maybe some tissue fluid.]

These spaces lie in the midpalmar compartment, posterior to the radial and ulnar bursa and the adductor pollicis muscle.

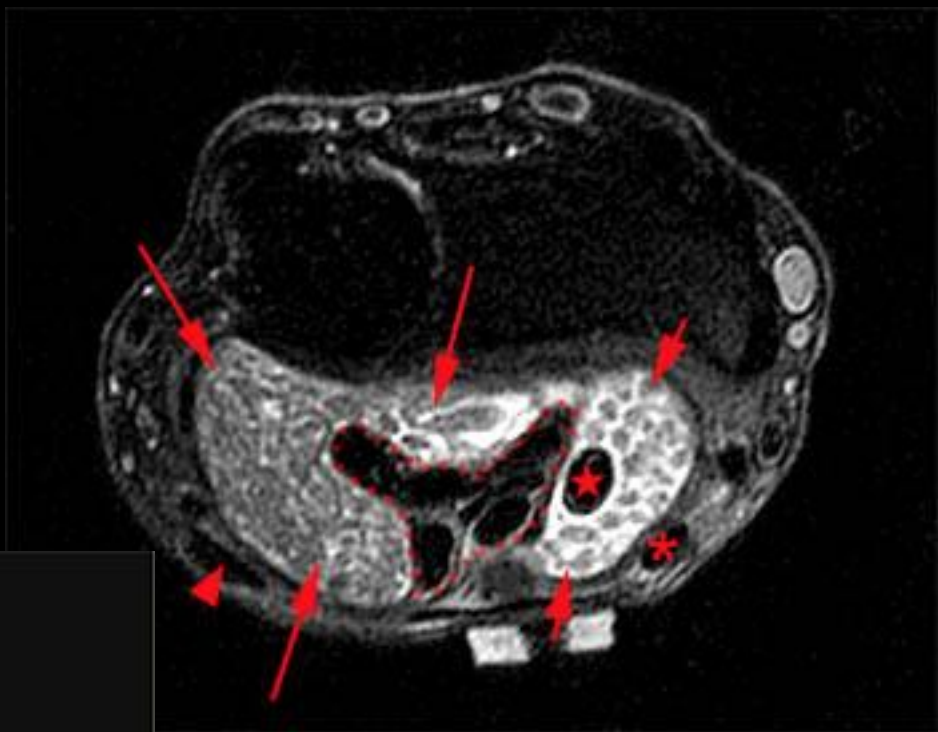
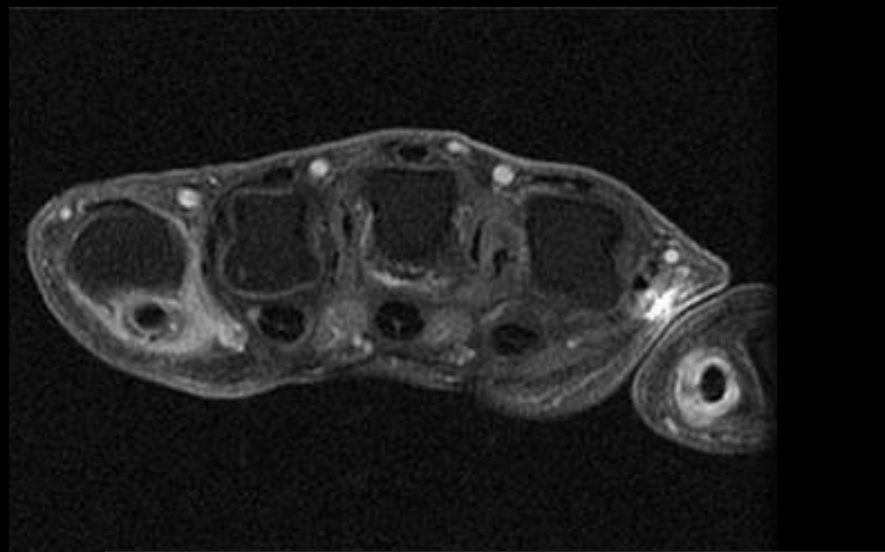
These spaces are separated by the oblique palmar septum, which extends from the anterior border of the 3rd metacarpal to the palmar aponeurosis.

1. Lateral palmar space is lateral to the oblique septum, and
2. medial palmar space is medial to the oblique palmar septum.

Thus any infection in these areas can move only proximally but not laterally or medially.







Rice bodies

- Rice bodies are small fibrinous bodies that develop in the setting of chronic synovial inflammation
 - DX:
 - Mycobacterium tuberculosis
 - Fungal infection
 - Rheumatoid arthritis
 - Psoriasis
 - Sarcoidosis
 - Numerous chronic inflammatory conditions have been associated with rice body formation and can produce a similar appearance

Atypical mycobacterial infections

- Atypical mycobacterial infections involving the musculoskeletal system are most frequently present within the wrist and hand.
- Association may be related to the increased risk for infectious inoculation via penetrating injuries and the abundance of synovium in the hand
- *Mycobacterium marinum* is a common causative species
 - history of exposure to contaminated water

Management

- Infection
 - Fluid sampling is typically necessary to confirm the diagnosis and isolate a particular organism.
 - Prompt initiation of appropriate antimicrobial therapy is an important component of treatment, as failure to treat infectious tenosynovitis and septic bursitis in a rapid manner may result in tendon or tendon sheath necrosis, osteomyelitis, or septic arthritis, among other potential complications
- Inflammatory arthropathies are treated with pharmacologic regimens tailored to the specific disease process
- Tumors are typically treated with surgical resection, and tumor-like synovial processes are commonly treated with synovectomy.

References

- MRI Web Clinic - June 2013
Palmar Bursae and Flexor Tendon Sheaths of the Wrist and Hand. MRI Web Clinic - June 2013. Shareef Riad, M.D., Chad Mann, M.D., Donald Resnick, M.D. <http://radsourc.us/clinic/1306>
- Lee EY, Rubin DA, and Brown DM. Recurrent Mycobacterium marinum tenosynovitis of the wrist mimicking extraarticular synovial chondromatosis on MR images. Skeletal Radiol. 2004;33(7):405-408.
- Walker EA, Murphey MD, and Fetsch JF. Imaging characteristics of tenosynovial and bursal chondromatosis. Skeletal Radiol. 2011;40:317-325.