

# UTE Quantitative MRI:

## Clinical applications



Michael Im  
January 17, 2013

# Background and Significance

## Osteoarthritis

More than 20 million in US  
80-90% > 65 yo

Major cause of:  
Work disability  
Reduced quality of life





■ [Home](#)

■ [News](#)

■ [Travel](#)

■ [Money](#)

■ [Sports](#)

■ [Life](#)

[News](#) » [Health & Behavior](#) ■ [Fitness & Nutrition](#) ■ [Your Health: Kim Painter](#)

# Osteoarthritis costs U.S. \$185B a year

Posted 12/4/2009 1:57 PM | [Comment](#)  | [Recommend](#)

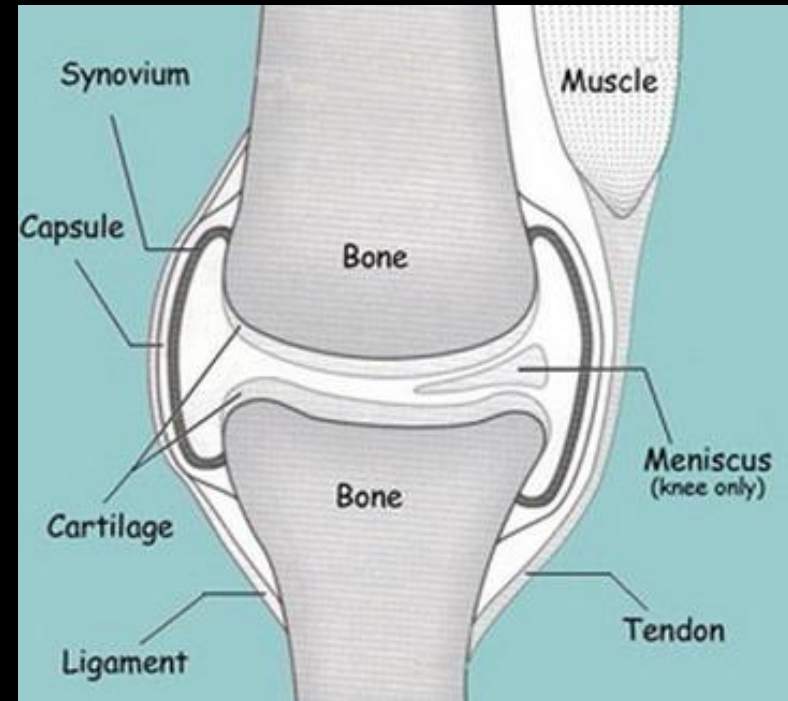
By [Robert Preidt](#), [HealthDay News](#)

The study authors said increased awareness and [better screening](#) to identify patients with osteoarthritis may help delay disease progression and resulting disability, thus reducing medical costs.

# Background and Significance

## Whole joint concept

Cartilage and meniscus pathology contribute to osteoarthritis



**Hypothesis:** Better visualization will lead to improved patient care

# MRI

Visible  
Long T2

Invisible  
Short T2

| Tissue or tissue component                     | Mean $T_2$  |
|--|---|
| Deep layers of articular cartilage             | 5–10 ms   |
| Knee menisci                                   | 5–8 ms  |
| Ligaments                                      | 7–10 ms   |
| Achilles tendon                                | 0.25 and 0.7 ms, 1.2 ± 0.2 ms, 0.53 ms (88%) and 4.8 ms (12%), 7 ms |
| Cortical bone                                  | 0.4–0.5 ms  |
| Dentine  | 0.15 ms   |
| Dental enamel                                  | 70 μs   |
| Protons in water tightly bound to proteins     | 10 μs   |
| Protons in proteins                            | 10 μs   |
| Protons in solids, e.g. calcium hydroxyapatite | 1 μs or less  |

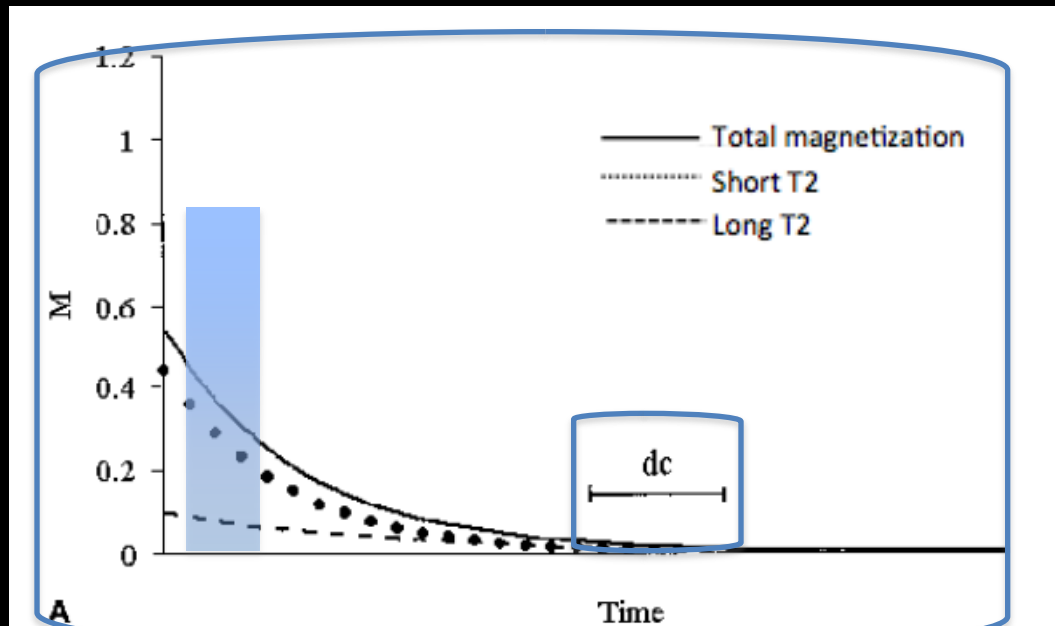
# Conventional MRI vs UTE T1rho

## Meniscus

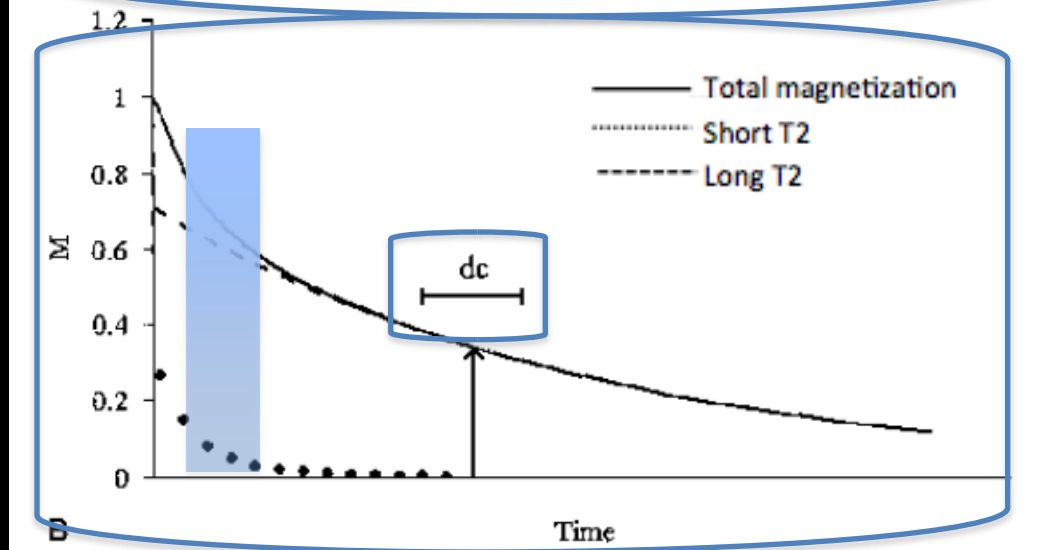


# Transverse magnetization decay

Majority of short T2 components



Minority of Short T2 components



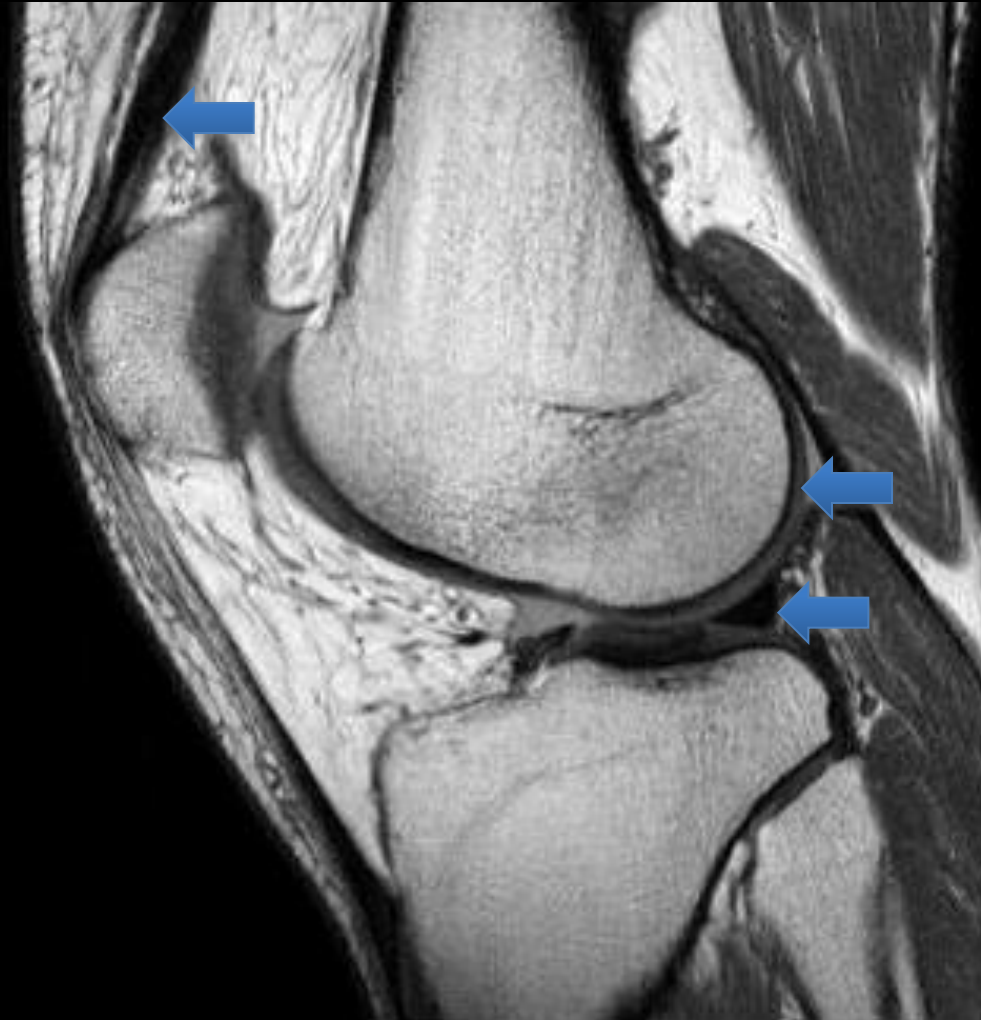
# Musculoskeletal short T2 tissues

**TABLE 3.** Normal (Adult) Tissues with a Majority of Short T2 Components

|                 |          |            |
|-----------------|----------|------------|
| Meninges (dura) | Falx     | Tentorium  |
| Membranes       | Capsules | Bands      |
| Retinaculi      | Septae   | Fascae     |
| Sheaths         | Nails    | Hair       |
| Aponeuroses     | Tendons  | Ligaments  |
| Menisci         | Labrii   | Periosteum |
| Bone            | Dentine  | Enamel     |

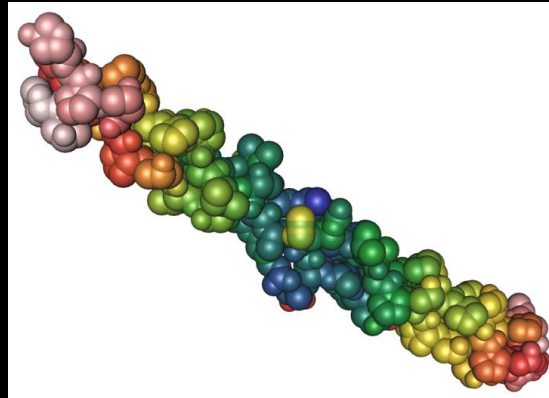


# Musculoskeletal short T2 tissues



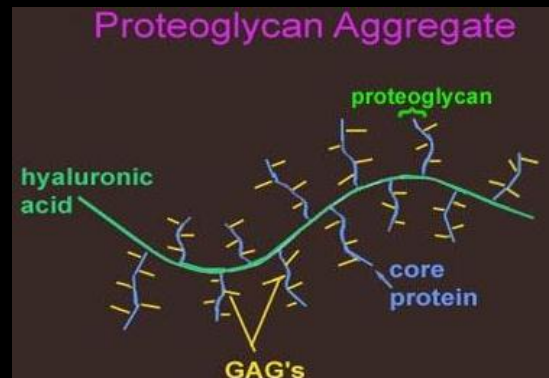
# Musculoskeletal short T2 tissues

Collagen



T2

Proteoglycan



T1rho

dGEMRIC

Na

# Purpose

Demonstrate clinical applications of  
UTE quantitative MRI

# UTE Clinical Applications

Novel MRI techniques can be utilized to quantify microstructural changes.

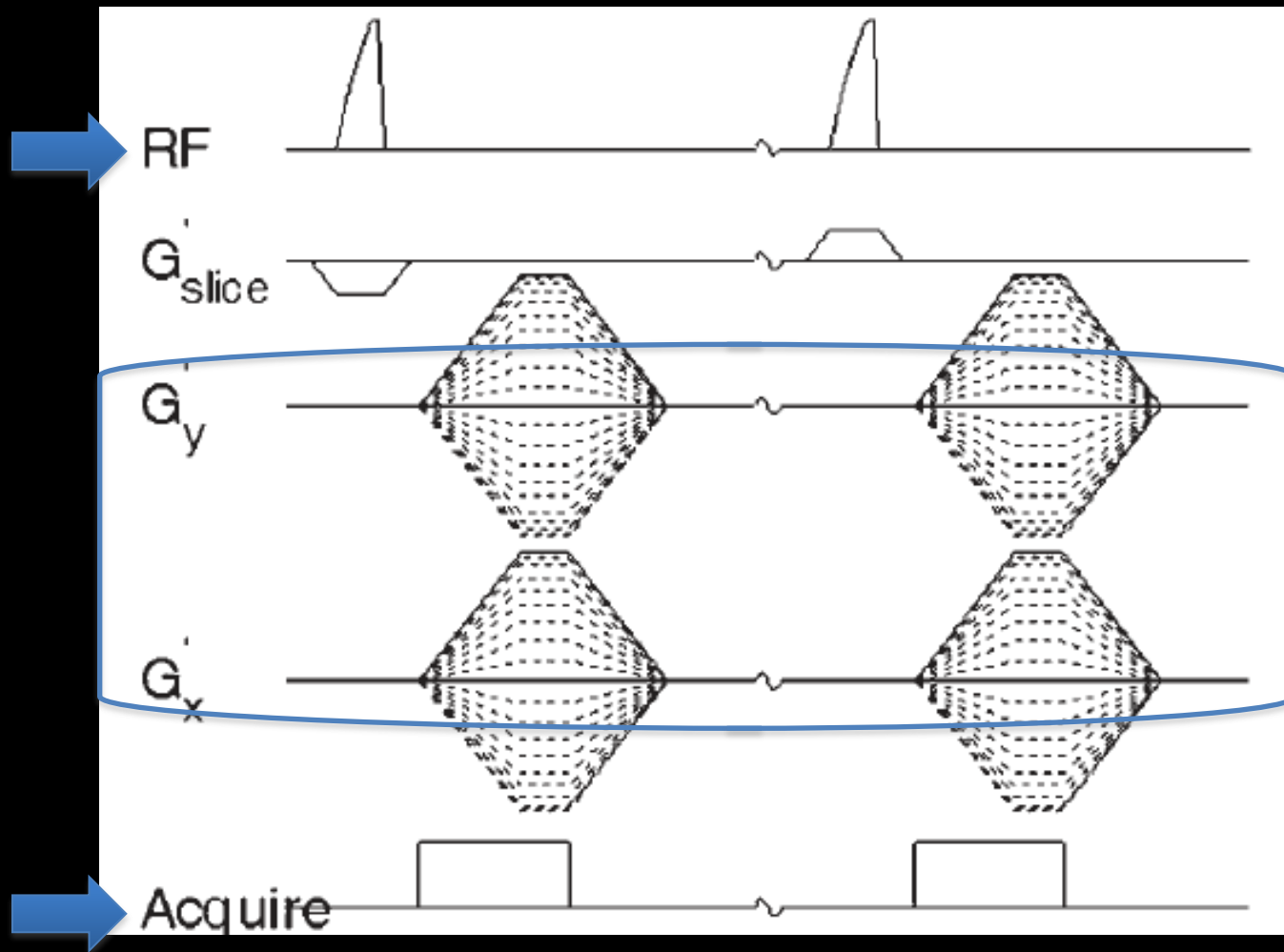
DIR UTE

UTE T1 rho

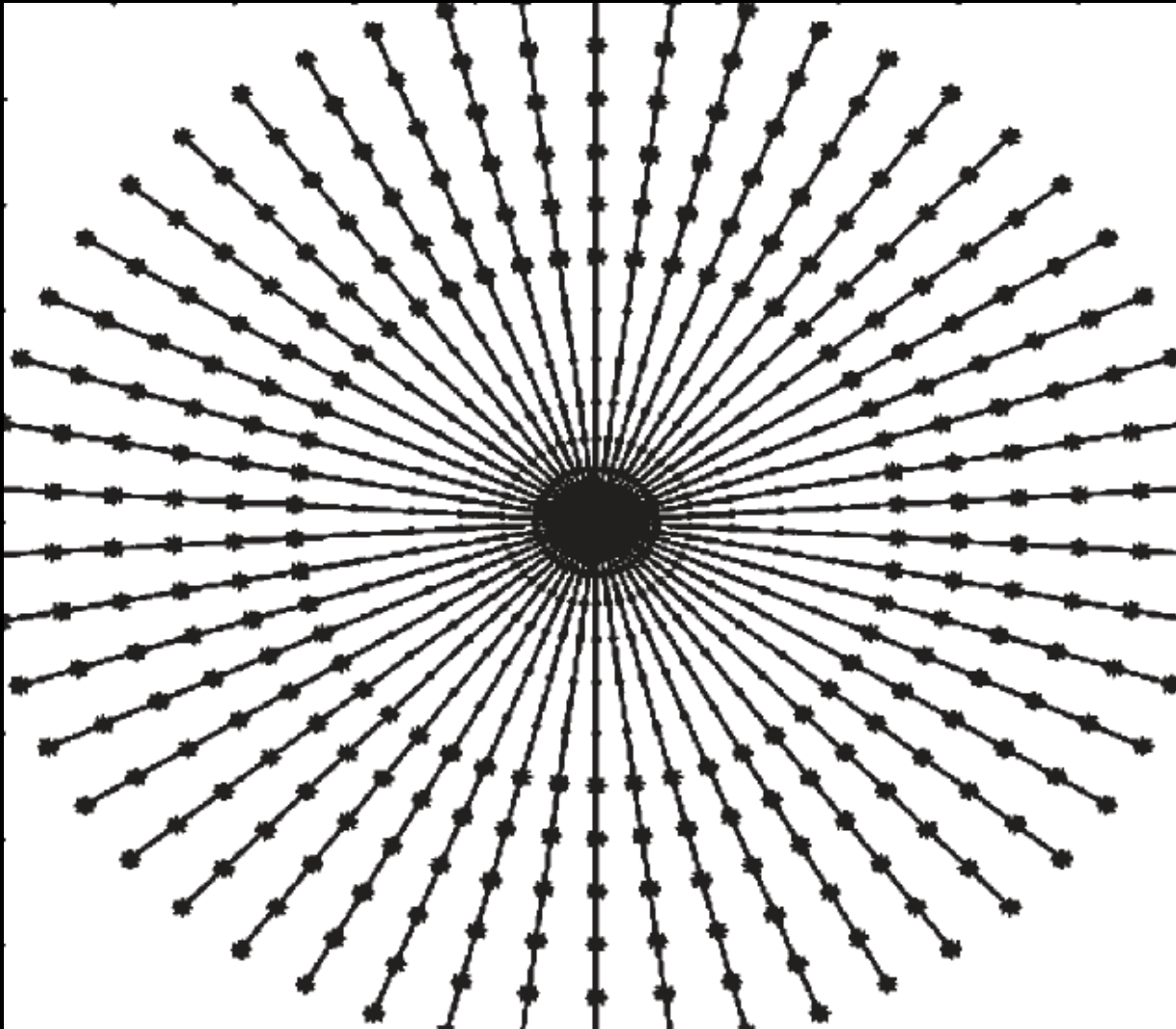
UTE T2\*

Early detection and quantify response to treatment

# UTE pulse sequence

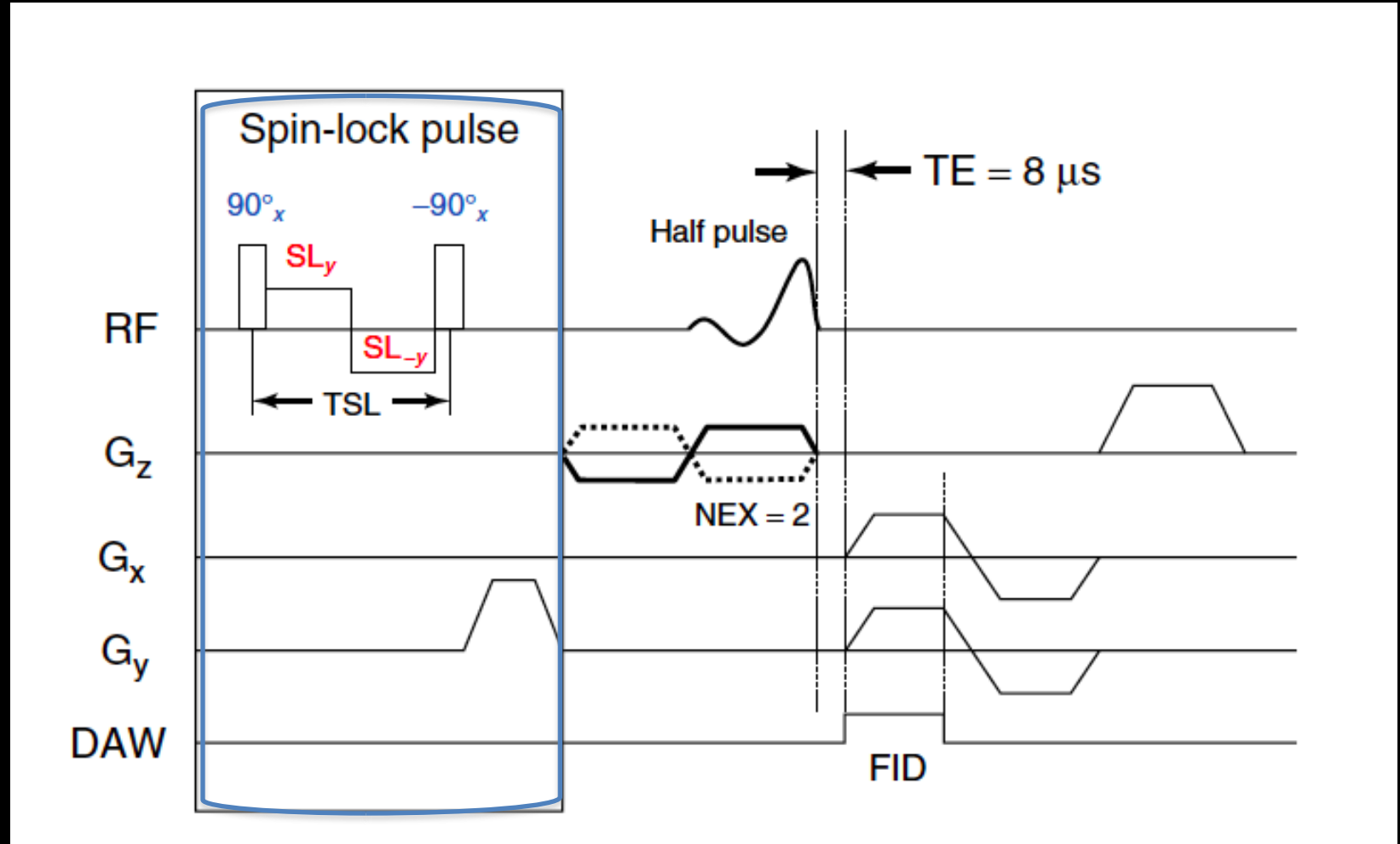


# Radial K-space acquisition



# UTE T1 rho

## Spin-lock pulse



# UTE Clinical Applications

## Articular Cartilage

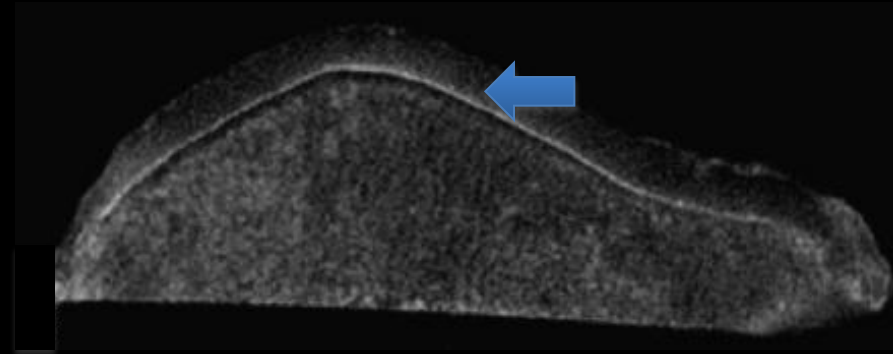
Patella

## Fibrocartilage

Intervertebral disc

Temporomandibular joint

Triangular fibrocartilage complex

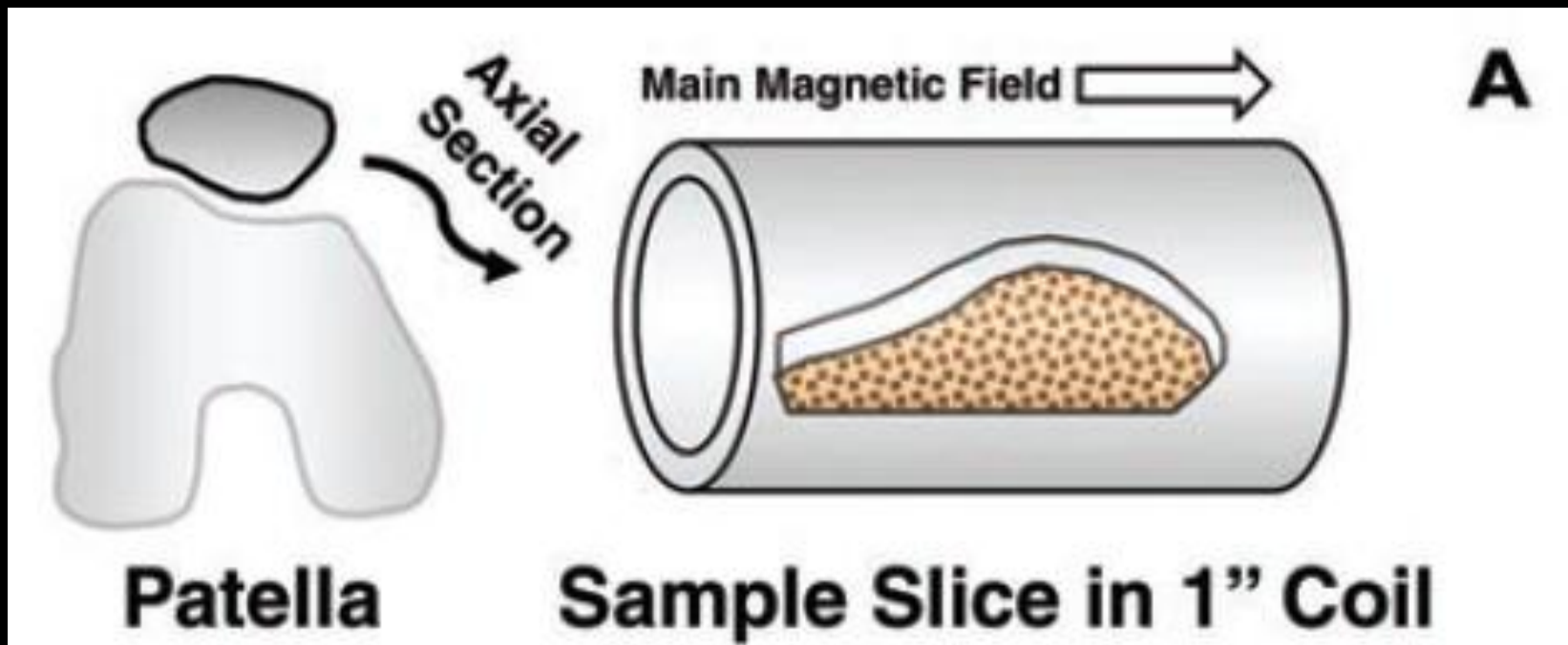


## Meniscus



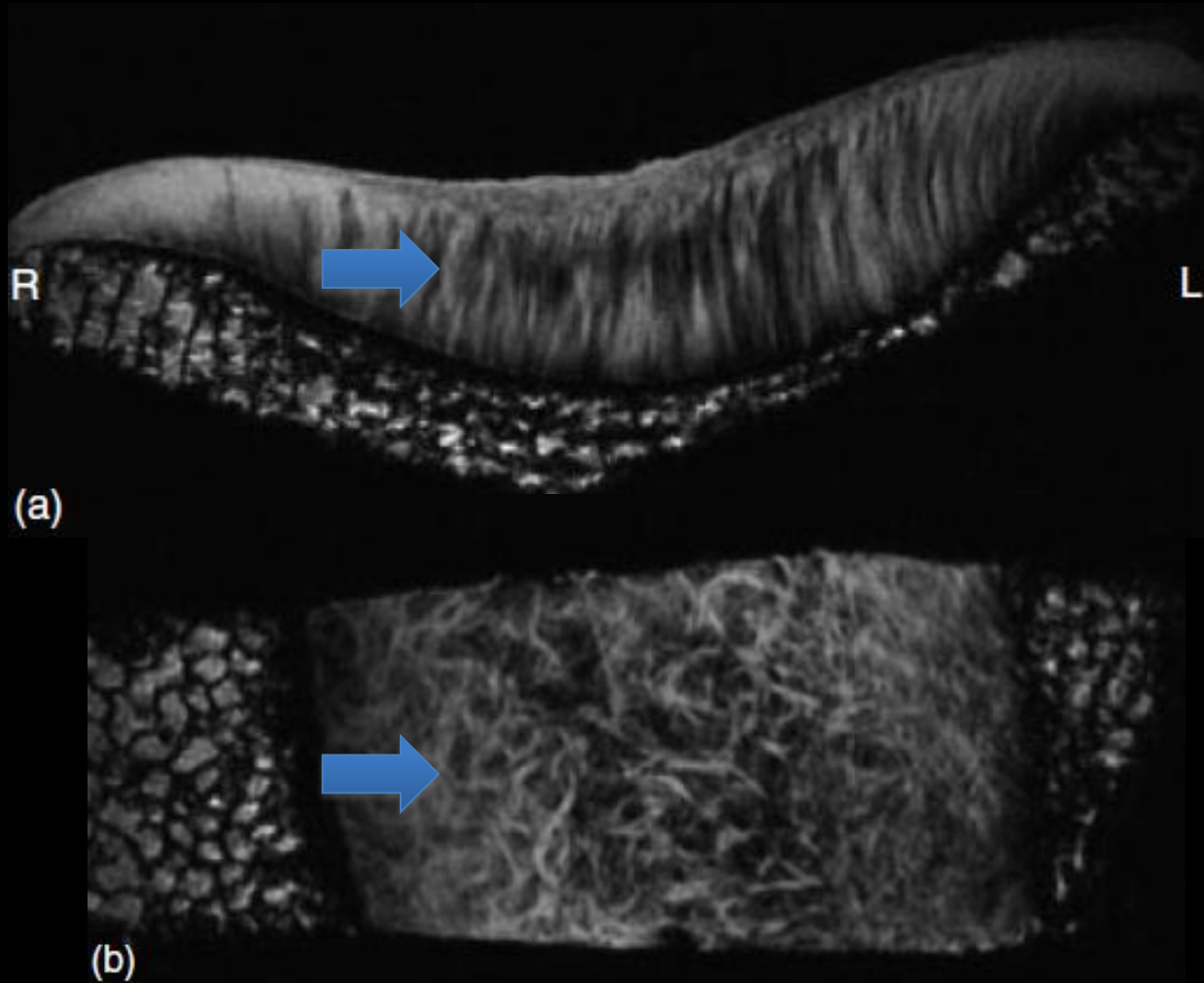


# Protocol for MRI of cartilage



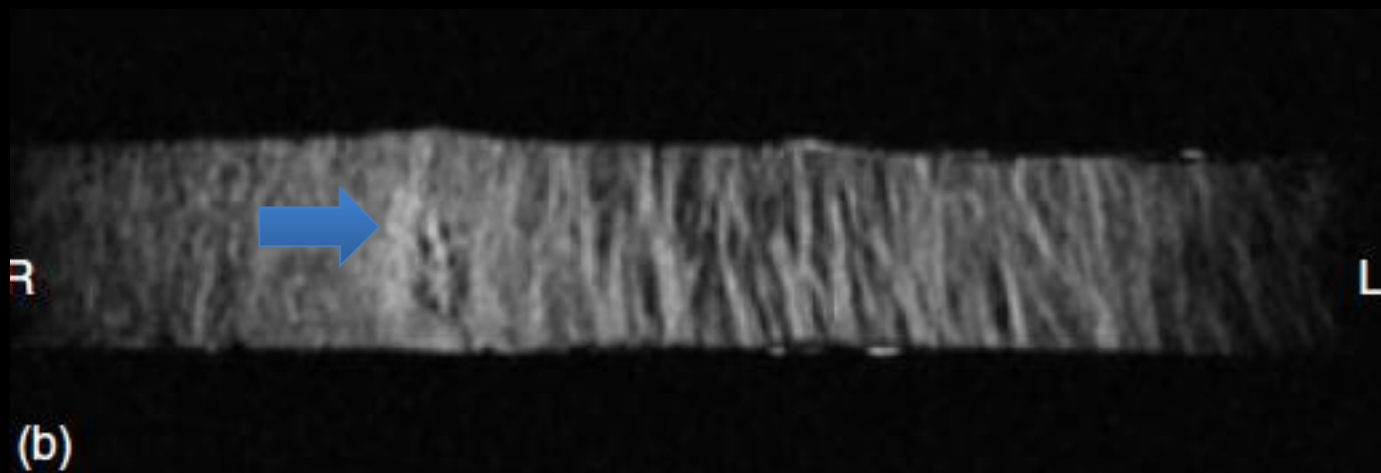
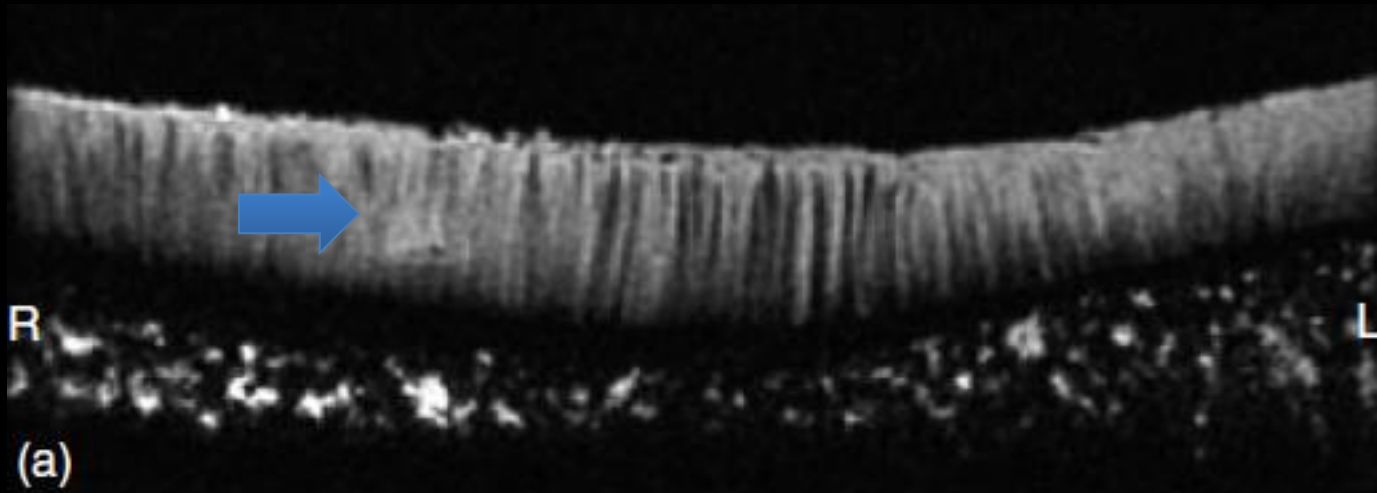
# DIR UTE

## Tibial cartilage



# DIR UTE

## Tibial cartilage



# Cartilage composition

## Extracellular matrix

### Tissue fluid

Water (65-80%)

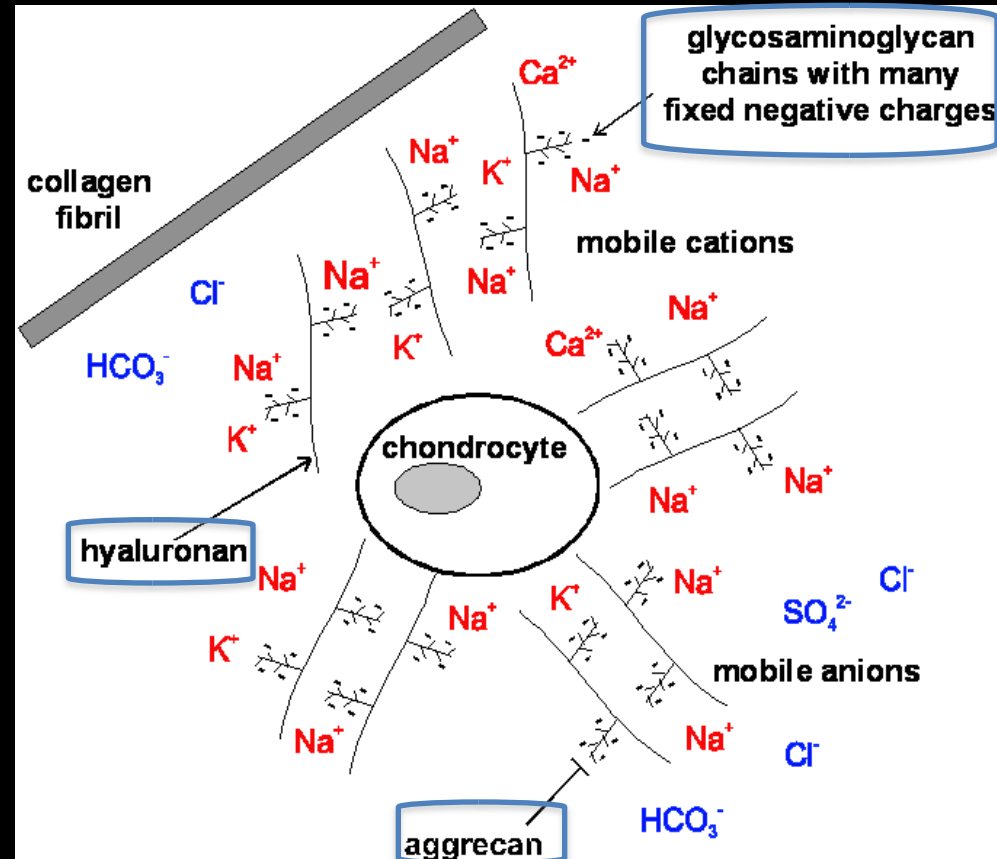
### Macromolecules

Collagen II (15-25%)

Proteoglycans (3-10%)

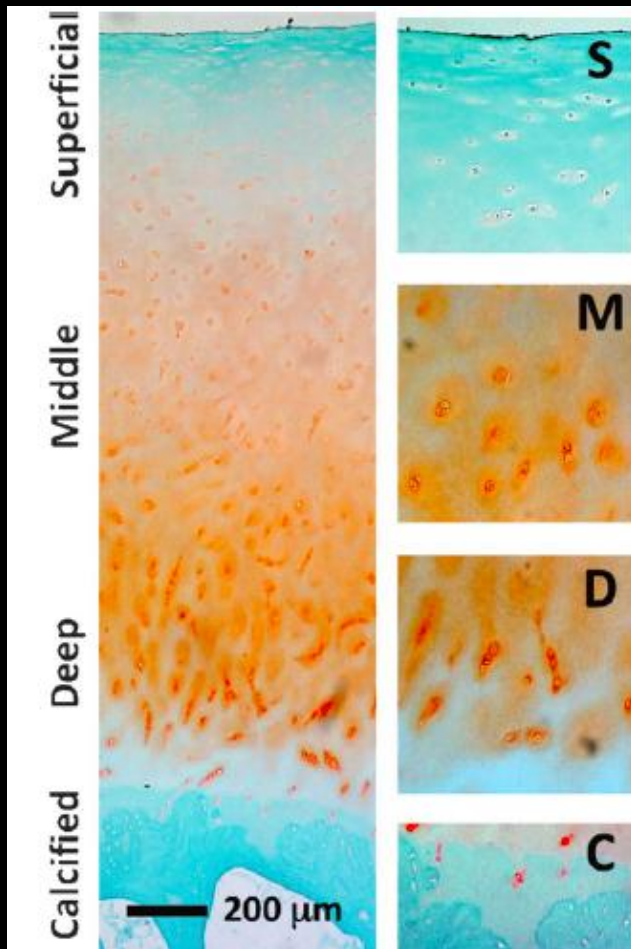
Non-collagenous proteins

## Chondrocytes (1%)



# Histology

## Articular Cartilage



GAG content,  
Comp Stiffness

Collagen  
Orientation

Chondrocyte  
Density

T2 MR Value

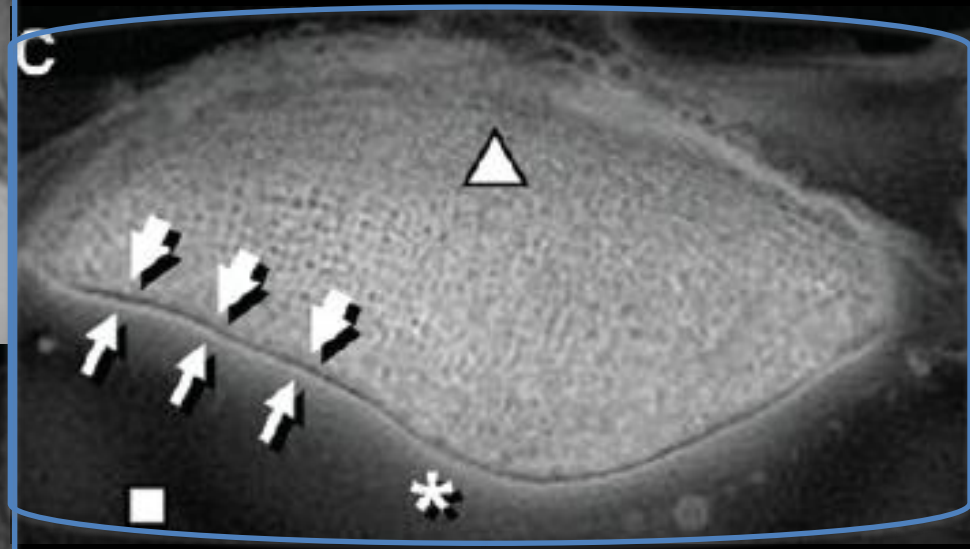
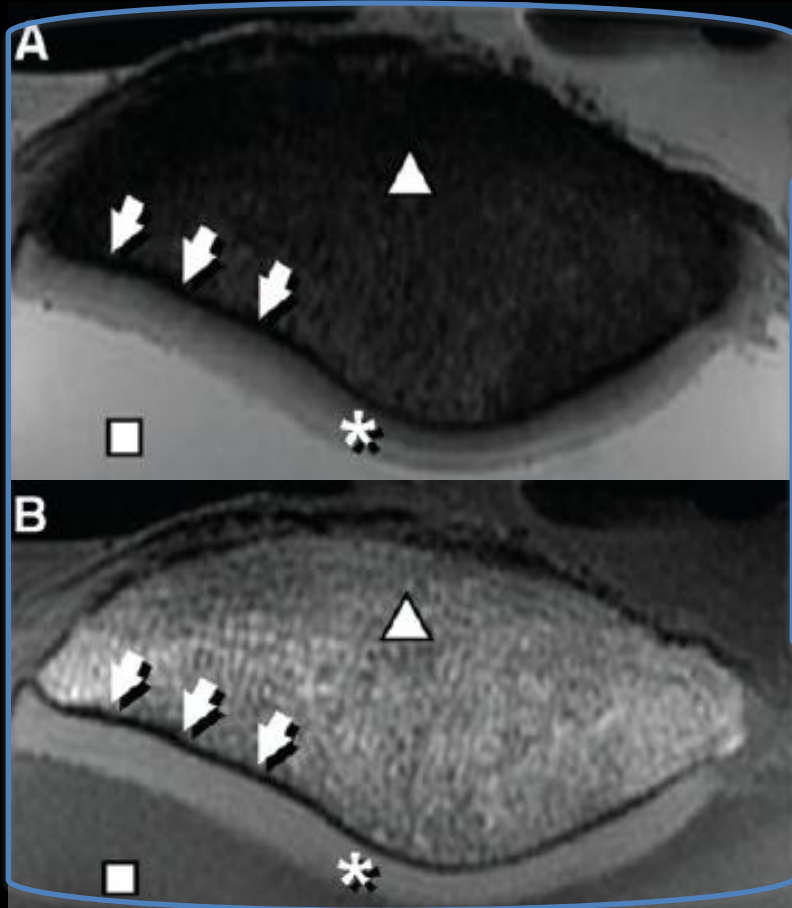
S **low** || SZ **high** med

M **med** random **med** med

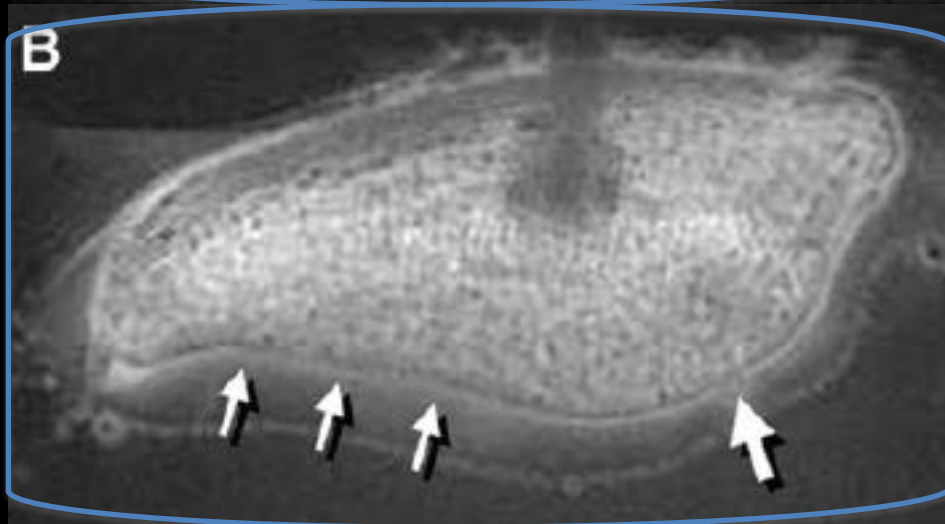
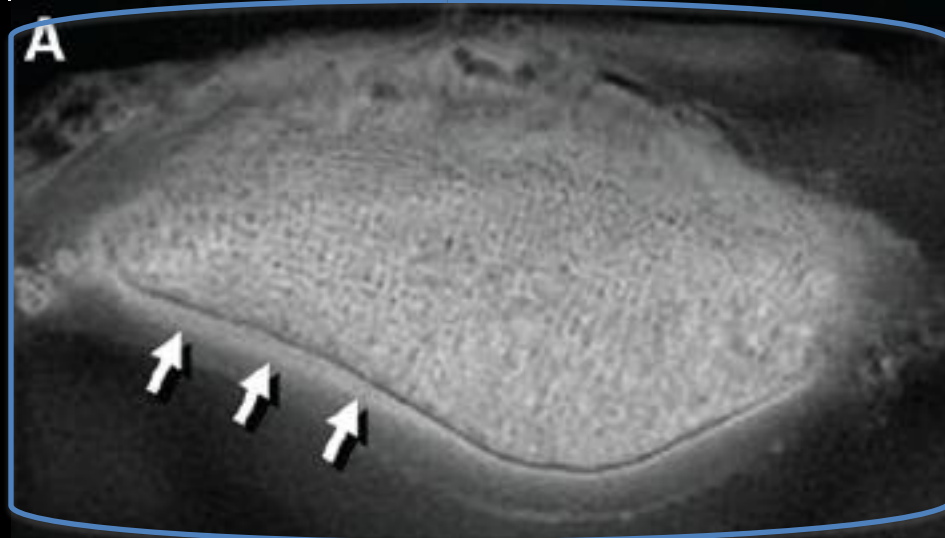
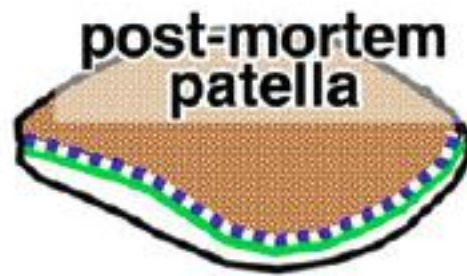
D **high**  $\perp$  SZ **med** low

C **Ultralow**

post-mortem  
patella

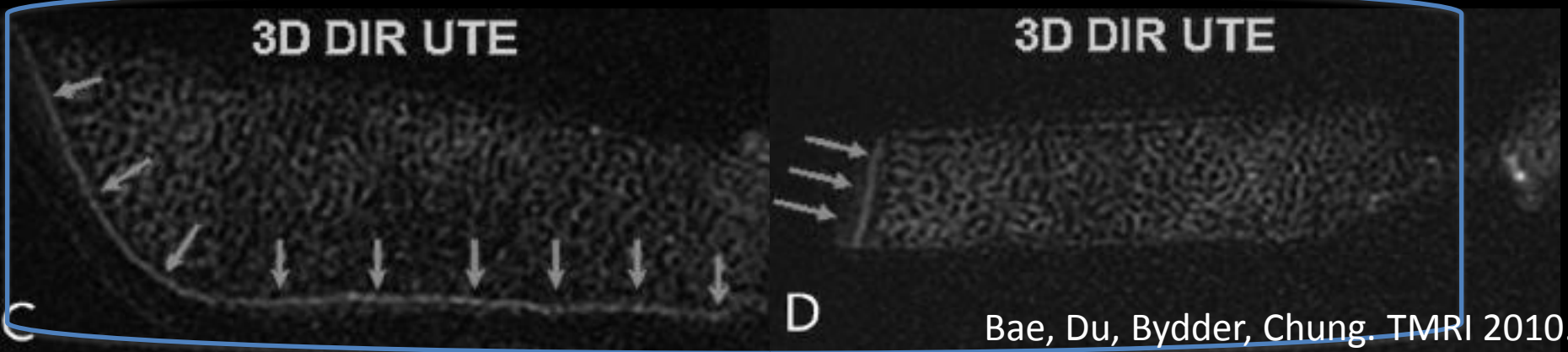
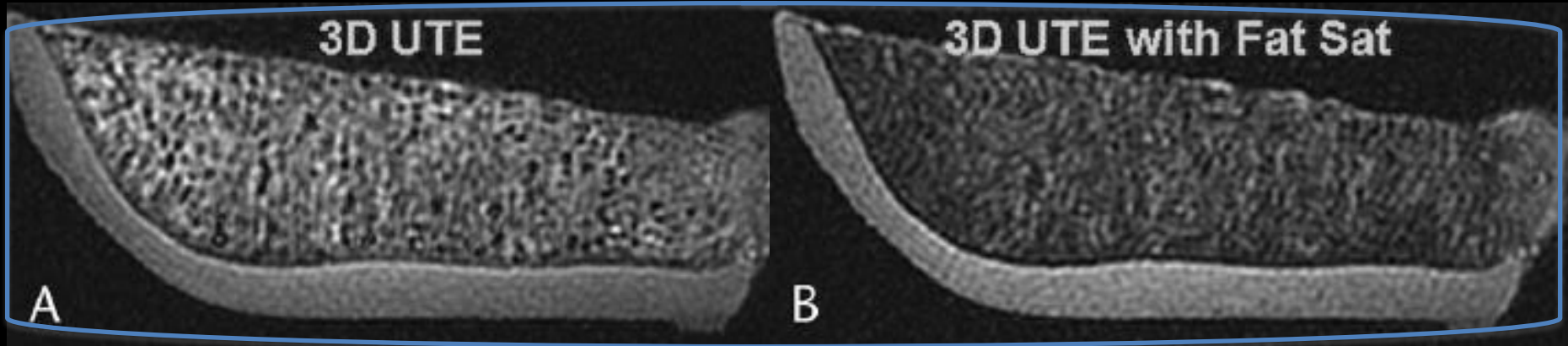






# 3D DIR UTE

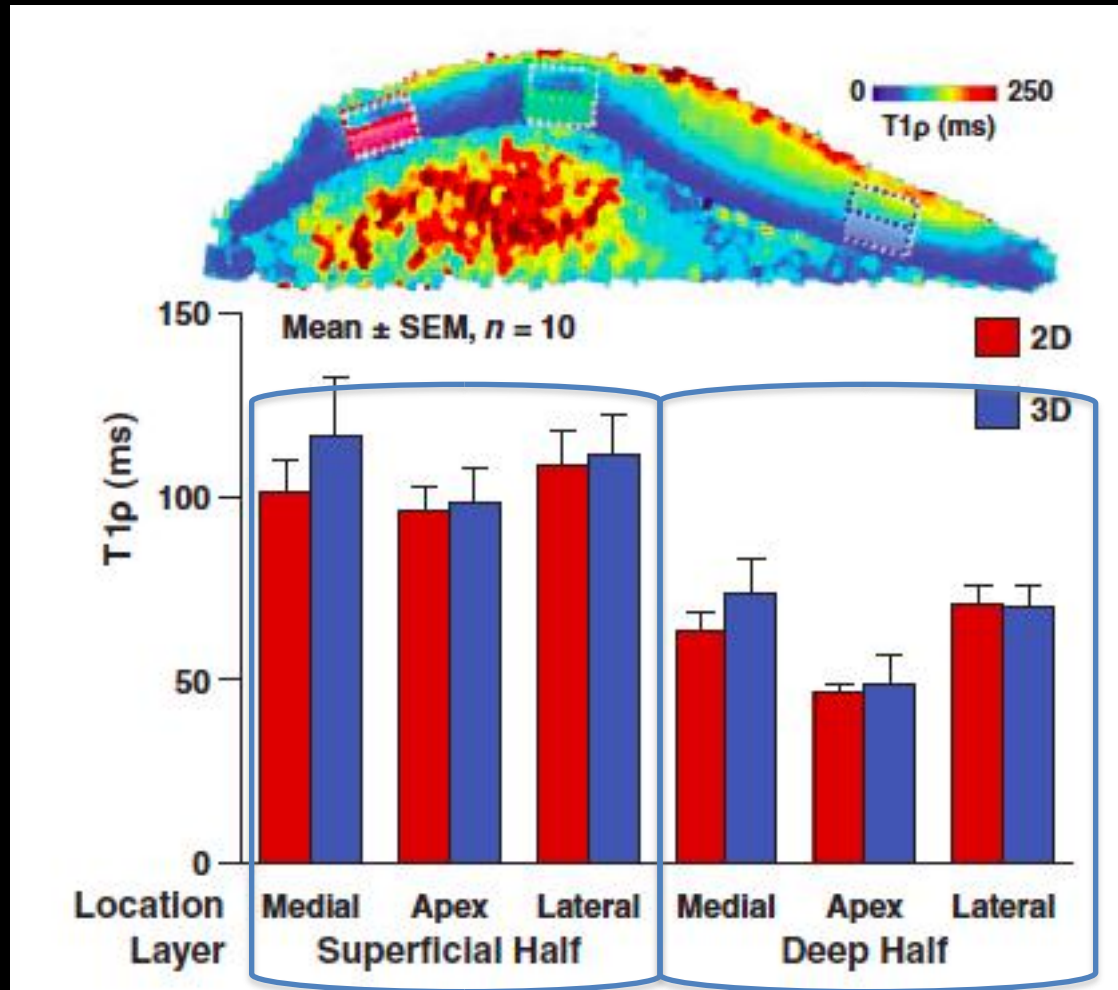
## Contrast for calcified cartilage





# UTE T1 rho

## Patellar cartilage



# UTE Clinical Applications

## Articular Cartilage

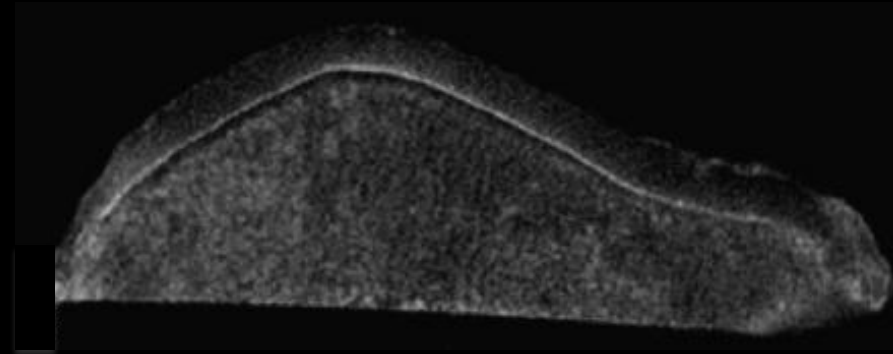
Patella

## Fibrocartilage

Intervertebral disc

Temporomandibular joint

Triangular fibrocartilage complex

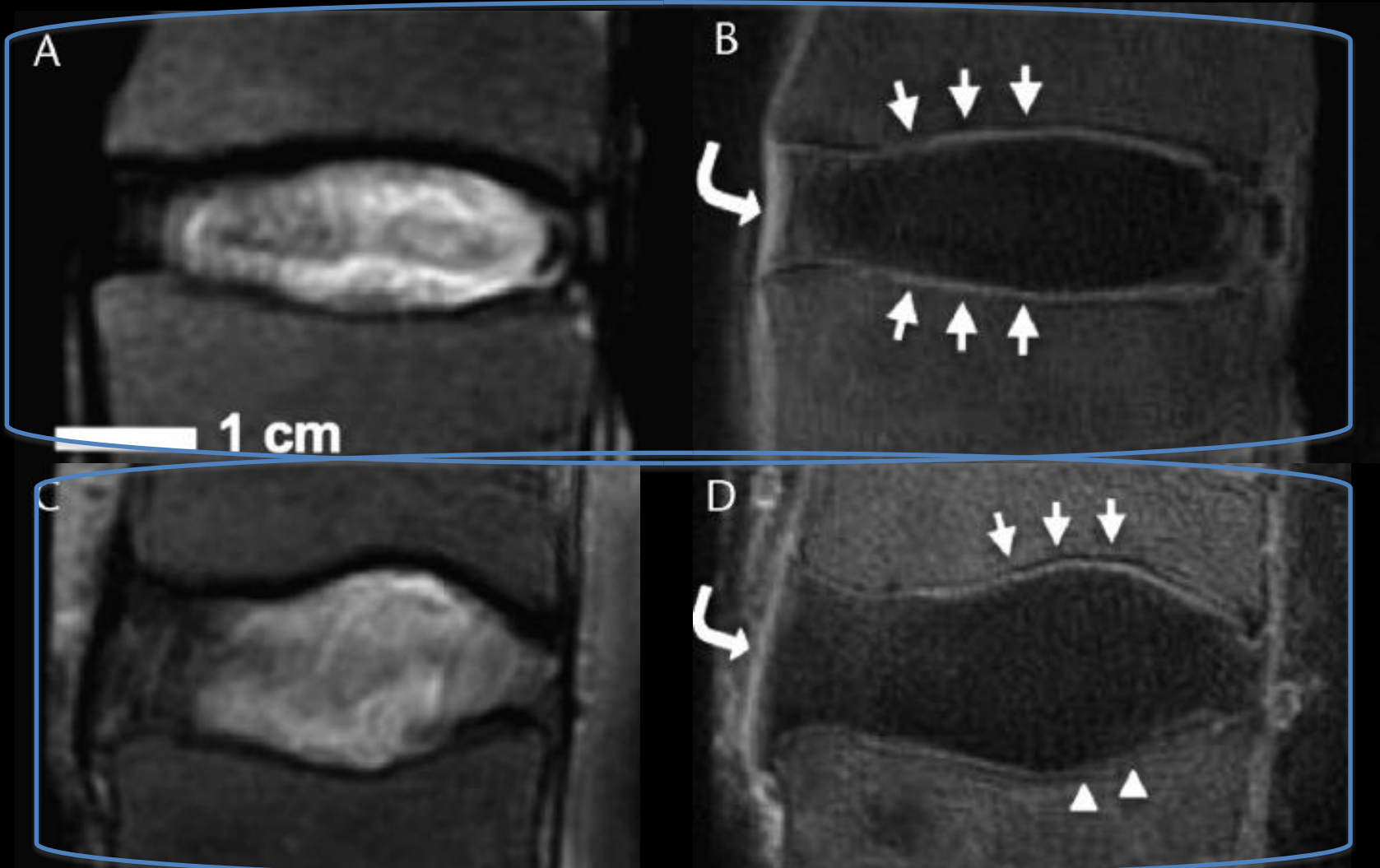


## Meniscus

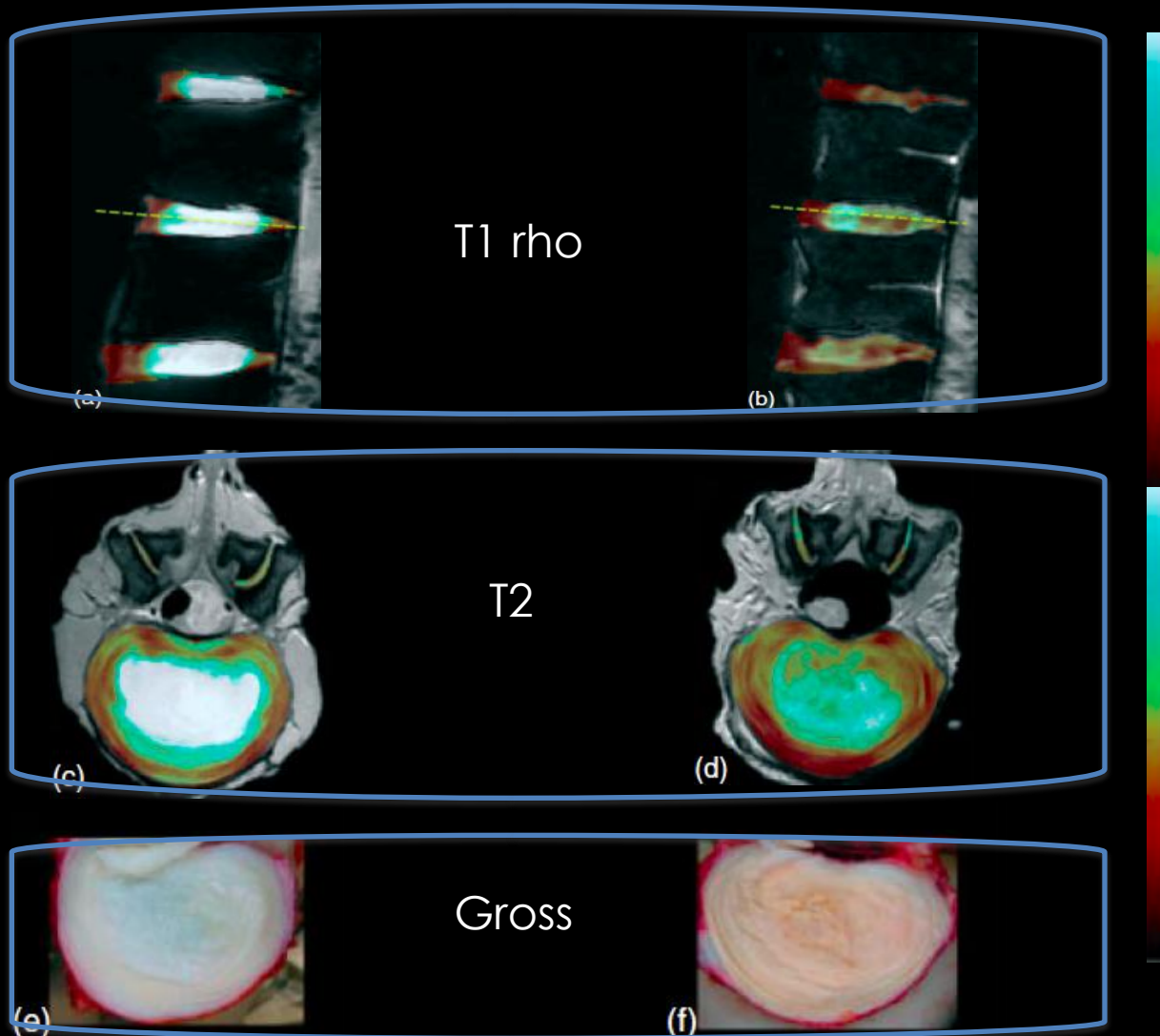


# UTE

## Cartilaginous endplates

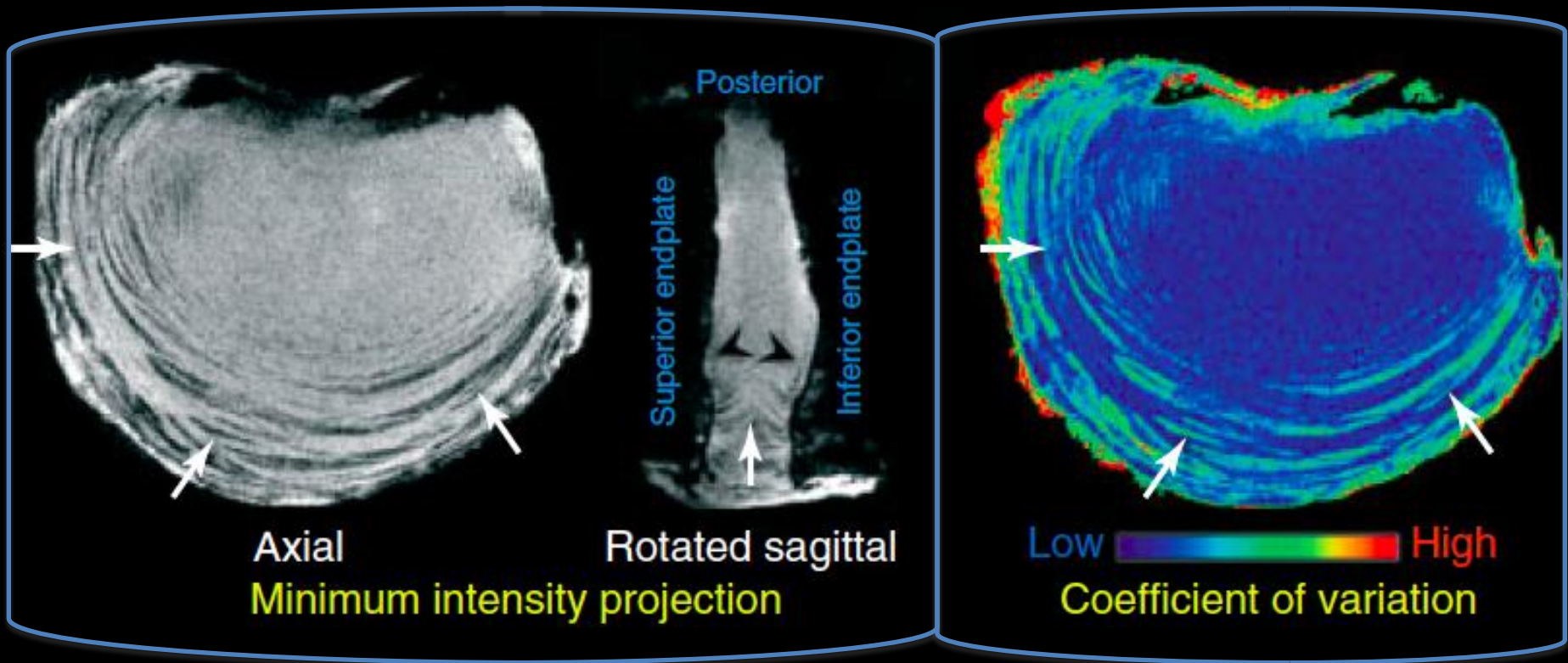


# Lumbar disc Normal vs. Degenerate



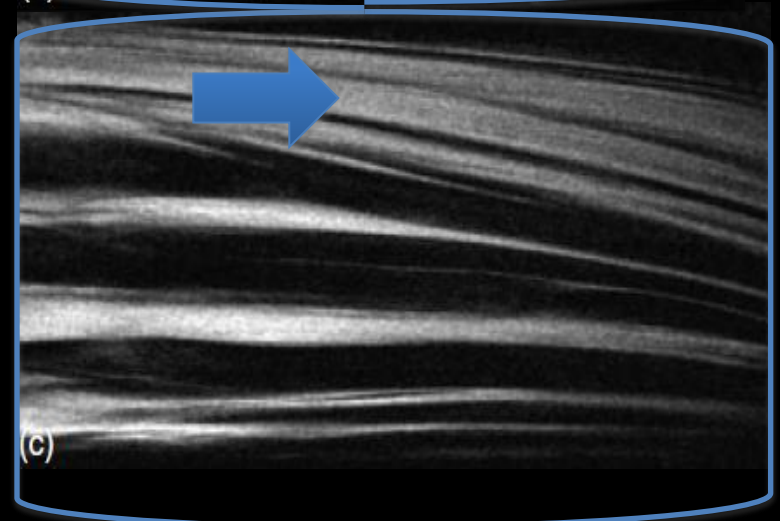
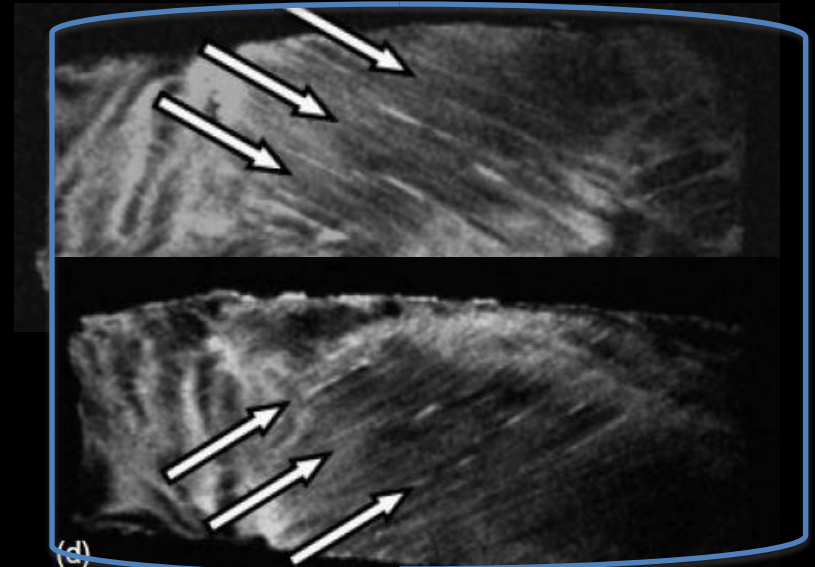
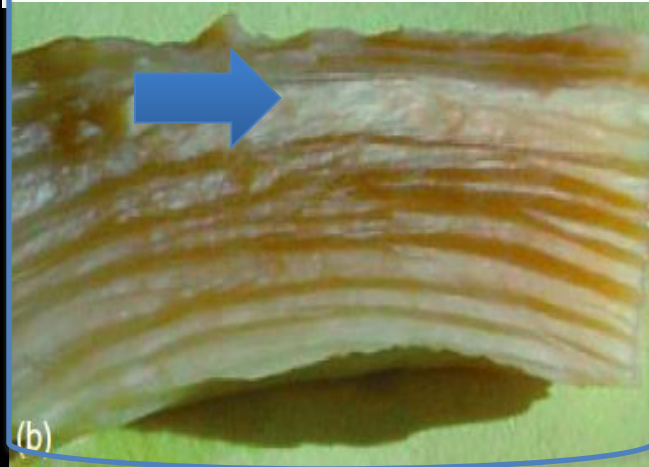
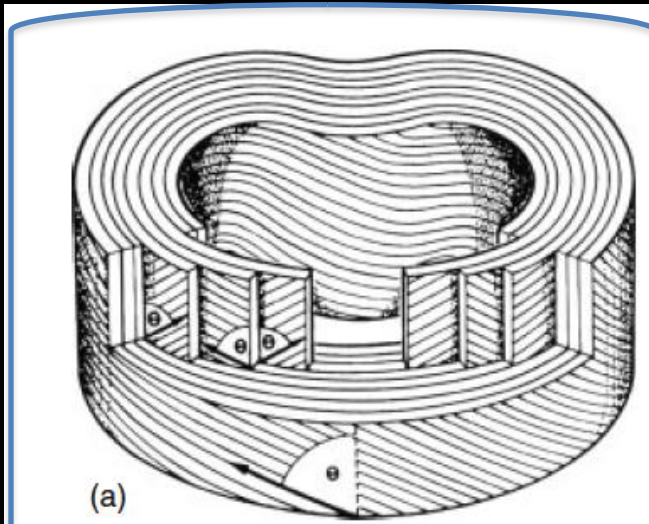
# Short TE

## Annulus fibrosus



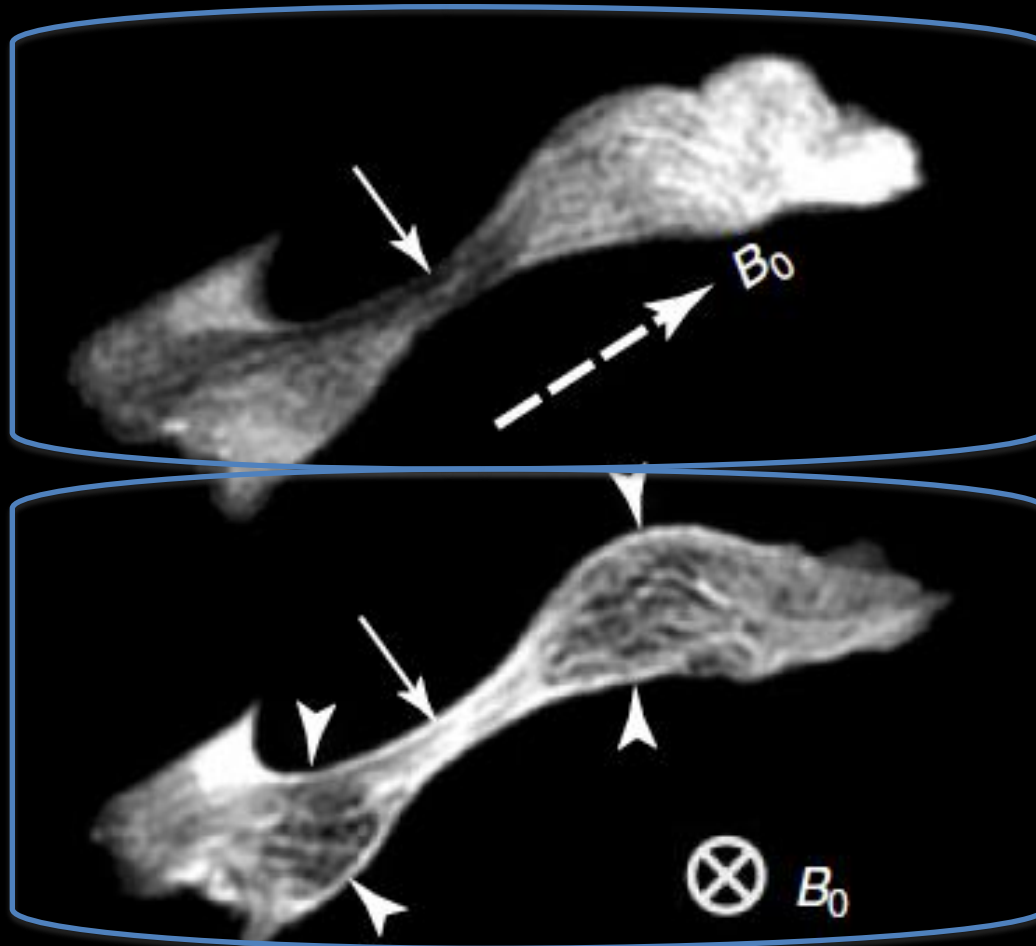


# Short TE Annulus fibrosus

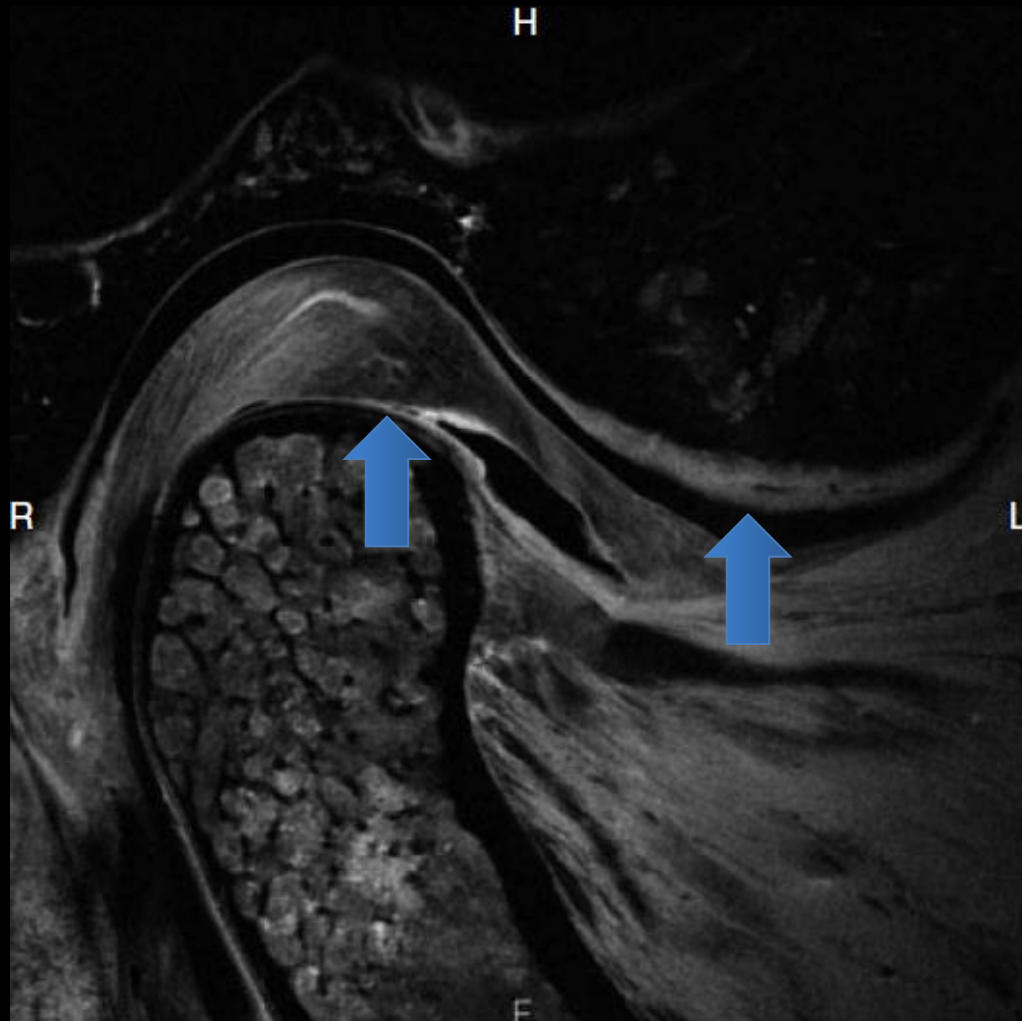


# UTE and magic angle effect

## Temporomandibular joint disc



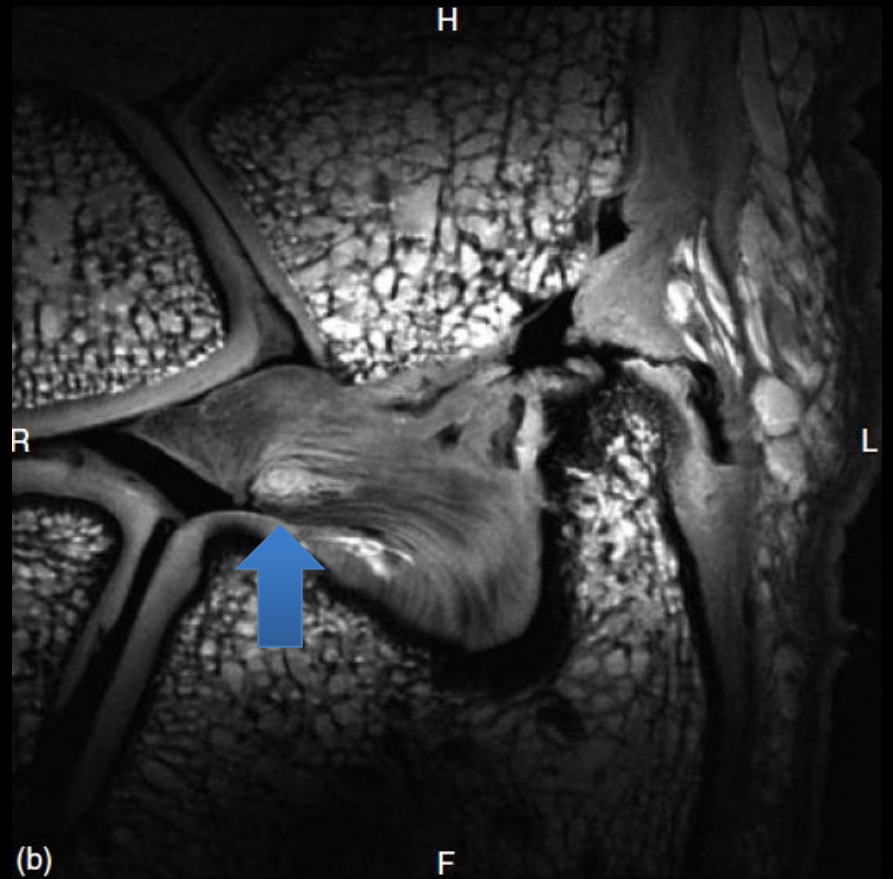
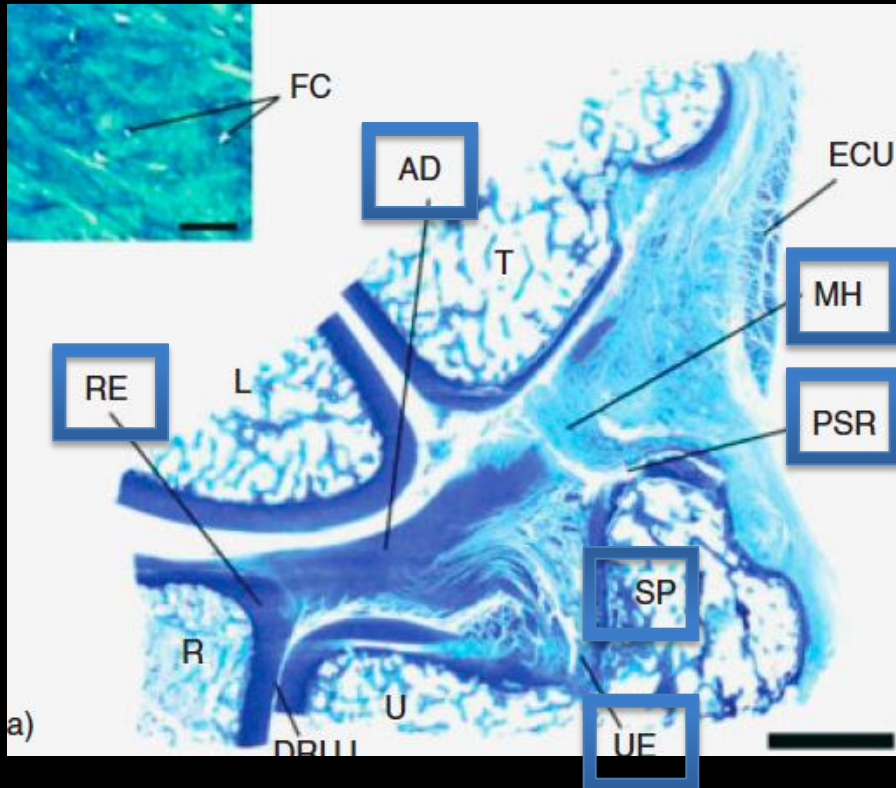
# Temporomandibular joint





# Short TE

## Triangular fibrocartilage complex



# UTE Clinical Applications

## Articular Cartilage

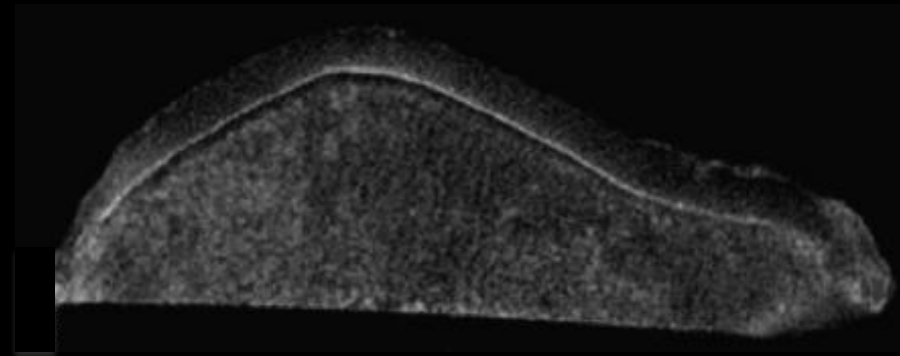
Patella

## Fibrocartilage

Intervertebral disc

Temporomandibular joint

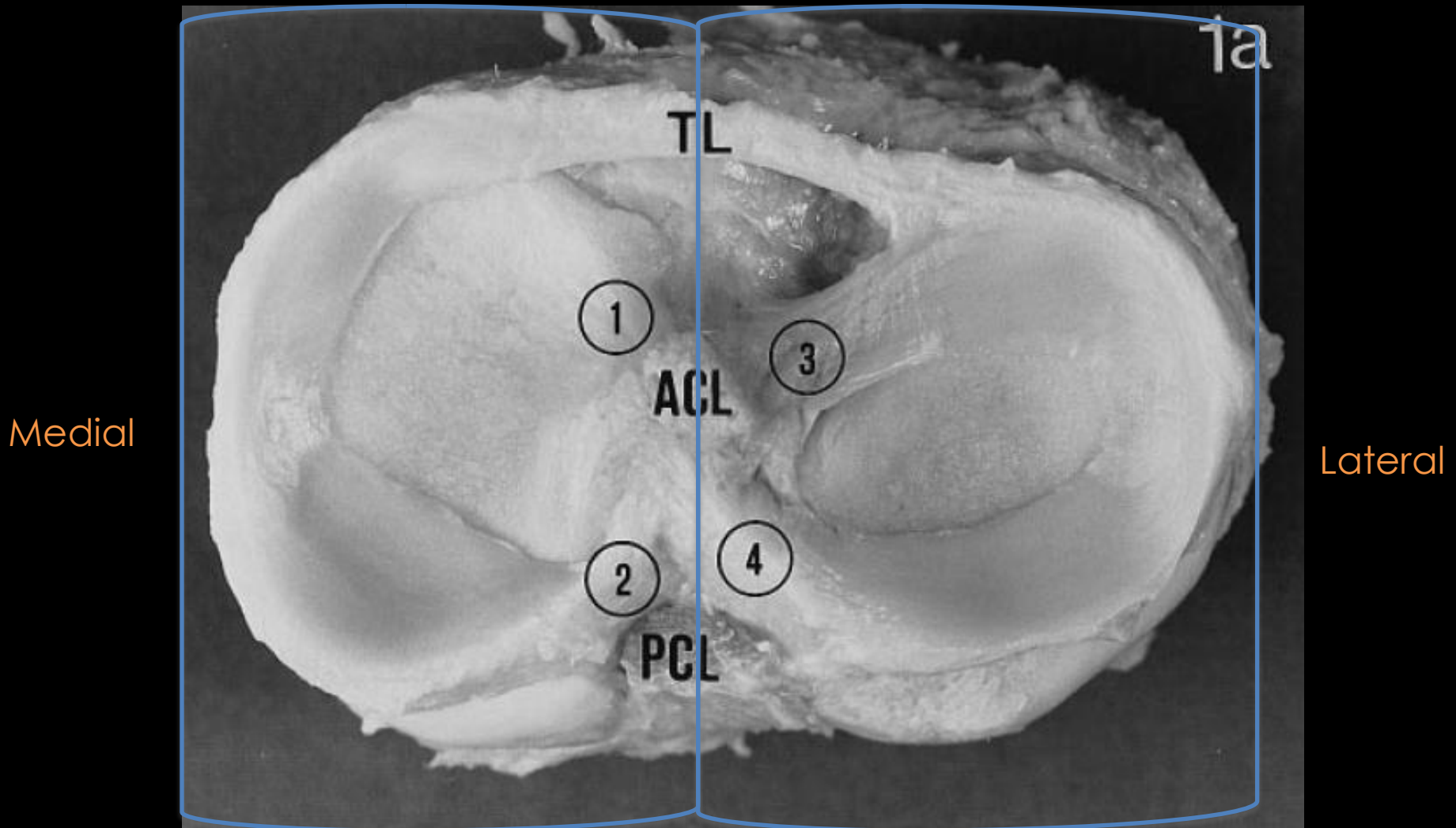
Triangular fibrocartilage complex



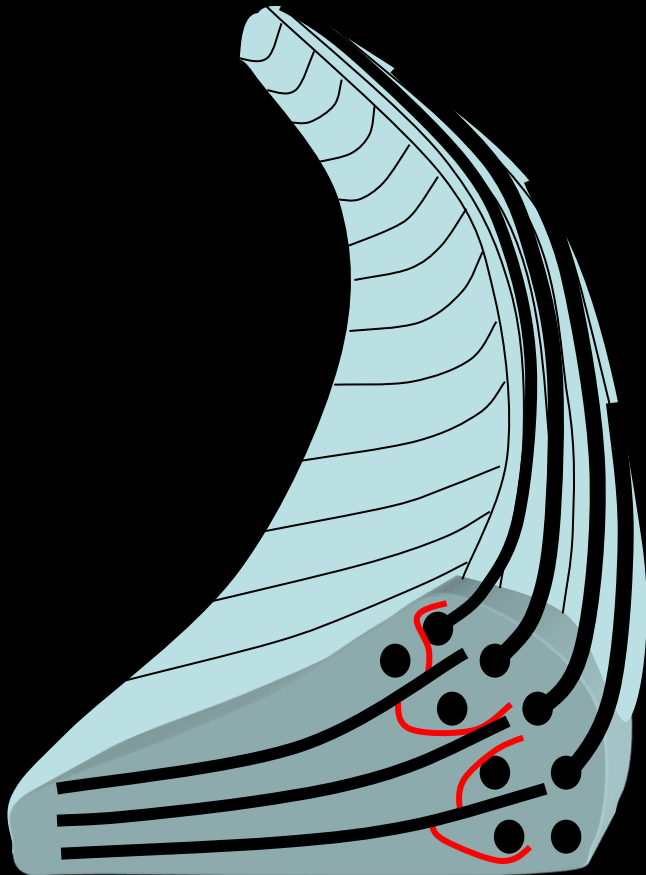
## II. Meniscus



# Menisci



# Meniscal structure



## Fibrocartilage

Water ~75 %

Collagen fibers ~20 %

Type I: ~90%

Type II: Inner portion

Proteoglycans

Inner portion

Elastin

Cells

## Collagen fiber pattern

Circumferential

Majority of fibers

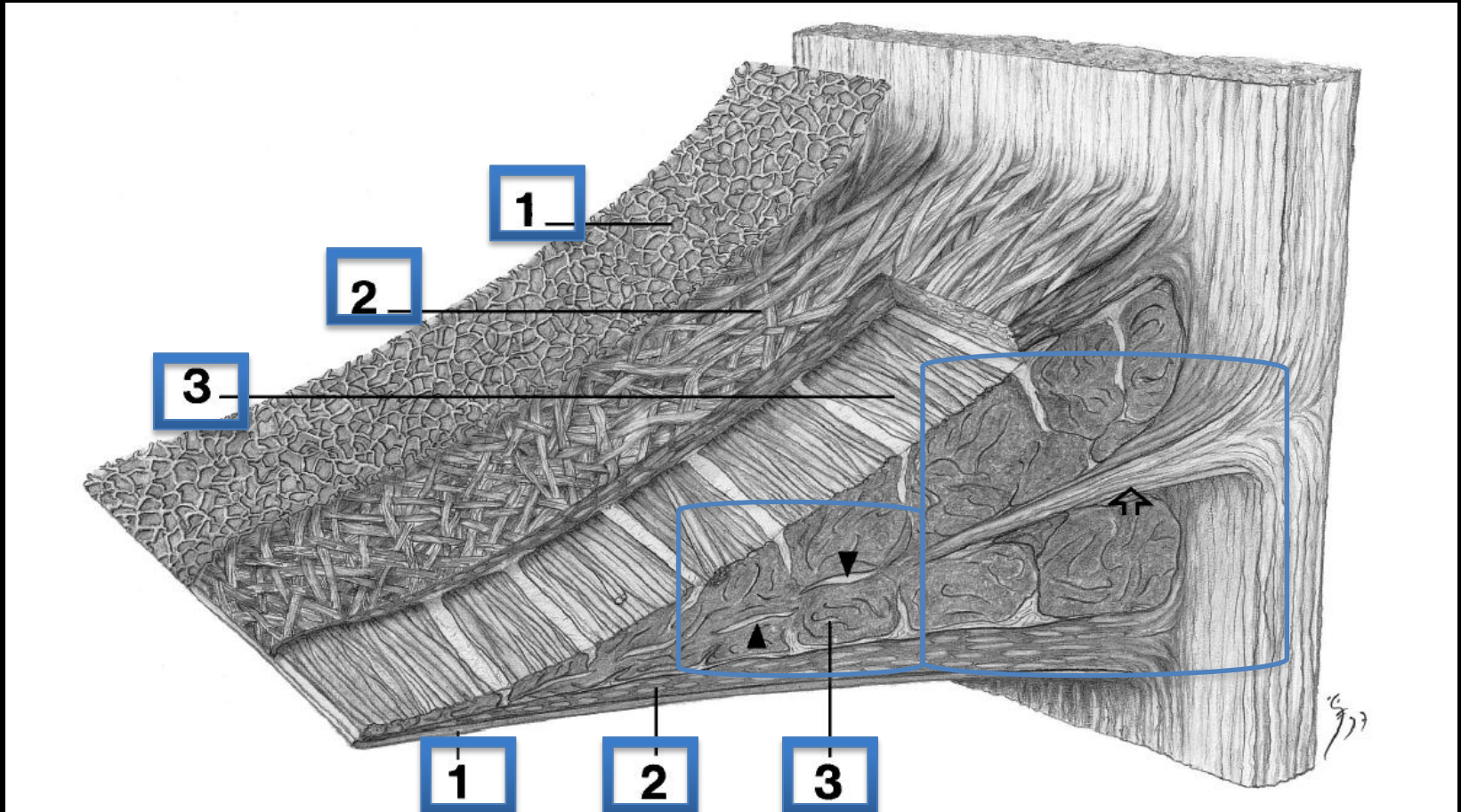
Radial

Meshwork (Perforating-Random)



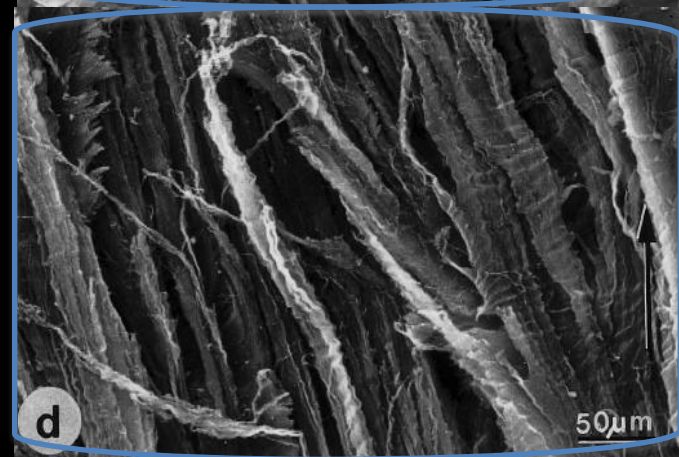
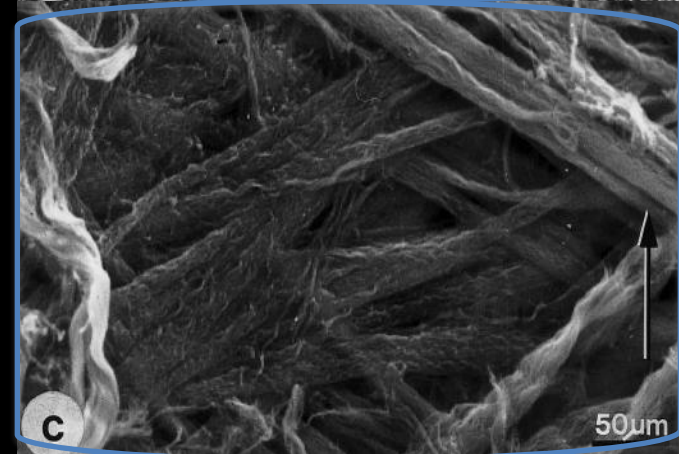
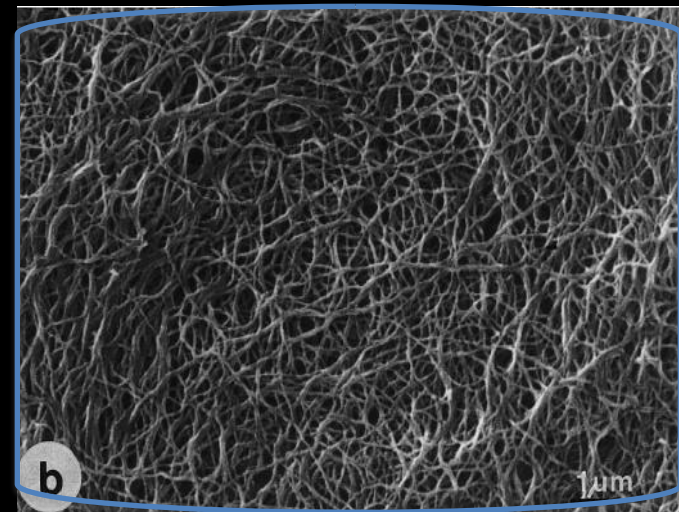
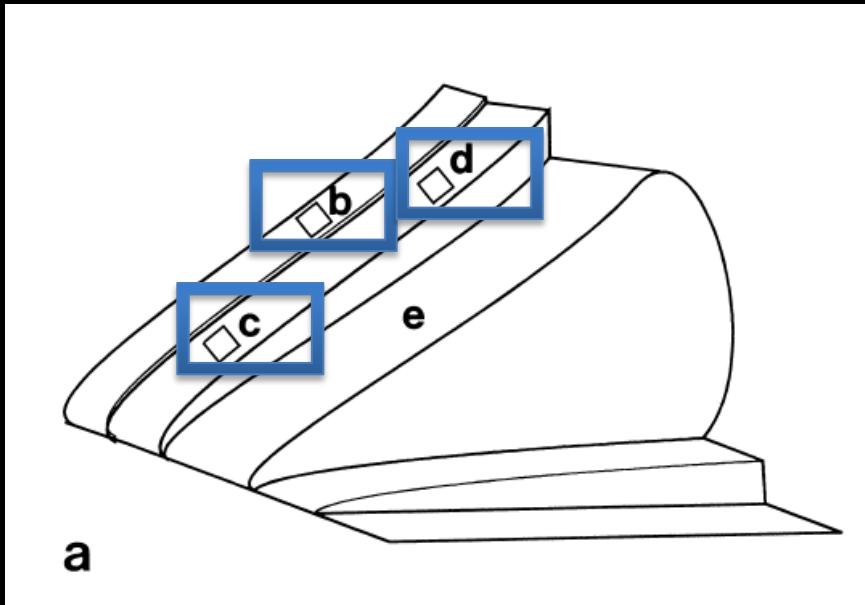
# Electron microscopy

## Meniscus cross section



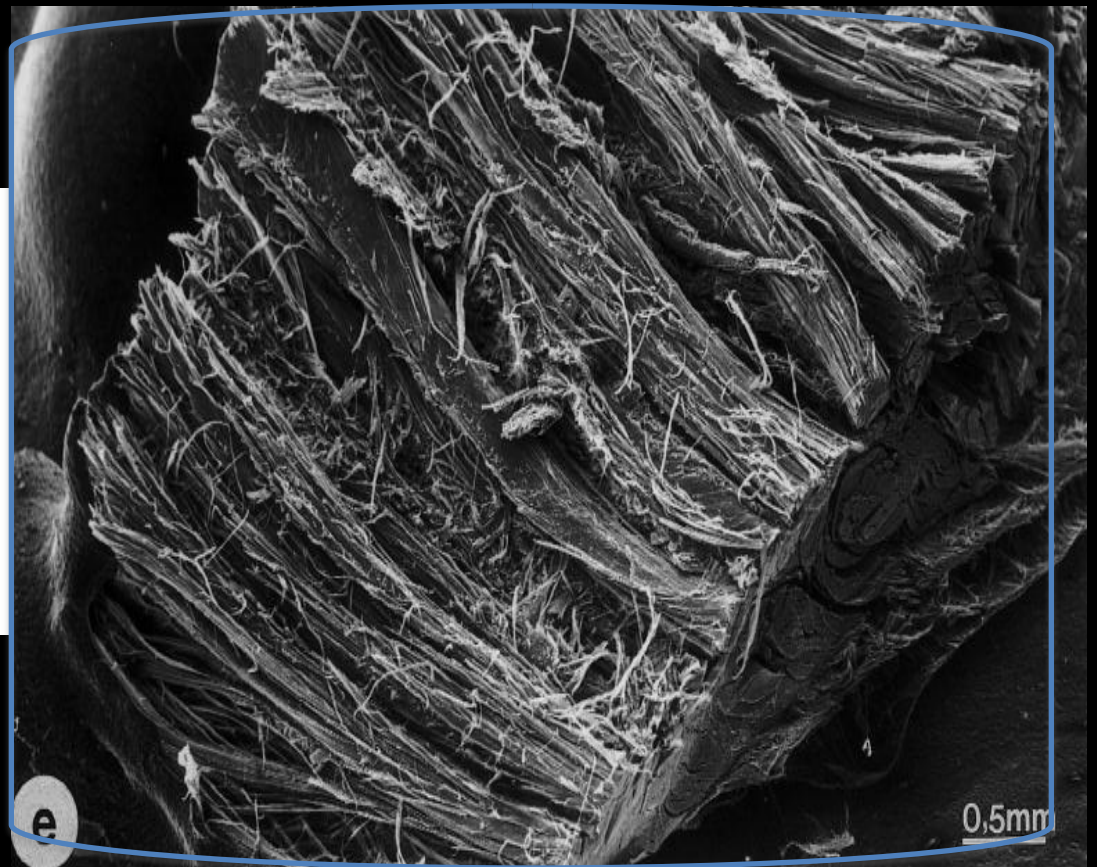
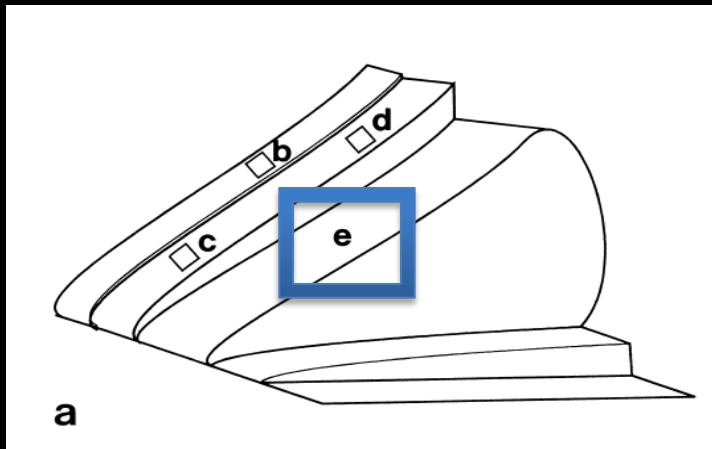
# Electron microscopy

## Posterior horn of medial meniscus



# Electron microscopy

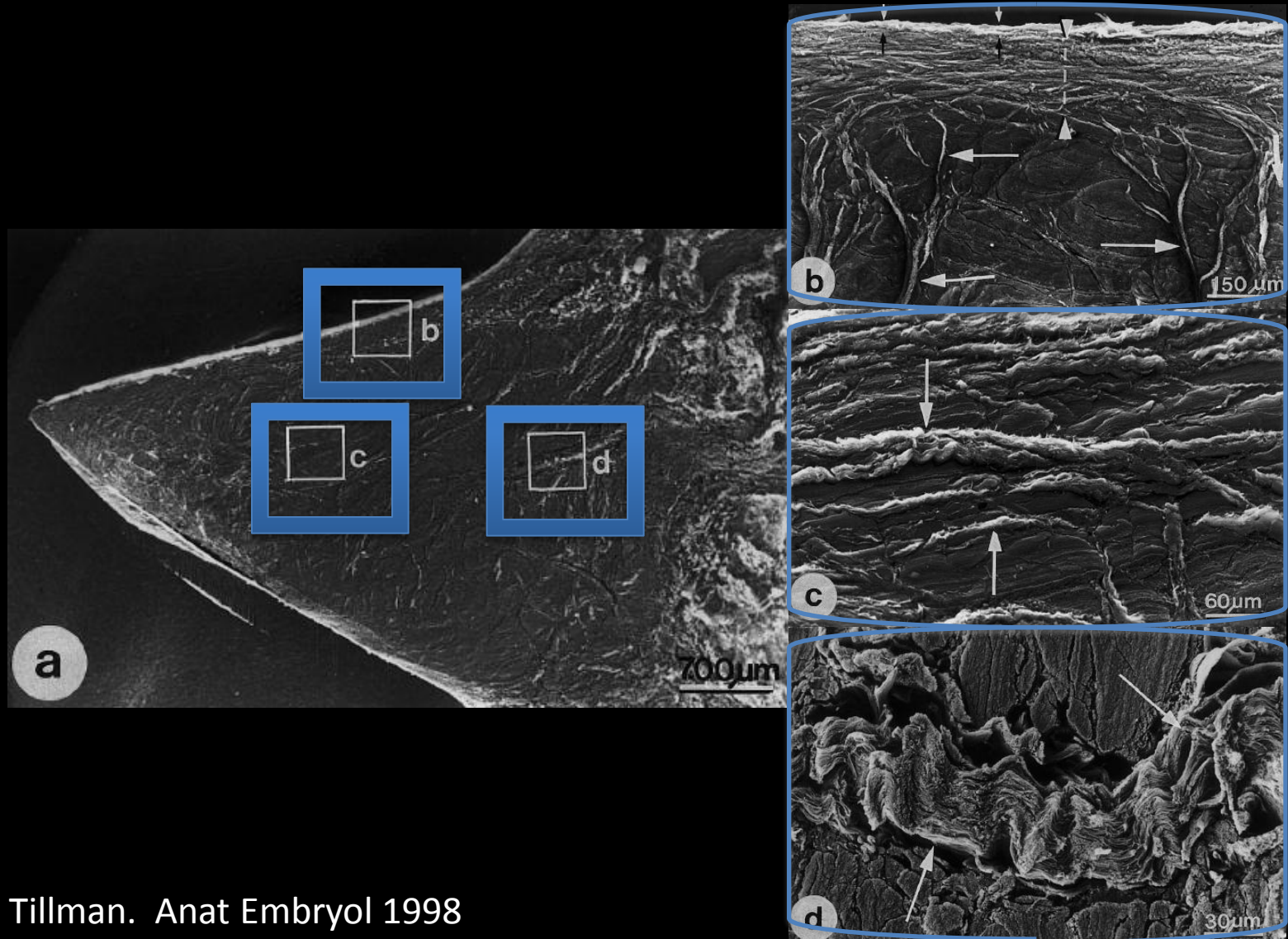
## Posterior horn of medial meniscus





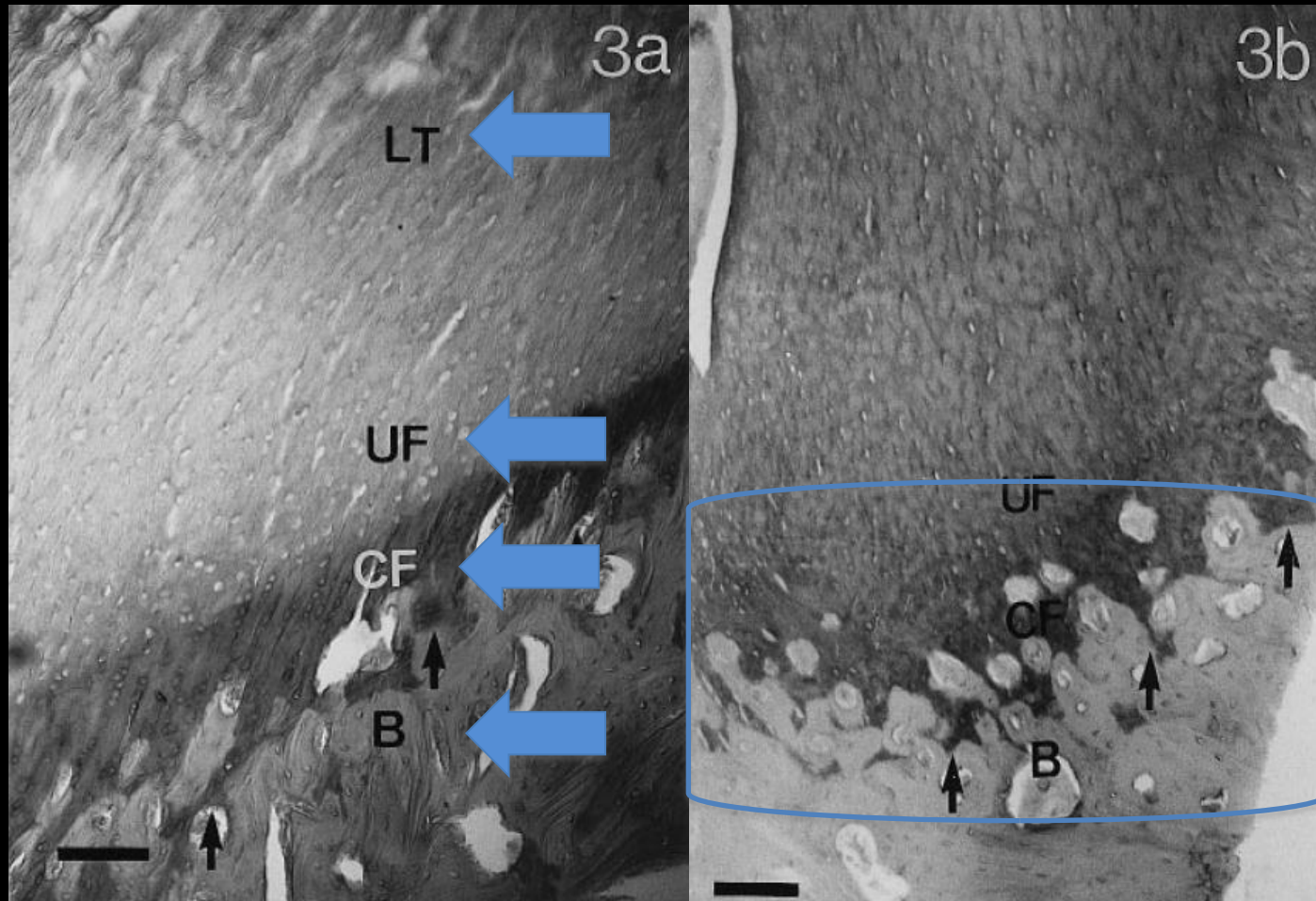
# Electron microscopy

## Posterior horn of medial meniscus



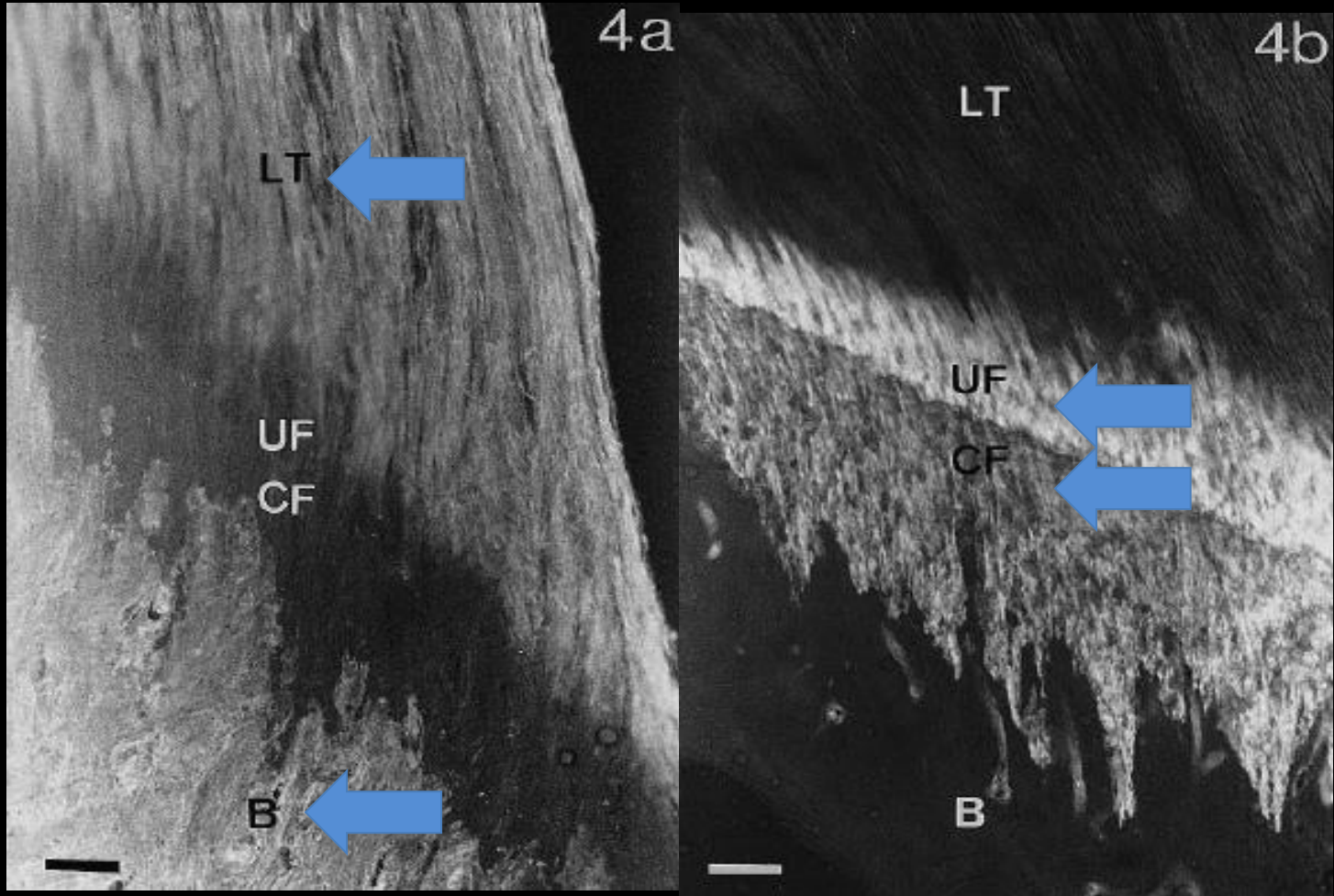
# Medial meniscus enthesis

## Tissue types



# Medial meniscus enthesis

## Type 1 vs Type 2 collagen



# UTE Clinical Application

Novel MRI techniques can be utilized to quantify microstructural changes.

UTE T2\*

UTE T1 rho

Early detection and quantify response to treatment

# Case presentation

## Clinical history

24 year old male with knee pain



The bizarre world  
of North Korea's  
new dictator

How  
dangerous  
is Iran?  
BY JOE KLEIN

What would  
Steve do?  
CEO lessons from  
the Apple founder

# TIME

Since 1956 no one  
has scored more  
points in the first  
five starts than  
Jeremy Lin.  
That's more than  
Jordan. More  
than LeBron.

# LINSANITY!

Jeremy Lin lights up the NBA  
By Sean Gregory



**BIG BLUESHIRTS** With the Yankees and Mets in Yankee County this week, 7-18-08

**The Best Sports In Town**



**LINNING STREAK**

Legend of Harvard here grows as Knicks win 3rd straight

**Everyone Wins a Prize! Thursdays**

**EMPIRE CITY** THE CASINO

**DAILY NEWS**



Jeremy, Knicks dunk Wizards

**LIN YOUR FACE!**

**WHO IS THE MOST HATED?**

Pages 14-15

**HOW GIANTS CAN DO IT AGAIN: P. 52-54**

**GRUZZ: THROW ME THE MONEY**

**The Sports In Town**



**MAY THE BEST MAN WIN**

Jeremy vs. Kobe tonight at MSG

**POWER** PLAY \$310 MILLION

**DAILY NEWS**

Forget about Kobe, Knick sensation headlines Garden tonight



**THE MIGHTY LIN**

**EXTRA HELPING**

**SUPER SpO SATURDAY**



Jeremy scores 38 in Knicks win over Kobe, Lakers

**LINGREDIBLE!**

Receive \$10 Free Play! When you join the Empire Club. Sign up today, IT'S FREE!

**EMPIRE CITY** THE CASINO

**DAILY NEWS**



**COME BACK LIN!**

Jeremy's decisive free throw lifts Knicks



# Jeremy Lin has torn meniscus

ESPN.com news services

Updated: April 1, 2012, 2:46 PM ET

NEW YORK -- [Jeremy Lin](#) will have left knee surgery next week and will miss six weeks, likely ending his amazing breakthrough season.



**ESPN** NEW YORK





## Knicks Blog

# Knicks' Lin won't play with knee at '85 percent'

By MARC BERMAN

Posted: 11:44 AM, May 9, 2012

---

COMMENTARY

# Knicks must let Jeremy Lin go

Nothing personal – he's just not worth the money. Let the sanity begin!

By [Stephen A. Smith](#) | ESPNNewYork.com

Updated: July 17, 2012, 12:16 PM ET

[Jeremy Lin](#) has been all about the money since the day he burst onto Broadway.

Lin was about the Benjamins when Linsanity made the cover of Time magazine. He definitely was overcome by dollar signs when he wouldn't play at "85 percent" for the [New York Knicks](#) in the playoffs, and it was all about the bottom line once free agency arrived.

Quantitative MRI can quantify response to treatment

Tear

Degeneration

Calcification



R.I.P.  
LINSANITY

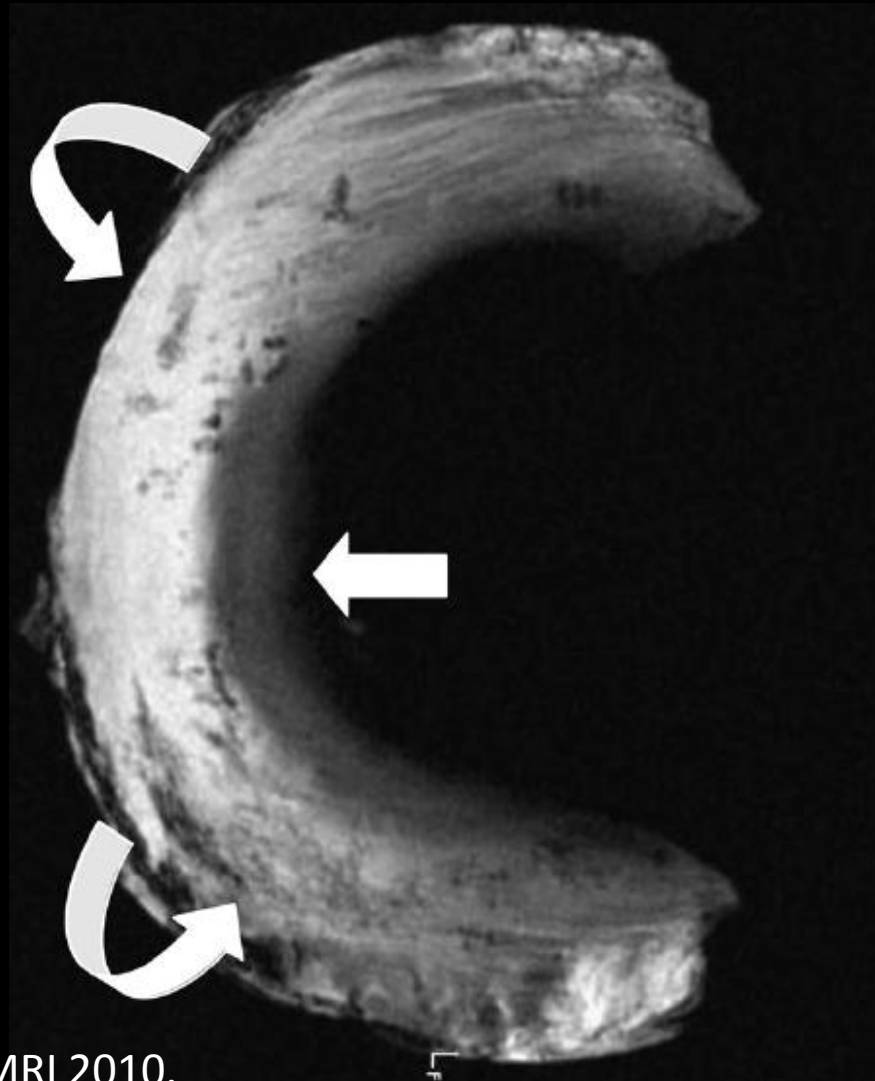
BRIEFLY BELOVED  
BROADWAY SMASH HIT

FEBRUARY 4, 2012  
TO  
MARCH 14, 2012

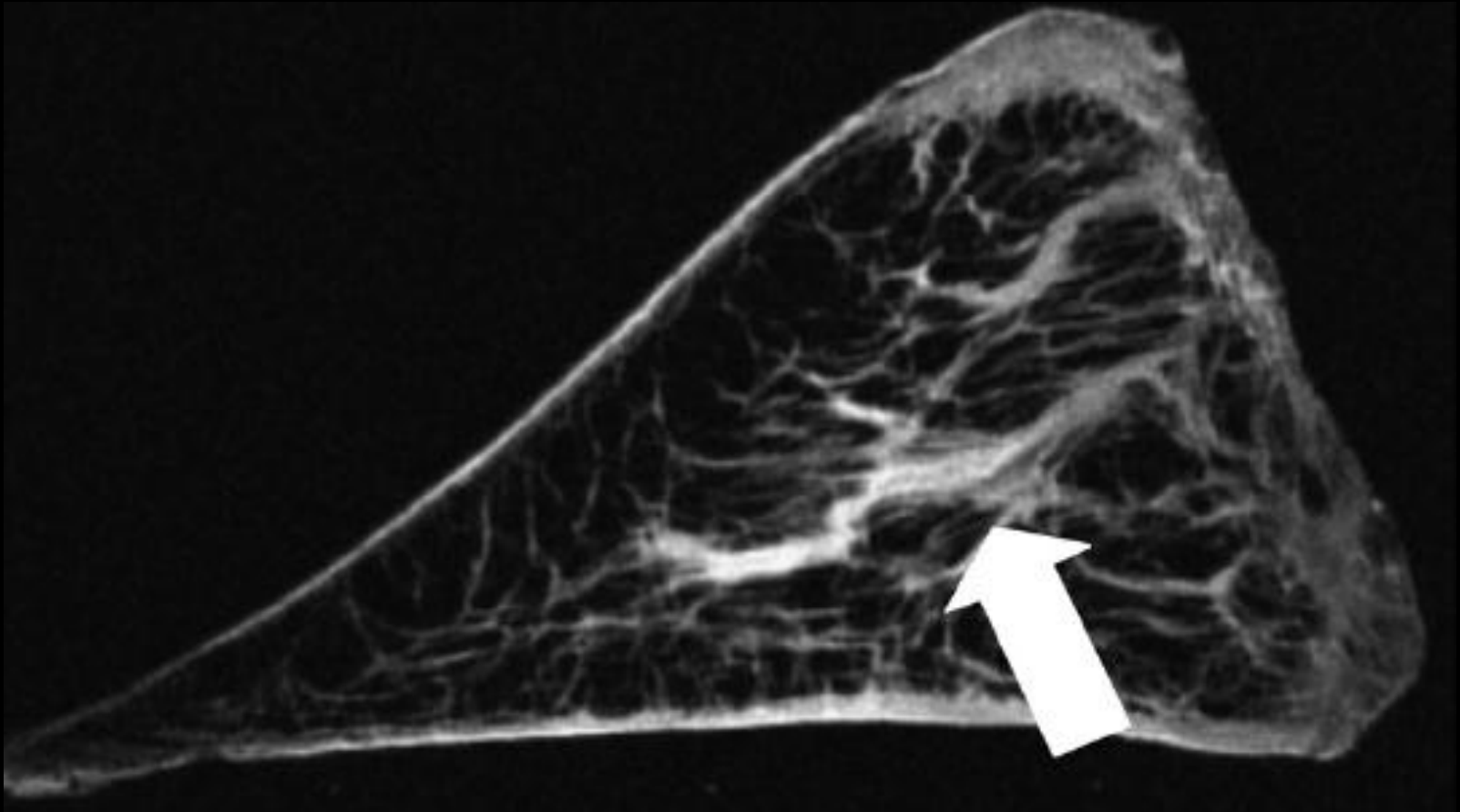
**Woodson: This is the Melo  
and Amar'e show now**

New Knicks coach Mike Woodson made it clear at practice yesterday that the Jeremy Lin era is history and that Carmelo Anthony and Amar'e Stoudemire will become the focus of the team's offense. BERMAN / PAGES 112-113

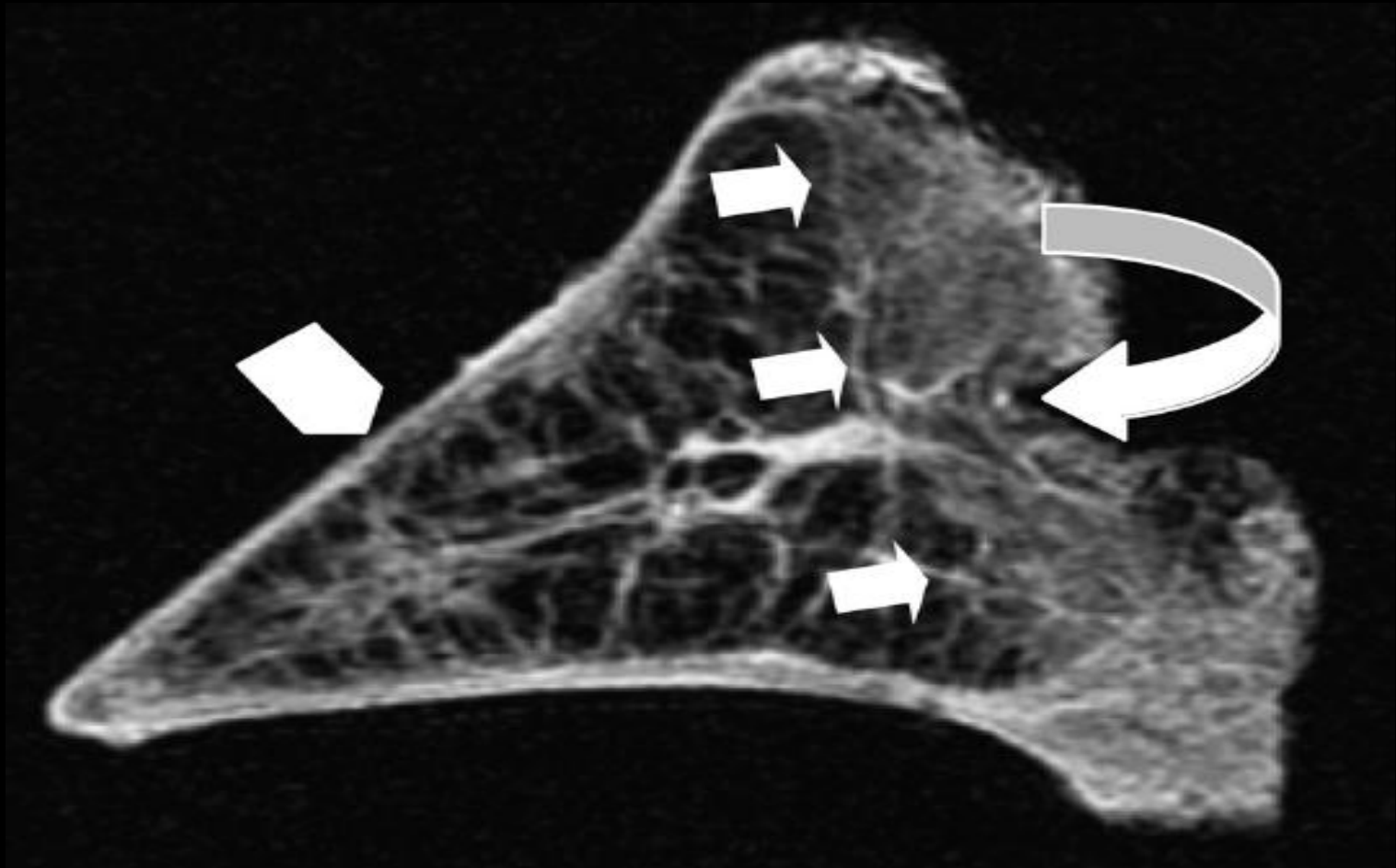
# UTE Meniscus



# Short TE Meniscus



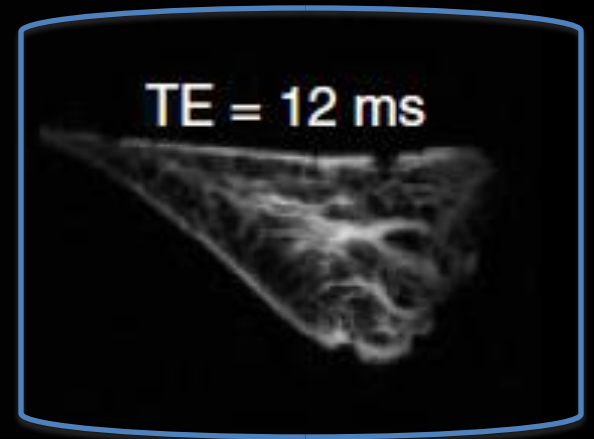
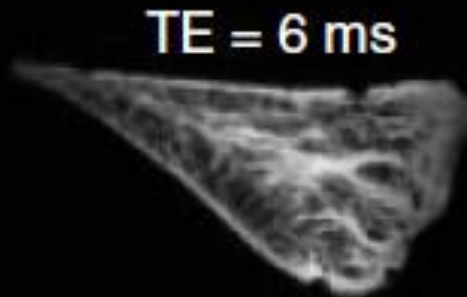
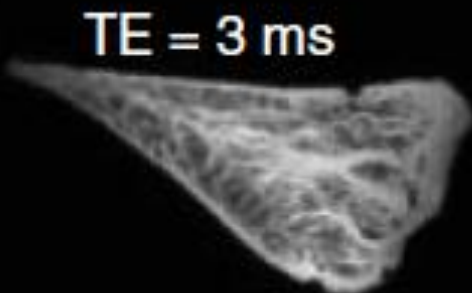
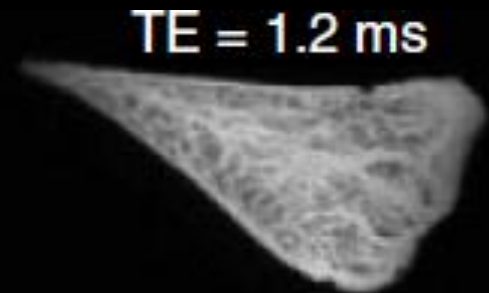
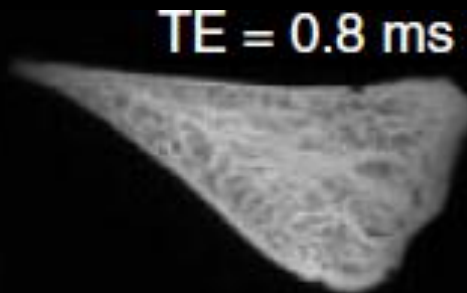
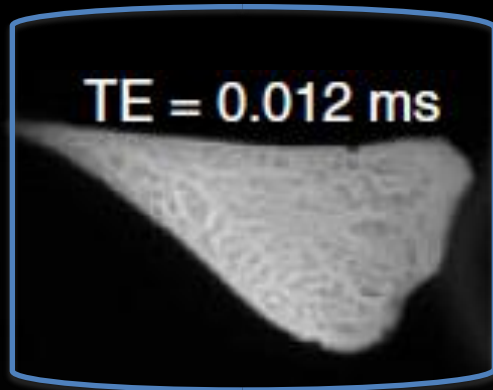
# Short TE Meniscus





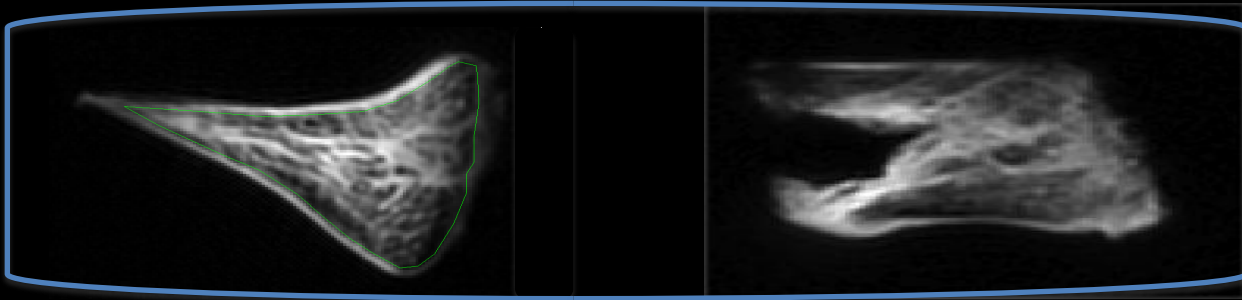
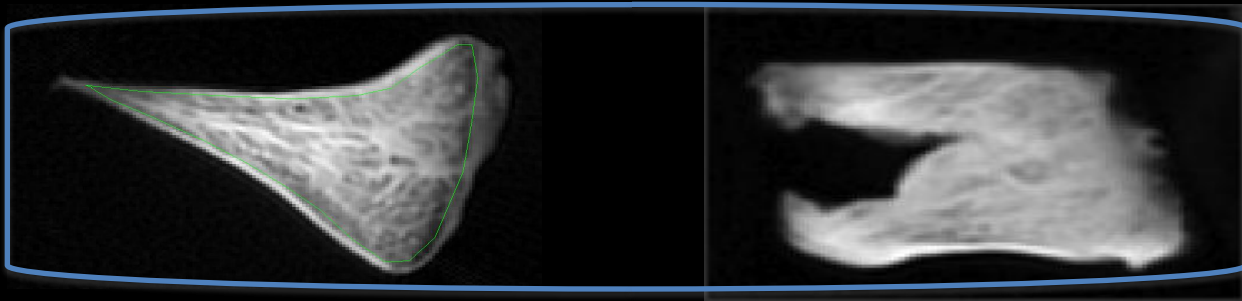
# Meniscus

## TE times



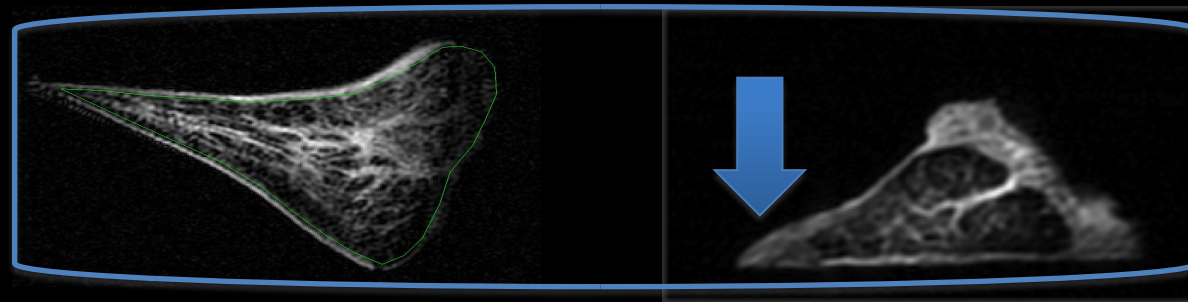
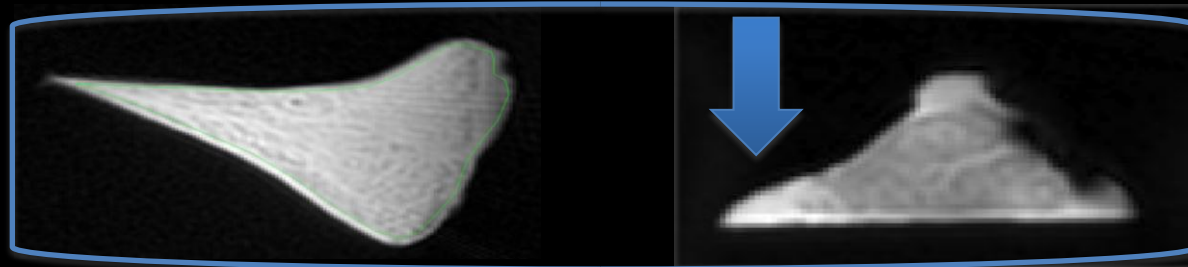
# UTE T1 rho

## Meniscal tear



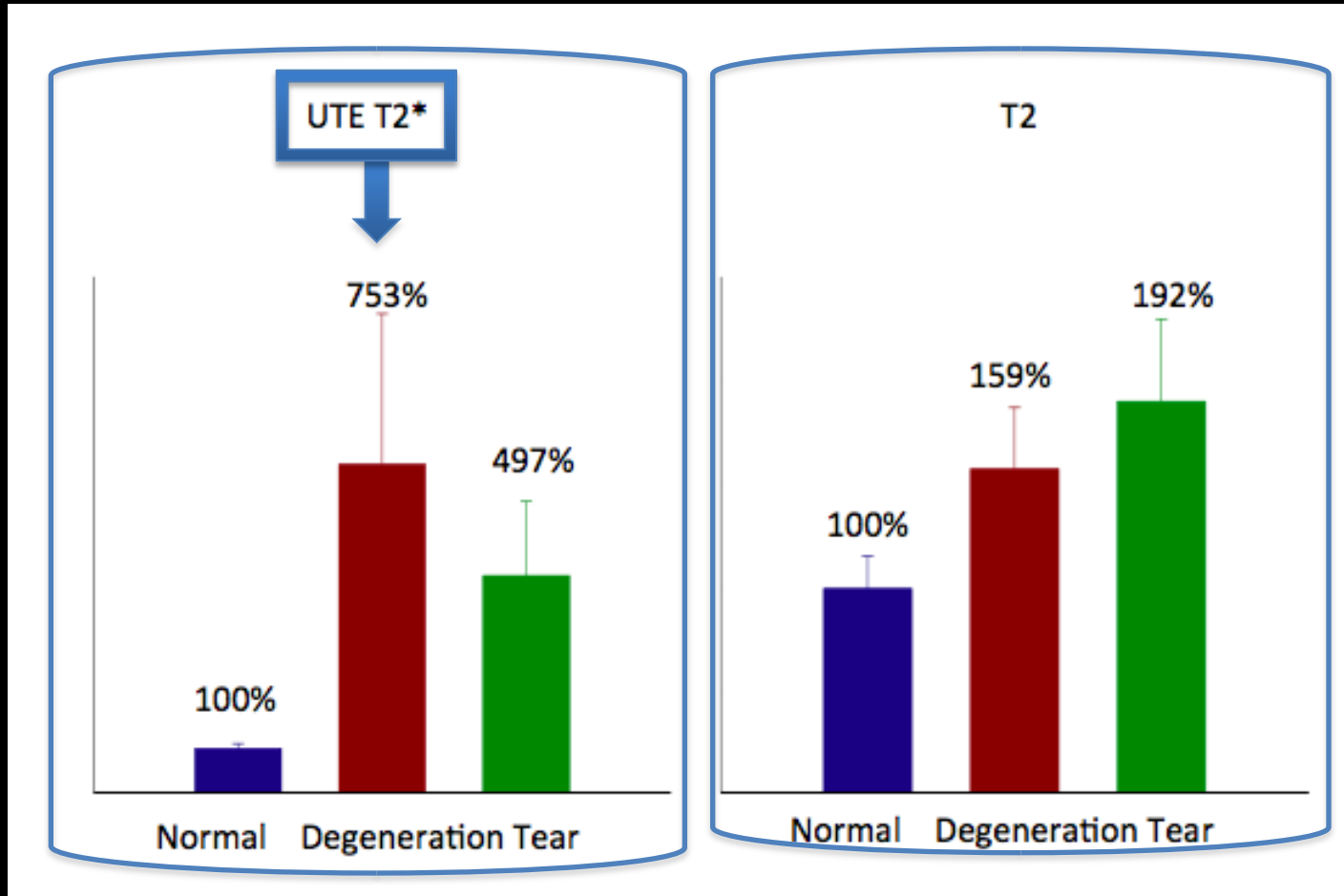
UTE T2\*

# Meniscal degeneration



# UTE T2\* vs T2

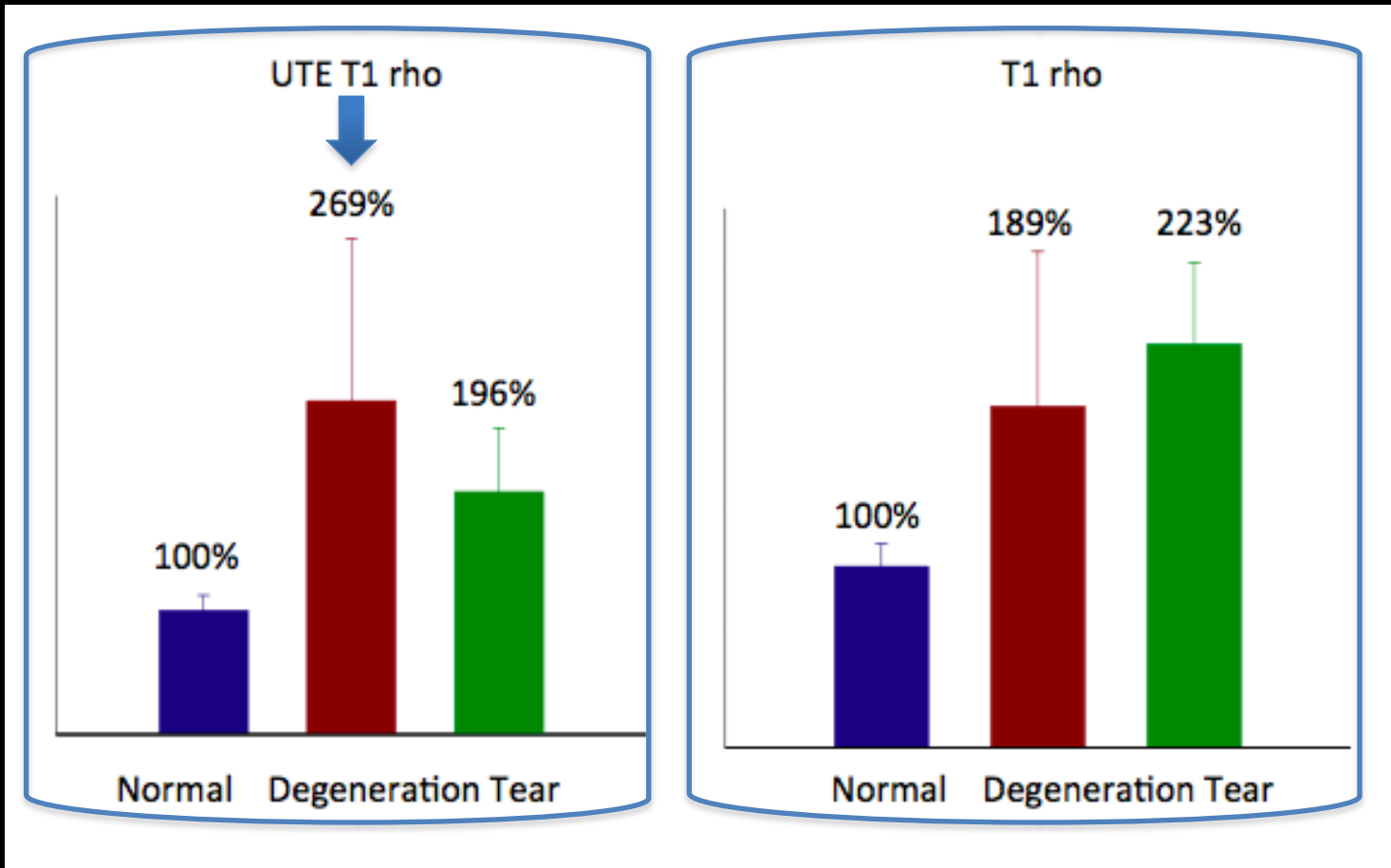
## Normal vs degeneration vs tear



UTE T2\* more sensitive in identification of pathology than T2 values ( $p=0.03$ )

# UTE T1 rho vs T1 rho

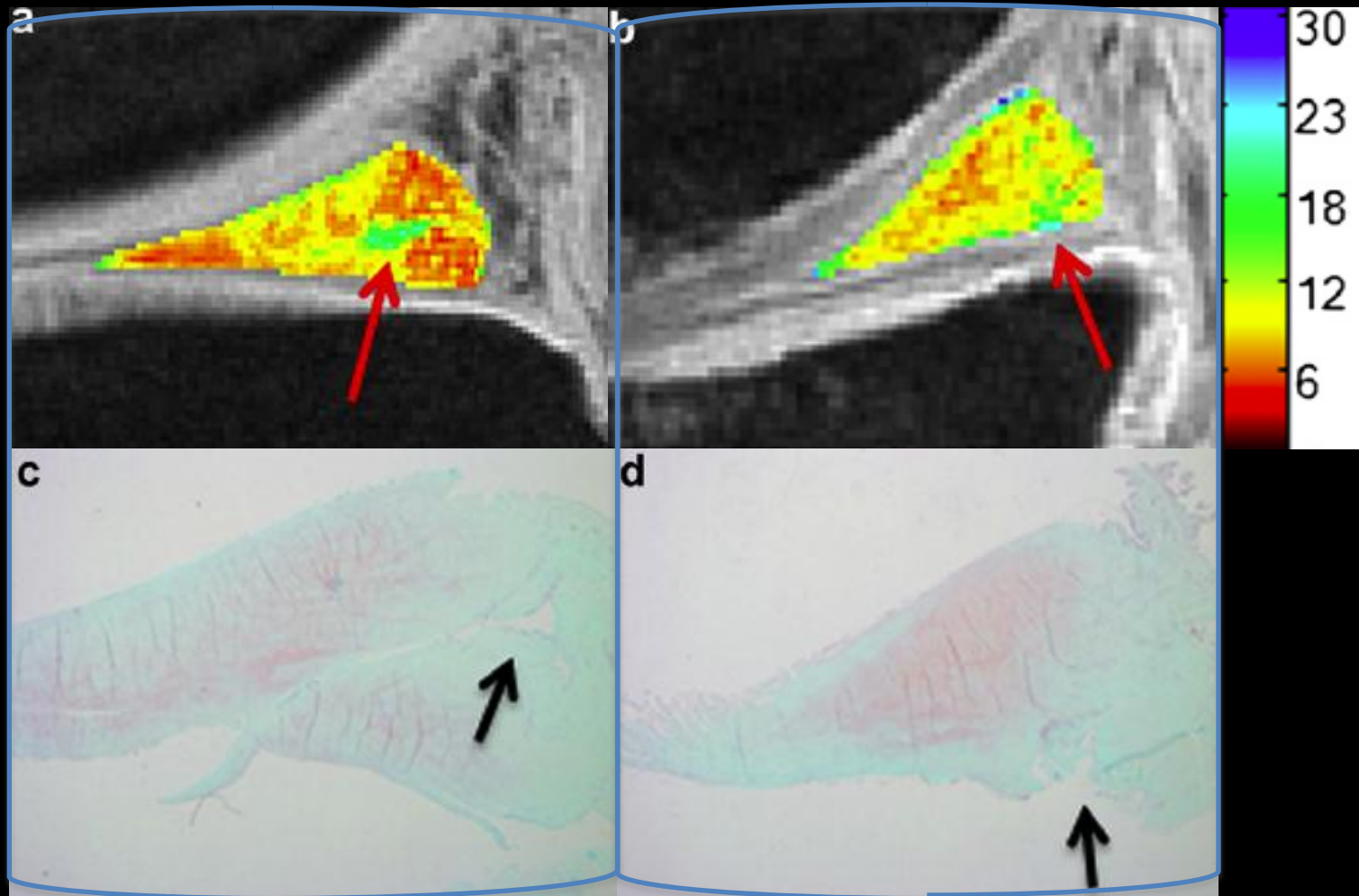
Normal vs degeneration vs tear



☐ No statistical significant difference between groups

# UTE T2\*

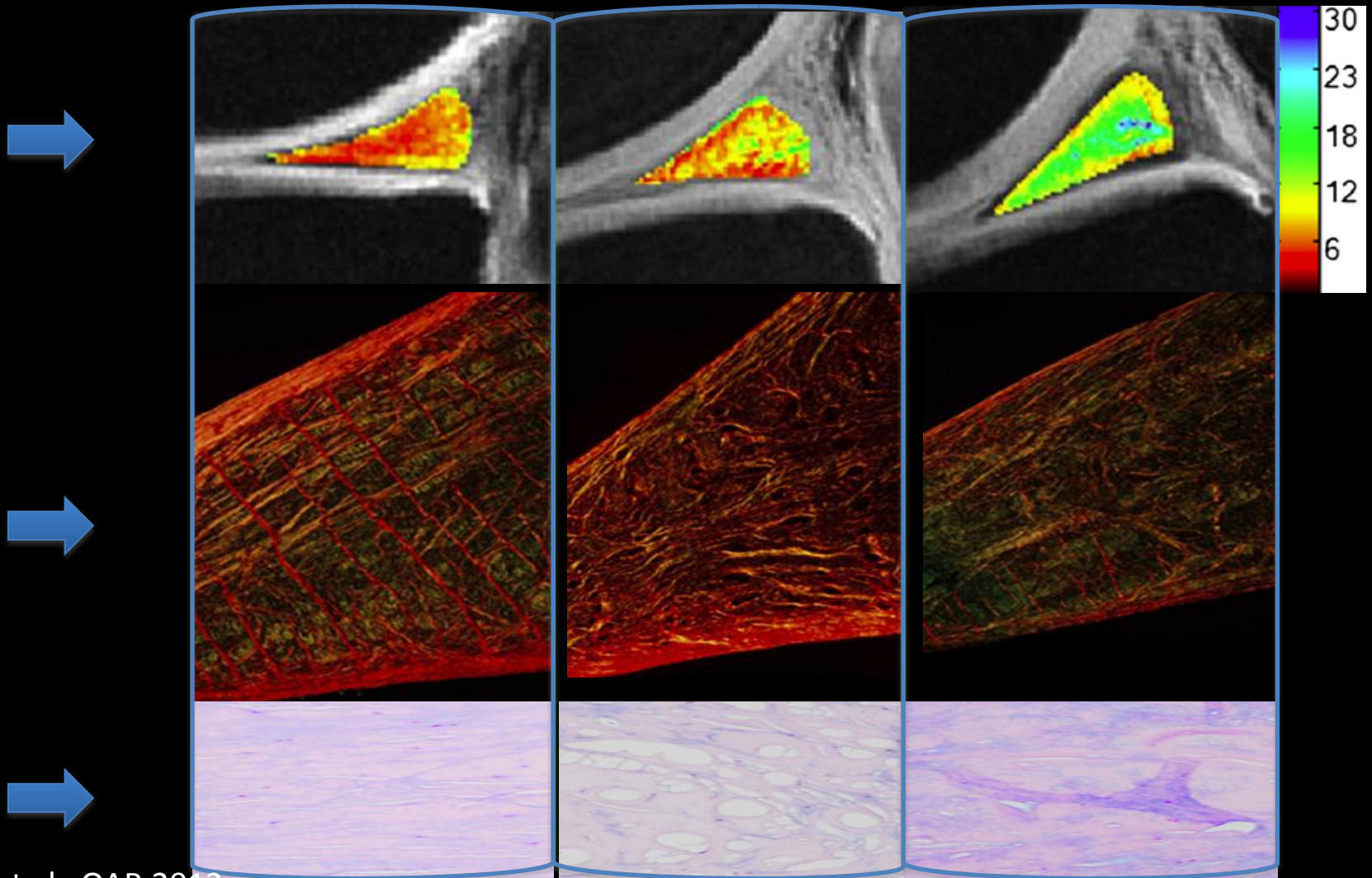
## Posterior horn medial meniscus





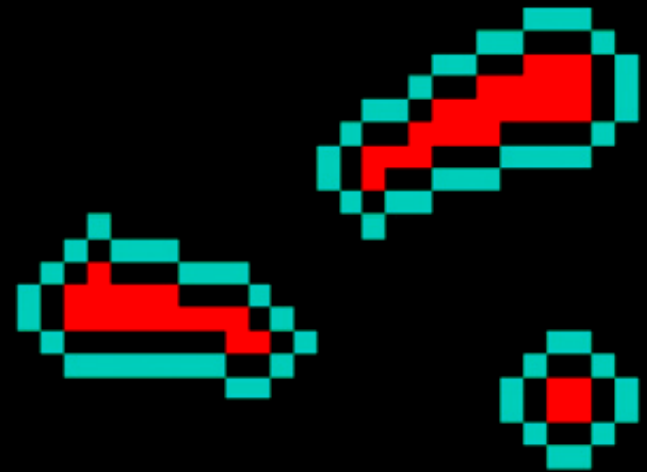
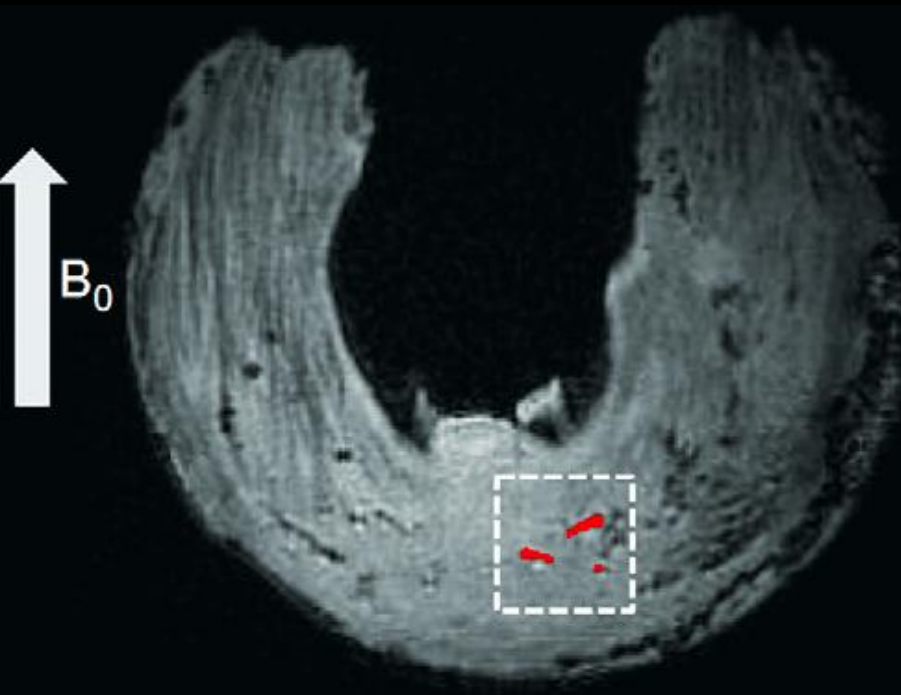
# UTE T2\*

## Posterior horn medial meniscus



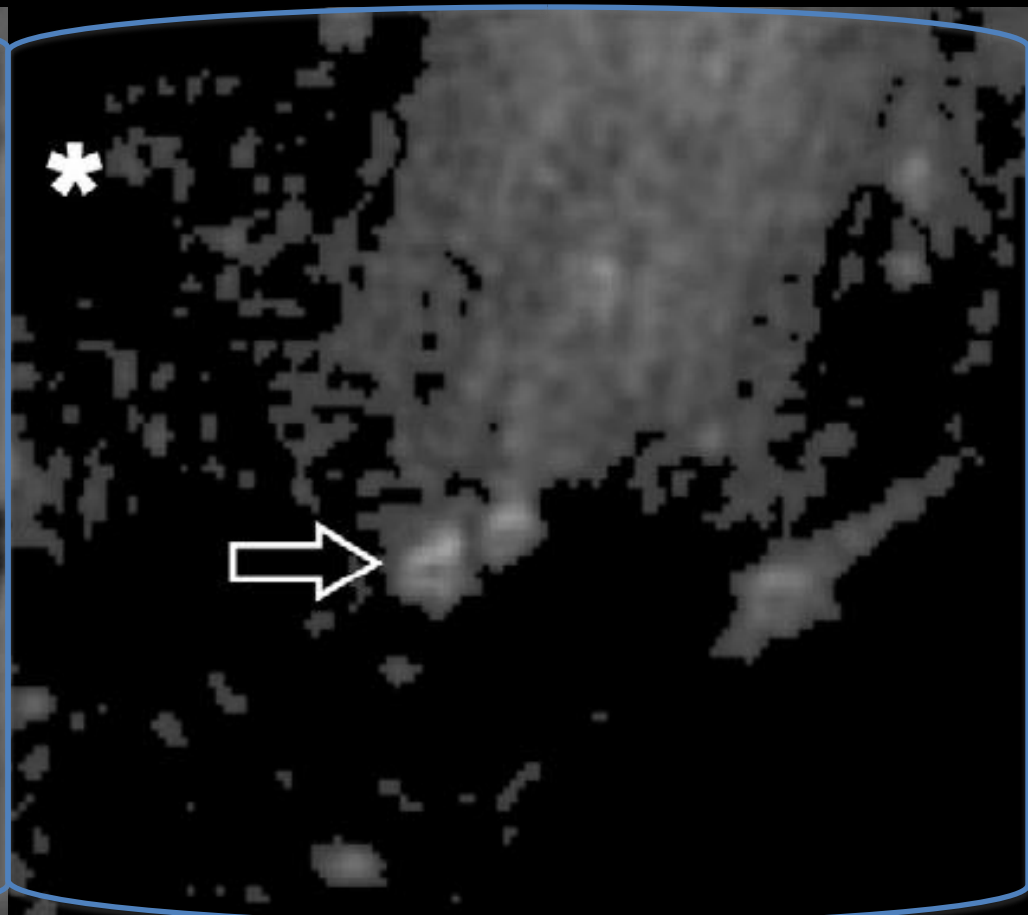
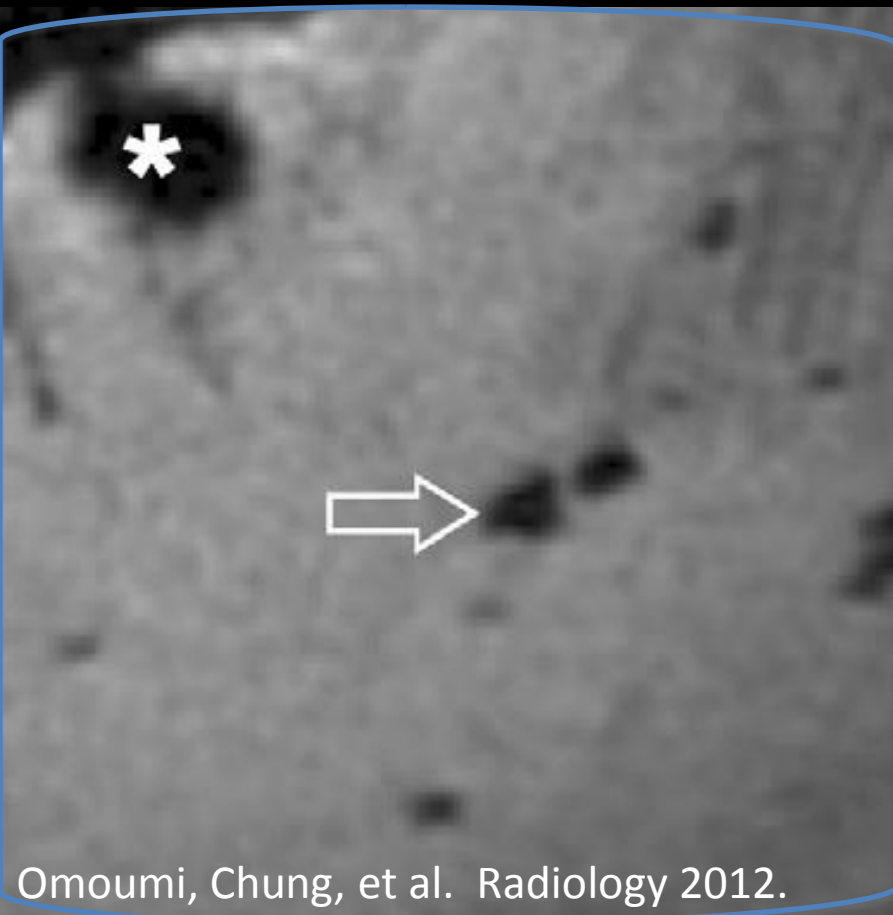
# 3D UTE

## Meniscal calcifications

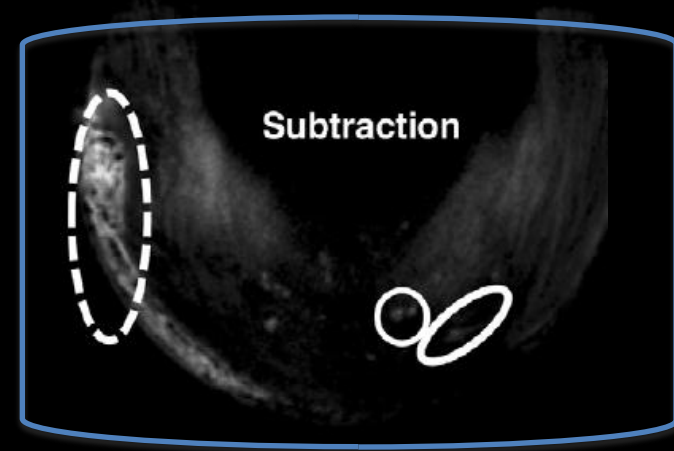
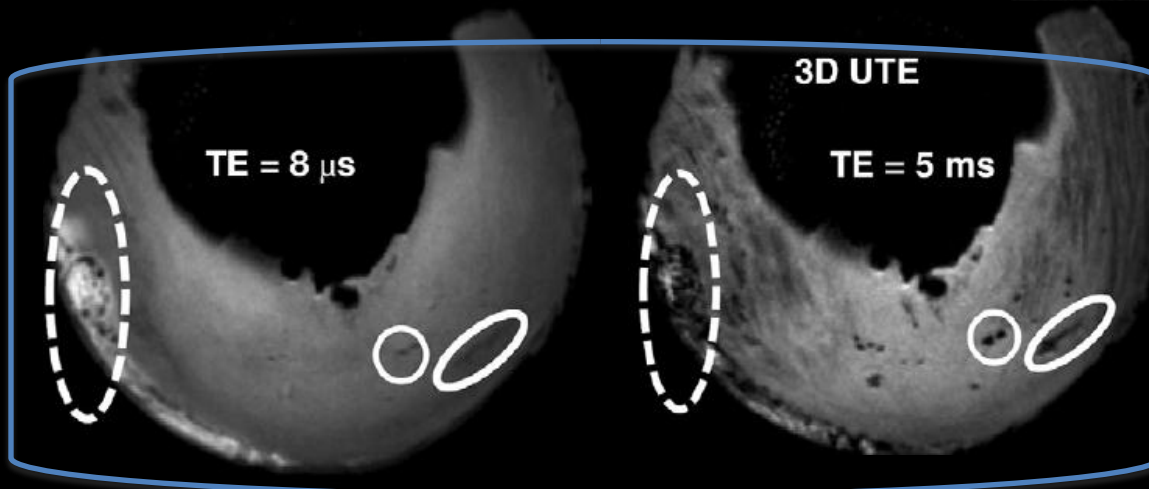
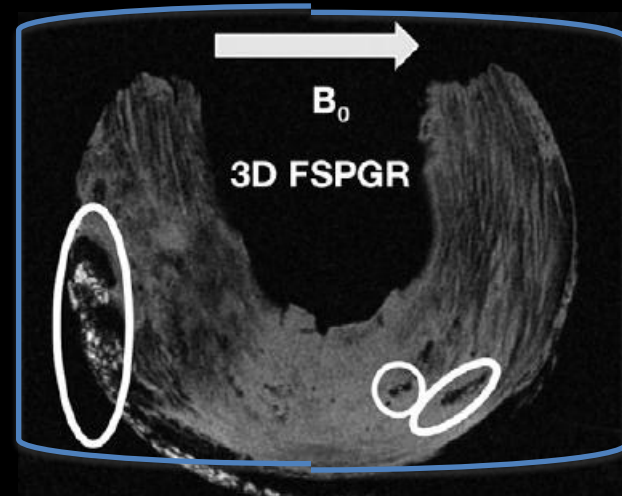
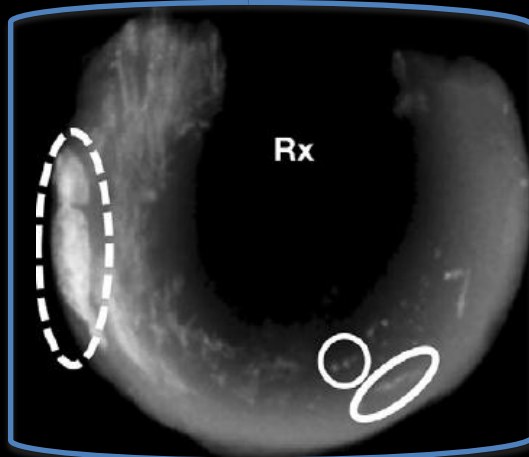


# UTE and subtraction

## Meniscal calcifications vs gas



# Meniscal calcifications



# Summary

UTE qMRI can distinguish and quantify:

Proteoglycan integrity

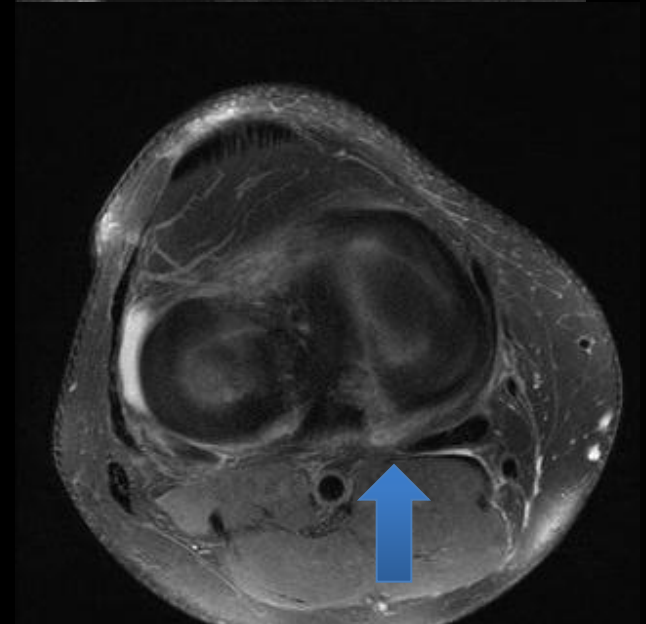
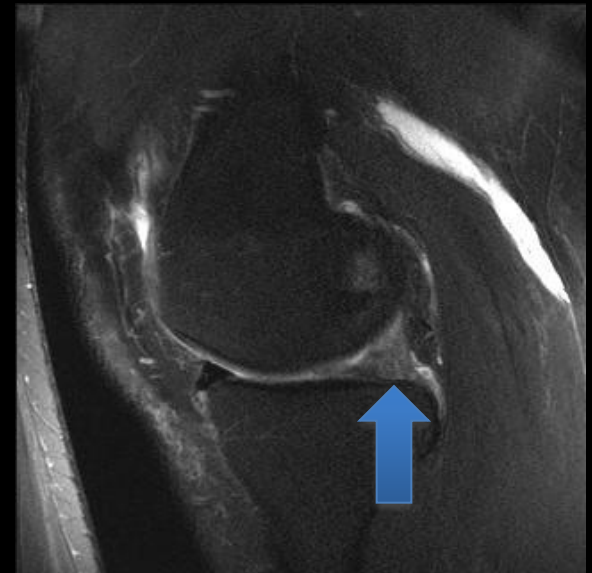
Collagen organization

Microcalcifications

Clinical applications include characterization of short T2 tissues



# Future Directions

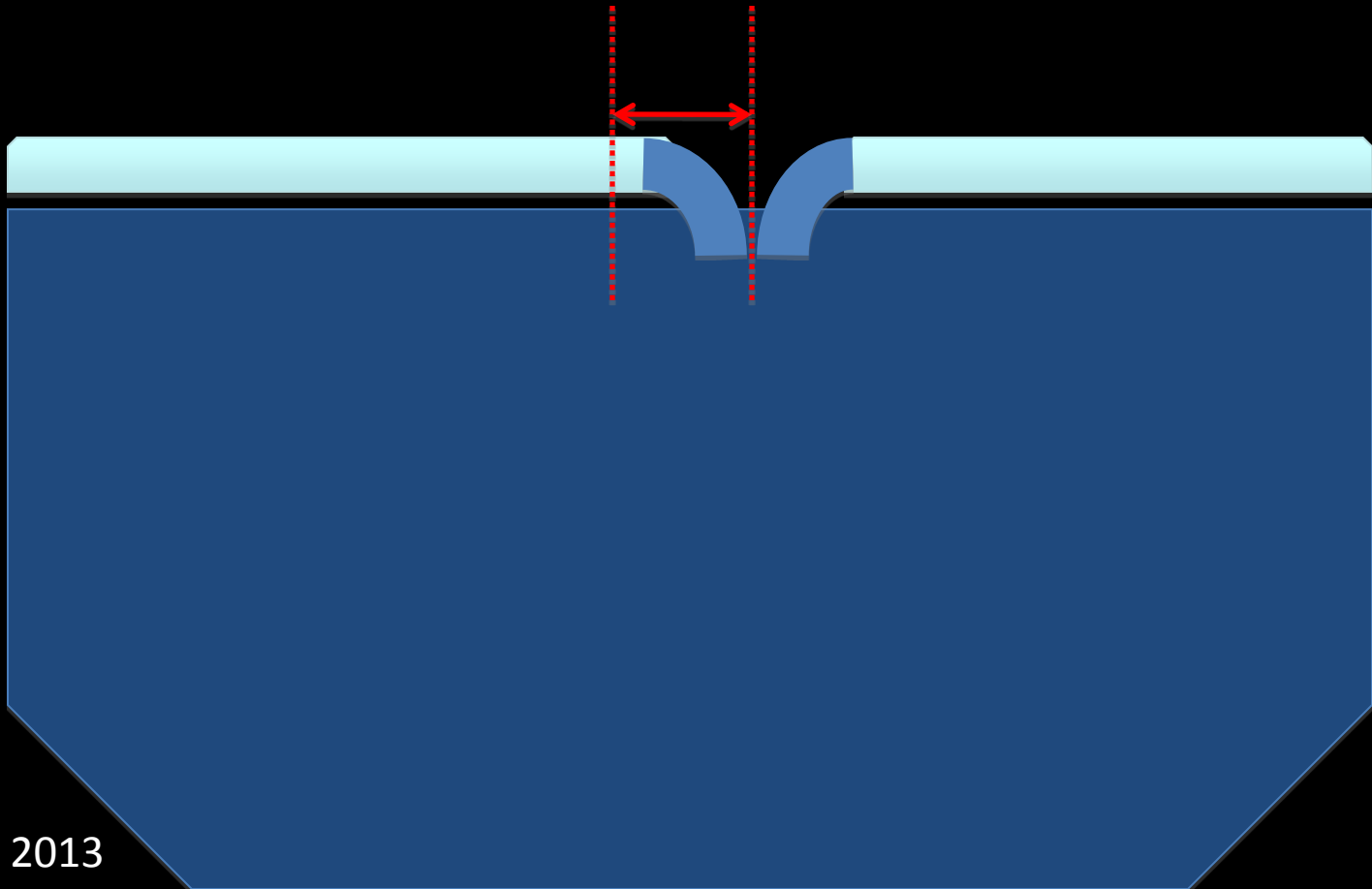


Tear of posterior horn of medial meniscus with involvement of posterior root ligament



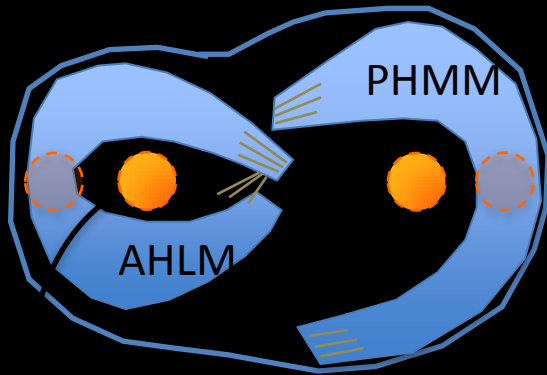
# Future directions

Evaluate normal root ligament morphology through UTE MRI and correlate with histology



# Future directions

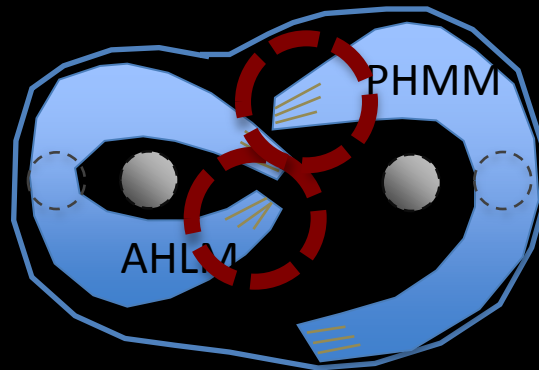
## A. Coring



Cartilage/Bone  
characterization  
by 3D UTE

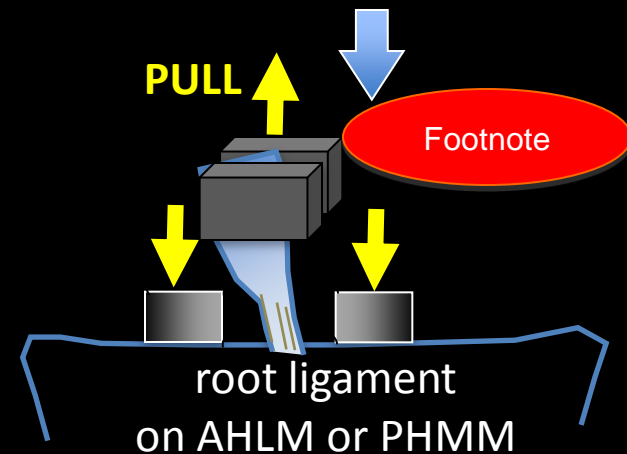
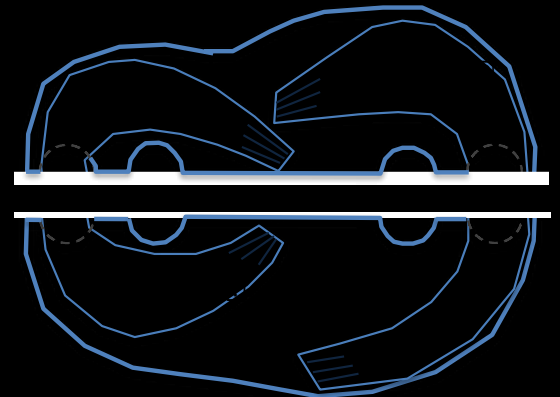
\*\*\*\*Core acquisition for  
project that will explore  
Bone cartilage interface

## B. Root Ligament



1" Coil Placed On Top  
morphologic & qMRI:  
- distinguish R.L. from  
meniscus  
-qMRI of root ligament  
--orientation to B0 as  
patient would be placed  
(perpendicular to bore)

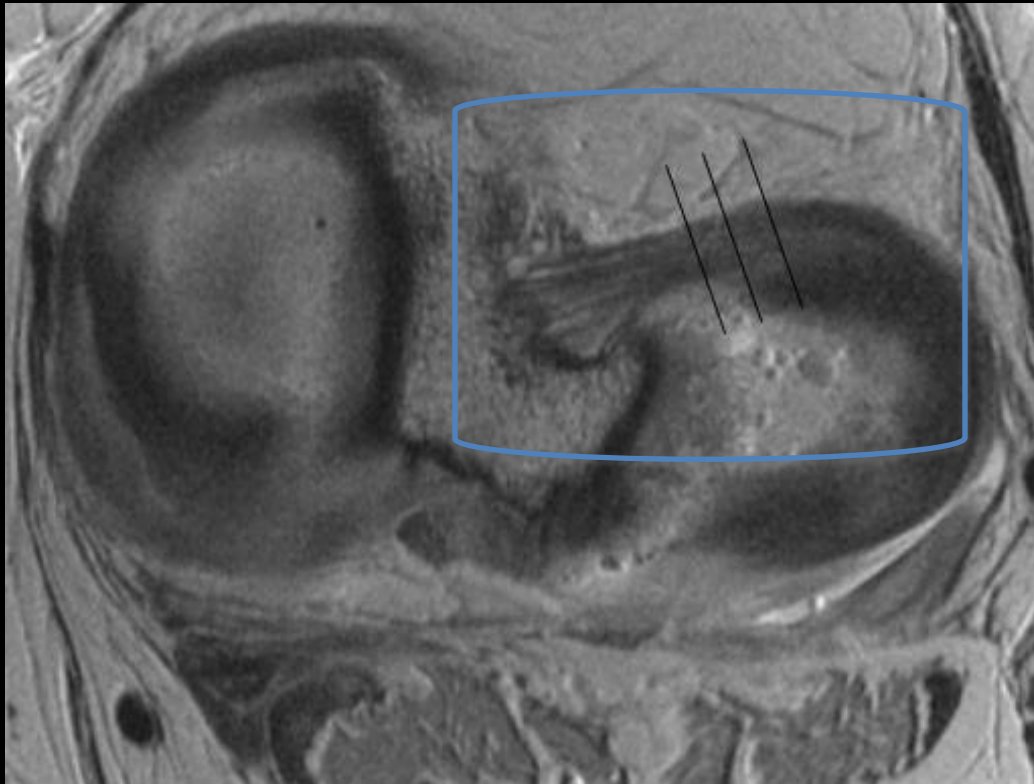
## C. Biomechanics



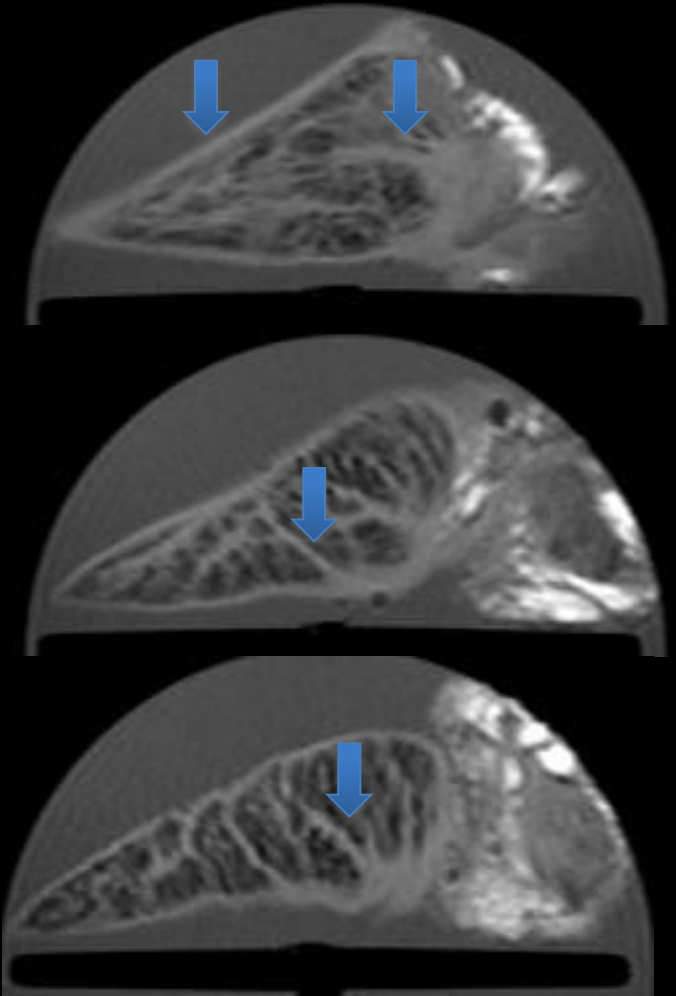
# Collagen Network

## Transition from Meniscus to Root Ligament

Axial



Sagittal



# Conclusion

UTE allows visualization of “MRI invisible” short T2 structures.

Menisci are composed of collagen and proteoglycans, and microstructural changes can lead to altered joint mechanics, predisposing to osteoarthritis.

UTE T2\* and UTE T1 rho are novel MRI pulse sequences that can detect microstructural changes, which could lead to early diagnosis and quantification of response to treatment.

# Thank you

Christine Chung

UCSD MSK Radiology



The image shows a screenshot of a website with a green background. On the left is a black and white caricature of a man with a beard, wearing a white lab coat and a striped tie, pointing upwards with his right hand. To the right of the caricature is a yellow banner with the text "UCSD Musculoskeletal Radiology". Below this is a blue banner with the text "Welcome to" followed by the UCSD logo (a stylized sunburst) and "UCSD". Underneath the blue banner is another blue banner with the text "Department of Radiology". Below the blue banners is a line of small text: "Clicking on Don's caricature will take you back to the homepage." At the bottom of the page is the text "bonepit.com" in a large, bold, black font.

UCSD Musculoskeletal Radiology

Welcome to  UCSD

Department of Radiology

Clicking on Don's caricature will take you back to the homepage.

[bonepit.com](http://bonepit.com)

# References

1. Bae WC, Chang EY, Chung CB. Short and ultrashort TE imaging of cartilage and fibrocartilage. Encyclopedia of Magnetic Resonance, Online . 2012. John Wiley & Sons, Ltd.
2. Bae WC...Chung CB. Conventional and ultrashort time-to-echo magnetic resonance imaging of articular cartilage, meniscus, and intervertebral disc. Top Magn Reson Imaging. Vol. 21, No. 5, Oct. 2010. 275-289.
3. Bae WC, Dwek JR...Chung CB. Ultrashort echo time MR imaging of osteochondral junction of the knee at 3T: identification of anatomic structures contributing to signal intensity. Radiology: Volume 254:Number 3 – March 2010. 837-845.
4. Berman, M. Knicks' Lin won't play with knee at '85 percent'. Knicks Blog, NY Post. 5.9.2012.
5. Buck, FM...Chung CB. Comparison of T1rho measurements in agarose phantoms and human patellar cartilage using 2D multislice spiral and 3D magnetization prepared partitioned k-space spoiled gradient-echo snapshot techniques at 3T. AJR: 196, February 2011. W174-179.
6. Du, J. Quantitative Ultrashort TE (UTE) imaging of short T2 tissues. Encyclopedia of Magnetic Resonance, Online . 2012. John Wiley & Sons, Ltd.
7. Du J...Chung CB, Bydder GM. Ultrashort TE T1rho (UTE T1rho) imaging of the Achilles tendon and meniscus. Magnetic Resonance in Medicine: 64:834-842 (2010).



# References

- 8.Hall, BK. Newman SA. Cartilage: Molecular Aspects. Physicochemical aspects of cartilage: Extracellular matrix. CRC Press 1991.
- 8.Messner K, Gao J. The menisci of the knee joint. Anatomical and functional characteristics, and a rationale for clinical treatment. J Anat. (1998), 193. 161-178.
- 9.Omoumi, P...Chung CB. Meniscal calcifications: Morphologic and quantitative evaluation by using 2D inversion-recovery ultrashort echo time and 3Dultrashort echo time 3.0-T MR imaging techniques – feasibility study. Radiology: Vol. 264 No. 1 – July 2012. 260-268.
- 10.Peterson W, Tillman B. Collagenous fibril texture of the human knee joint menisci. Anat Embryol (1998) 197:317-324.
- 11.Preidt, R. Osteoarthritis costs U.S. \$185B a year. Health and Behavior, USA Today. 12.4.2009.
- 12.Robson MD, Bydder GM. Clinical ultrashort echo time imaging of bone and other connective tissues. NMR in biomedicine. 2006: 19: 765-780.
13. Robson MD, Gatehouse PD, Bydder M, Bydder GM. Magnetic resonance: an introduction to ultrashort TE (UTE) imaging. J Comput Assist Tomogr 2003; 27:825-846.

# References

15. Smith, Stephen A. Knicks must let Jeremy Lin go. ESPN, New York. 7.17.2012.
16. U.S. Centers for Disease and Control Prevention, [www.cdc.gov](http://www.cdc.gov).
17. Williams A, Qian Y, Golla S, Chu CR. UTE-T2\* mapping detects sub-clinical meniscus injury after anterior cruciate ligament tear. *Osteoarthritis and Cartilage*: 20 (2012). 486-494.
18. Young, I. Overview of short and ultrashort T2/T2\* echo time (UTE) imaging. *Encyclopedia of Magnetic Resonance*, Online . 2012. John Wiley & Sons, Ltd.